

For Sale

Asking Price: €80,000

RAINEY
ESTATE AGENTS



Crieve Glebe,
Letterkenny, Co Donegal.
Superb site with planning



Description

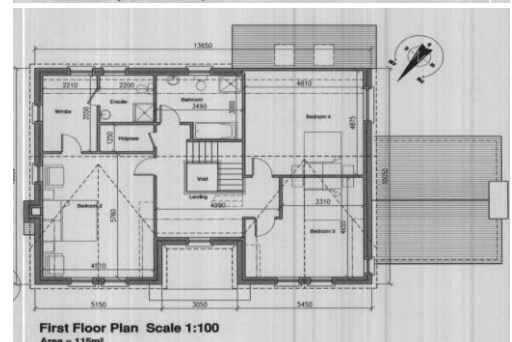
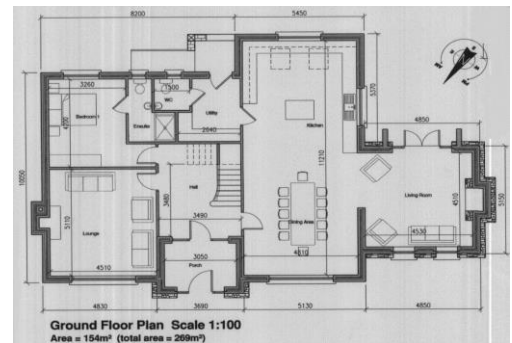
An opportunity to acquire a residential site extending to 0.22 Ha (0.59 Acres) with exceptional countryside views towards Rockhill House. Located within 5 minutes drive of Letterkenny Town Centre but offering a tranquil setting while remaining conveniently close to amenities and facilities in Letterkenny. Planning permission has been granted for the construction of a two storey detached house extending to 269 sq m (2,895 sq ft) approximately with accommodation comprising 3 large reception rooms, 4 bedrooms and 4 bathrooms.

Key Features:

- 0.22 Ha (0.59 Acre) site with stunning countryside views overlooking Rockhill House and grounds.
- Convenient location just 5 minutes drive of Letterkenny Town Centre.

Directions

Using Google Maps, insert F92 AW7Y and follow the directions. The Eircode is for the house adjacent to the site. The site is easily identifiable by our prominent 'For Sale' board. Latitude: 54.93035 Longitude: -7.76351 (copy into Google Maps for location / streetview)



NEGOTIATOR

Kiara Rainey
Rainey Estate Agents
45 Port Road, Letterkenny,
Co Donegal, F92 X863
T: 074 912 2211
E: property@raineyproperty.ie

SOLICITOR

Mr Seamus Gunn
McCloughan Gunn and Co.
High Road
Letterkenny
Co. Donegal
T: 0749125125
E: office@mcglk.ie

VIEWING DETAILS

Please contact us to make an appointment. Our Office is open Monday to Friday 9am to 5:30 pm. Viewings outside of these hours and Saturdays by appointment.

CONDITIONS TO BE NOTED: A full copy of our general brochure conditions can be requested from our office. We recommend that you familiarise yourself with these general conditions. While care has been taken to ensure that information contained in our publications is correct at the time of publication, changes in circumstances after the time of publication may affect on the accuracy of this.

Ordnance Survey Ireland Licence No. CYAL 50293602.

PSRA Registration No. 004598