

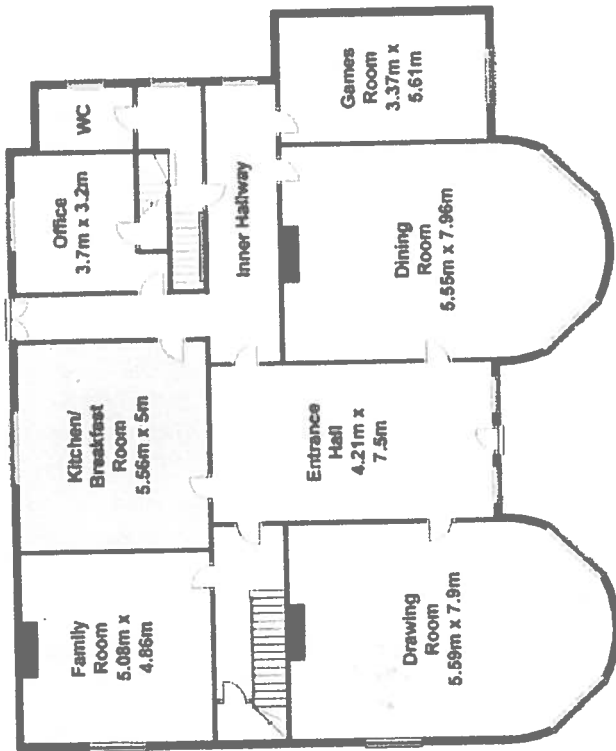
First Floor

Total Approximate Area - 587.5 sq.m (6,324 sq.ft)

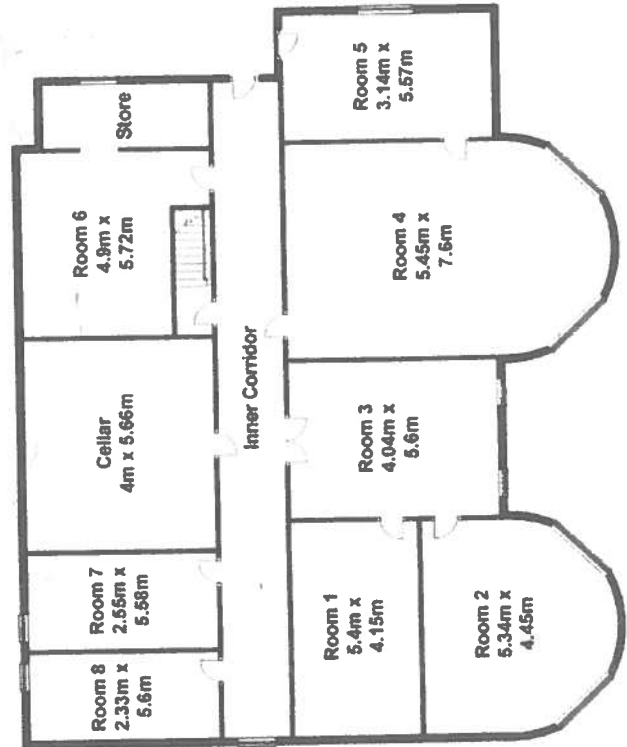
Not to Scale

Whilst every attempt has been made to ensure the accuracy of these floorplans, measurements are approximate and no responsibility is taken for error, omission or mis-statement. This plan is for illustrative purposes only and should be used as such.

- Reception Rooms / Living and Circulation Areas
- Kitchens
- Bedrooms
- Bathrooms
- Storage



Ground Floor



Basement