

# A charming cottage overlooking the shores of Killary Fjord

Leenane, Co. Mayo, H91 KF6E



# A charming cottage overlooking the shores of Killary Fjord

Leenane, Co. Mayo, H91 KF6E



# A charming cottage overlooking the shores of Killary Fjord

Leenane, Co. Mayo, H91 KF6E



## About this property

Bundorragha Cottage is an alluring countryside cottage which is idyllically set overlooking the shores of Killary Fjord. Nestled in a sheltered cove on the southern banks of Killary Fjord, the cottage is surrounded by the spectacular wilderness of the Delphi Valley and the Mweelrea mountain range to the north.

Accessed from the R335 road on the Wild Atlantic Way, a tranquil country road leads to the cottage. Upon entering through the porch, you are welcomed into the cosy sitting room with tiled floors and a wood burning stove nestled in a stone fireplace. The sitting room flows into an open plan kitchen / dining room which is generously proportioned and features built-in units and sliding doors opening out to the terrace.

The master ensuite bedroom boasts dual aspect views of Killary Fjord, while three further bedrooms are accessed off the sitting room, with a Jack and Jill bathroom shared between two of these bathrooms. A family bathroom is also located just off the kitchen and includes a shower unit and bathtub.

In all the accommodation extends to about 1,315 sq ft or 122 sq m as shown on the accompanying floorplans.

### Gardens & Grounds

The front of the cottage is marked by stone entrance piers, providing access to ample parking on the side. A patio area is set to the rear while there is a rockery neatly presented to the front of cottage. A lawned area along with a second vehicular entrance to the side.

# A charming cottage overlooking the shores of Killary Fjord

Leenane, Co. Mayo, H91 KF6E



## Property Details

### History

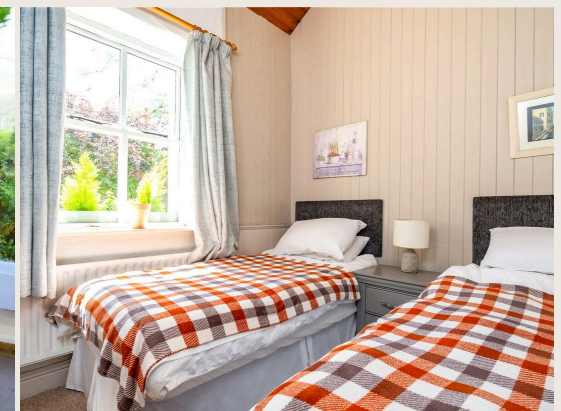
Bundorragha Cottage is believed to have been originally constructed by The Congested Districts Board in the early 1800's, served as a central gathering place for nearly 80 cottages in this pre-famine hamlet. Under the ownership of Pat O'Grady, the cottage later become a formal Shebeen where Irish music and dance sessions were held regularly. The bar, situated in the present-day sitting room, consisted of two wooden planks on top of wooden fish barrels, adjacent to the main bedroom which served as a ladies pre-dancing beautification room.

The locals still fondly reminisce about the lively Ceilidh nights at Pat's Sheebeen, especially the sight of Pat rowing his curradh (rowing boat) across Killary Bay under the moonlight. His mission was to replenish his bar from the legally licensed Public House at Nancy's Point before his customers ran out of provisions.



# A charming cottage overlooking the shores of Killary Fjord

Leenane, Co. Mayo, H91 KF6E



# A charming cottage overlooking the shores of Killary Fjord

Leenane, Co. Mayo, H91 KF6E



## Plans

 1,315 sq ft

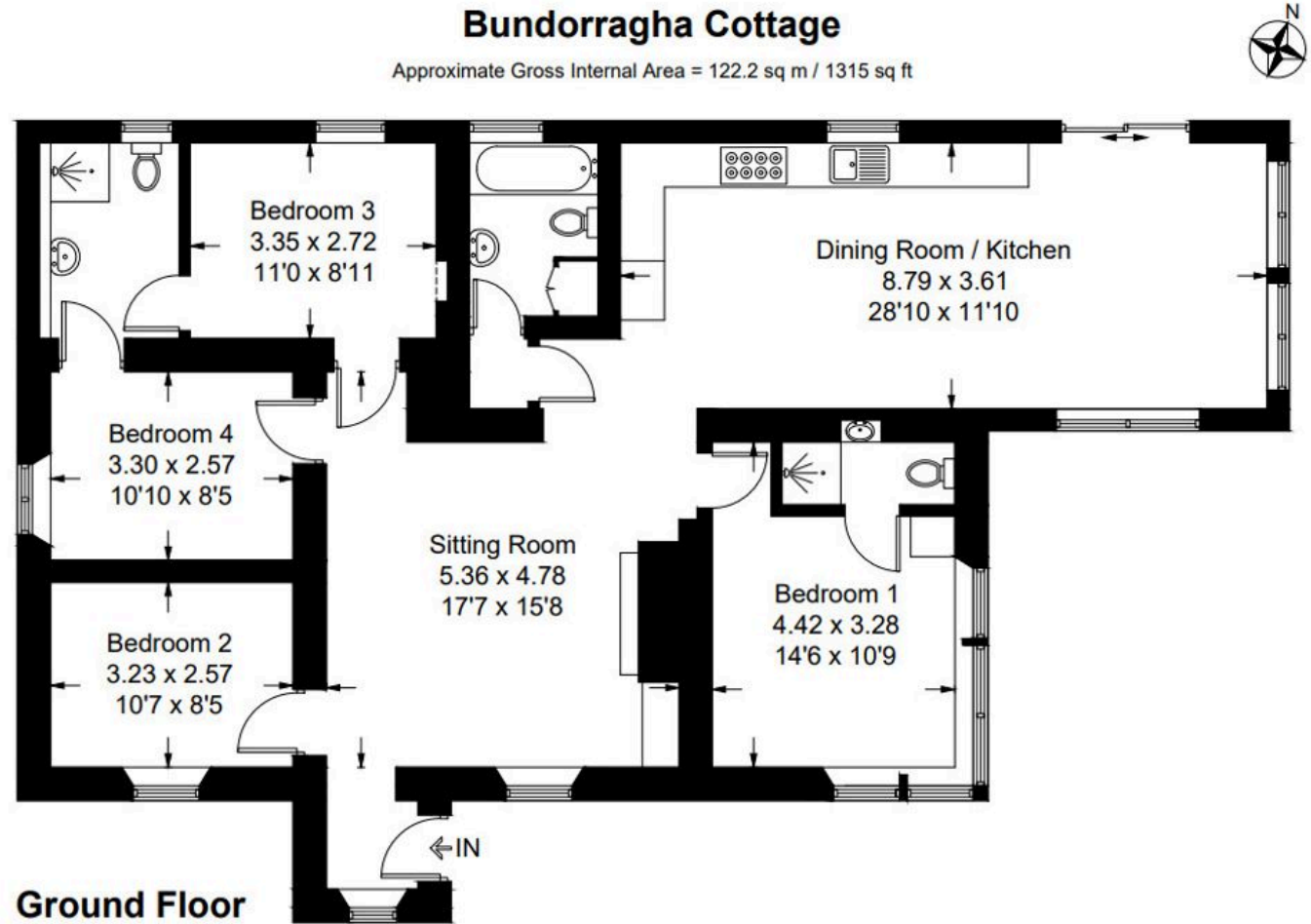


Illustration for identification purposes only, measurements are approximate, not to scale. floorplansUsketch.com © (ID1098578)

# A charming cottage overlooking the shores of Killary Fjord

Leenane, Co. Mayo, H91 KF6E



## Local Area

Bundorragha Cottage is nestled in a sheltered cove on the banks of Killary Fjord to the south and set amidst the spectacular wilderness of the Delphi Valley and the Mweelrea mountain range to the north. Leenane (10 km) is a quaint countryside village set at the head of Killary Harbour. The village of Leenane is nestled between the mountains of Maamtrasna and Maamturk on the border of County Galway and Mayo and is also on the Wild Atlantic Way.



# A charming cottage overlooking the shores of Killary Fjord

Leenane, Co. Mayo, H91 KF6E



## Property Details

### Key Features

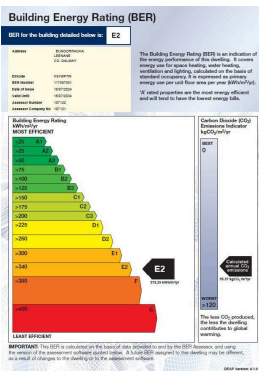
- Located in a sheltered cove on Killary Fjord
- 4 bedrooms
- Olde worlde features
- About 1,315 sq ft
- Idyllic setting

### Services & Additional Information

- Oil Fired Central Heating, Well Water, Septic Tank

### BER

BER Rating = E2





# A charming cottage overlooking the shores of Killary Fjord

Leenane, Co. Mayo, H91 KF6E



## Enquire



**Liam McCarthy**

Dublin - Country

+353 83 878 4989

liam.mccarthy@savills.ie

## More Information



[View on website](#)



[View Digital Brochure](#)



[Property Search](#)

**Viewing strictly by appointment**

Property Ref: DUY240012

**Residential & Country**

33 Molesworth Street, D02 CP04

+353 (0) 1 618 1300



Important Notice: Savills, its clients and any joint agents give notice that 1: They are not authorised to make or give any representations or warranties in relation to the property either here or elsewhere, either on their own behalf or on behalf of their client or otherwise. They assume no responsibility for any statement that may be made in these particulars. These particulars do not form part of any offer or contract and must not be relied upon as statements or representations of fact. 2: Any areas, measurements or distances are approximate. The text, photographs and plans are for guidance only and are not necessarily comprehensive. It should not be assumed that the property has all necessary planning, building regulation or other consents and Savills have not tested any services, equipment or facilities. Purchasers must satisfy themselves by inspection or otherwise. *powered by* **FluxPro**