

Fantastic Detached Home on approx. c.
1.28 ac - Development Potential

Dromgoon, Windsor Hill, Glounthaune, Cork, T45 E034

savills



Fantastic Detached Home on approx. c. 1.28 ac - Development Potential

Dromgoon, Windsor Hill, Glounthaune, Cork, T45 E034



Fantastic Detached Home on approx. c. 1.28 ac - Development Potential

Dromgoon, Windsor Hill, Glounthaune, Cork, T45 E034



About this property

Savills proudly presents "Dromgoon," a unique four-bedroom bungalow from the 1950s, in the esteemed Windsor Hill, Glounthaune area, known for its prestigious residences and stunning vistas. Requiring renovation, this property is brimming with potential, ideal for crafting a dream home or initiating a development project on its approx. 0.52 Hectare (1.28 acre) plot.

Dromgoon's appeal lies in its expansive grounds, offering one a chance to have a home on its own substantial grounds or alternatively development opportunities for some luxurious homes, subject to planning permission. Its approx. 150m road frontage positions it as a prime development prospect.

The property is encircled by a mature garden, ensuring privacy and showcasing natural beauty. The garden's mature trees create a serene oasis, complemented by spectacular, uninterrupted views of the countryside and lower harbour, highlighting the property's unique charm.

Strategically located just 1.9km from Glounthaune Train Station and

13km from Cork city, Dromgoon combines rural tranquility with urban convenience. It's near the Cork/Youghal Greenway, ideal for outdoor enthusiasts, and close to essential amenities, ensuring lifestyle needs are easily met.

Dromgoon is not just a property; it's a portal to vast opportunities. Whether you're envisioning an exquisite renovated home or a lucrative development, this site offers the foundation for both. Its development potential, enchanting views, and advantageous location make it a coveted opportunity for investors and developers.

Savills invites you to discover Dromgoon's potential, a chance to bring your vision to life in one of Cork's most desirable locations. Contact us for more information or to arrange a viewing, seizing this rare opportunity.

Fantastic Detached Home on approx. c. 1.28 ac - Development Potential

Dromgoon, Windsor Hill, Glounthaune, Cork, T45 E034



Fantastic Detached Home on approx. c. 1.28 ac - Development Potential

Dromgoon, Windsor Hill, Glounthaune, Cork, T45 E034



Plans

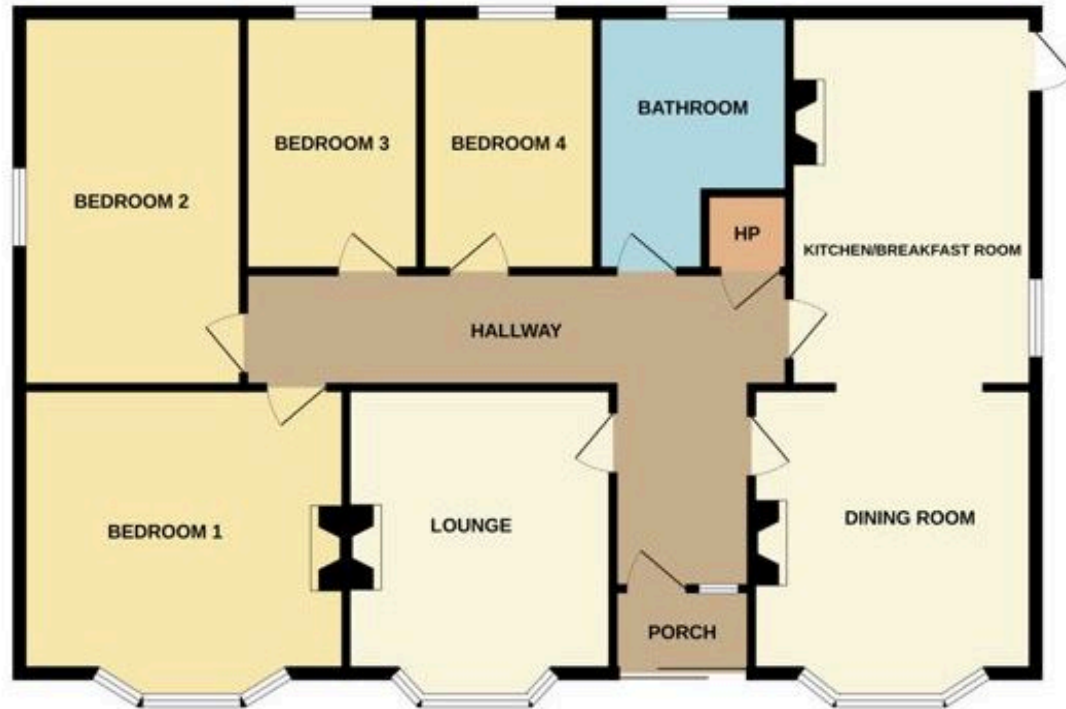


Approx. 1,213 sq ft (113 sq m)



Large site approx.
0.52 ha (1.28 ac)

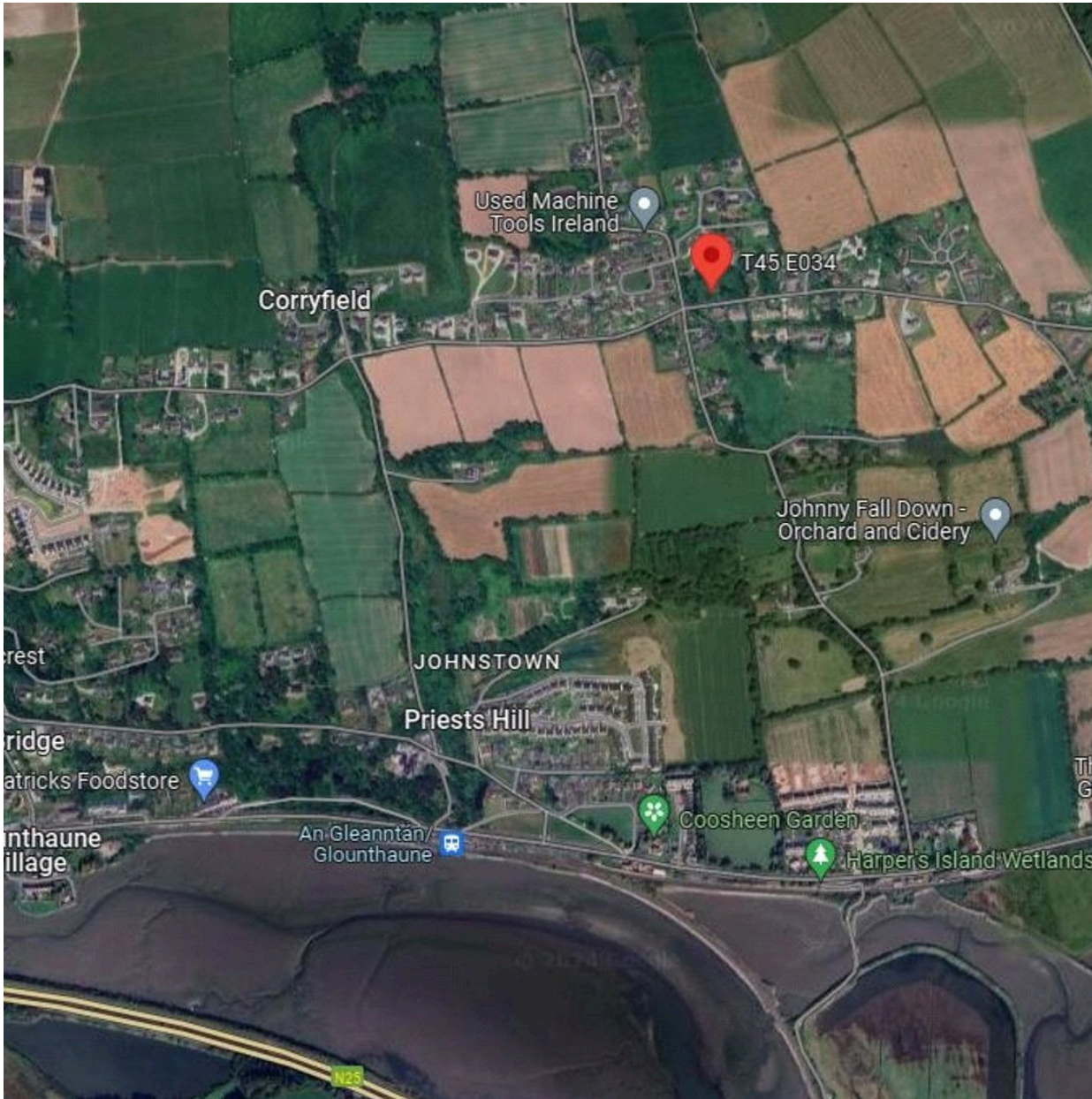
DROMGOON
1216 sq.ft. (113.0 sq.m.) approx.



TOTAL FLOOR AREA: 1216 sq.ft. (113.0 sq.m.) approx.
Made with Metropix ©2024

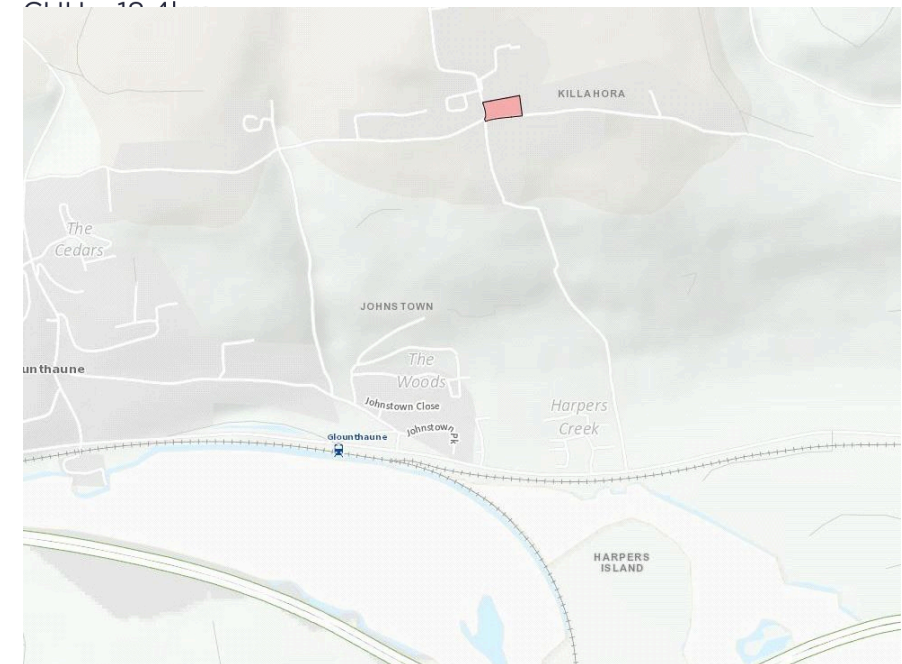
Fantastic Detached Home on approx. c. 1.28 ac - Development Potential

Dromgoon, Windsor Hill, Glounthaune, Cork, T45 E034



Local Area

- East Cork Walk & Cycle Way - 1.1km
- Harpers Island - 1.1km
- Glounthaune Train Station - 1.9km
- Bus Stop - 1.9km
- Fitzpatrick's shop - 2.5km
- Pub, restaurant - 2.8km
- School - 30 min walk
- Gilead Sciences Inc - 4.9km
- Dunkettle Interchange - 4.9km
- Cork City Centre - 13km
- UCC - 15.6km



Fantastic Detached Home on approx. c. 1.28 ac - Development Potential

Dromgoon, Windsor Hill, Glounthaune, Cork, T45 E034



Property Details

Key Features

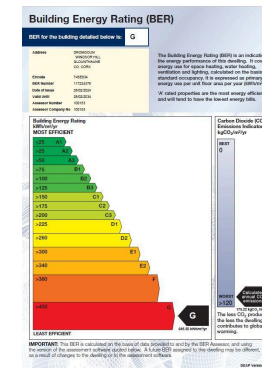
- Distinctive Four-bedroom detached bungalow
- Approx. 1,213 sq ft (113 sq m)
- Large site approx. 0.52 Hectare (1.28 acre)
- Site development potential (subject to PP)
- Elevated level south facing site stunning views
- Only 1.9km Glounthaune Train Station, 13km Cork city
- Situated on prestigious Windsor Hill, Glounthaune

Services & Additional Information

- Mains Water
- Septic Tank
- High Speed Broadband in Area
- Own private access
- Approximately 150m of Road Frontage

BER

BER Rating = G



Local Authority

Cork County Council

Tenure

Freehold

Fantastic Detached Home on approx. c. 1.28 ac - Development Potential

Dromgoon, Windsor Hill, Glounthaune, Cork, T45 E034



Enquire



Lawrence Sweeney

Penrose House, Victorian Quarter, Cork
+353 (0) 83 116 7163
lawrence.sweeney@savills.ie

More Information



[View on website](#)



[View Digital Brochure](#)



[Property Search](#)

Viewing strictly by appointment

Property Ref: CKK230114



Important Notice: Savills, its clients and any joint agents give notice that 1: They are not authorised to make or give any representations or warranties in relation to the property either here or elsewhere, either on their own behalf or on behalf of their client or otherwise. They assume no responsibility for any statement that may be made in these particulars. These particulars do not form part of any offer or contract and must not be relied upon as statements or representations of fact. 2: Any areas, measurements or distances are approximate. The text, photographs and plans are for guidance only and are not necessarily comprehensive. It should not be assumed that the property has all necessary planning, building regulation or other consents and Savills have not tested any services, equipment or facilities. Purchasers must satisfy themselves by inspection or otherwise. *powered by* **FluorPro**