

FOR SALE

24 PARK STREET, THE RANCH,
INCHICORE, DUBLIN 10.

€195,000



ONE BED TERRACE COTTAGE c.35 sq.m

A unique opportunity to acquire this fully renovated and modernized, one bedroom terraced house in pristine condition located in the peaceful area of Inchicore known as The Ranch. Lovely cared for by the owner-occupier this house is walk-in condition and is located off the Sarsfield Road, just a short walk from Inchicore village and close to Chapelizod, Islandbridge, Ballyfermot, Heuston, and Kilmainham, and near to the River Liffey and Grand Canal cycle paths.

BER RATING

>260

D2

Tower House, Monastery Road,
Clondalkin Village, Dublin 22
www.broe.ie

01 459 4433

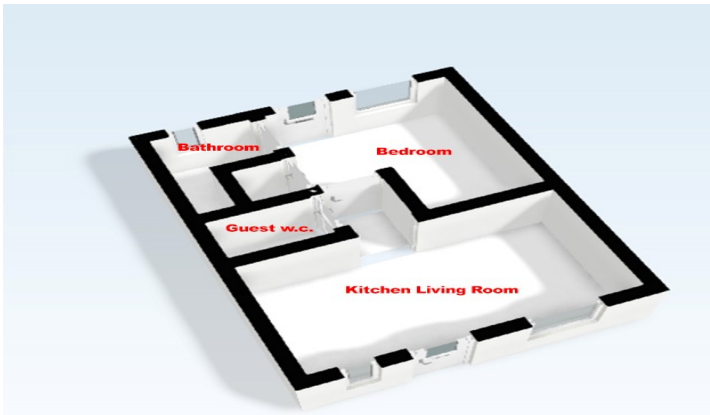
24 PARK STREET, THE RANCH, INCHICORE, DUBLIN 10.



DETAILS

A unique opportunity to acquire this fully renovated and modernized, one bedroom terraced house in pristine condition located in the peaceful area of Inchicore known as The Ranch. Lovely cared for by the owner-occupier this house is walk-in condition and is located off the Sarsfield Road, just a short walk from Inchicore village and close to Chapelizod, Islandbridge, Ballyfermot, Heuston, and Kilmainham, and near to the River Liffey and Grand Canal cycle paths. The Ranch boasts excellent transport links to the City Centre by bus and Luas, with trains at Heuston Station, and access to the road network on the N4, N7, and M50. This workmans-cottage type house been lovely refurbished recently and is cleverly designed for maximum the use of space and light. It consists of a bright open plan living room & kitchen, with a large double bedroom and ensuite bathroom with shower to the rear. It also boasts a a guest WC, as well as ample free on street parking, and secure rear access via a communal gated yard area.

24 PARK STREET, THE RANCH, INCHICORE, DUBLIN 10.



EXTRA FEATURES

- Double glazed windows & doors.
- Recently re-wired, re-plumbed and re-roofed.
- Mains fed Gas combi-boiler providing heating and hot water.
- Cable T.V points in living room and bedroom.
- Monitored alarm with motion PIPs and window sensors.
- Smoke and heat detectors, mains powered.
- Oak shaker style wooden doors.
- Cherrywood flooring throughout with cream floor tiles in two bathrooms.

LOCATION



CONTACT DETAILS

Negotiator: Lisa O' Donoghue SCSi/RICS

T: 01 459 4433

E: lisa@broe.ie

www.broe.ie

24 PARK STREET, THE RANCH, INCHICORE, DUBLIN 10.

Lounge/ Kitchen	4.97m x 3.32m	Feature fire place - Marfil Stone fireplace and hearth, with cast iron inset and grate Real flame gas fire, mains fed. Fitted kitchen, skater style in cream/ivory, Franke cream stone effect resin sink, Integrated alliances - electric oven and hob, extractor fan, Nordmende Washer/Drier, Dishwasher, Fridge Freezer.
(1) Bedroom	3.25m x 2.56m	Large fitted wardrobe - floor to ceiling Skylight, Storeroom with light and power.
En-suite	2.16m x 1.73m	Shower, fully tiled, with waterfall shower Chrome towel rack radiator, WC and wash hand basin, tiled floor.
Guest WC	1.61m x 0.87m	WC and wash hand basin, tiled floor.

Outside

On street free parking to front.

Access to semi-private yard with secure rear access via locked gate.



BROE auctioneers for itself and as agent for the vendor or lessor (as appropriate) gives notice that:
These particulars are only a general outline for the guidance of intending purchasers or lessees and do not constitute in whole or in part an offer or a Contract. Reasonable endeavours have been made to ensure that the information given in these particulars is materially correct but any intending purchaser or lessee should satisfy themselves by inspection, searches, enquiries and survey as to the correctness of each statement. All statements in these particulars are made on the without responsibility part of BROE auctioneers or the vendor or lessor. No statement in these particulars is to be relied upon as a statement or representation of fact. Neither BROE auctioneers nor anyone in its employment or acting on its behalf has authority to make any representation or warranty in relation to this property. Nothing in these particulars shall be deemed to be a statement that the property is in good repair or condition or otherwise nor that any services or facilities are in good working order. Photographs may show only certain parts and aspects of the property at the time when the photographs were taken and you should rely upon actual inspection. No assumption should be made in respect of parts of the property not shown in photographs. Any areas, measurements or distances are only approximate. Any reference to alterations or use is not intended to be a statement that any necessary planning, building regulation, listed building or any other consent has been obtained.
Directors: J. Broe, C. Leap. Registered in Ireland No. 53273



Tower House, Monastery Road,
Clondalkin Village, Dublin 22
www.broe.ie

01 459 4433