

For Sale

Asking Price: €495,000

Sherry
FitzGerald
O'Neill



Ballycommane, Durrus, Co. Cork.
P75 EN80

BER C1

sherryfitz.ie



Delightful restored and extended 5 bedroom, traditional farmhouse, set on 0.5 acre approximately of mature landscaped gardens and located in a sheltered, sunny position, just 4 kilometres from the coastal West Cork village of Durrus. The property enjoys magnificent views over the varied countryside and is just 6 miles approx., from the thriving maritime and commercial town of Bantry.

The property is set in a peaceful, private, rural setting, approached via a country lane. The house has been carefully renovated, extended and restored to maximise the light and ambience. The many attractive features include double glazed windows, multi fuel stove in living room, oil fired central heating, modern kitchen and bathroom fittings.

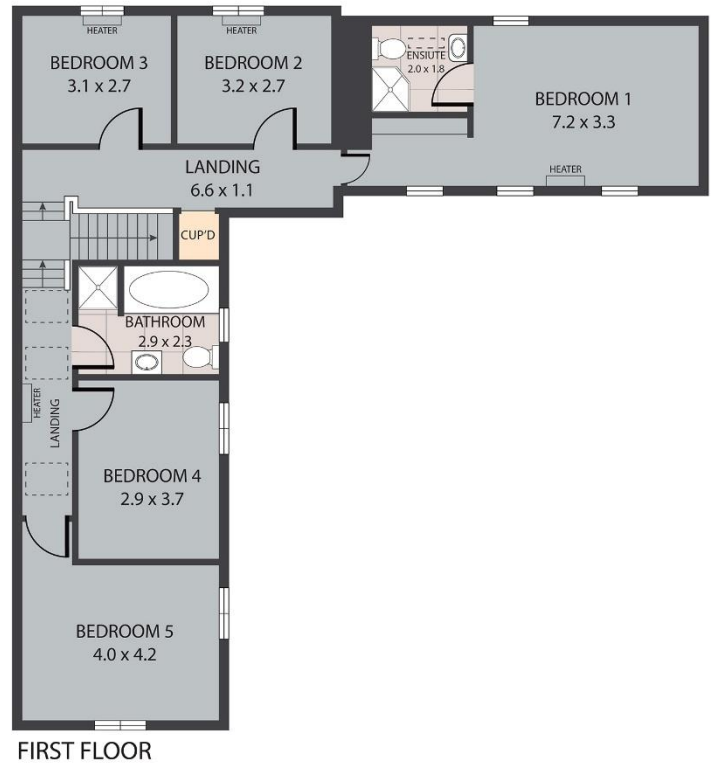
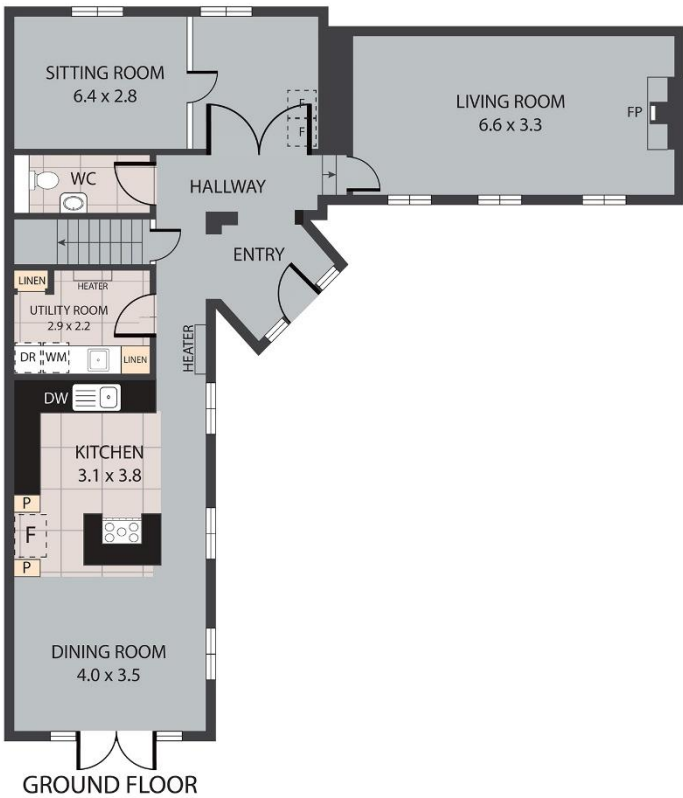
The accommodation on the ground floor includes entrance hallway, a large family living room, spacious and light filled kitchen / dining room with double doors leading off, utility room and guest wc. There are 5 double bedrooms, including a master ensuite bedroom and a large family bathroom upstairs.

The services include gas fired central heating, private water supply, drainage via septic tank, electricity and broadband.

The house is set in 0.5 acre of mature, landscaped gardens with a mix of lawns and a feature enclosed seating and bbq area. The property also benefits from several small attached storage units.

Durrus is a coastal village on the 'Wild Atlantic Way' where the Sheep's Head and Mizen Peninsulas meet. Bantry town is less than a fifteen minute drive whilst the attractive West Cork villages of Ballydehob, Schull, Ahakista and Kilcrohane are all within close proximity. Cork City is just over a one hour commute.





BALLYCOMMANE, DURRUS P75 EN80

TOTAL APPROX. FLOOR AREA 187 SQ.M

Whilst every attempt has been made to ensure the accuracy of the floor plan contained here, measurements of doors, windows, rooms and any other items are approximate and no responsibility is taken for any error, omission, or misstatement. This plan is for illustrative purposes only and should be used as such by any prospective purchaser.



NEGOTIATOR
Olivia Hanafin
Sherry FitzGerald O'Neill
Wolfe Tone Square, Bantry,
Co Cork
T:027 31030
E: olivia@sfoneill.ie

VIEWINGS
Strictly by prior Appointment

ENERGY RATING
Rating: C1
BER No.: 116318825
EPI: 157.3 kWh/m²/yr

sherryfitz.ie
sfoneill.ie
daft.ie
myhome.ie
rightmove.co.uk

CONDITIONS TO BE NOTED: A full copy of our general brochure conditions can be viewed on our website at <http://www.sherryfitz.ie/terms>, or can be requested from your local Sherry FitzGerald office. We strongly recommend that you familiarise yourself with these general conditions. While care has been taken to ensure that information contained in Sherry FitzGerald publications is correct at the time of publication, changes in circumstances after the time of publication may impact on the accuracy of this. PSRA Registration No. 004158