

For Sale

Asking Price: €650,000

**Sherry
FitzGerald**
O'Leary Kinsella



Donaghmore,
Ballygarrett,
Gorey,
Co. Wexford
Y25 A9P2



sherryfitz.ie



This immaculate 3-bedroom coastal bungalow, located in the sought-after area of Donaghmore, Ballygarrett, offers the perfect blend of modern living and serene countryside surroundings. With a spacious 151.6sqm of beautifully designed living space, this home is a must-see for those looking for both style and functionality.

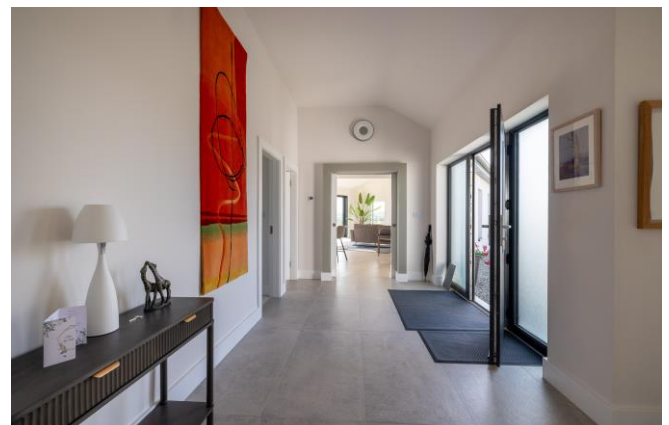
The bungalow boasts a sleek, modern design with high-end finishes throughout. Each room has been thoughtfully planned to ensure maximum comfort and style. The generous living space offers a large, open-plan living and dining area, with stunning sea views, ideal for family gatherings and entertaining.

The property includes three spacious bedrooms, each with ample natural light and built-in storage. Every inch of the home has been finished to the highest standard, with attention to detail and quality materials throughout.

A highlight of this property is the south-facing rear garden, which benefits from plenty of sunlight throughout the day. This beautiful outdoor space is perfect for outdoor dining, relaxation, or gardening enthusiasts.

Nestled in a quiet and peaceful setting, the home remains conveniently close to Wexford's stunning beaches and local amenities, offering both privacy and accessibility.

Whether you're looking to downsize, find your first home, or simply enjoy a comfortable and modern lifestyle, this bungalow in Donaghmore offers everything you need.



Accommodation

Entrance Hallway 4.45m x 5.72m (14'7" x 18'9"): at widest point, tiled flooring.

Kitchen/Dining/Living 6.42m x 9.77m (21'1" x 32'1"): at widest point, laminate wood flooring, fitted kitchen units with matching island and breakfast bar, integrated fridge freezer, electric hob, electric oven, integrated dishwasher, feature fireplace and sliding door to garden.

Bedroom 1 3.90m x 3.00m (12'10" x 9'10"): carpet flooring.

Utility Room 3.90m x 2.88m (12'10" x 9'5"): at widest point, tiled flooring, plumbed for washing machine and dryer.

Bedroom 2 3.57m x 5.93m (11'9" x 19'5"): carpet flooring.

Bathroom 2.09m x 3.51m (6'10" x 11'6"): tiled flooring and walls, shower, WC and wash hand basin.

Master Bedroom 3 3.90m x 5.16m (12'10" x 16'11"): carpet flooring, built-in wardrobes and sliding door to garden.

Ensuite 2.23m x 2.50m (7'4" x 8'2"): tiled flooring and walls, shower, WC and wash hand basin.





Special Features & Services

- Spacious & Modern Design 1632 sq ft.
- South-Facing Rear Garden: A sun-filled garden perfect for outdoor dining, relaxation, and gardening.
- Quiet yet Convenient Location: Peaceful setting in Donaghmore, with easy access to Wexford's beaches
- 18 Solar Panels.
- Walk in condition.
- Stunning views.
- Finished to a very high standard.





Directions
Y25A9P2



GROUND FLOOR



Whilst every attempt has been made to ensure the accuracy of the floor plan contained here, measurements of doors, windows, rooms and any other items are approximate and no responsibility is taken for any error, omission, or misstatement. This plan is for illustrative purposes only and should be used as such by any prospective purchaser. The services, systems and applications shown here have not been tested and no guarantee as to their operability or efficiency can be given.

COPYRIGHT: SHOWCASE MEDIA.IE



CONTACT

Sherry FitzGerald O'Leary Kinsella
Tara View, Esmonde Street, Gorey,
Co Wexford
T: 053 9430088
E: info@olearykinsella.com

OFFICE OPENING HOURS

Our office opening hours are:
9am – 1pm & 2pm – 5.30pm
Monday to Friday.
Viewings conducted 6 days
(including Saturdays).

VIEWING

Viewing by appointment.

sherryfitz.ie

CONDITIONS TO BE NOTED: A full copy of our general brochure conditions can be viewed on our website at <http://www.sherryfitz.ie/terms>, or can be requested from your local Sherry FitzGerald office. We strongly recommend that you familiarize yourself with these general conditions.
PSRA Registration No. 001510