

For Sale

Asking Price: €695,000



Evergreens, Reen, Union Hall,
Co Cork. P81 TE27

BER D2

sherryfitz.ie



Coastal, 3 bedroom bungalow residence set on 0.5 acres approximately of mature landscaped grounds, located adjacent to Reen Pier and enjoying uninterrupted views of Castletownshend and the scenic Harbour.

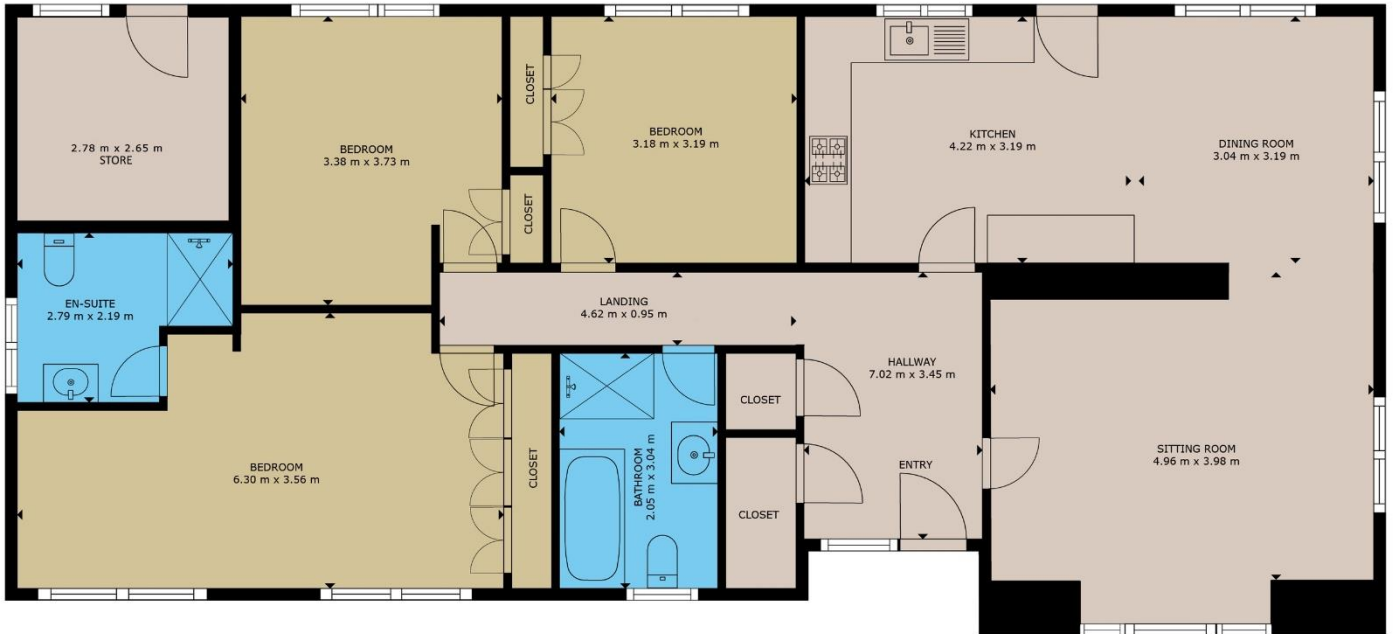
The bungalow is bright and spacious and is designed to maximise light and the magnificent views. The property comprises 136.4 sq. m. / 1468 sq. ft. approx. of living space and is laid out in well-designed rooms. The house has the benefit of oil-fired central heating, solid fuel stove, pvc double glazed windows, tarmac driveway with stone walls and entrance pillars.

The accommodation includes entrance hallway, sitting room, kitchen/dining room, 3 bedrooms, family bathroom and wc. The large master bedroom is ensuite with panoramic harbour views.

The grounds, containing 0.5 acres approx. are laid out in lawns, mature specimen trees and shrubs and these create a private home. The elevated site and side patio area enjoy breath taking views. The property is gated and benefits from an attractive stone-built entrance.

Evergreens enjoys an exceptional location convenient to Union Hall village and by boat or car to Castletownshend. This West Cork area is a premier sailing and tourist destination. The villages are noted for the Bars, Restaurants, scenic vistas and unique character. Evergreens is close to Skibbereen town and the many villages that make this part of West Cork such a vibrant and popular area.





GROSS INTERNAL AREA

TOTAL : 136.4 m²

Whilst every attempt has been made to ensure the accuracy of the floor plan contained here, measurements of doors, windows, rooms and any other items are approximate and no responsibility is taken for any error, omission, or misstatement. This plan is for illustrative purposes only and should be used as such by any prospective purchaser.



NEGOTIATOR
Niamh Moloney
Sherry FitzGerald O'Neill
37 North Street, Skibbereen,
Co Cork
T: 028 21404
E: info@sfoneill.ie

VIEWINGS
Strictly By Appointment Only

ENERGY RATING
BER: D2
Cert No.: 117513374
EPI: 294.79 kWh/m²/yr

sherryfitz.ie
sfoneill.ie
myhome.ie
daft.ie
propgoluxury.com

CONDITIONS TO BE NOTED: A full copy of our general brochure conditions can be viewed on our website at <http://www.sherryfitz.ie/terms>, or can be requested from your local Sherry FitzGerald office. We strongly recommend that you familiarise yourself with these general conditions. While care has been taken to ensure that information contained in Sherry FitzGerald publications is correct at the time of publication, changes in circumstances after the time of publication may impact on the accuracy of this. PSRA Registration No. 004158