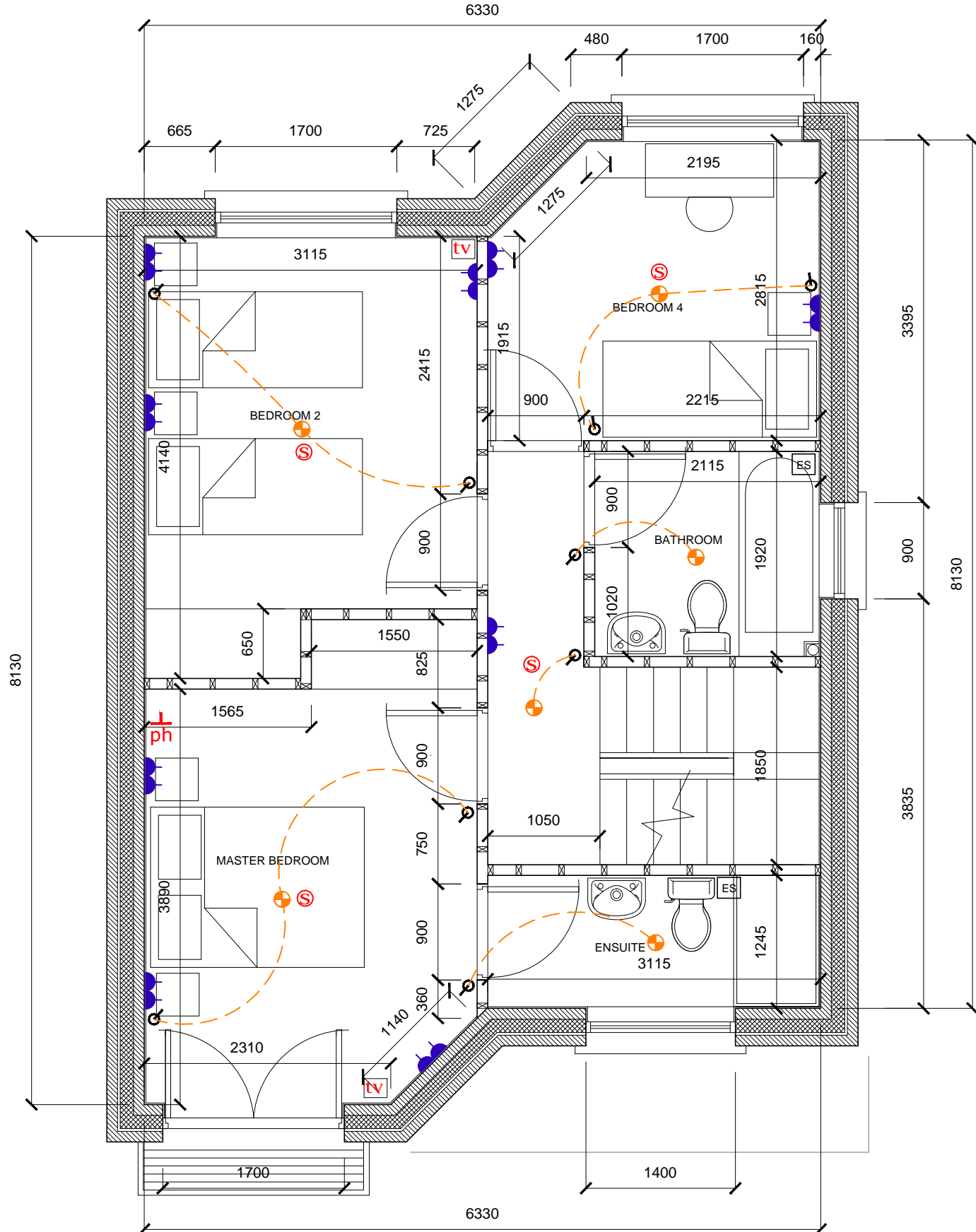
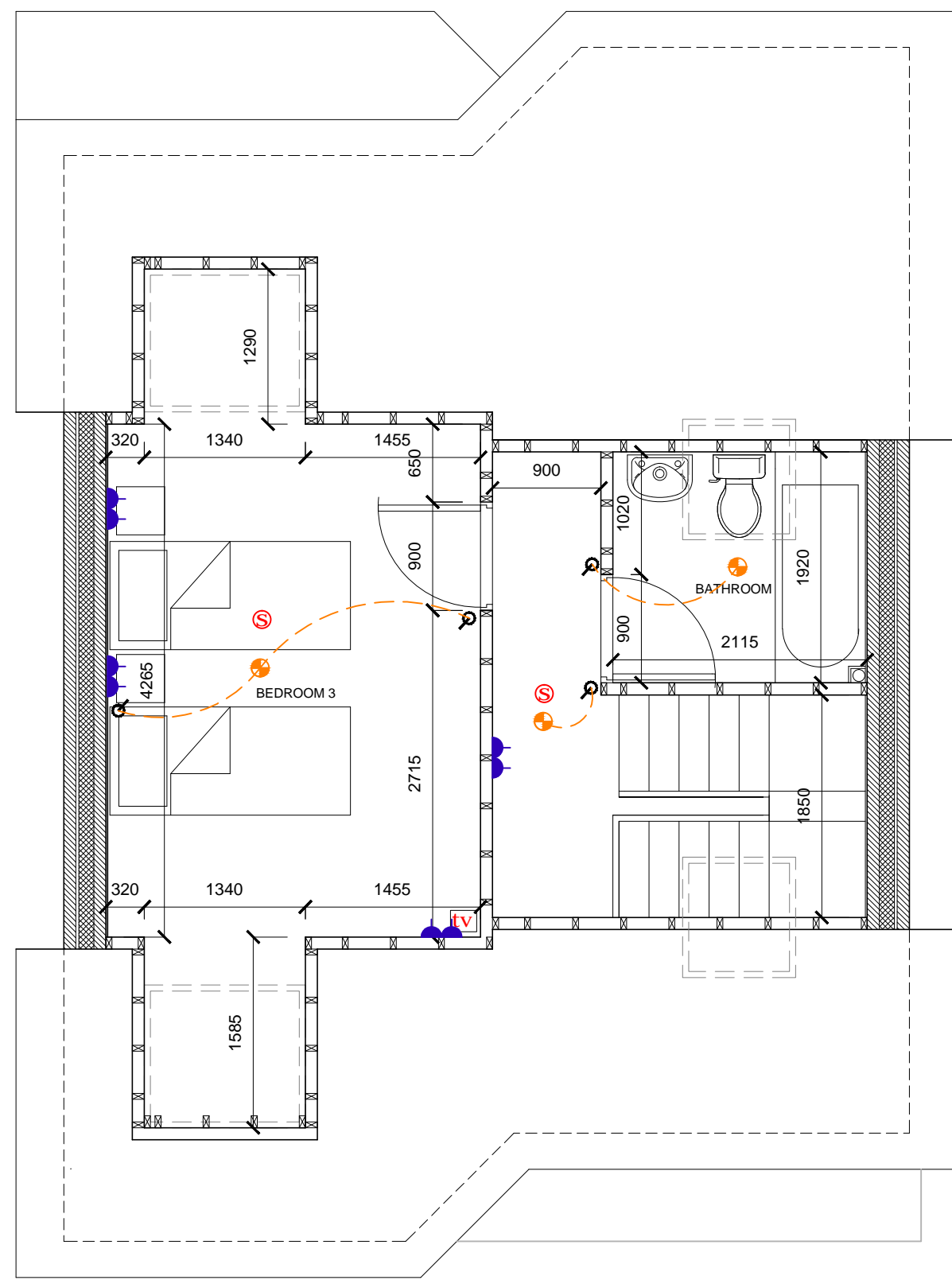


01 GROUND FLOOR PLAN  
SH:02 Scale 1:50 - (Area-55m2)



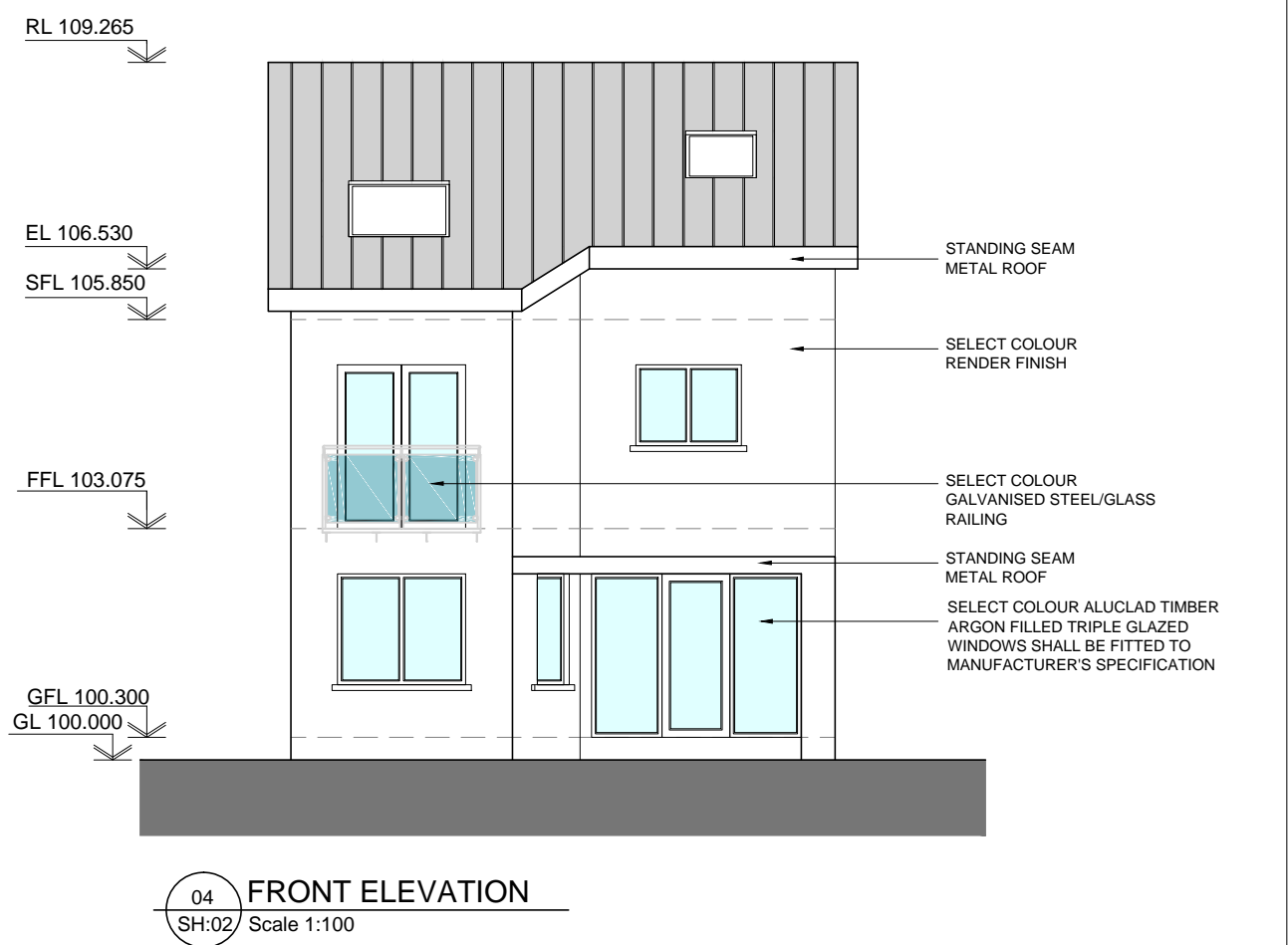
02 FIRST FLOOR PLAN  
SH:02 Scale 1:50 - (Area - 51m2)



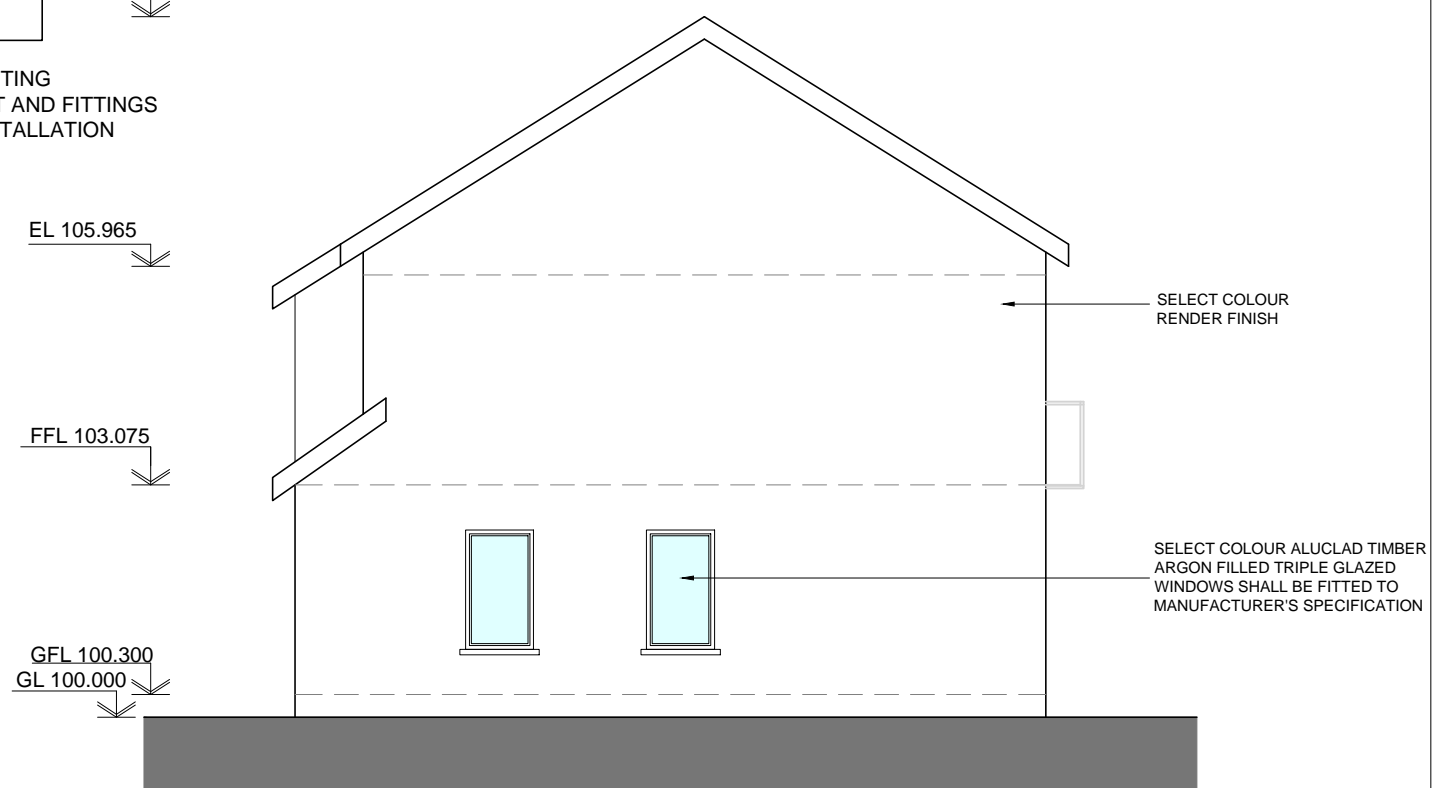
03 SECOND FLOOR PLAN  
SH:02 Scale 1:50 - (Area - 30m2)

ELECTRICAL LEGEND:	
FUSE BOARD	[PB]
HEAT DETECTOR	[H]
SMOKE DETECTOR	[S]
COOKER SWITCH	[C]
HEATING CONTROLS	[HC]
PENDANT LIGHT	[P]
EXTERNAL WALL UP/DOWN LIGHT	[E]
WALL MOUNTED LIGHT	[W]
PHONE POINT	[ph]
TV POINT	[tv]
DOUBLE SOCKET	[D]
OVER COUNTER DOUBLE SOCKETS	[D]
SINGLE SOCKET	[S]
DOOR BELL	[B]
RECESSED LED CEILING LIGHTS (waterproof fittings in bathroom areas)	[R]
PICTURE LIGHT FITTING (OWN SWITCH)	[P]
CARBON MONOXIDE DETECTOR	[CM]
SINGLE LIGHT SWITCH	[L]
DOUBLE LIGHT SWITCH	[L]
MECHANICAL VENTILATION	[MV]
EXTERNAL SOCKET	[E]
RADIATOR POSITION	[R]
ELECTRIC SHOWER	[ES]

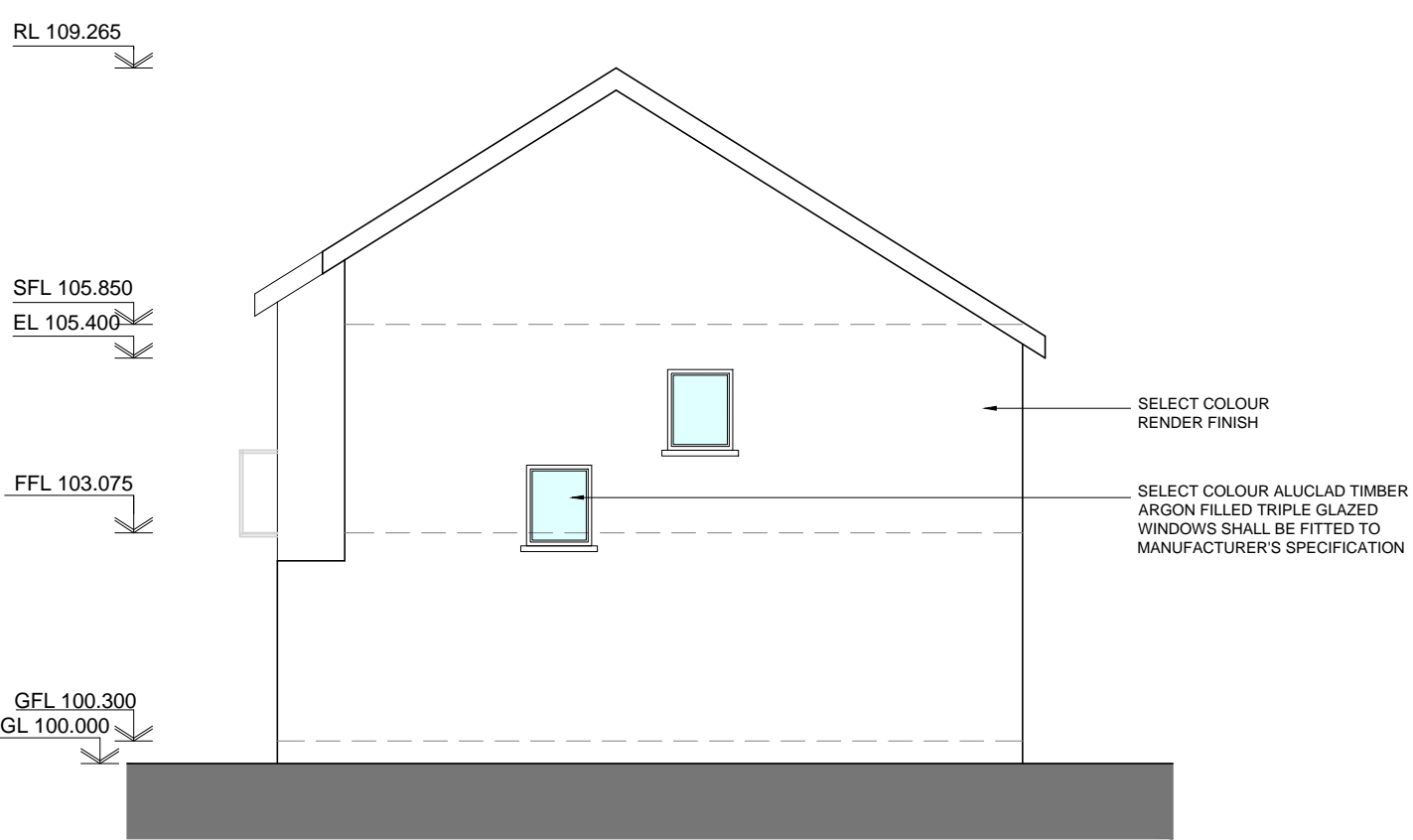
ELECTRICAL LAYOUT IS FOR COSTING PURPOSES ONLY. EXACT LAYOUT AND FITTINGS TO BE CONFIRMED PRIOR TO INSTALLATION



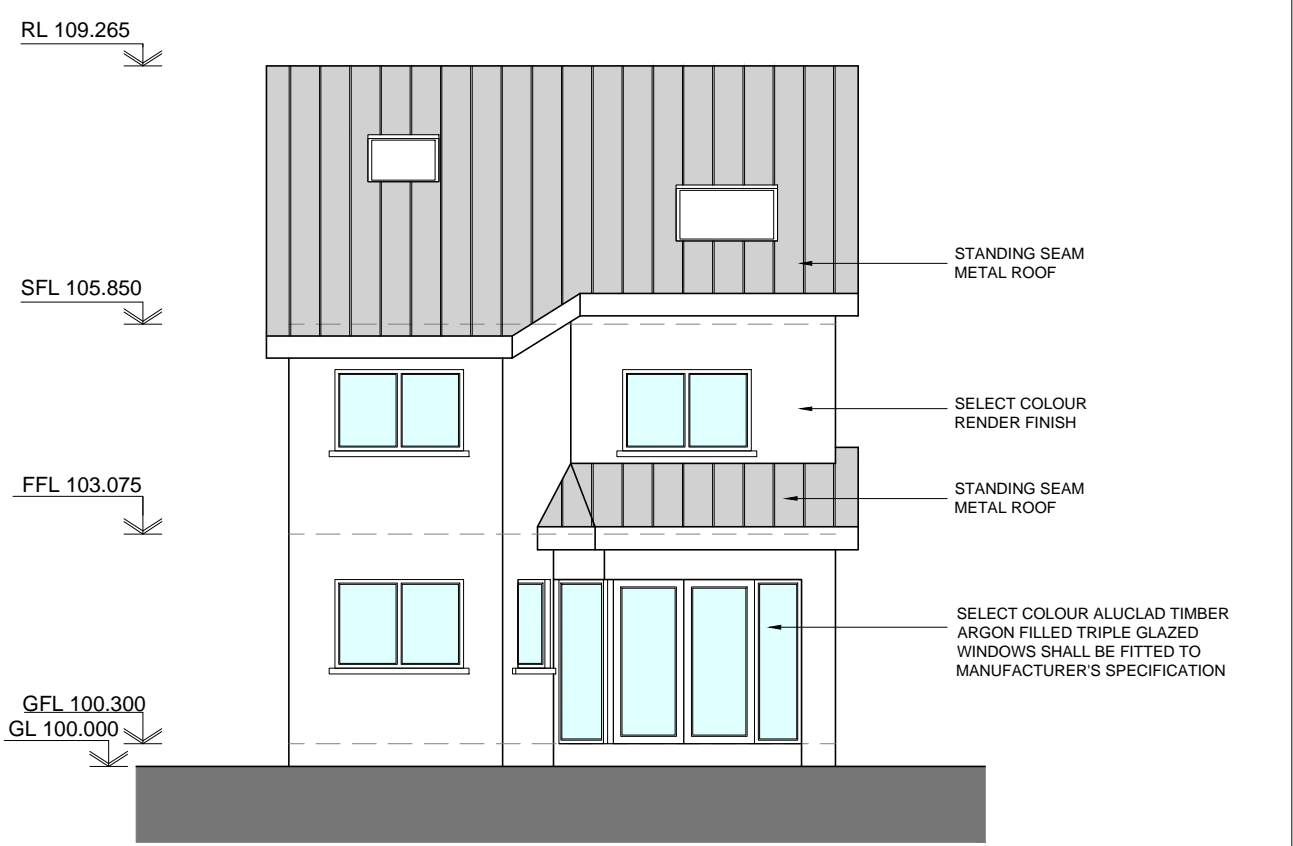
04 FRONT ELEVATION  
SH:02 Scale 1:100



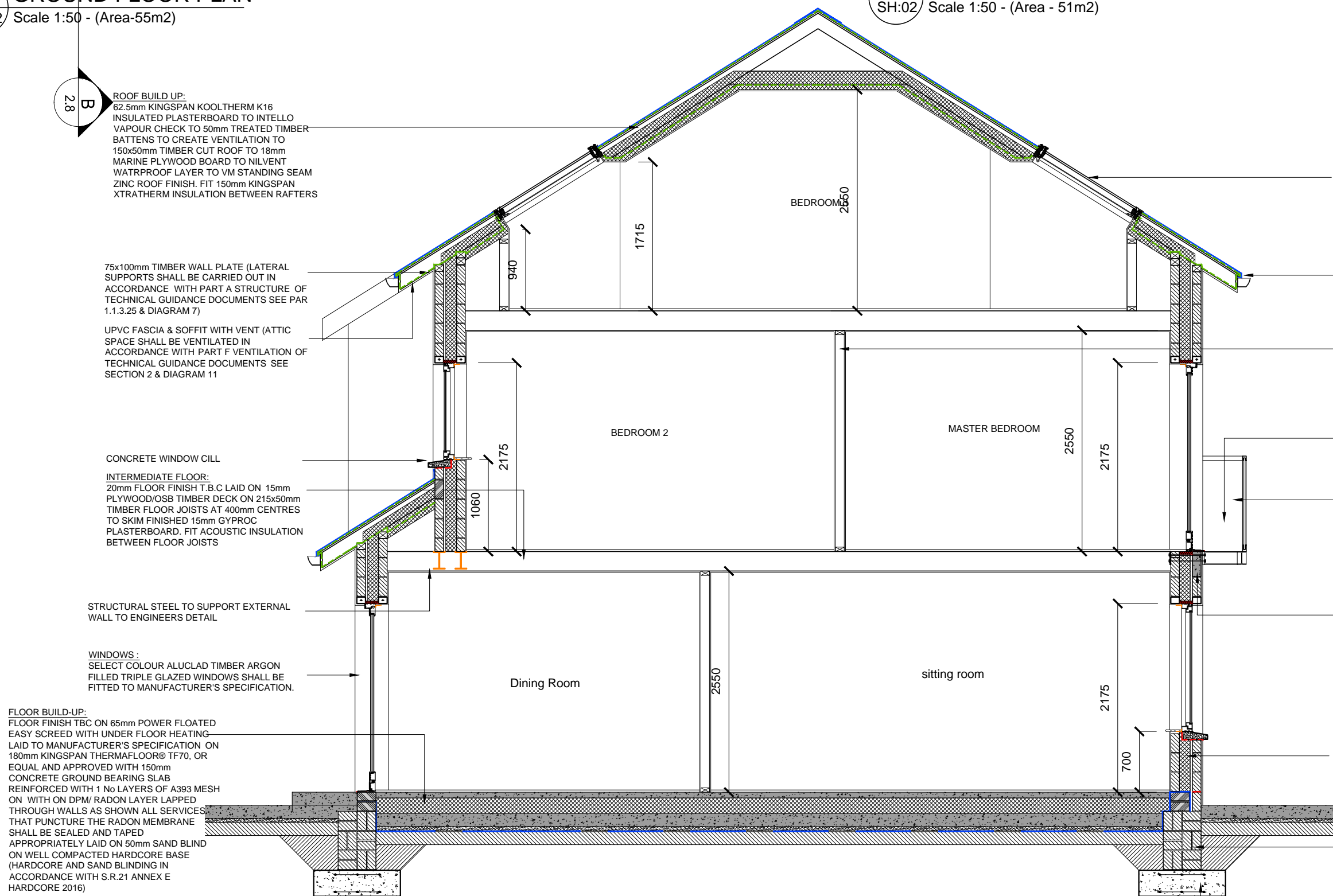
05 SIDE ELEVATION  
SH:02 Scale 1:100



07 SIDE ELEVATION  
SH:02 Scale 1:100



06 REAR ELEVATION  
SH:02 Scale 1:100



08 SECTION B-B  
SH:02 Scale 1:50

150x400mm TOP HUNG VELUX ROOFLIGHT FITTED TO MANUFACTURER'S INSTRUCTIONS WITH ALL NECESSARY FLASHINGS AND TRIMS. BOTTOM OF VELUX WINDOW TO BE A MAXIMUM OF 1100mm ABOVE FINISHED FLOOR LEVEL.

SELECT COLOUR ALUMINIUM/PVC FASCIA AND SOFFIT WITH PVC RAINWATER GOODS

INTERNAL STUD WALL: SKIM FINISHED 12.5mm GYPROC PLASTERBOARD TO BOTH SIDES OF 100x50mm TIMBER STUDWORK WALL. FIT 100mm ACOUSTIC INSULATION BETWEEN ALL INTERNAL STUDWORK WALLS

GLAZED BALUSTRADE FITTED TO MANUFACTURER'S SPECIFICATION

BALCONY: STEEL FRAME WALL MOUNTED BALCONY FIXED TO CAST INSITU REINFORCED CONCRETE BEAM TO ENGINEER'S SPECIFICATION. STEEL FRAME WORK SHALL BE SIZED TO ENGINEER'S SPECIFICATION WITH 20x150mm TIMBER DECKING FIXED TO STEEL FRAME WORK TO MANUFACTURER'S SPECIFICATION.

CAST INSITU REINFORCED CONCRETE BEAM SUPPORTING WALL MOUNTED BALCONY

WALL BUILD-UP 1: PAINTED INTERNAL FINISH WITH SKIM FINISH ON SCRATCH COAT PLASTER ON 100x215x440mm CONCRETE BLOCK WITH 150mm CAVITY FILLED WITH 125mm XTRATHERM CAVITY THERM RIGID INSULATION BOARD OR EQUAL AND APPROVED WITH 100x215x440mm CONCRETE BLOCK TIED BACK TO INNER LEAF WITH MASONRY WALL TIES TO COMPLY WITH PART 4 STRUCTURE OF TECHNICAL GUIDANCE DOCUMENTS SEE PAR 1.1.3.27 & DIAGRAM 9) WITH 20mm SAND/CEMENT MORTAR FINISH

435mm RISING BLOCKWORK SHALL BE LAID IN COURSES COMPRISING OF 100x215x440mm CONCRETE BLOCK AND 100x215x440mm CONCRETE BLOCK LAID ON THE FLAT AS SHOWN. QUINITE BLOCKS TO BE USED WHERE INDICATED

1000 x 400mm 30N STRIP FOUNDATION SHALL BE REINFORCED WITH 2-NUMBERS OF A300 REINFORCING MESH ONE ON TOP OF THE OTHER (BARS @ 100mm CENTRES) AS SHOWN WITH A MINIMUM COVER OF 75mm & T10 LBAR @ 200mm CENTRES ON EACH FACE AS SHOWN