

TO LET



## 2 F&B Kiosk Units, Meridian Point Shopping Centre, Church Road, Greystones, Co. Wicklow

€25,000 per annum (per kiosk)

**COMING SOON – 2 F&B KIOSK UNITS**

DOUGLAS NEWMAN GROUP  
**DNG**  
COMMERCIAL

## COMING SOON – 2 F&B KIOSK UNITS

### Description

Meridian Point Shopping Centre will soon be launching two food and beverage Kiosk opportunities. The single storey restaurant/kiosk will benefit from an enclosed courtyard which will cater to ample customer seating. The courtyard will operate a retractable roof to cater for year round dining and changing weather.

This opportunity is suitable for a single occupier to take the entire or two operators can occupy independently.

### Meridian Point Shopping Centre

The Kiosk units will be located within the Meridian Point Shopping Centre, a well managed and maintained centre, extending to approximately 2,604 sq.m. (28,026 sq.ft.) with 20 tenancies in total, while there are 181 car spaces available at ground level, managed by Euro Car Parks and providing reliability of access for the extensive catchment visiting this town centre location.

Meridian Point is a busy centre off main street, comprising a range of retail units facing on to a central courtyard, boasting a mix of international, national and local retailers, with generous car-parking to the rear.

The centre is anchored by Sports Direct and the post office and other well-known retailers include Costa Coffee, The Grafton Barber and I.T. Star, as well as a mix of popular local brands including Source Bulk Foods, CHAKRA by Jaipur, etc.







## Location

Greystones is a thriving coastal town in north Co. Wicklow situated approximately 32km south of Dublin city centre and serving a wide catchment. The town benefits from excellent transport links including the N11, the DART commuter train services and a number of Dublin Bus routes providing regular services to and from Dublin city centre.

Meridian Point is located in the heart of Greystones town centre, in a prominent position, off Main Street (Church Road).

Other adjacent occupiers include Supervalu, McCauley pharmacy and a range of local shops and businesses, including banks/building societies and a host of artisan food stores, restaurants/cafes and coffee shops, creating an attractive, vibrant town centre.

## Details

Rent: €25,000 per annum (per kiosk)

BER: TBC

Availability: Q3 2025

## FURTHER INFORMATION

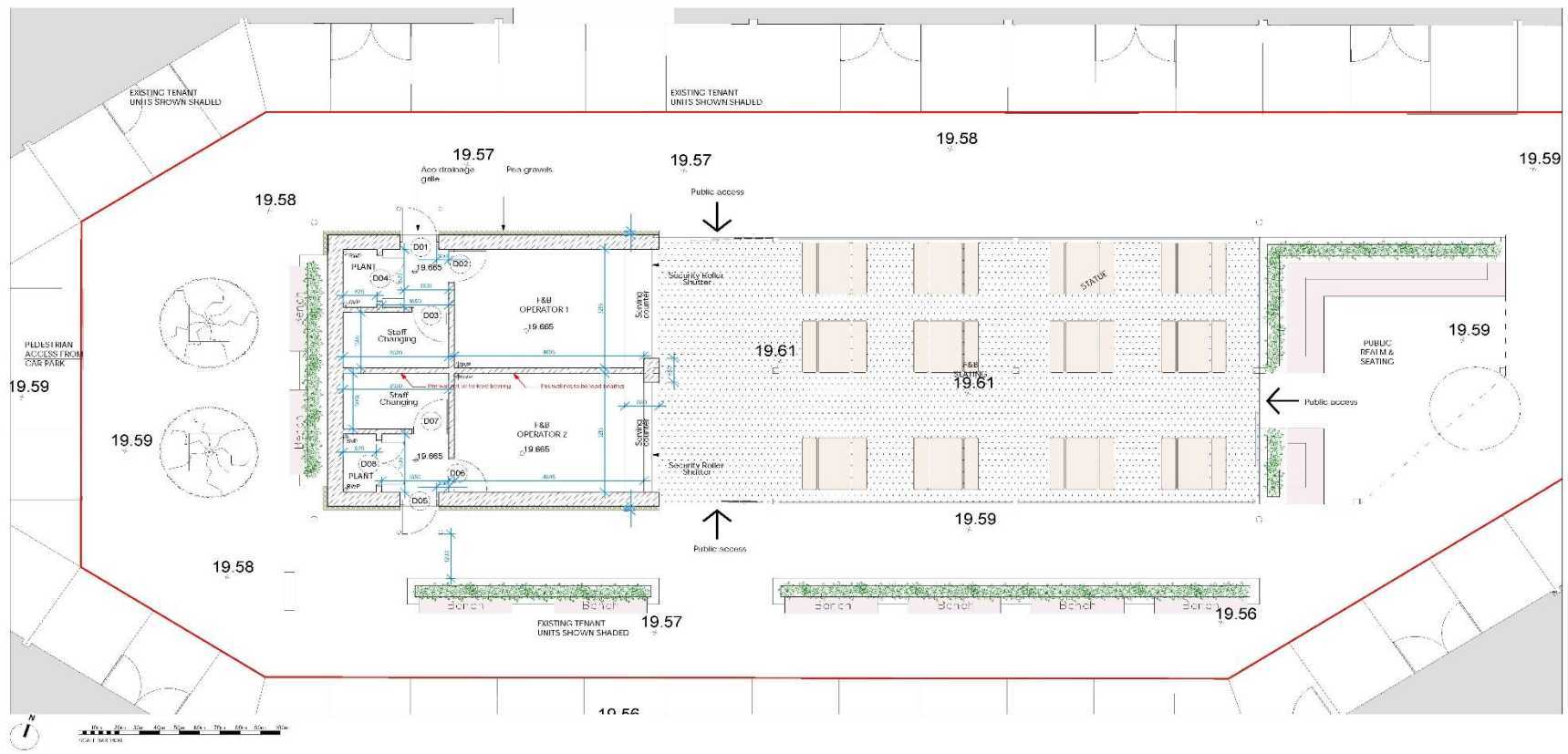
Viewing: By appointment with the sole selling letting DNG Commercial.

Ros Tierney  
01 4912600  
commercial@dng.ie

PSL No.

DNG Commercial for themselves and for the vendors or lessors of the property whose Agents they are, give notice that: (i) The particulars are set out as a general outline for the guidance of intending purchasers or lessees, and do not constitute part of, an offer or contract. (ii) Any intending purchasers or tenants must not rely the descriptions, dimensions, references to condition nor necessary permissions for use and occupation as statements or representations of fact but must satisfy themselves by inspection or otherwise as to the correctness of each of them. (iii) No person in the employment of DNG Commercial has any authority to make or give representation or warranty whatsoever in relation to this development. DNG Commercial accept no liability (including liability to any prospective purchaser or lessee by reason of negligence or negligent misstatement) for loss or damage caused by any statements, opinions, information or other matters (expressed or implied) arising out of, contained in or derived from, or for any omissions from this brochure.

DO NOT SCALE FROM THIS DRAWING - required dimensions only to be used for setting out.  
Any dimension discrepancies found on site are to be brought to the attention of the architect or certified  
dimensioner immediately. INCLUSIVE ASSET



1 Proposed Kiosk Layout  
Scale: 1:100

REVISION NOTES		
Rev	Date	Notes



Project:	MERIDIAN POINT	Job No.:	57630
Drawing Title:	KIOSK LAYOUT PLAN	Drawing No.:	206 / 1
Date:	October 24	Drawn:	KM
Client:	GSC Meridian Limited	Checked:	-
Scale:	1:100@A1		

FOR TENDER