

Contemporary two bedroom
apartment offering city views

212 Sancton Wood, Heuston South Quarter, Kilmainham, Dublin 8



Contemporary two bedroom apartment offering city views

212 Sancton Wood, Heuston South Quarter, Kilmainham, Dublin 8



Contemporary two bedroom apartment offering city views

212 Sancton Wood, Heuston South Quarter, Kilmainham, Dublin 8



About this property

212 Sancton Wood is a spacious, modern two-bedroom fully furnished apartment that perfectly blends style and functionality, located in the highly desirable Heuston South Quarter.

The apartment offers a spacious and light-filled interior. The open plan living and dining area provides an excellent space for both relaxation and entertaining.

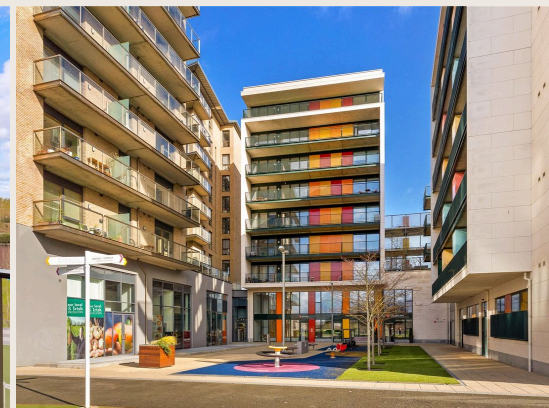
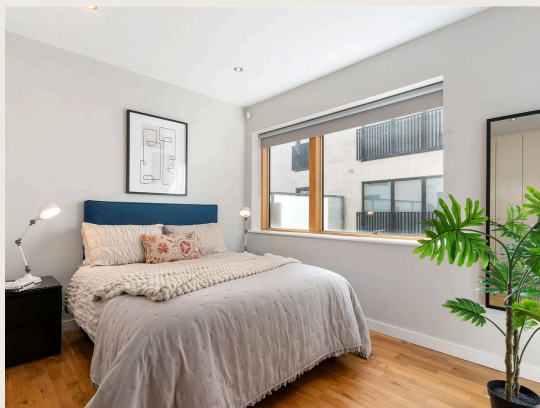
The apartment benefits from two generously proportioned bedrooms, both of which enjoy an abundance of natural light, double wardrobe and en-suite. The master bedroom also features private access to a balcony. There is an additional guest bathroom. The interiors are finished to the highest standards, with well-designed built-in storage. In all the accommodation extends to approximately 82 sq m/883 sq ft. A full layout of the accommodation is shown on the adjoining floorplans.

Externally, the apartment enjoys access to a spacious balcony, ideal for outdoor living. The apartment's design ensures that every detail has been thoughtfully considered.



Contemporary two bedroom apartment offering city views

212 Sancton Wood, Heuston South Quarter, Kilmainham, Dublin 8



Contemporary two bedroom apartment offering city views

212 Sancton Wood, Heuston South Quarter, Kilmainham, Dublin 8

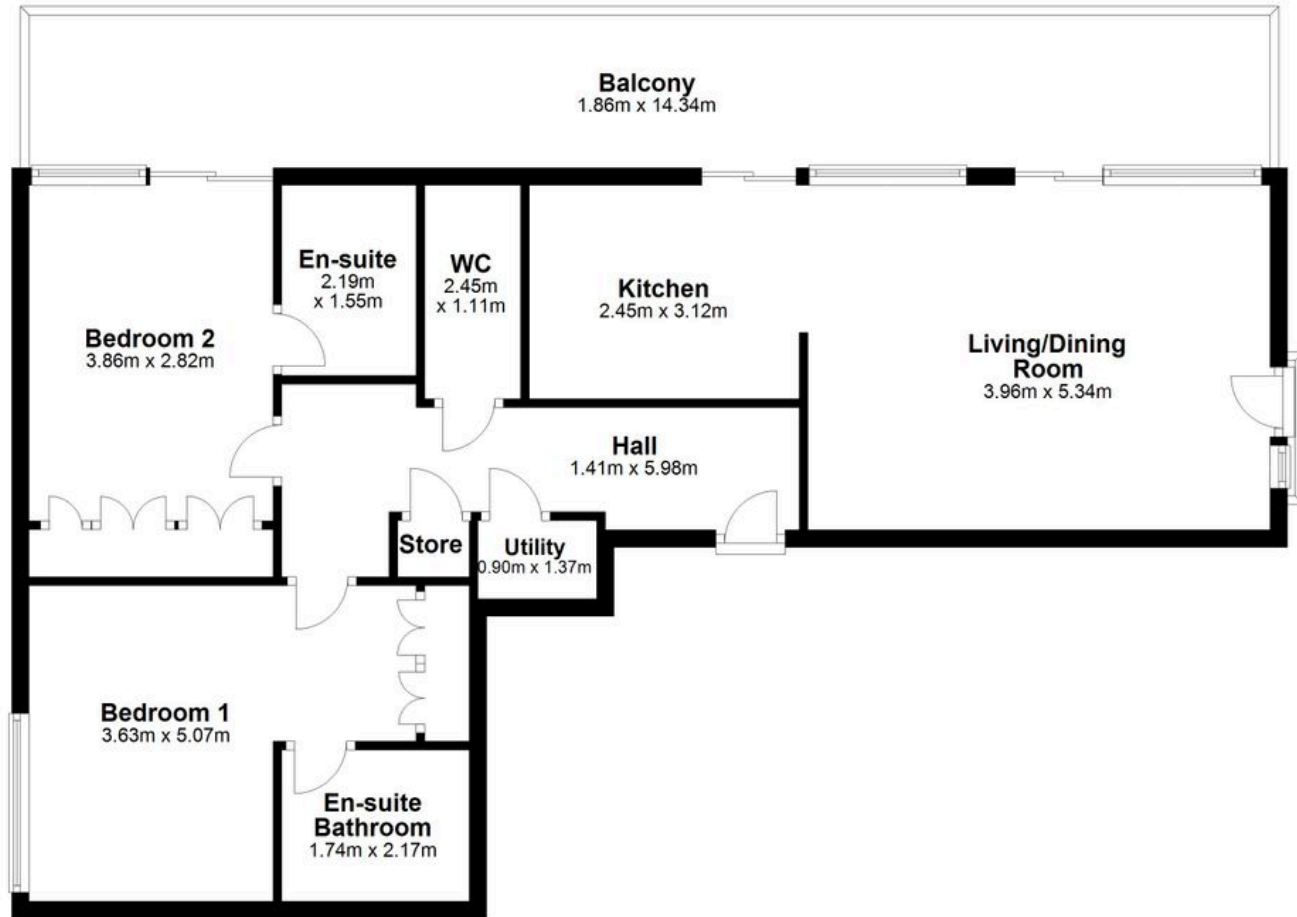


Plans



883 sq ft

Floor Plan



212 The Sancton Building HSO

Contemporary two bedroom apartment offering city views

212 Sancton Wood, Heuston South Quarter, Kilmainham, Dublin 8

savills



Local Area

Heuston South Quarters, located in Dublin 8, is a historic and culturally rich area just south of the River Liffey and west of Dublin's city centre. This vibrant district is renowned for its significant landmarks, including Kilmainham Gaol, the Irish Museum of Modern Art (IMMA), and the Phoenix Park. The area is well-served by public transport, including Dublin Bus and the Luas tram service, making it easily accessible. Heuston Station, the main rail hub, is just a few minutes stroll away.



Contemporary two bedroom apartment offering city views

212 Sancton Wood, Heuston South Quarter, Kilmainham, Dublin 8



Enquire



Rose Lyle

Dublin - Country
086 201 2911
rose.lyle@savills.ie



Maria Lawler

Dublin - Country
086 812 2504
maria.lawler@savills.ie

More Information



[View on website](#)



[View Digital Brochure](#)



[Property Search](#)

Viewing strictly by appointment

Property Ref: DUY250031

Residential & Country

33 Molesworth Street, D02 CP04
+353 (0) 1 618 1300



Important Notice: Savills, its clients and any joint agents give notice that 1: They are not authorised to make or give any representations or warranties in relation to the property either here or elsewhere, either on their own behalf or on behalf of their client or otherwise. They assume no responsibility for any statement that may be made in these particulars. These particulars do not form part of any offer or contract and must not be relied upon as statements or representations of fact. 2: Any areas, measurements or distances are approximate. The text, photographs and plans are for guidance only and are not necessarily comprehensive. It should not be assumed that the property has all necessary planning, building regulation or other consents and Savills have not tested any services, equipment or facilities. Purchasers must satisfy themselves by inspection or otherwise. *powered by* **FluoPro**