

Elegant Georgian country house

Glebe House, Castle Ellis, The Ballagh, Co Wexford, Y21 TX30

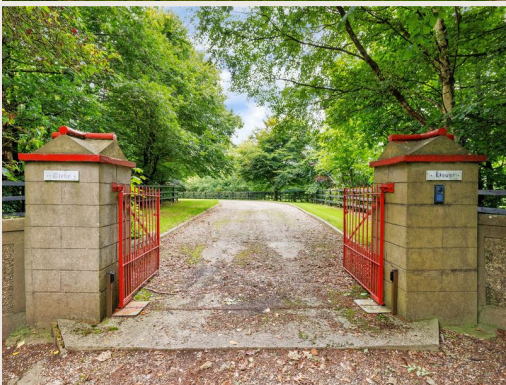
savills



Elegant Georgian country house

Glebe House, Castle Ellis, The Ballagh, Co Wexford, Y21 TX30

savills



Elegant Georgian country house

Glebe House, Castle Ellis, The Ballagh, Co Wexford, Y21 TX30

savills

About this property

Glebe House is an elegant Georgian residence dating from 1810, extensively refurbished and presented in excellent condition, set on approximately 18.6 acres of productive grassland. In the same family for 25 years, the house underwent a comprehensive renovation in 2001, carefully preserving its period character while integrating modern comforts. The accommodation is generous, well-balanced and laid out for both family living and entertaining. A welcoming entrance hall with tiled flooring leads to the principal reception rooms, including a spacious dual-aspect dining room and an elegant drawing room, both with open fireplaces. To the rear, a large open-plan kitchen, breakfast and living area forms the heart of the home. A striking brick-built fireplace with wood-burning stove provides a warm focal point. At first floor level, there are five well-proportioned double bedrooms, all en suite, with two also benefitting from walk-in wardrobes. A spacious family bathroom with freestanding bath completes this floor. The lower ground level provides further versatile living space. The outbuildings are a significant feature, arranged around a large courtyard. The gardens and grounds are beautifully curated and rich in mature native trees, many grown from seed by the current owners.



Elegant Georgian country house

Glebe House, Castle Ellis, The Ballagh, Co Wexford, Y21 TX30

savills



Elegant Georgian country house

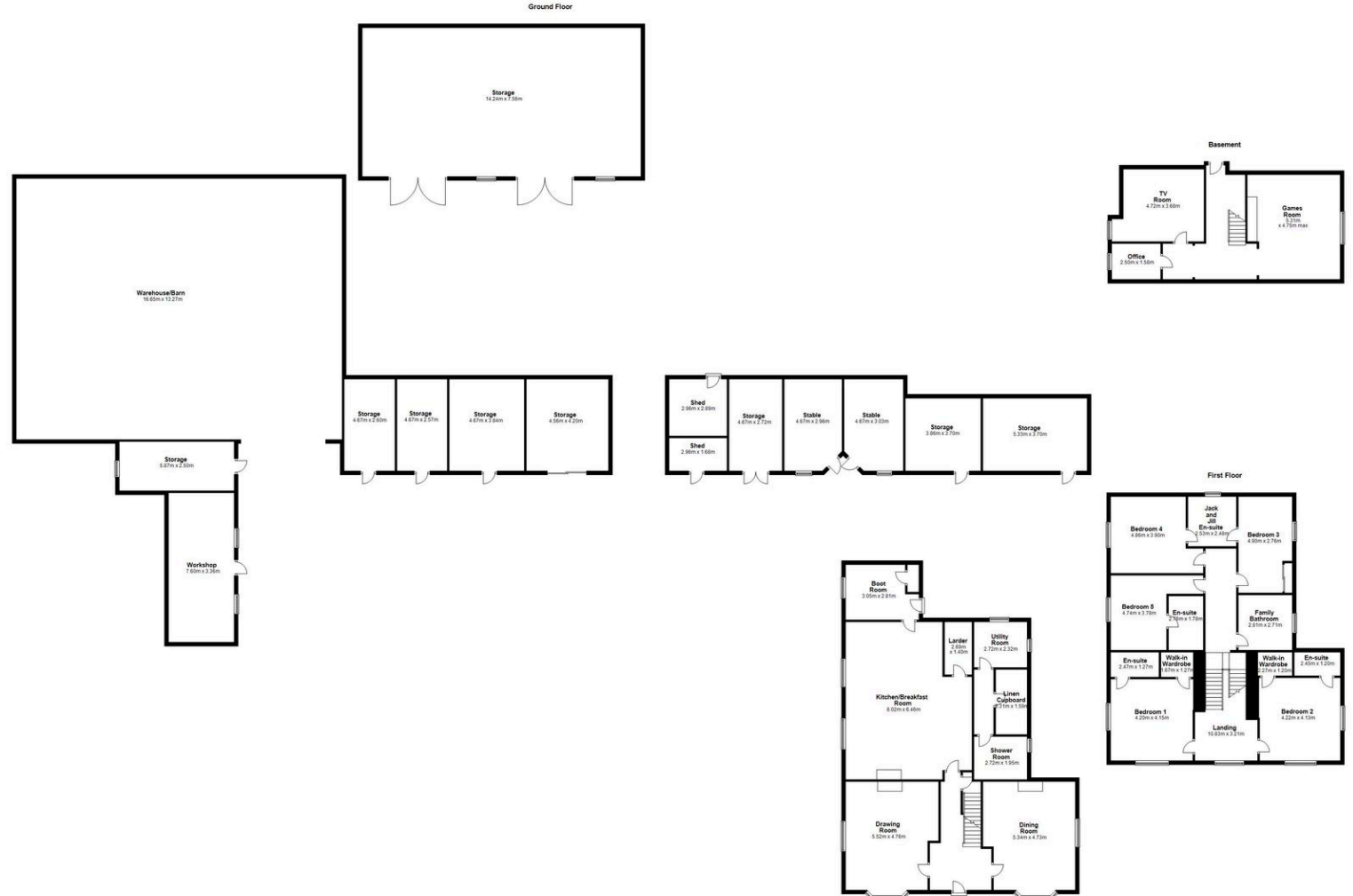
Glebe House, Castle Ellis, The Ballagh, Co Wexford, Y21 TX30



Plans

 3,767 sq ft

 19 acres



Elegant Georgian country house

Glebe House, Castle Ellis, The Ballagh, Co Wexford, Y21 TX30

savills



purpose of identification only, although believed to be correct, its accuracy cannot be guaranteed

Local Area

Glebe House is located in Co. Wexford, a region celebrated for its countryside, coastline and charming villages. The property lies 4 km from Blackwater which provides a good range of amenities. Enniscorthy (13 km) and Wexford Town (17 km) offer a wider selection of services and attractions. The area is noted for its coastline with miles of sandy beaches. Connectivity is excellent with convenient access to the N11 for a direct route to Dublin. Sporting amenities are well catered for with golf and many water-based activities nearby.



purpose of identification only, although believed to be correct, its accuracy cannot be guaranteed

Property Details

Key Features

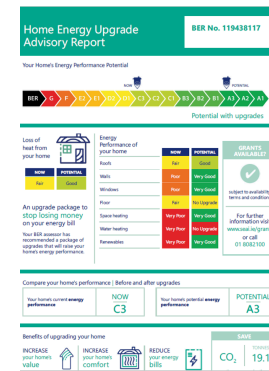
- Set on about 18.6 acres of sweeping lawns and grassland
- A tree-lined private avenue ensuring excellent privacy
- Fully restored interiors
- Useful outbuildings including a barn alongside a series of storage rooms, sheds, stables and workshops with separate side access
- Convenient to Blackwater (4km)
- Enniscorthy (13 km) and Wexford town (17km)

Services & Additional Information

- Mains water to house
- Private well water for the yard
- Septic tank
- Electric car charger
- Fibre broadband connection

BER

BER Rating = C3



Elegant Georgian country house

Glebe House, Castle Ellis, The Ballagh, Co Wexford, Y21 TX30



Enquire



Cianan Duff

Ireland - Country

+353 (0) 86 386 1466

cianan.duff@savills.ie

More Information



[View on website](#)



[View Digital Brochure](#)



[Property Search](#)

Viewing strictly by appointment

Property Ref: DUY220132



Important Notice: Savills, its clients and any joint agents give notice that 1: They are not authorised to make or give any representations or warranties in relation to the property either here or elsewhere, either on their own behalf or on behalf of their client or otherwise. They assume no responsibility for any statement that may be made in these particulars. These particulars do not form part of any offer or contract and must not be relied upon as statements or representations of fact. 2: Any areas, measurements or distances are approximate. The text, photographs and plans are for guidance only and are not necessarily comprehensive. It should not be assumed that the property has all necessary planning, building regulation or other consents and Savills have not tested any services, equipment or facilities. Purchasers must satisfy themselves by inspection or otherwise. *powered by* **FluorPro**