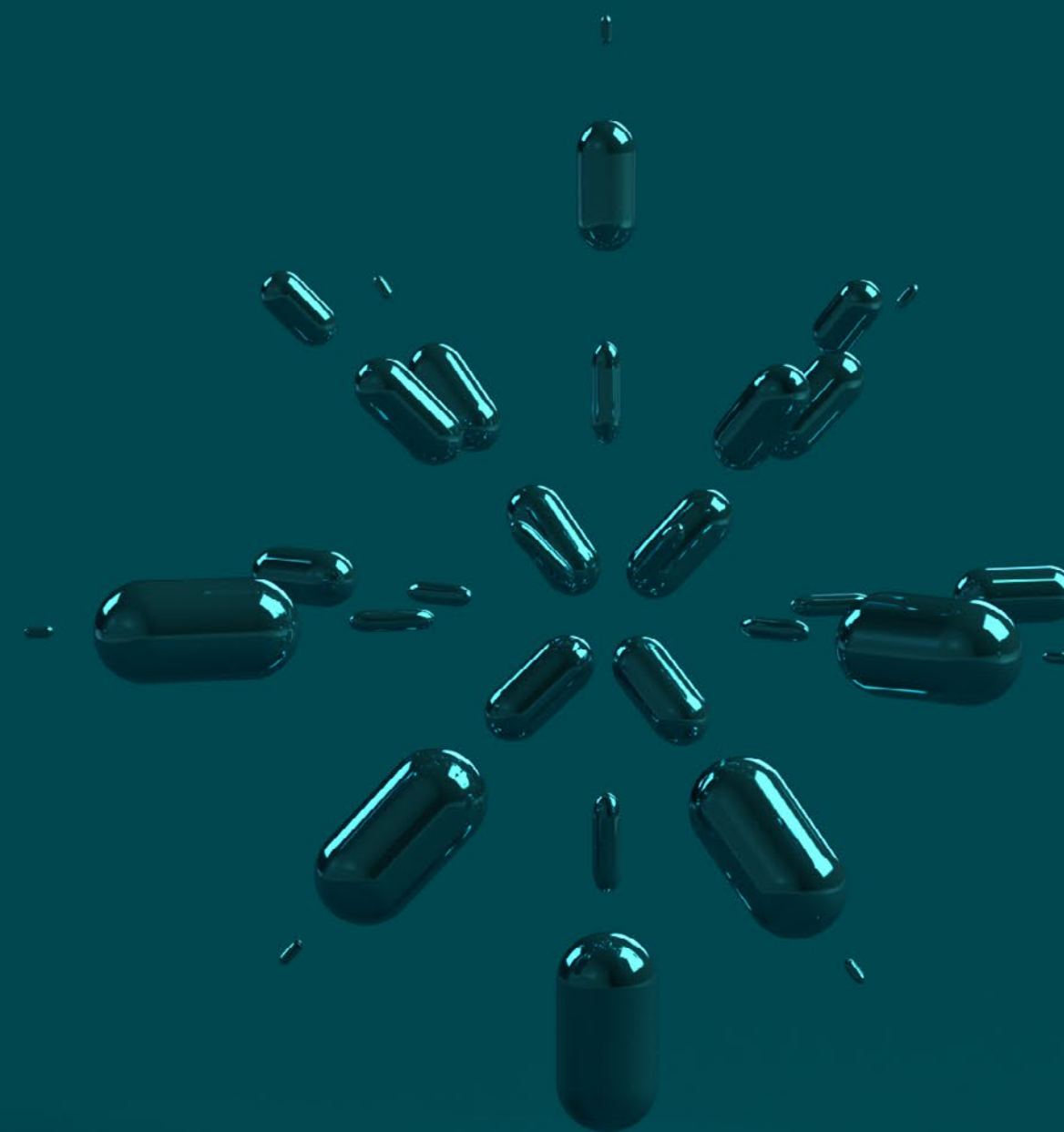


Founders District



The background is a solid dark teal color. It is decorated with numerous organic, pill-shaped or blob-like forms in a lighter, muted green color. These shapes are scattered across the frame, some overlapping each other, creating a sense of depth and movement. The overall aesthetic is modern and clean.

The centre of invention

To succeed in a rapidly evolving world, you need a breeding ground for innovation. You need the best infrastructure, inspiring amenities for your staff and access to a top research university. Founders District gives you that and more. Join its community of creators: industrious companies intent on changing the world.

p.4

Neighbours
on your wavelength

p. 6

**Academic
brilliance**
you can borrow

p. 8

New outdoor
**meeting
pods**

p. 10

House your reputation with
**61,000+
sq. ft.**

p. 11

**A warm
reception**
for lightbulb moments

p. 12

Your gateway to
**new
experiences**

p. 13

A new coffee
culture is
brewing

p. 14

Embrace the
**local
lifestyle**

p. 18

In it for
**the
sport**

p. 21

Tour de
Dublin

p. 22

Two new
shower pavilions

p. 23

Southsiders
in motion

p. 25

Smarter
layouts

Flutter
Entertainment
Headquarters

Made for collaboration

Founders District is the nucleus of research and collaboration, giving you more opportunities to build working relationships with companies on your wavelength.

Flutter
Entertainment plc

skillsoft



fiserv.

lifescientific
FIRST TO MARKET



Work

among

innov-

ators



Expand your business circle and connect with global companies within life sciences, medtech, pharma, professional services and financial technology. Take your place among the most influential brands in business opening new headquarters here in Dublin 4.

Professional chemistry

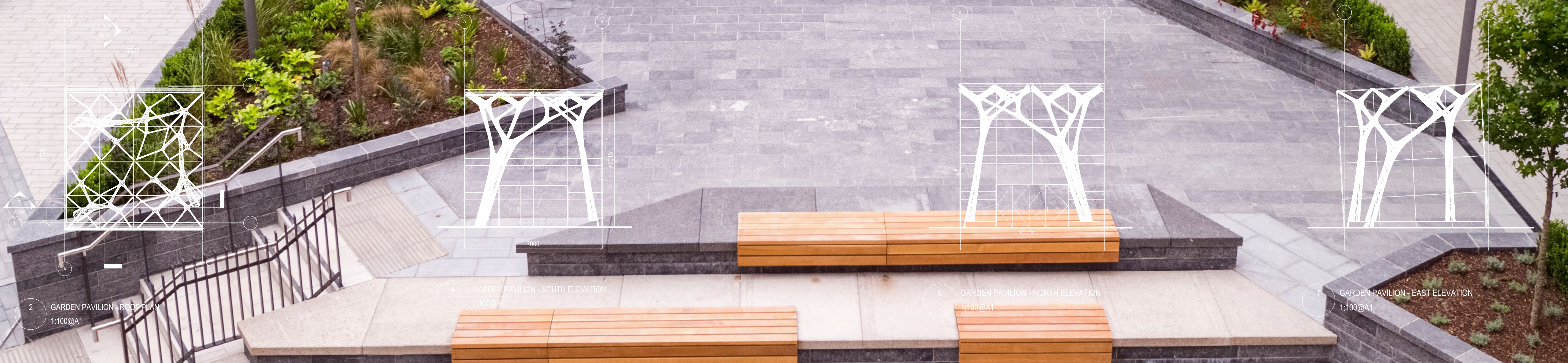
Partner up with influential researchers at UCD to gain that essential edge. With a walkway linking Founders District to a university ranked in the top one per cent worldwide, finding great recruits or strategic alliances is a stroll away.



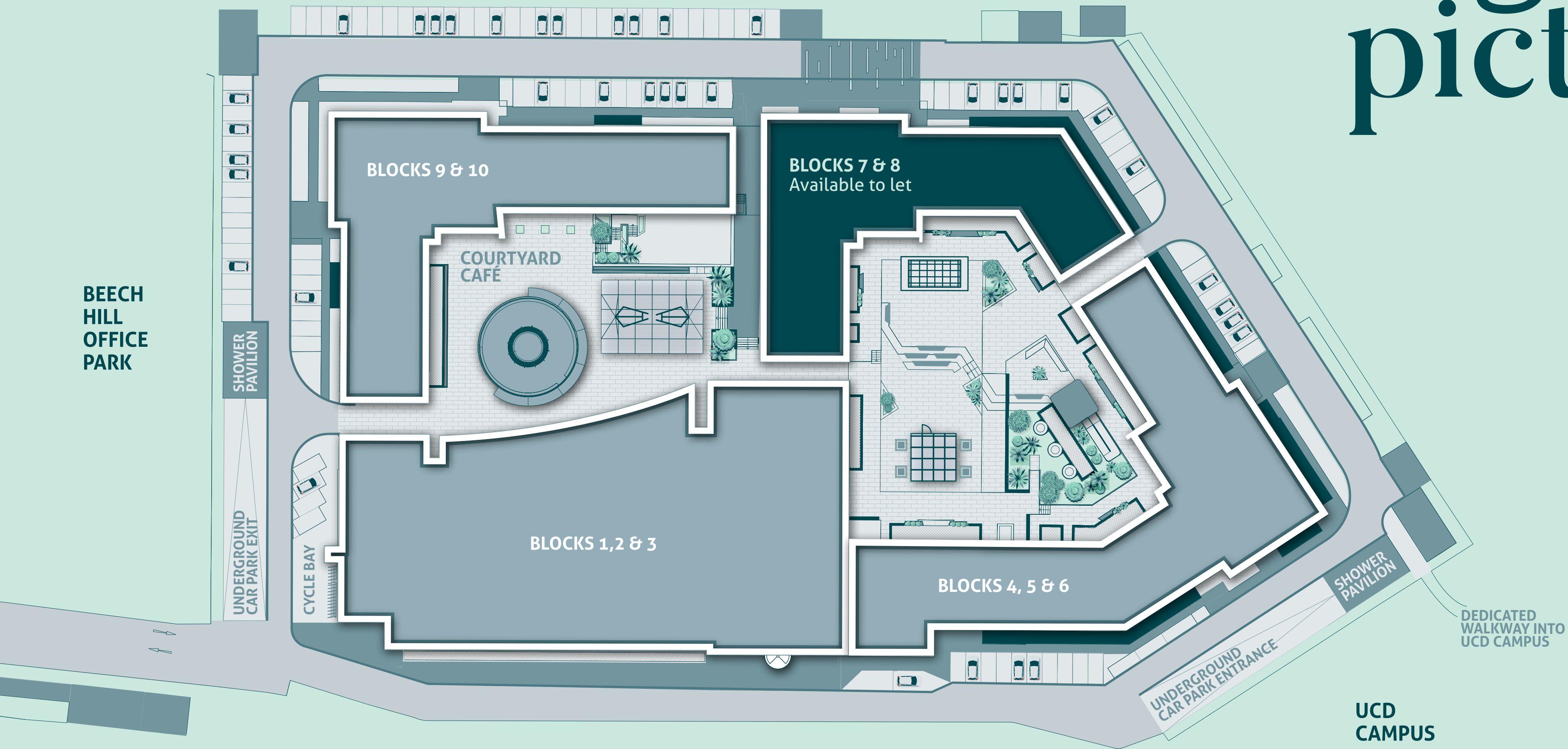
Scientific inquiry broadens horizons. With a growing life sciences community at Founders District and world-class technical and scientific facilities next door at UCD, put your business under the microscope and realise new markets.

Stimulate creativity with outdoor meeting pods that help your team put their heads together beyond the office. Perfect for companies that prefer exploring ideas in the great outdoors.

Blue sky thinking



Big picture



Blocks 1, 2 & 3
Flutter Entertainment plc

Blocks 4, 5 & 6
AIB Merchant Services
Fiserv
Life Scientific
NSSO
Workplace Options
Skillsoft

Blocks 7 & 8
Available to let

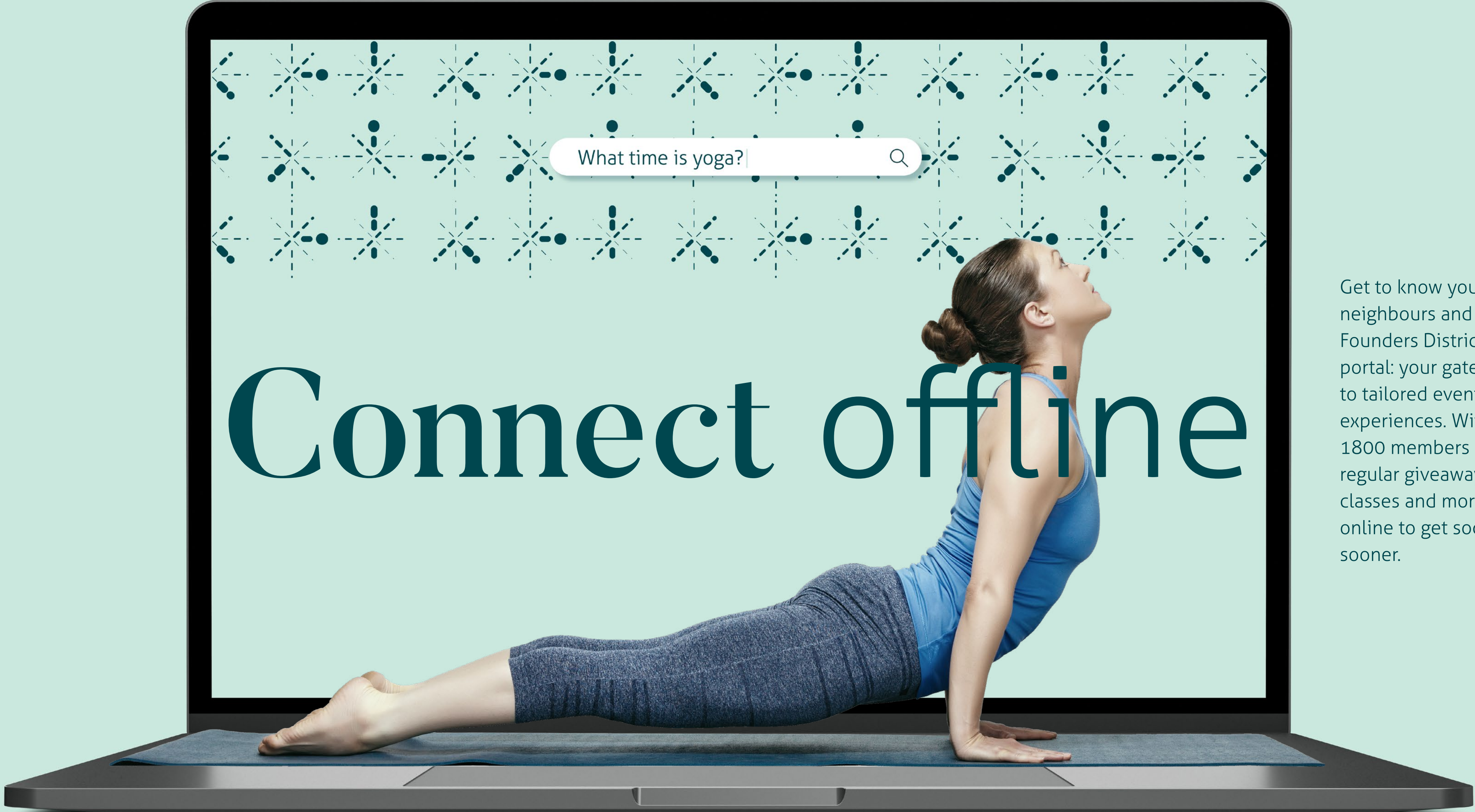
Blocks 9 & 10
NexusUCD
CeADAR
Corlytics
DOCOsoft
Eagle Point Partners
ResMed
TestReach

Office goals

Blocks 7 and 8 offer five spacious office floors totaling 61,914 sq. ft. that create a comfortable work environment. Take on the world in style with flexible interiors designed to support and inspire your talent.

Enlighten minds

Newly redesigned, the glazed double height reception of Blocks 7 and 8 captures the daylight, giving your people plenty of natural light. With two new lounges and two meeting areas complete with pendant lighting, your team will never be far from a lightbulb moment.



Get to know your neighbours and join the Founders District community portal: your gateway to tailored events and experiences. With almost 1800 members enjoying regular giveaways, fitness classes and more, sign up online to get socialising sooner.



Experience a new coffee culture under the canopy of the courtyard café at Founders District. Ideal for informal meetings, this sets a welcoming tone with skilled baristas waiting to pour you the perfect cup.





Dodder Park

The 105 Café, Clonskeagh



Donnybrook Fair, Donnybrook



Cycle friendly location





The Devin, Ranelagh



Farmer Browns, Clonskeagh



Platinum Pilates, Clonskeagh

Host, Ranelagh



Ashtons, Clonskeagh



A great location in the capital for business and entertainment, Dublin 4 brings you great restaurants, sports grounds, bars and parks aplenty. Enjoy brunch in Ranelagh or Clonskeagh, leave it all on the pitch at UCD and spot the wildlife with a walk along the Dodder.



Ranelagh Streetscape



Layla's, The Devlin, Ranelagh



UCD Campus



Layla's, The Devlin, Ranelagh

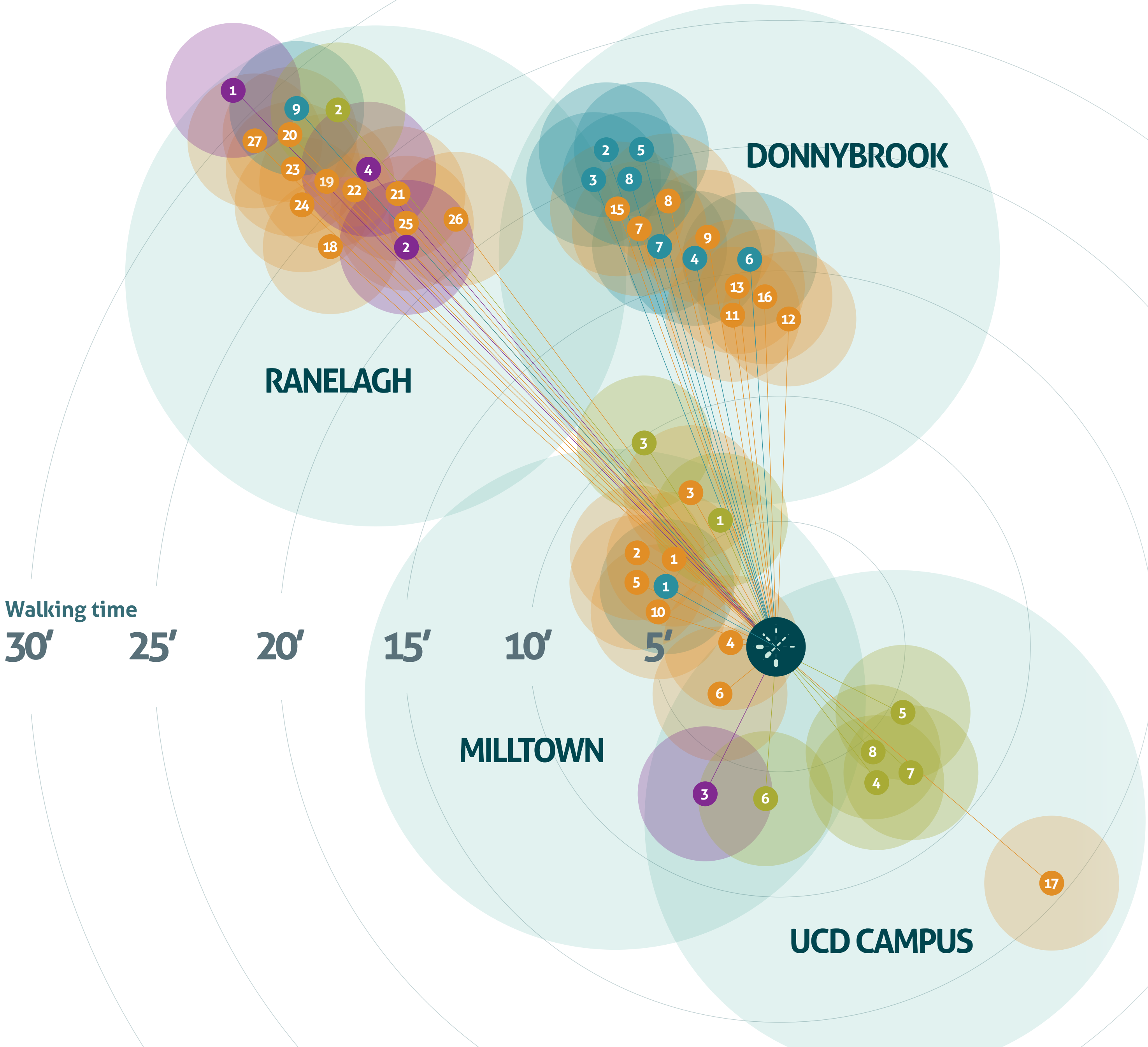


UCD Campus



UCD Campus

Local lifestyle



Cafés, Pubs & Restaurants

- 1. The 105 Café
- 2. Applegreen
- 3. Ashtons Gastro Pub
- 4. Berman & Wallace
- 5. Farmer Browns
- 6. Earl’s Deli
- 7. Marco Pierre White Courtyard Bar & Grill
- 8. The Donnybrook Gastro Pub
- 9. Mulberry Gardens
- 10. Bombay Pantry
- 11. Mao
- 12. Caffè Nero
- 13. Arthur Mayne’s
- 14. Green Beards
- 15. Nourish
- 16. Insomnia
- 17. Bluebird Coffee Roasters
- 18. The Devlin Hotel
- 19. The Butcher Grill
- 20. Host
- 21. Dime Coffee
- 22. Cinnamon
- 23. Dillinger’s
- 24. Butlers Chocolate Café
- 25. Layla’s
- 26. Birchalls
- 27. The Exchequer Wine Bar

Shopping & Groceries

- 1. Applegreen
- 2. Boots
- 3. Donnybrook Fair
- 4. Lloyds Pharmacy
- 5. The Butler’s Pantry
- 6. O’Briens Off License
- 7. Tesco Express
- 8. Terroirs Wine Store
- 9. Super Valu

Services

- 1. The Grafton Barber
- 2. OSLO
- 3. AIB Bank
- 4. Bank of Ireland

Health & Fitness

- 1. David Lloyd Gym
- 2. FlyeFit
- 3. Platinum Pilates & Physiotherapy
- 4. UCD Sports Centre, Gym & Swimming Pool
- 5. UCD Tennis Courts
- 6. UCD Running Track
- 7. UCD Squash Courts
- 8. UCD Handball & Racquetball Courts

50m of endurance

Increase your stamina with an Olympic-size swimming pool. Located on UCD campus, it offers you 10 lanes in which to test yourself. If you run out of steam, hit the steam room, before unwinding in the jacuzzi or sauna.

Race ahead

Give yourself the best start every morning with acres of parkland on your doorstep. Go for a run along the banks of the River Dodder or discover one of five walks that you can take throughout the UCD campus.

Grab your racket and leave it all on the tennis court. Or let your people show you what they're made of with a 30-foot climbing wall. If they can rise to the challenge, then maybe a choice of 140 fitness classes will test their limits. Just some of the many sports you can enjoy around Founders District.



Networth

New revo- luti- ons






Minding your health is no sweat. With new bike paths designed to promote a cycling culture, taking your wellbeing in the right direction is easy. Got no wheels? Rent a bike at short notice with Bleeperbike stations near your office.

Power on

Two new shower pavilions with 50 showers, not to mention 60 lockers with changing areas mean once your workout is done, you get on with your day. Conscious of the need for Covid-19 precautions, internal pavilion and locker doors have an antimicrobial finish while your personal RFID card will open your locker.

Hair drying facilities in some cubicles together with a drying room in each pavilion give fitness enthusiasts plenty of room to get ready. With a mirror, basin and stool neatly positioned nearby, you can inspire a new office dress code effortlessly.

	Showers	50
	Drying rooms	2
	Lockers	60



Going your way

Sail around town with 22 bus routes on your doorstep including express services that travel north and south of the city. With the Luas nearby at Milltown station and a shuttle bus to Sydney Parade Dart station, you can come and go as you please.

Cruise into town

Drive times

Ballsbridge	7 mins
Dundrum Shopping Centre	8 mins
St. Stephen's Green	13 mins
Dublin Airport	30 mins

Walk times

UCD Campus	1 min
Clonskeagh	5 mins
Dodder Valley Park	5 mins
Bleperbike Station	8 mins
Donnybrook	13 mins

Cycling times

Donnybrook	3 mins
Herbert Park	6 mins
Ballsbridge	7 mins
Ranelagh	9 mins
City Centre	14 mins
Milltown Luas	10 mins



Perfect arrangement

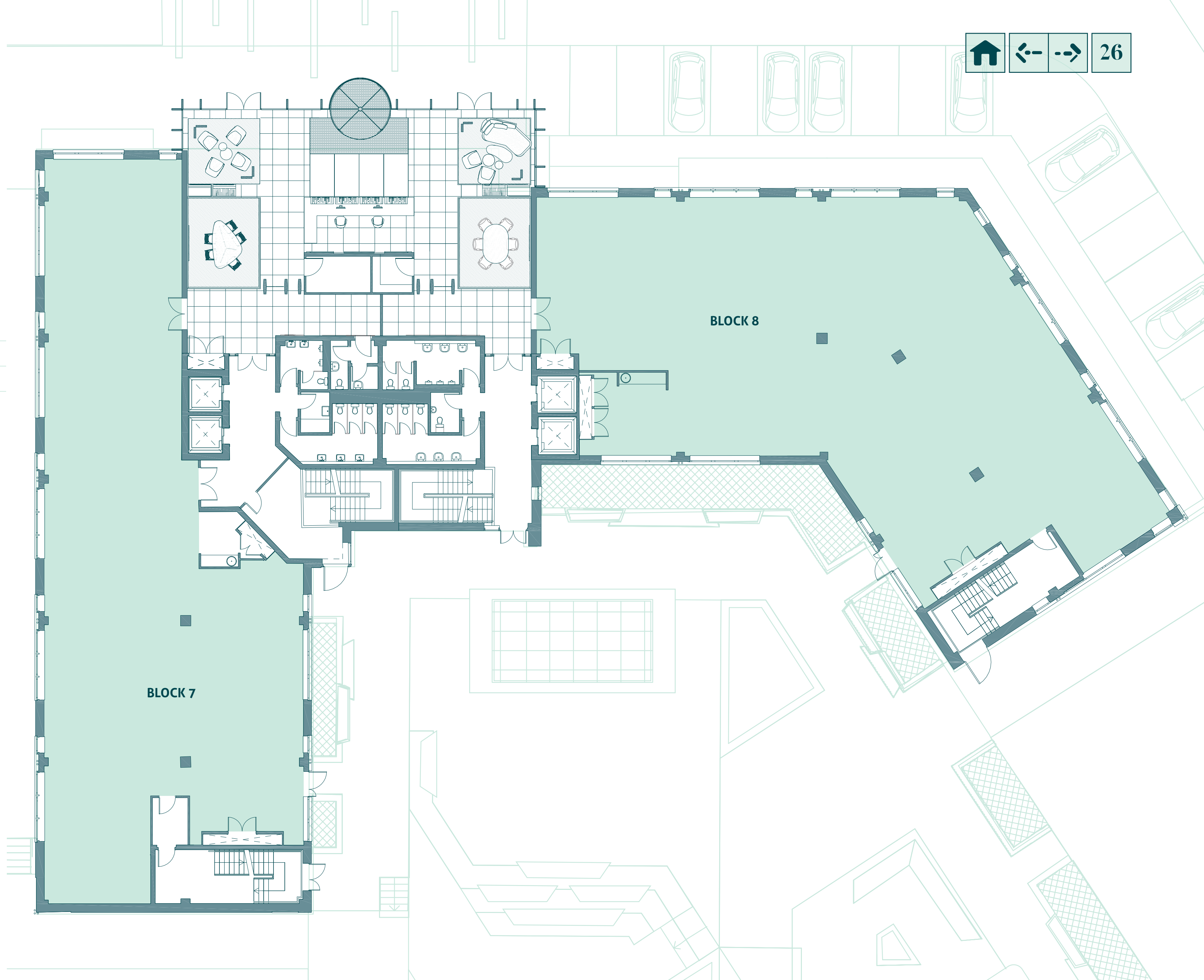
Pave the way forward for your people with flexible floorplates that can be aligned to suit new styles of working. You deserve office space that works as smart as you do.



	Block 7 (GIA)		Block 8 (GIA)		Total area (GIA)	
	SQ. M	SQ. FT	SQ. M	SQ. FT	SQ. M	SQ. FT
Reception	-	-	-	-	212	2,282
Ground	513	5,522	477	5,134	990	10,656
First	595	6,405	537	5,780	1,132	12,185
Second	605	6,512	548	5,899	1,153	12,411
Third	605	6,512	548	5,899	1,153	12,411
Fourth	591	6,361	521	5,608	1,112	11,969
Total	2,909	31,312	2,631	28,320	5,752	61,914

Ground Floor

Block 7		Block 8		Total area		Reception	
SQ. M	SQ. FT	SQ. M	SQ. FT	SQ. M	SQ. FT	SQ. M	SQ. FT
513	5,522	477	5,134	990	10,656	212	2,282

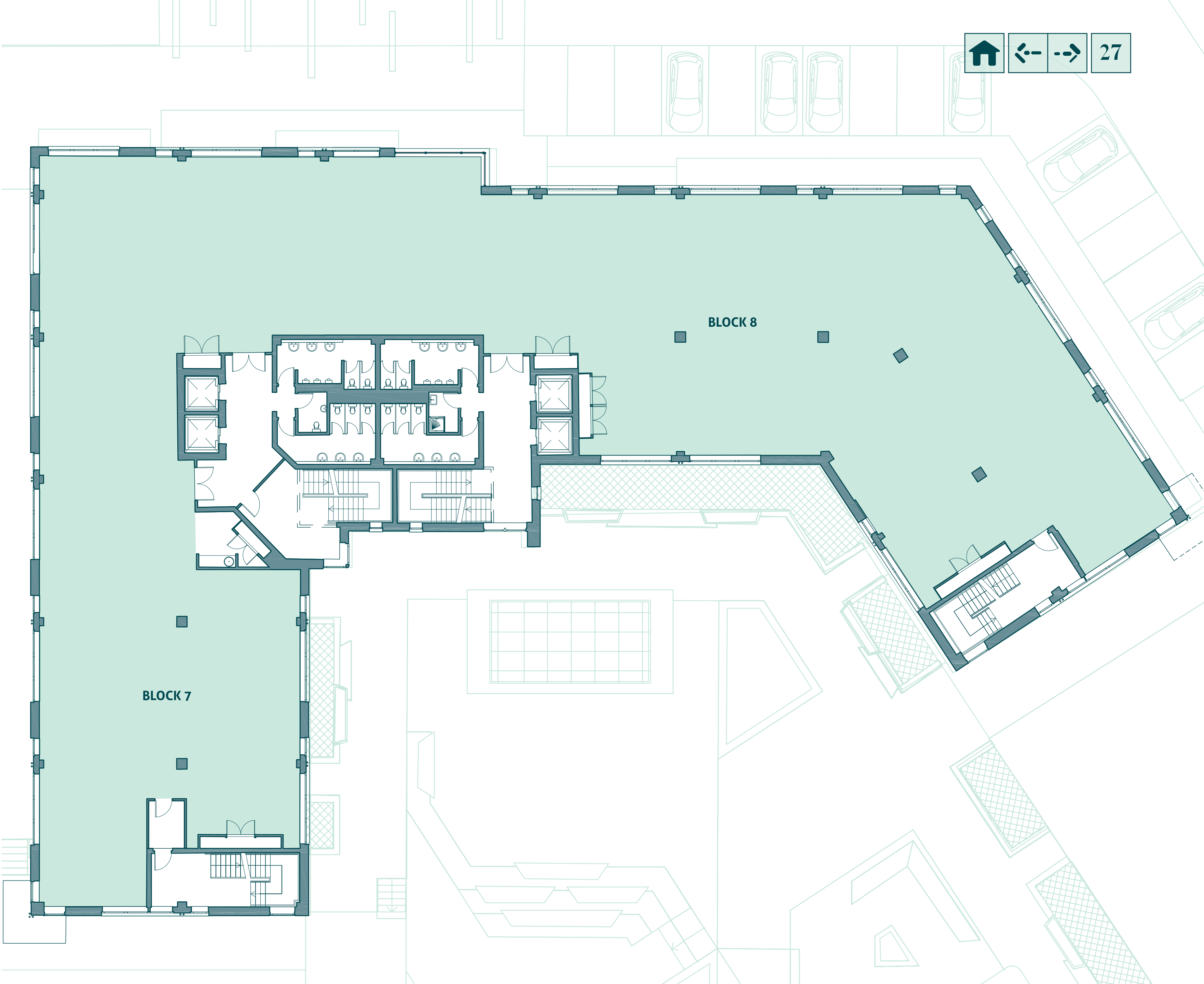


Floorplans not to scale. For indicative purposes only.

Typical Floor

Single tenancy

Block 7		Block 8		Total area	
SQ. M	SQ. FT	SQ. M	SQ. FT	SQ. M	SQ. FT
605	6,512	548	5,899	1,153	12,411

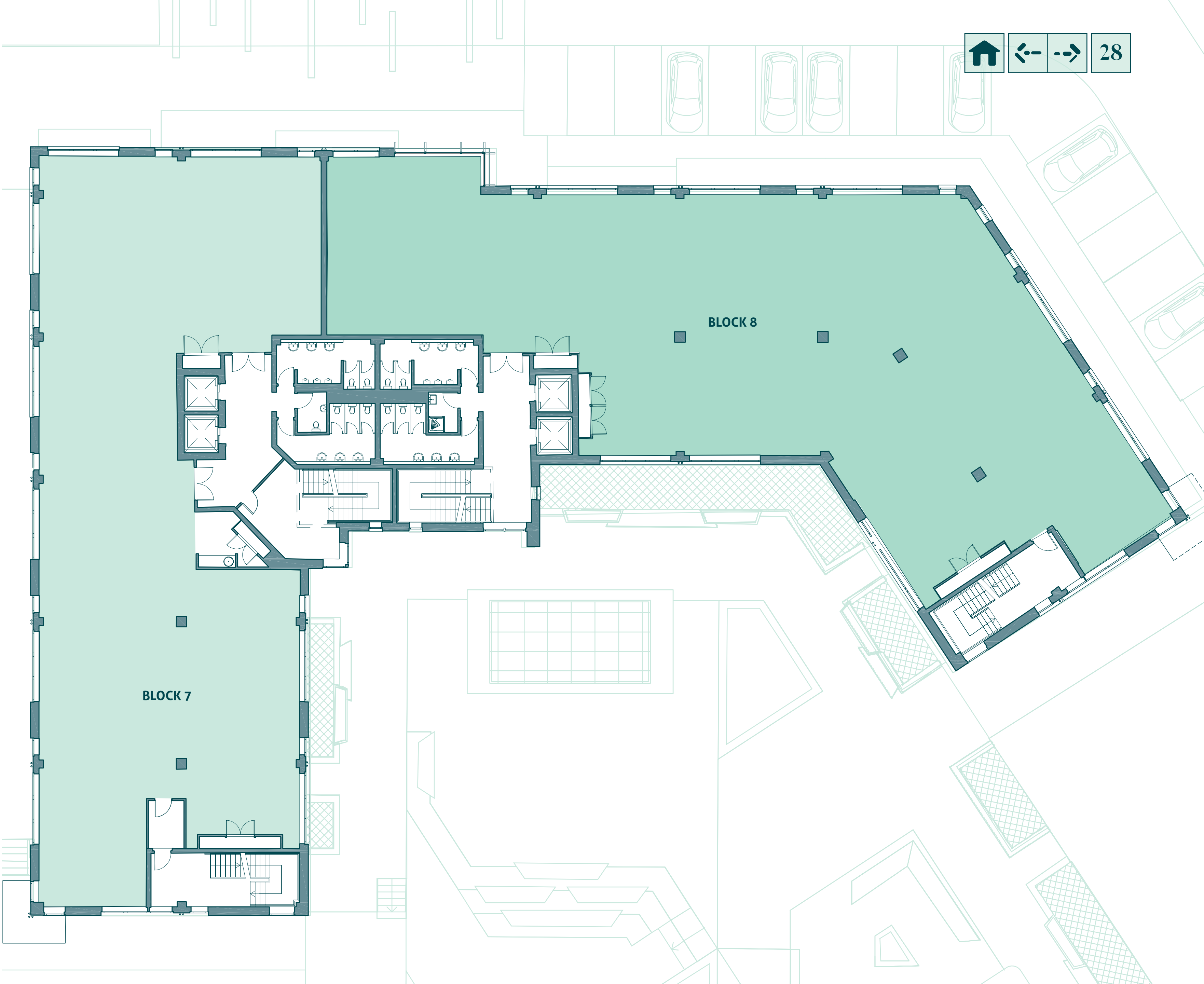


Floorplans not to scale. For indicative purposes only.

Typical Floor

Multiple tenancy

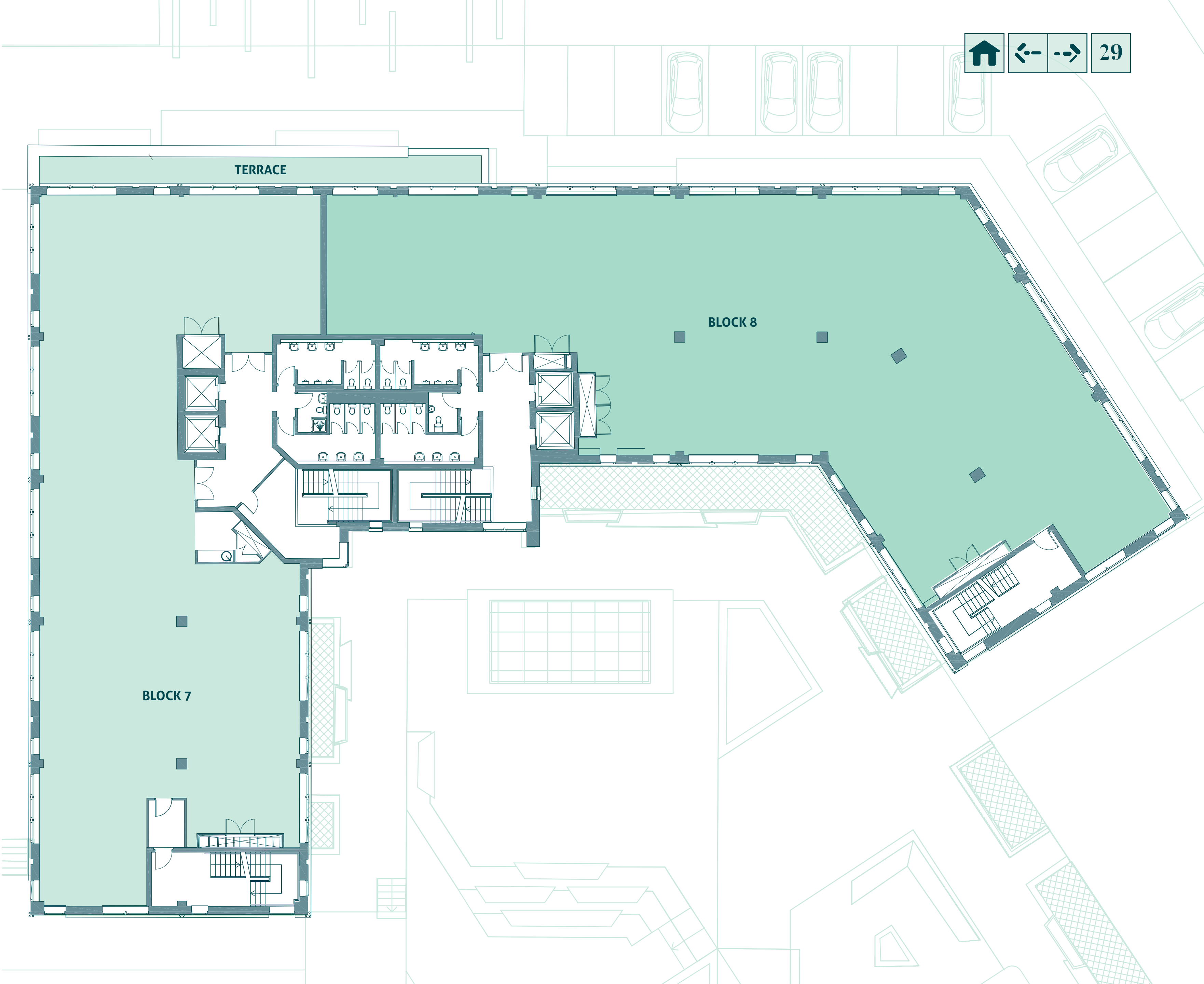
Block 7		Block 8		Total area	
SQ. M	SQ. FT	SQ. M	SQ. FT	SQ. M	SQ. FT
605	6,512	548	5,899	1,153	12,411



Fourth Floor

Multiple tenancy

Block 7		Block 8		Total area	
SQ. M	SQ. FT	SQ. M	SQ. FT	SQ. M	SQ. FT
591	6,361	521	5,608	1,112	11,969



Floorplans not to scale. For indicative purposes only.

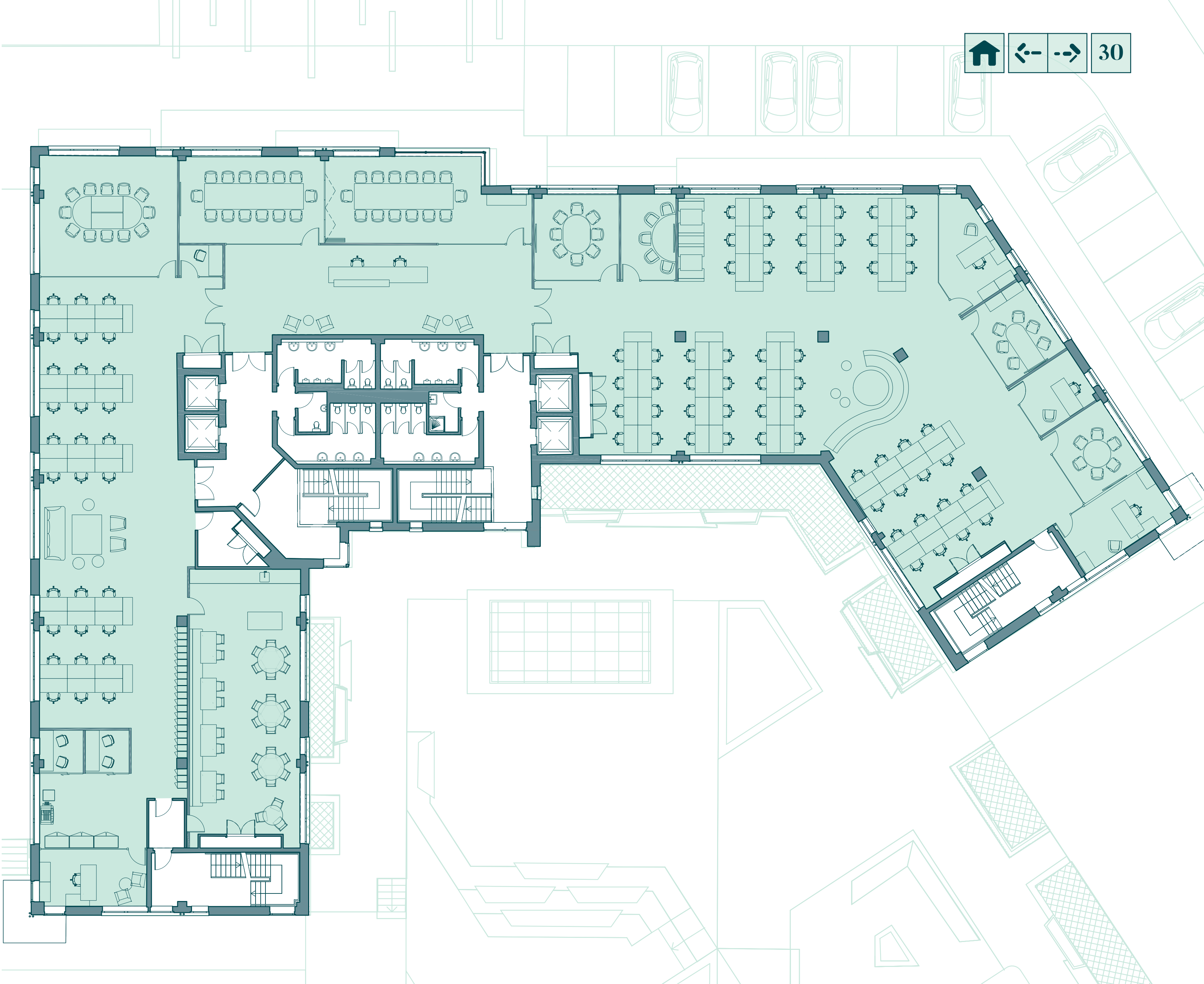
Typical Floor

Test layout 1:10 sq.m

Workstation	88
Executive offices	4
Large meeting rooms	3
Small meeting rooms	4
Breakout areas	2
Collaborative spaces	1
Phone booth	1
Reception lounge	1
Kitchen	1
Printer stations	1
Docu hubs	2
Lockers	92



Floorplans not to scale. For indicative purposes only.



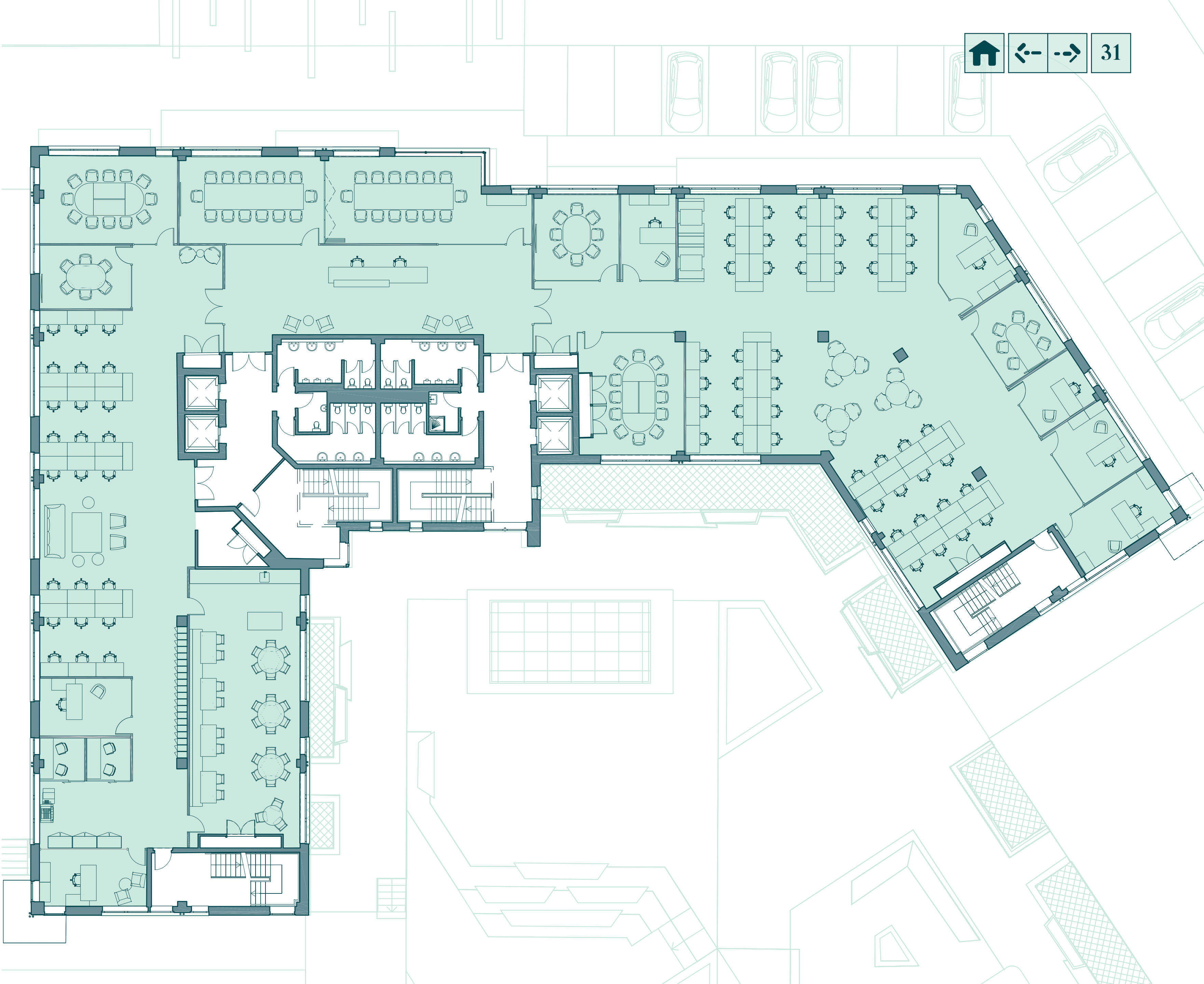
Typical Floor

Test layout 1:12 sq.m

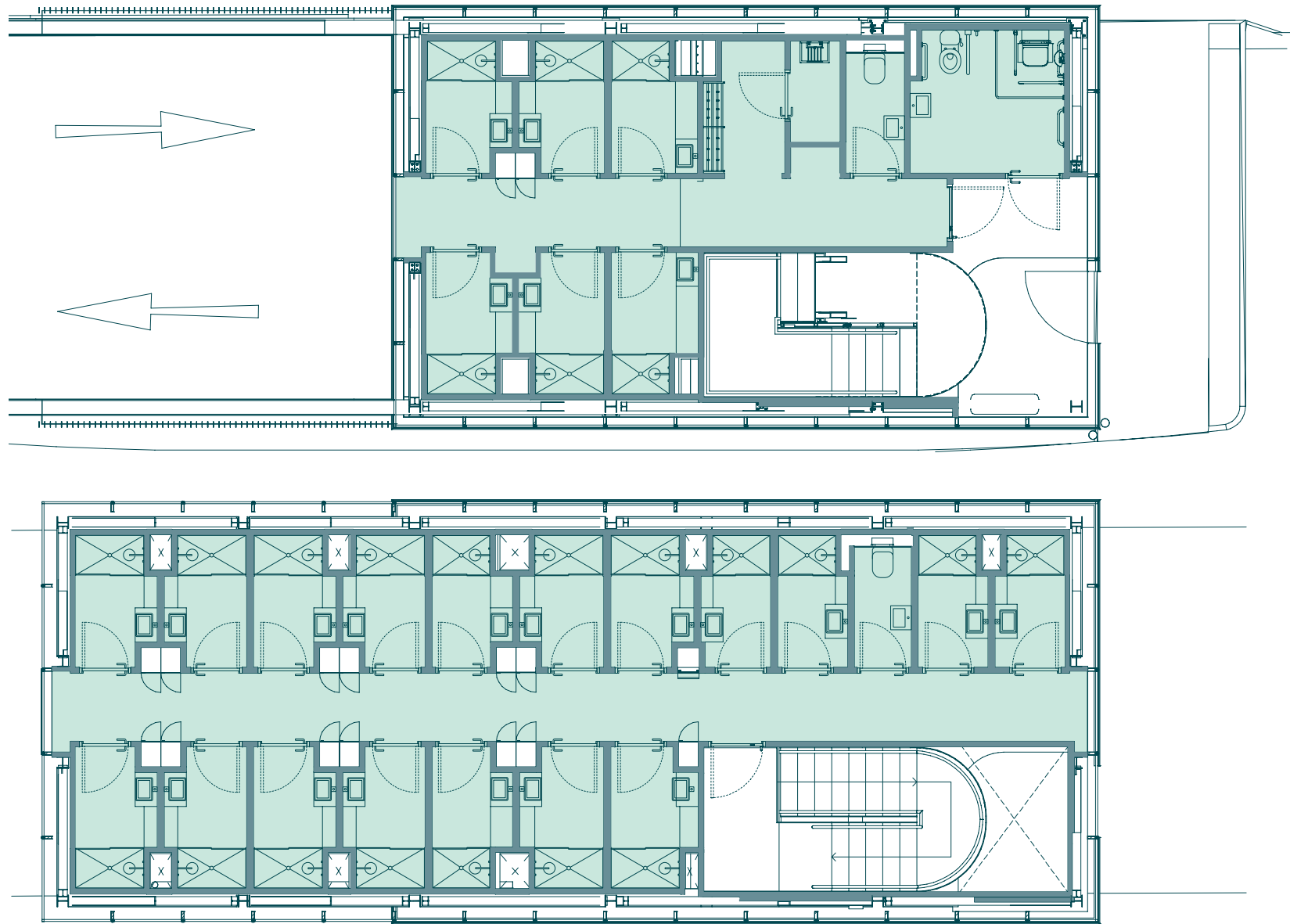
Workstation	70
Executive offices	7
Large meeting rooms	5
Small meeting rooms	3
Breakout areas	3
Collaborative spaces	1
Phone booth	2
Reception lounge	1
Kitchen	1
Printer stations	1
Docu hubs	2
Lockers	80



Floorplans not to scale. For indicative purposes only.



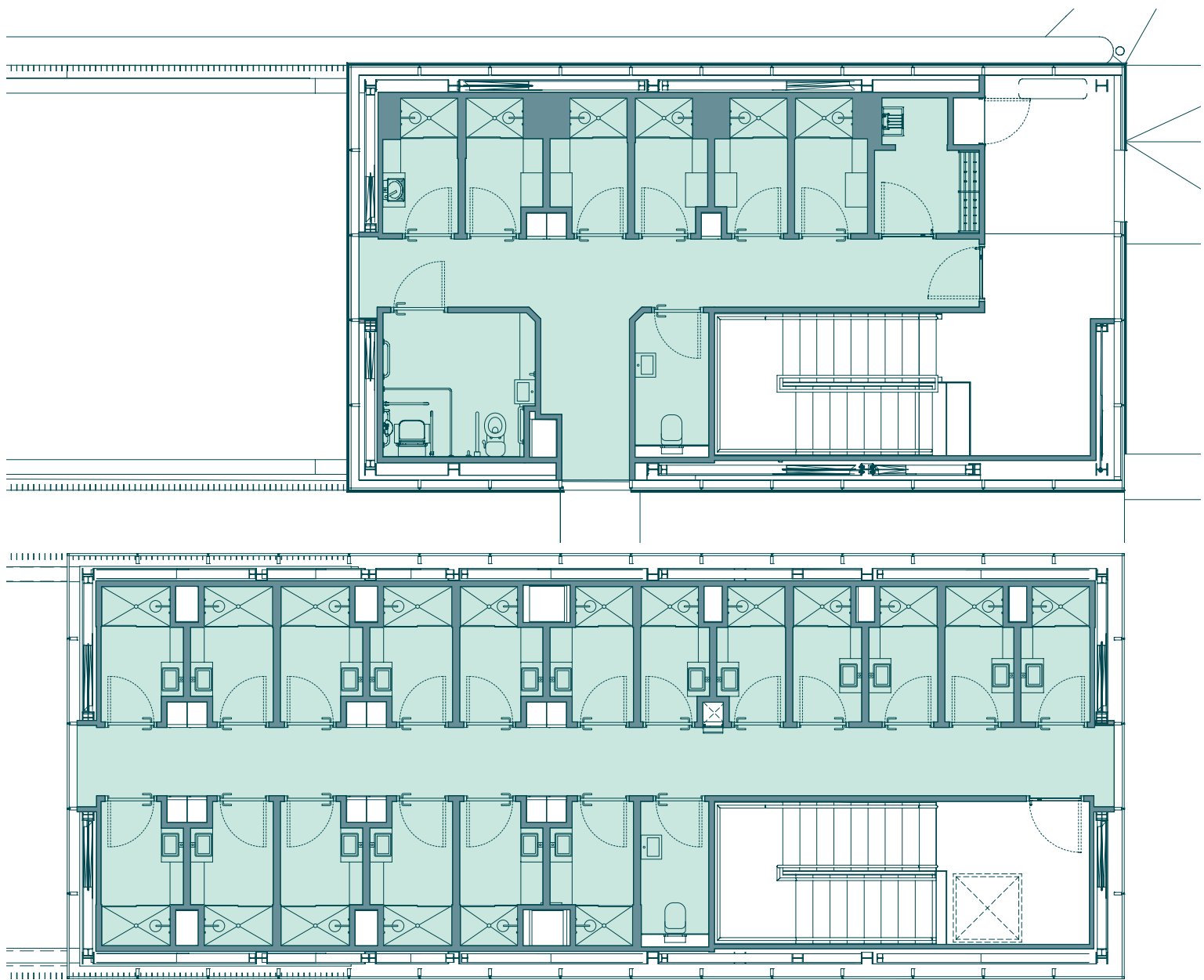
Shower pavilions



Pavilion A

Shower, changing cubicle & vanity suite*	25
Drying room	1
Lockers	30
WC	3

*1 is accessible. 6 are equipped with a hairdryer.



Pavilion B

Shower, changing cubicle & vanity suite*	25
Drying room	1
Lockers	30
WC	3

*1 is accessible. 6 are equipped with a hairdryer.



Floorplans not to scale. For indicative purposes only.

Speci- fication

- Newly designed double height reception
- Office floor-to-ceiling height is 2.7m
- Air conditioning and heating is via a 4-pipe fan coil system
- Anodised curtain walling façade
- The occupational density is based on one person per 10 sq. m. The cooling load is to be based on a density of one person per 10 sq. m of the floor area
- Office floors feature a carpet, medium grade raised access flooring and metal tile ceiling with plastered and painted walls
- High quality toilet facilities on all floors
- The slab-to-slab office floor height is 3.67m with 150mm raised access floors, 300mm floor slab and 450mm ceiling void
- Office floor lighting system is 600 x 600mm dimmable LED modules in the suspended ceiling. These luminaires will be fitted with a louvre for use with VDU screens and will be designed to maintain 500 lux. A lighting control system will be included in the design incorporating presence sensors and an ability to save energy when daylight is available
- Four 13-person Kone passenger lifts (with speed 1.6m/s) to ensure smooth circulation to all floors
- Two new purpose-built shower block pavilions with easy access from the shared basement include 50 showers and associated changing and drying areas and 60 lockers. Each pavilion is secure with electronic access
- Secure surface and underground car parking



Team

Owner & Landlord
Spear Street Capital

Architect
MDO

Landscape Architect
Cunnane Stratton Reynolds
Land Planning & Design

Brand & Design
Originate

Architectural Visualization
Digital Dimensions

DISCLAIMER: The particulars and information contained in this brochure are issued by Jones Lang LaSalle and Lisney on the understanding that all the negotiations are conducted through them. Whilst every care has been taken in the preparation of the particulars and information they do not constitute an invitation to treat, an offer or a contract of any nature whether express or implied. All descriptions, dimensions, maps, plans, artists' impressions, references to condition, permissions or licences of use or occupation, access and other details are for guidance only and may be subject to change, without prior notification. The particulars and information are given in good faith but no intending purchaser/ tenant should rely on them as statements or representations of fact and is specifically advised to undertake its own due diligence (at its own expense) to satisfy itself as to the accuracy and/or correctness of the particulars and information given. None of Jones Lang LaSalle or Lisney, their employees, agents or affiliate companies, makes any warranty or representations whether express or implied with respect to the particulars and/or information and which are to the fullest extent permitted by law, disclaimed; furthermore, such parties accept no liability in respect of any loss suffered by any intending purchaser/tenant or any third party arising out of the particulars or information. Prices are quoted exclusive of applicable taxes such as VAT (unless otherwise stated) and all negotiations are conducted on the basis that the purchaser/lessee shall be liable for any applicable taxes or VAT arising out of the transaction.

Agents

Contact our joint letting
agents for office enquiries

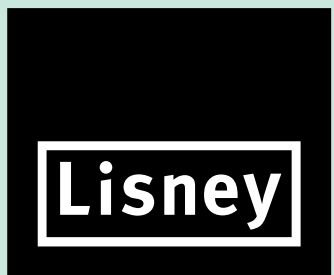


Deirdre Costello
deirdre.costello@eu.jll.com
+353 1 673 1600

Rita Carney
rita.carney@eu.jll.com
+353 1 673 1685

Conor Fitzpatrick
conor.fitzpatrick@eu.jll.com
+353 1 477 9714

Jll.ie

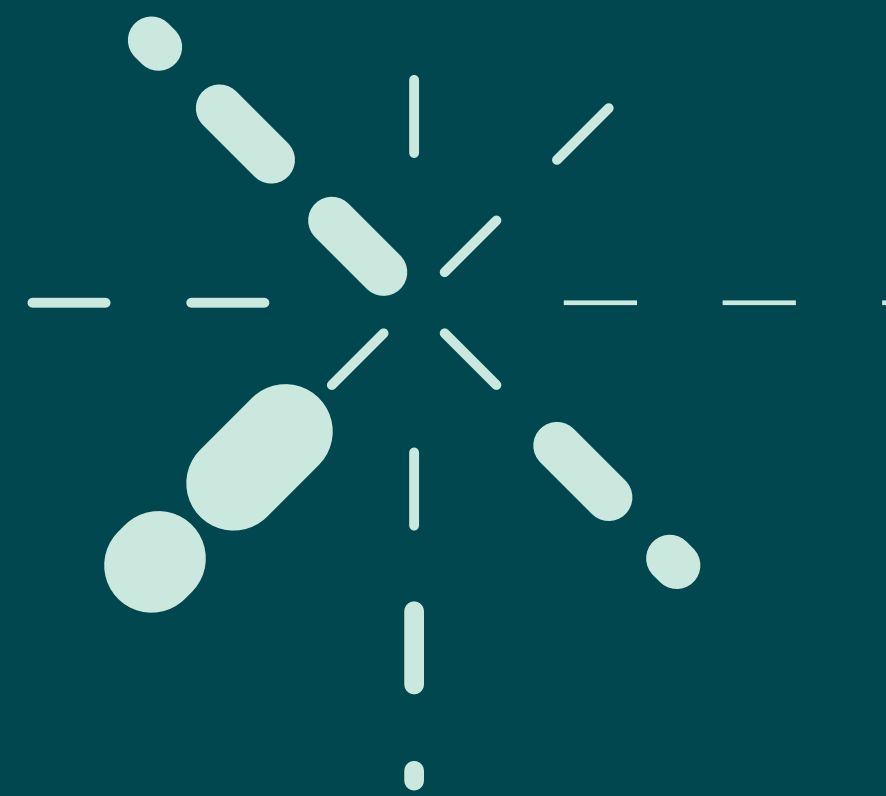


James Nugent
jnugent@lisney.com
+353 1 638 2742

Paul Hipwell
phipwell@lisney.com
+353 1 638 2732

Deborah Mahon
dmahon@lisney.com
+353 1 638 2793

Lisney.com



foundersdistrict.ie