

LEGEND:

NOTE: LEVELS WILL VARY ACCORDING TO HOUSE POSITION

NOTE: REFER TO SITE LAYOUT PLAN FOR DETAILS OF FINISHED FLOOR LEVELS.

NOTE: PROPOSED LEVELS SHOWN AS ± 00.00

NOTE: EXISTING SPOT LEVELS SHOWN AS ± 264

NOTE: NORTH POINT VARIES SLIGHTLY FOR EACH UNIT. REFER TO SITE PLAN DWG NO. 2016192-PL-110 FOR CLARIFICATION ON RELEVANT POSITION.

NOTE: PROPOSED 100mm \varnothing WAIN SURFACE WATER DRAINAGE RUN LAID TO FALLS TO EXISTING PUBLIC SURFACE WATER DRAINS SHOWN AS

NOTE: PROPOSED SURFACE WATER MANHOLE SHOWN AS

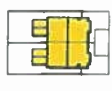
NOTE: PROPOSED 100mm \varnothing WAIN FOUL WATER DRAINAGE RUN LAID TO FALLS TO EXISTING PUBLIC FOUL WATER DRAINS SHOWN AS

NOTE: PROPOSED FOUL WATER MANHOLE SHOWN AS

NOTE: ALL TOILET / EN-SUITE WINDOWS TO HAVE OBTURSCURED GLAZING

NOTE: ALTERATIONS TO HOUSE TO BE SHOWN AS

UNIT INDICATED ON SITE PLAN DWG NO. PL-110 AS SHOWN =



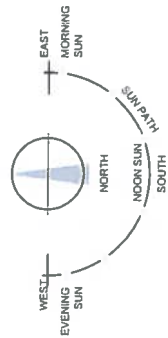
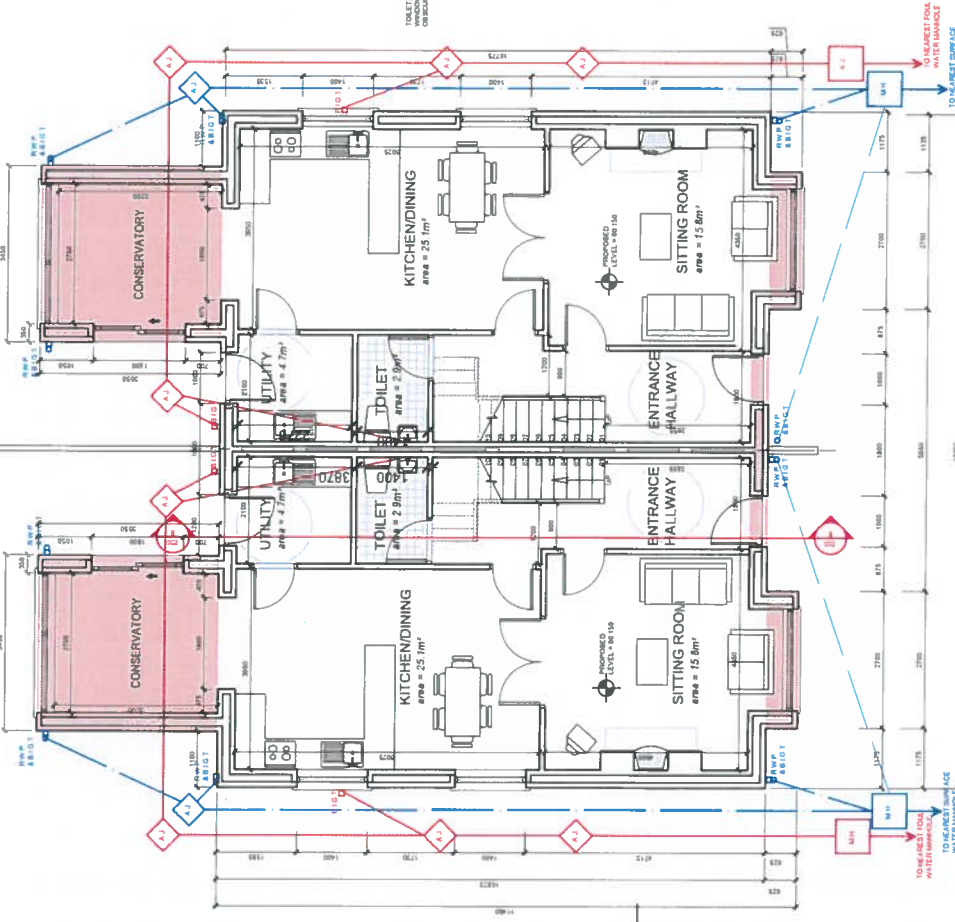
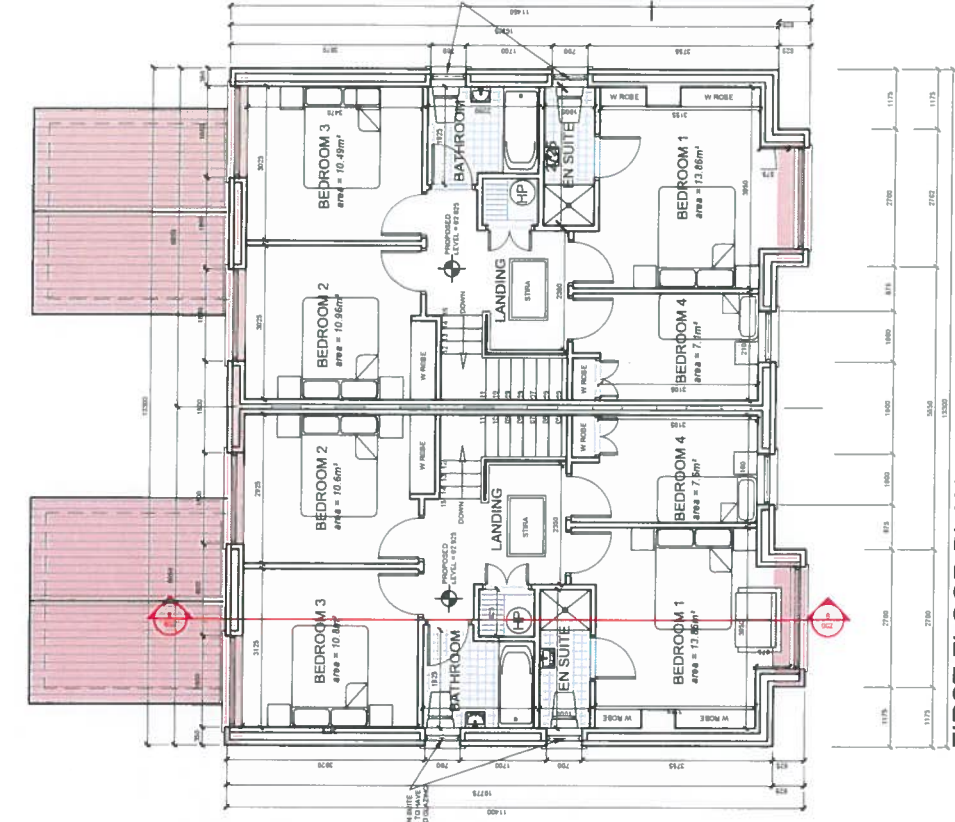
C.J. Falconer & Associates
Chartered Architects & Planning Consultants

St Patrick's House, Newtown Waterford, Ireland
+353 (0)81 873444 +353 (0)81 873474

PLANNING PERMISSION

HOUSE DEVELOPMENT AT CLONAFIELD, AMERYSCOE, DUNGARVAN
HOUSE TYPE B - 4 BED SEMI-DETACHED
PLANS PROPOSED

2016192 PL-221



HOUSE TYPE B - 4-BED SEMI-DETACHED
TOTAL FLOOR AREA = 132.7 m² (1428.4 sq. ft.)