

# For Sale

Asking Price: €525,000



Jerhs, Kealties, Durrus,  
Co. Cork, P75 R221.

BER C1

[sherryfitz.ie](http://sherryfitz.ie)



'Jerhs' is a distinctive and spacious residence on 0.4 acre approx. of grounds, situated in a commanding position that offers panoramic sea views encompassing Dunmanus Bay and the Mizen Head coastline. The property is set in Kealties, a short drive from the villages of Ahakista and Durrus.

The house is architect designed and is maintained in excellent condition. The building measures just under 2,600 sq. ft. approximately and is laid out in well-designed rooms that take advantage of the excellent sea and countryside views.

The many features of this fine property include bright and spacious rooms with high ceilings, beautiful architrave/paneling finishes, double-glazed windows, oil fired central heating, traditional open fireplace and other character features throughout.

The ground floor accommodation includes entrance porch, hallway, kitchen / dining / living room with a complimentary pantry and side door to the patio area, spacious and bright sitting room with paneled walls and an open fireplace, utility, guest bathroom and exceptionally spacious bedroom. The workshop is accessible from the ground floor bedroom and could easily be adapted into extra living accommodation. Upstairs there are 2 double bedrooms that take advantage of the stunning sea views, both with ensuite bathrooms.

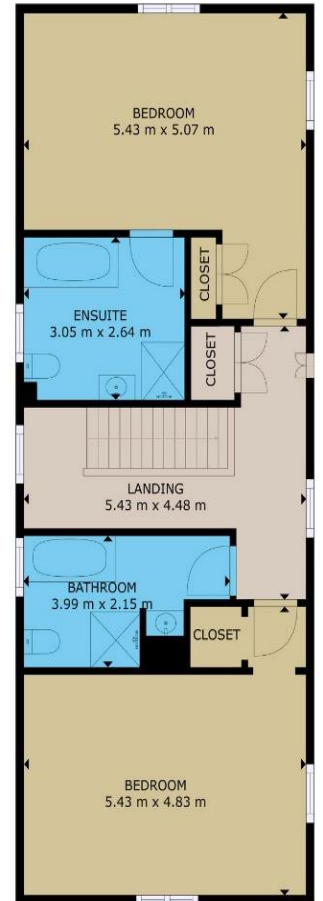
The grounds containing 0.4 acre approx. are laid out in lawns bordered by trees and shrubs and ample carparking. The workshop is a substantial space with double door access.

The Kealties townland is a popular walking location on the Sheep's Head Peninsula, regarded as a mecca for hillwalkers. Bantry town is less than a fifteen minute drive approx. whilst the attractive villages of Ballydehob, Schull, Durrus, Ahakista and Kilcrohane are all in close proximity. Cork City is just over a one hour commute.





GROUND FLOOR



FIRST FLOOR

GROSS INTERNAL AREA

TOTAL : 240.78m<sup>2</sup>

Whilst every attempt has been made to ensure the accuracy of the floor plan contained here, measurements of doors, windows, rooms and any other items are approximate and no responsibility is taken for any error, omission, or misstatement. This plan is for illustrative purposes only and should be used as such by any prospective purchaser.



**NEGOTIATOR**  
Olivia Hanafin  
Sherry FitzGerald O'Neill  
Wolfe Tone Square  
Co Cork  
T: 027 31030  
E: info@sfoneill.ie

**VIEWINGS**  
Strictly By Appointment Only

**ENERGY RATING**  
BER: C1  
Cert No.: 117831305  
EPI: 168.42 kWh/m<sup>2</sup>/yr

[sherryfitz.ie](http://sherryfitz.ie)  
[sfoneill.ie](http://sfoneill.ie)  
[myhome.ie](http://myhome.ie)  
[daft.ie](http://daft.ie)

**CONDITIONS TO BE NOTED:** A full copy of our general brochure conditions can be viewed on our website at <http://www.sherryfitz.ie/terms>, or can be requested from your local Sherry FitzGerald office. We strongly recommend that you familiarise yourself with these general conditions. While care has been taken to ensure that information contained in Sherry FitzGerald publications is correct at the time of publication, changes in circumstances after the time of publication may impact on the accuracy of this. PSRA Registration No. 004158