

# For Sale

Asking Price: €445,000

**Sherry  
FitzGerald**  
O'Neill



Outline for illustration only.  
Not to be relied upon.

Airhill, Schull, Co Cork.

P81 V023

**BER** D2

[sherryfitz.ie](http://sherryfitz.ie)



Attractive 4 bedroom residence enjoying an excellent location, convenient to all that the maritime West Cork town of Schull has to offer. The house is detached with a tarmacadam parking area to the side. It is located adjacent to the town centre, ideal for permanent or holiday living.

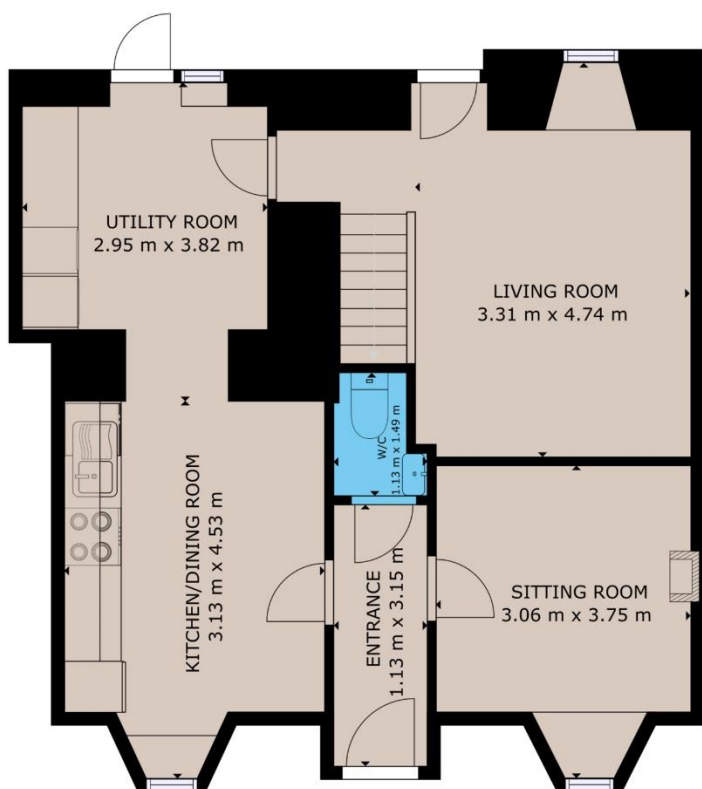
The house has recently been painted internally and externally. Features include oil fired central heating, open fireplace, bright spacious rooms and a parking and patio area to the side.

The accommodation which extends to 115.2 sq. m. / 1240 sq. ft. approx. includes entrance hallway, sitting room, kitchen/dining room, utility, living room and wc on the ground floor. The first floor includes 4 spacious bedrooms and a family bathroom.

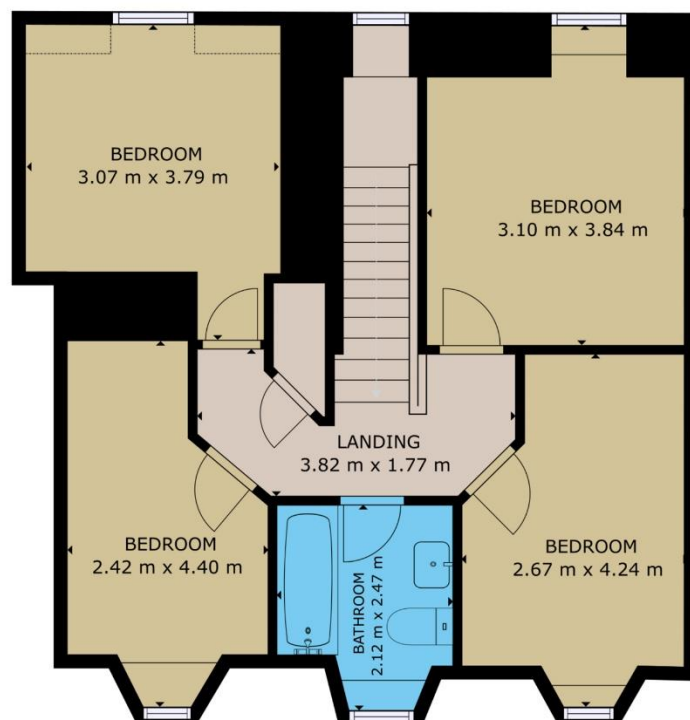
There is off street car parking to the west side and a sunny south facing patio garden area to the rear. The large car park with ample parking for numerous cars or perhaps a boat/rib is a useful addition.

The property is well presented and is close to shops, pubs, restaurants and schools, both primary and secondary. Schull pier and harbour are popular with sailing and water sports enthusiasts. It is rare for a property with extra parking to be available for sale in such a convenient Schull town location and viewing is recommended.





GROUND FLOOR



FIRST FLOOR

GROSS INTERNAL AREA

TOTAL : 115.25m<sup>2</sup>

Whilst every attempt has been made to ensure the accuracy of the floor plan contained here, measurements of doors, windows, rooms and any other items are approximate and no responsibility is taken for any error, omission, or misstatement. This plan is for illustrative purposes only and should be used as such by any prospective purchaser.



#### NEGOTIATOR

Niamh Moloney  
Sherry FitzGerald O'Neill  
37 North Street, Skibbereen,  
Co Cork  
T: 028 21404  
E: info@sfoneill.ie

#### VIEWINGS

Strictly By Appointment Only

#### ENERGY RATING

BER: D2  
Cert No.: 100735901  
EPI: 279.78 kWh/m<sup>2</sup>/yr

sherryfitz.ie  
sfoneill.ie  
myhome.ie  
daft.ie

**CONDITIONS TO BE NOTED:** A full copy of our general brochure conditions can be viewed on our website at <http://www.sherryfitz.ie/terms>, or can be requested from your local Sherry FitzGerald office. We strongly recommend that you familiarise yourself with these general conditions. While care has been taken to ensure that information contained in Sherry FitzGerald publications is correct at the time of publication, changes in circumstances after the time of publication may impact on the accuracy of this. PSRA Registration No. 004158