



Dining Room



River View



Reception Hall



Bathroom



Guest Bedroom



Door leading to Courtyard



Ground Floor Open Plan

For more information contact:

**Matt Fallon**

Property Partners

41A South Mall, Cork City.

Tel: **021-4277877**

Email: **mattfallon@propertypartners.ie**



**ATHDARA**  
LEE ROAD, CORK





# ATHDARA

LEE ROAD, CORK

A rare opportunity to acquire substantial semi-detached residence in this desirable location enjoying scenic views of the river Lee and close to all amenities.

## Description

An impressive Edwardian house of circa 1770 sq ft, built in 1906 and set over three floors, the property has been well maintained throughout the years and retains many of its original features including fireplaces, bay windows and pitch pine floors and staircase.

## Location

Located on the Lee Road close to Sunday's Well, Athdara offers the best of city and country living. Within minutes of many amenities, schools, hospitals, UCC and a short walk to Fitzgeralds Park and the city centre yet Athdara provides easy access to country walks, jogging and cycling routes.

## Features

- Edwardian (1906) four bedroom residence
- Impressive first floor living room overlooking river Lee
- Gracefully proportioned reception rooms
- South-facing back garden offering potential for rear access or development.



Staircase



Second Floor Living Room



Kitchen

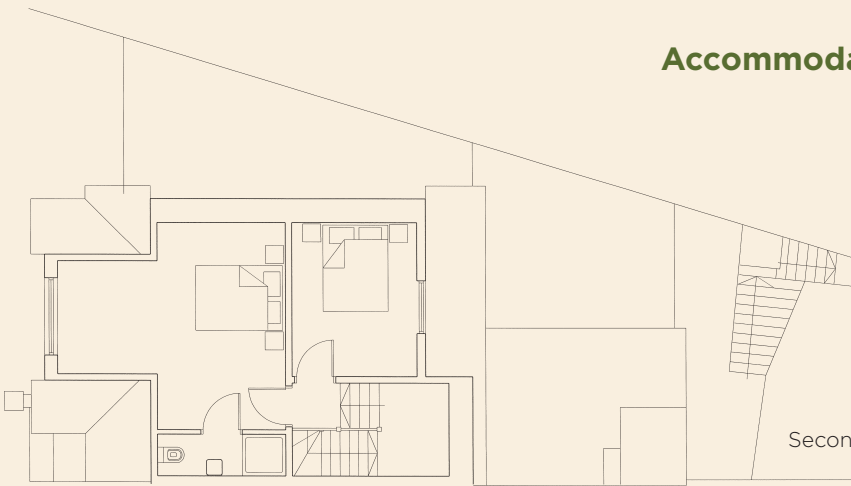


Master Bedroom

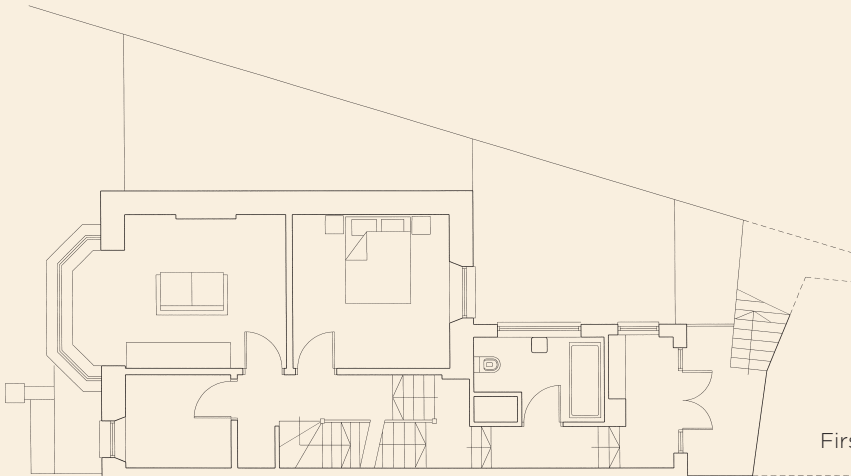


First Floor Sitting Room

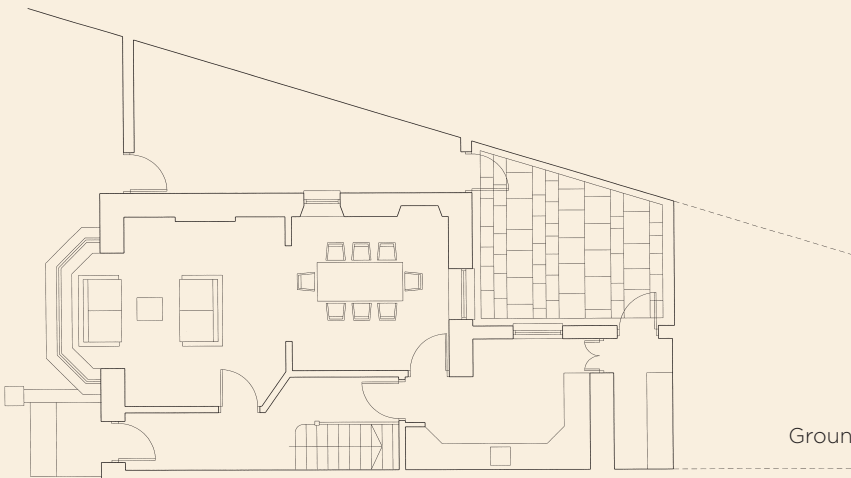
## Accommodation



Second Floor



First Floor



Ground Floor