

# To Lease

c. 102 Acres, Runnamoat, Ballinaheglish,  
Co. Roscommon. F42K540  
| *Farm Land*



## Price on Application

Prime lands to come to market for lease comprising c. 102 Acres in two adjoining lots being set together.

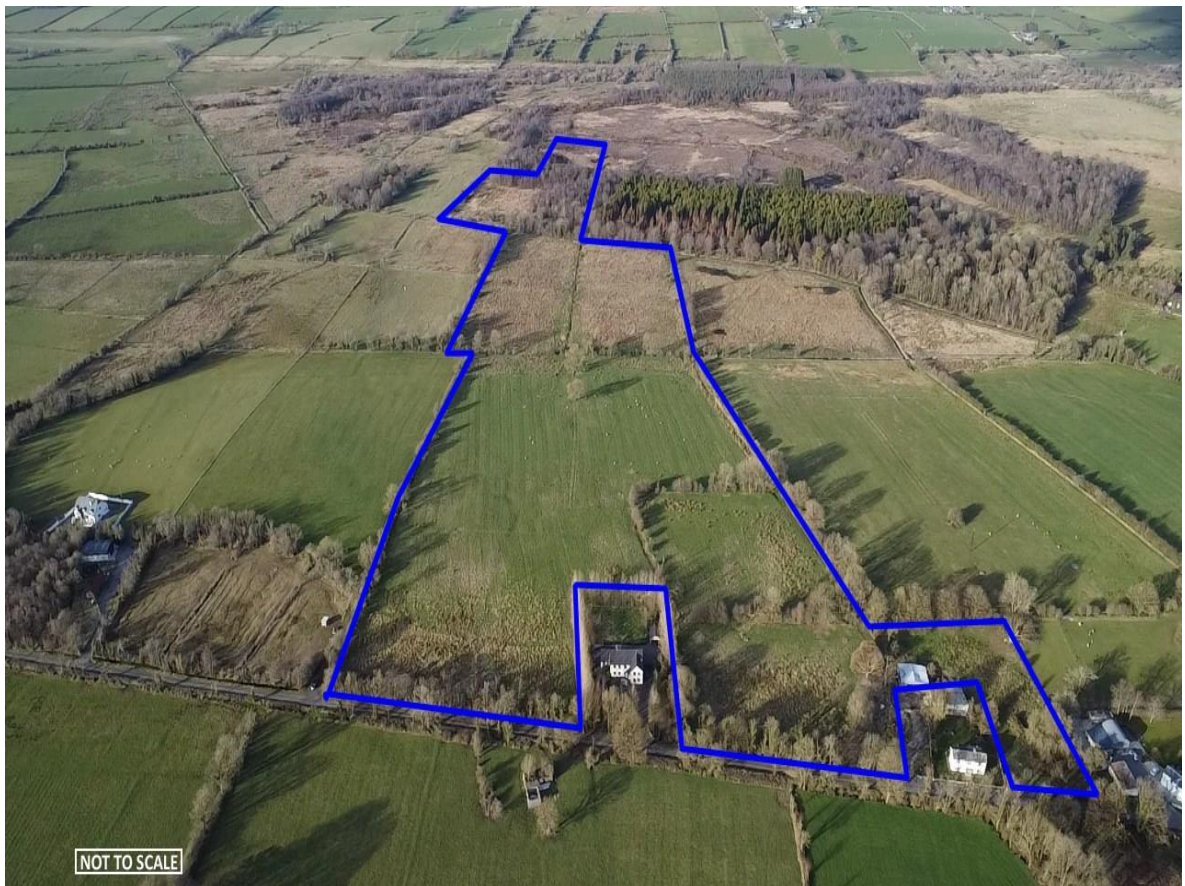
- Long term lease from 1st May 2025 (5 years or longer)
  - With or without entitlements
- Four bay double slatted shed standing thereon
  - Mains water
- Sheep & cattle only
- Eircode F42 K540

**For further details, contact DNG Ivan Connaughton on 090-6663700**









Office: Main Street, Athleague, Co. Roscommon. F42 TW70

Tel: 090-6663700

Email: [info@connaughtonauctioneers.ie](mailto:info@connaughtonauctioneers.ie)