



## Brooklodge Business Park...

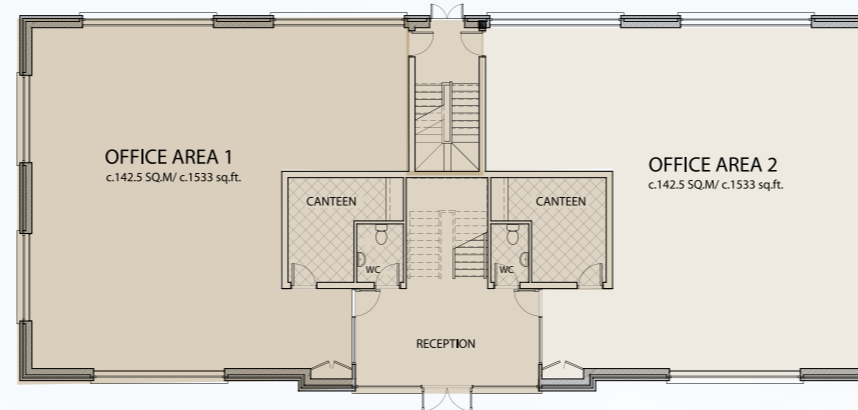
...is an exciting, new state of the art development, ideally situated in the Cork suburb of Glanmire, just 5 km east of Cork City.

As a business destination, Glanmire is unrivalled, being strategically located just off the N8 Dublin dual carriageway. To the south is the N25 dual carriage-way and Jack Lynch Tunnel (offering easy access to Cork International Airport), while the Port of Cork at Tivoli is located just 2 km to the south.

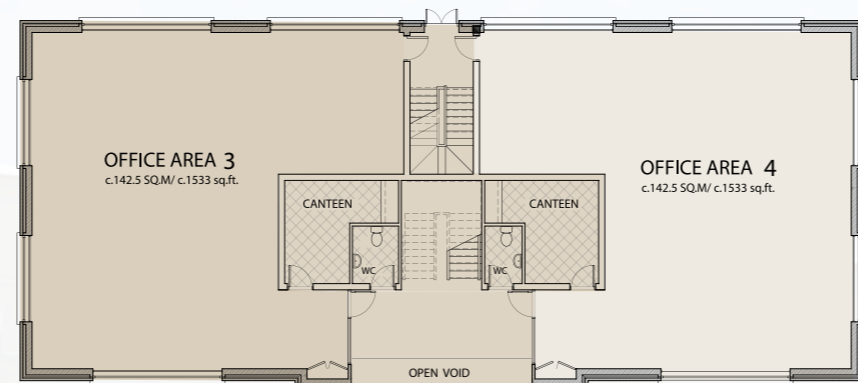
In recent years, Glanmire has seen exponential growth and now hosts a population of over 15,000 inhabitants. Glanmire's commercial and retail activity has expanded rapidly in recent years, this expansion is most clearly seen in the nearby Hazelwood Shopping Centre. Currently underserved in terms of quality commercial warehousing, Glanmire has seen no development of significance in the last ten years. Brooklodge Business Park brings to the market a unique, high quality commercial warehouse and office development that is second to none.



### Block A / Ground Floor



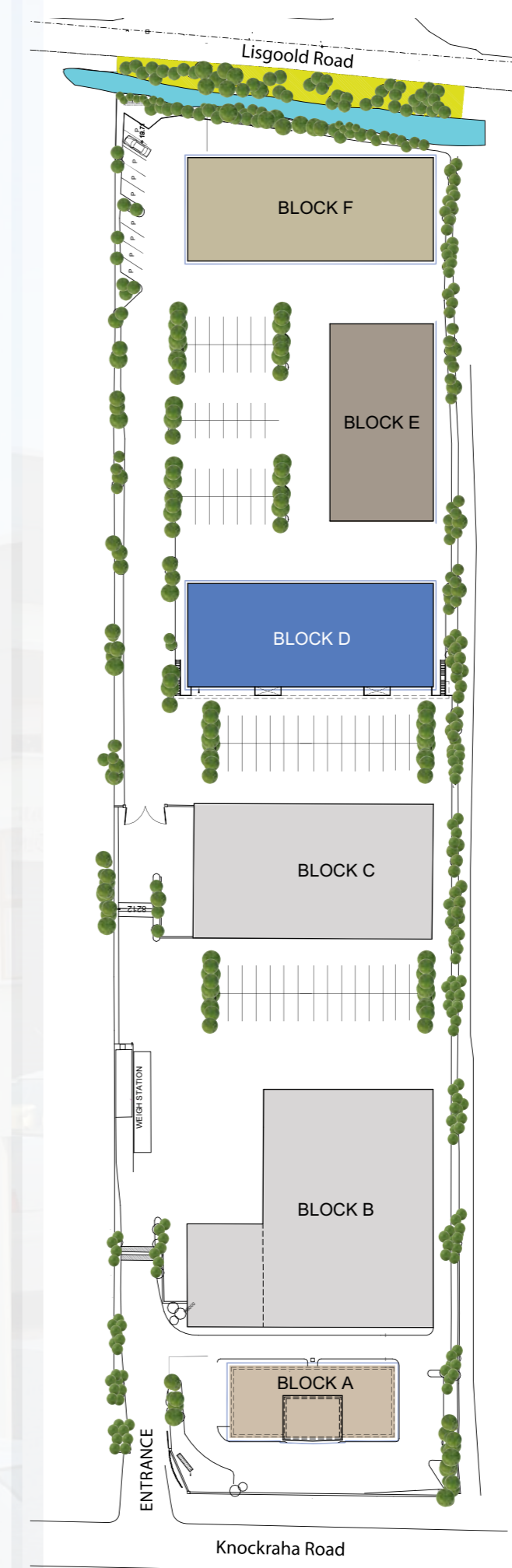
### Block A / First Floor



### Block D / Ground Floor



### Block D / Ground Floor 2



## Specifications

### Offices

- Energy efficient design and construction
- Energy efficient air conditioning system
- Raised access floors
- Suspended ceiling with category 2 reflection lighting
- 2.7m finished ceiling height
- Finished toilet accommodation off foyers
- Carparking facilities

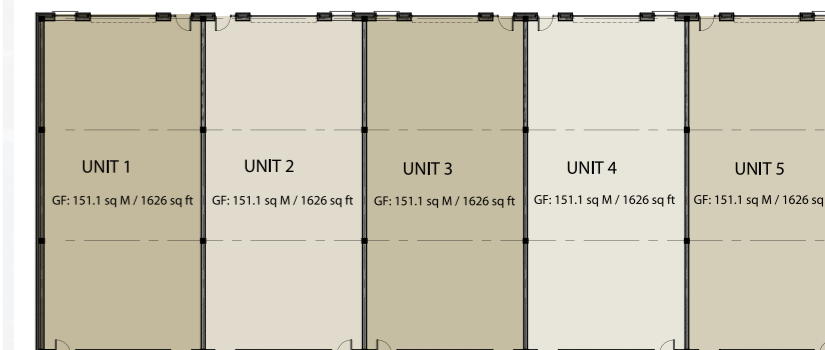
### Business units

- Energy efficient design and construction
- Height to eaves c.7.6m (Block D, c.3.7m)
- Insulated panel auto roller shutter doors
- High quality design business units incorporating lots of natural light

### Block E



### Block F



www.brooklodgebusiness.com



"Glanmire - a great business location"



**SELLING AGENTS**

RE/MAX Cork and County  
23 Marlboro Street, Cork.

**Tel:** 021 4277745

**E-mail:** info@remaxcork.ie  
**website:** www.remax.ie



www.brooklodgebusiness.com

**DEVELOPER**  
Rebus Holding Ltd.  
Evergreen House,  
Congress Road,  
Cork.

**CONSULTING ENGINEERS**  
DMA,  
Building A1,  
Fota Business Park,  
Carrigwohill,  
Cork.



**SOLICITOR**  
Carey Murphy & Partners  
Carey Murphy & Partners,  
23 Marlboro St,  
Cork.

**ARCHITECT**  
QDM Architecture  
Enterprise House,  
36 Mary Street,  
Cork.



**BROOKLODGE**  
BUSINESS PARK  
**GLANMIRE**

STATE OF THE ART COMMERCIAL WAREHOUSING & OFFICE UNITS

These particulars do not form any part of any contract and are for guidance purposes only. Maps and plans are not drawn to scale and measurements are approximate. Intending Purchasers/Lessee's must satisfy themselves as to the accuracy of details given to them verbally or as part of this brochure. Such information is given in good faith and believed to be correct. However, neither the developers or vendors, nor their agents shall be held liable for any inaccuracies therein.