

A spacious sixth floor apartment with
stunning views.

The Kestrel Building, Heuston South Quarter, Saint John's Road West, D08 W6W3

savills



A spacious sixth floor apartment with
stunning views.

The Kestrel Building, Heuston South Quarter, Saint John's Road West, D08 W6W3

savills



A spacious sixth floor apartment with stunning views.

The Kestrel Building, Heuston South Quarter, Saint John's Road West, D08 W6W3



About this property

Situated within the prestigious Heuston South Quarter development, built circa 2007, Apartment 292 The Kestrel Building is a generously proportioned and elegantly designed two-bedroom apartment. Ideally positioned on the doorstep to Dublin city centre, this vibrant urban development blends contemporary architecture with high-quality finishes, delivering an exceptional standard of modern living. Located on the sixth floor, this spacious two bedroom apartment enjoys impressive views out over Kilmainham gardens and a spacious balcony just off the light filled living area, perfect for al fresco dining. The accommodation comprises a welcoming entrance hall leading into a bright open-plan kitchen, living and dining area. The fully equipped kitchen offers ample counter space, while floor-to-ceiling windows flood the room with natural light. Off the hallway, the master bedroom includes built-in wardrobes and an ensuite shower room. The second double bedroom also benefits from custom-built wardrobes, and a well-appointed main bathroom. Additional features include a secure, designated underground parking space.



A spacious sixth floor apartment with
stunning views.

The Kestrel Building, Heuston South Quarter, Saint John's Road West, D08 W6W3



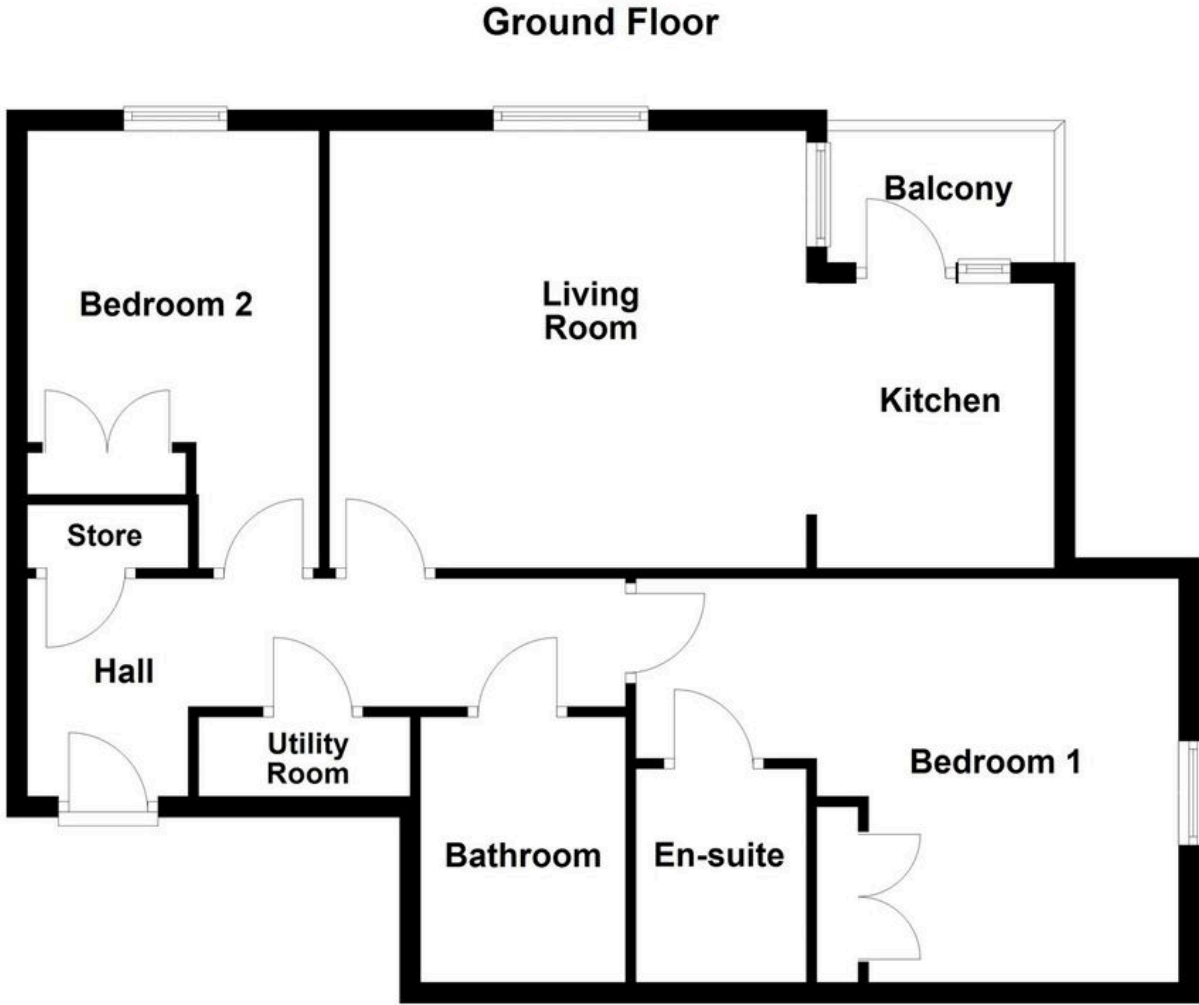
A spacious sixth floor apartment with
stunning views.

The Kestrel Building, Heuston South Quarter, Saint John's Road West, D08 W6W3



Plans

 812 sq ft



Total area: approx. 75.4 sq. metres

A spacious sixth floor apartment with
stunning views.

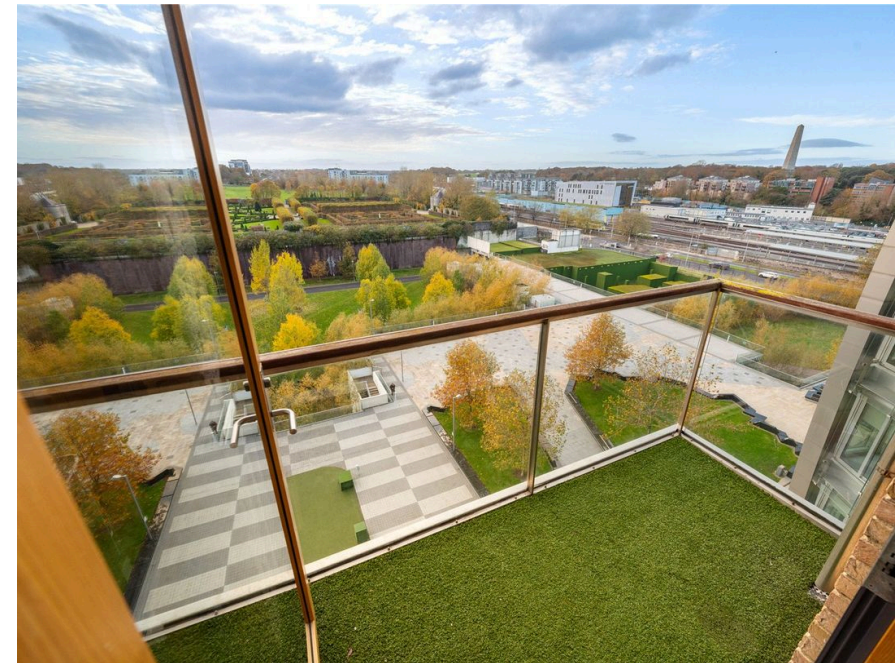
The Kestrel Building, Heuston South Quarter, Saint John's Road West, D08 W6W3

savills



Local Area

Heuston South Quarter occupies a landmark location between the Royal Hospital Kilmainham and St Johns Road, located in Dublin 8. The development is located just 500m from Heuston Station, a fifteen-minute walk to the Phoenix Park and 3km from the city centre. This exciting areas is famous for its historic landmarks, including Kilmainham Gaol, the Irish Museum of Modern Art (IMMA), housed in the stunning 17th-century Royal Hospital Kilmainham.



A spacious sixth floor apartment with stunning views.

The Kestrel Building, Heuston South Quarter, Saint John's Road West, D08 W6W3



Property Details

Key Features

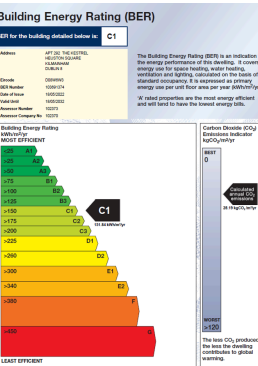
- Modern two bedroom, sixth floor apartment
- West facing aspect
- Walking distance of Phoenix Park
- Located minutes away from Heuston Station
- A secure underground car parking space is included
- Highly sought after development

Services & Additional Information

The development benefits from controlled fob access, 24-hour security, lift access, and comprehensive CCTV surveillance. Additionally, an on-site concierge service ensures the development is well-maintained and delivers a high standard of service to all occupants.

BER

BER Rating = C1



A spacious sixth floor apartment with
stunning views.

The Kestrel Building, Heuston South Quarter, Saint John's Road West, D08 W6W3



Enquire



Harry Angel
Dublin - Country
+353 (0) 1 618 1712
harry.angel@savills.ie



Rose Lyle
Dublin - Country
+353 (1) 618 1300
rose.lyle@savills.ie

More Information



[View on website](#)



[View Digital Brochure](#)



[Property Search](#)

Viewing strictly by appointment

Property Ref: DUY250278



Important Notice: Savills, its clients and any joint agents give notice that 1: They are not authorised to make or give any representations or warranties in relation to the property either here or elsewhere, either on their own behalf or on behalf of their client or otherwise. They assume no responsibility for any statement that may be made in these particulars. These particulars do not form part of any offer or contract and must not be relied upon as statements or representations of fact. 2: Any areas, measurements or distances are approximate. The text, photographs and plans are for guidance only and are not necessarily comprehensive. It should not be assumed that the property has all necessary planning, building regulation or other consents and Savills have not tested any services, equipment or facilities. Purchasers must satisfy themselves by inspection or otherwise. *powered by* **FluoPro**