



Sea Scape

Keatingstown, Wicklow



New development of 43 superb
2, 3 & 4 bedroom family homes.

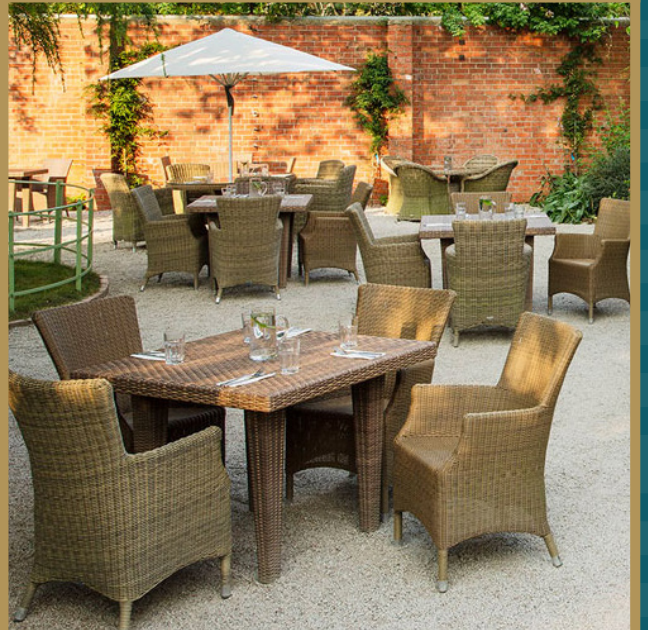




SEA SCAPE is positioned on a beautiful, elevated site that overlooks Wicklow Town and offers stunning views of the Irish Sea, all while being based in a community that is home to a number of amenities including shops, schools and a bustling Town Centre. Co. Wicklow is commonly known as the Garden of Ireland thanks to its stunning countryside & diverse landscape. From mountains & woodlands, to seaside walks with quaint villages & towns filled with character, Keatingstown is a newly established area offering a host of amenities for any individual looking to have the peace of country living while remaining within striking distance of Dublin, Wexford, Kildare & their surrounding areas.



Sea Scape
Keatingstown, Wicklow

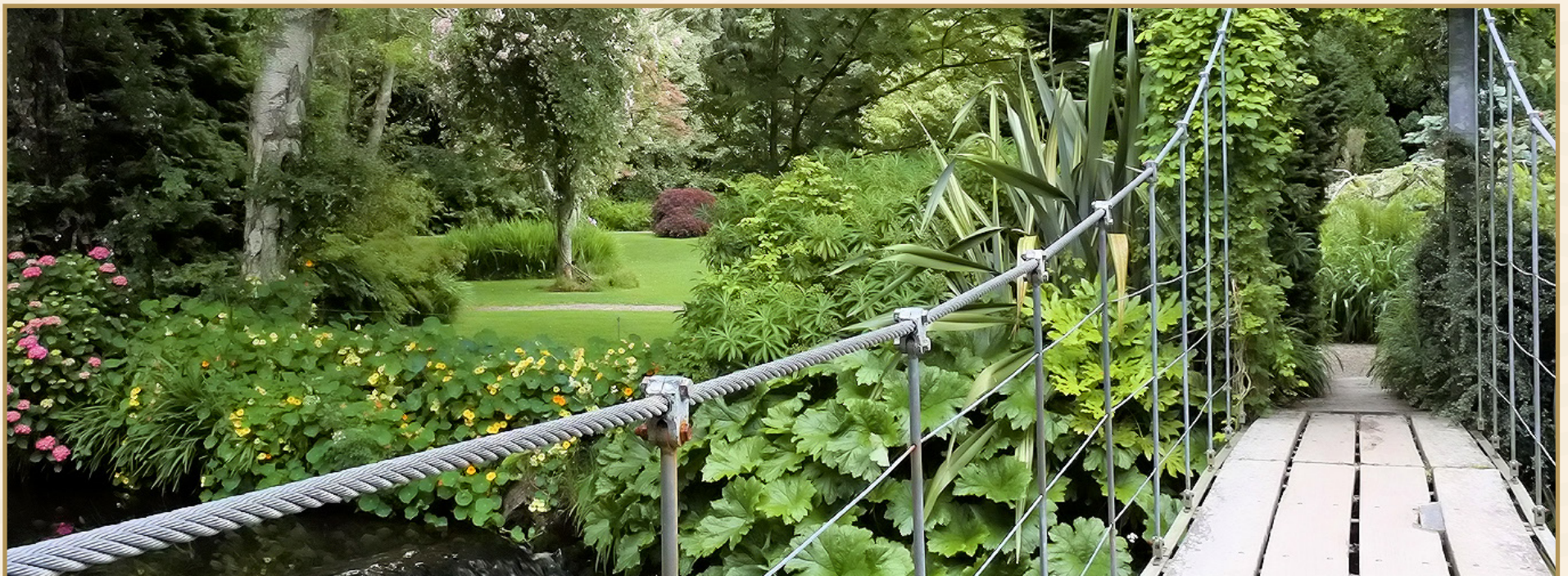


Area Guide

Wicklow Town offers an ideal location for all ages & caters for a host of interests. Be it the stunning 18th Century Kilmacurragh Botanic Gardens, Lunch at Avoca Mount Usher, Golf at the stunning 18-hole cliff top Wicklow Golf Club, or a walk to the easternmost point of mainland Ireland to the Lighthouse at Wicklow Head, Wicklow Town provides you with it all.

As a location for families, Sea Scape is ideal. Children and adults alike will love the feeling of freedom that comes with living in the countryside, while Keatingstown and its surrounding villages offer a host of excellent facilities for families of all ages. From pre-schools to secondary schools, every child can enjoy an excellent education without travelling far; local choices include Coláiste Chill Mhantain Secondary School, the newly built Wicklow Educate Together National School and St. Coen's National School.

The countryside and coastline offer a wide range of sporting activities & pursuits with Hill Walking, Mountain Climbing, Swimming, Rowing & Sailing, and stunning Cycling Trails, located all around the Wicklow Mountains. For those who prefer team sports, there are a host of clubs and teams in the area, including GAA, Rugby, Athletics, Soccer & Tennis. Equestrian sports are also strong in the area, with facilities available close by. Additionally, some of Ireland's best golf courses are situated only minutes away. Food and Entertainment are also well catered for with a wide range of Cafés, Restaurants & Bars on hand, expanding to the towns & villages that encompass it.



The Ash

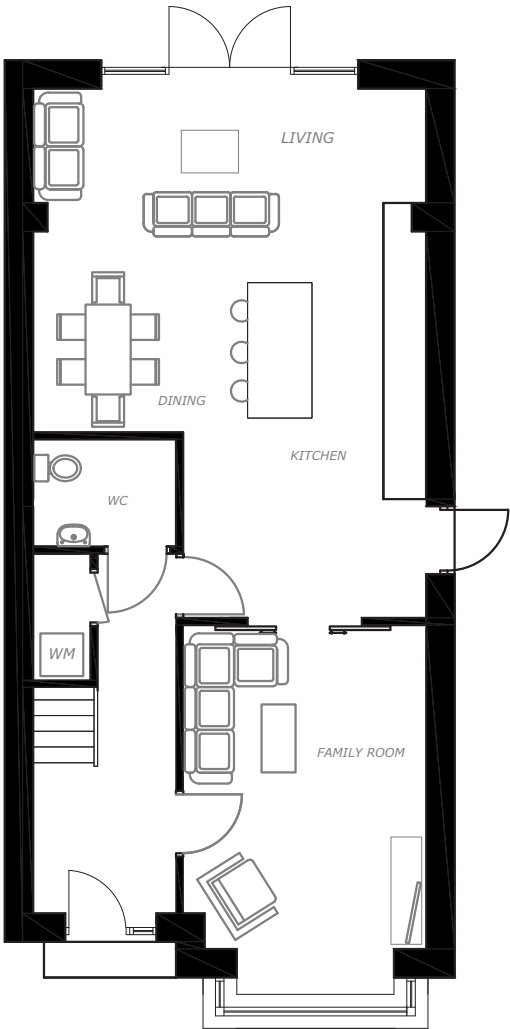
4 bedroom detached

159.11 SQ. MTS

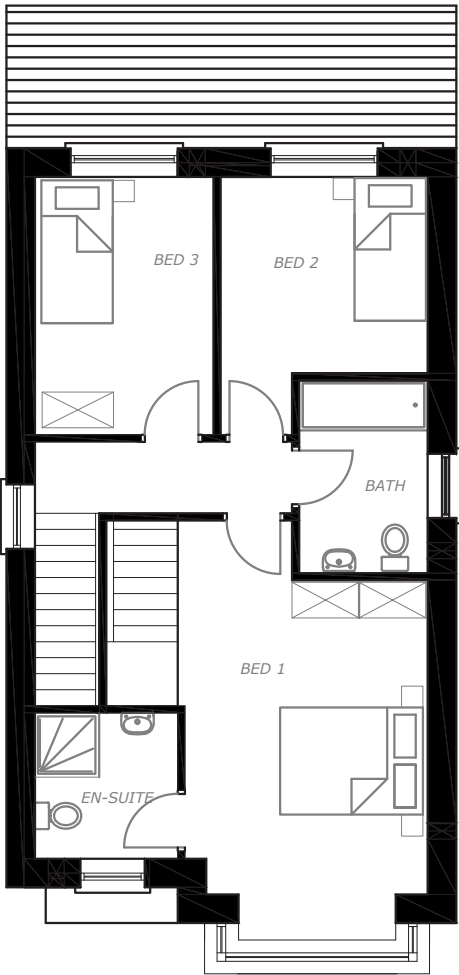
BER A3



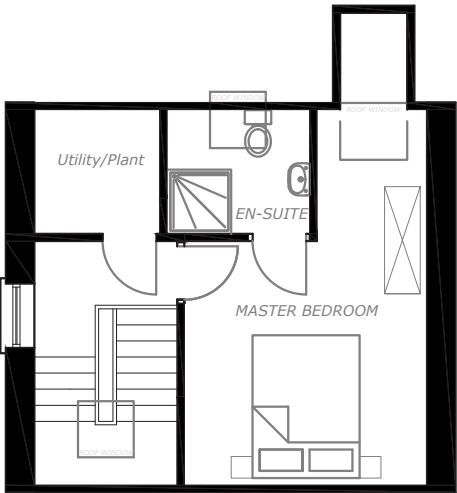
Sea Scape
Keatingstown, Wicklow



Ground Floor Plan



First Floor Plan



Second Floor Plan

The Oak

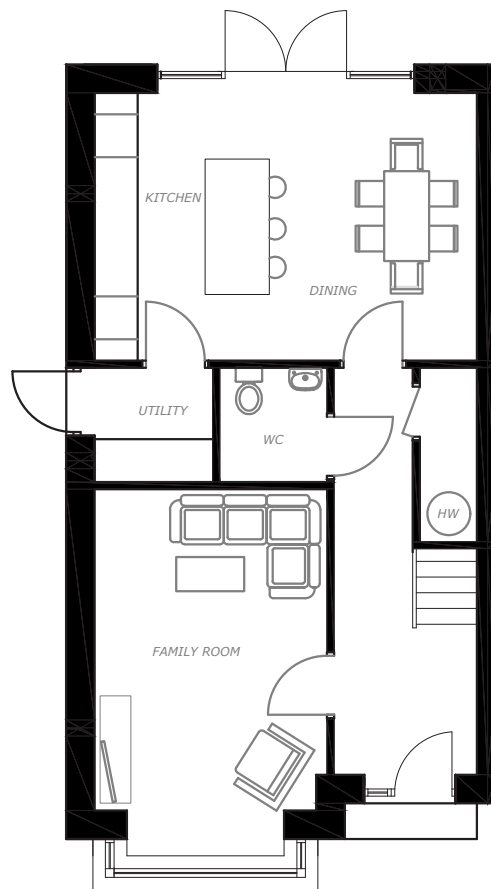
4 bedroom semi detached

144.47 SQ. MTS

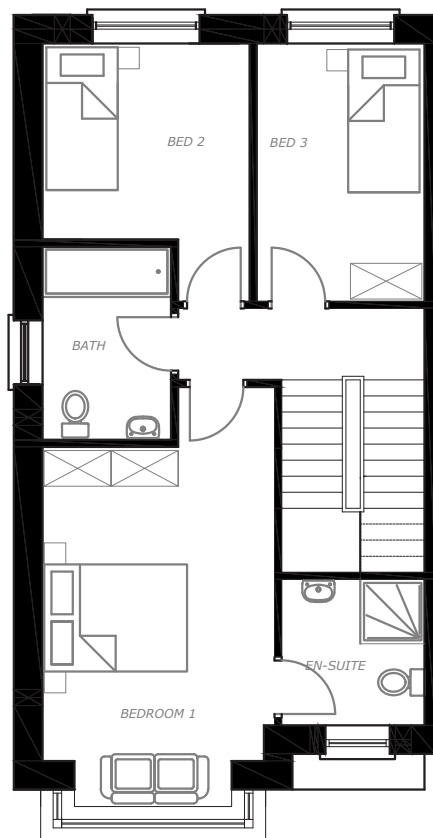
BER A3



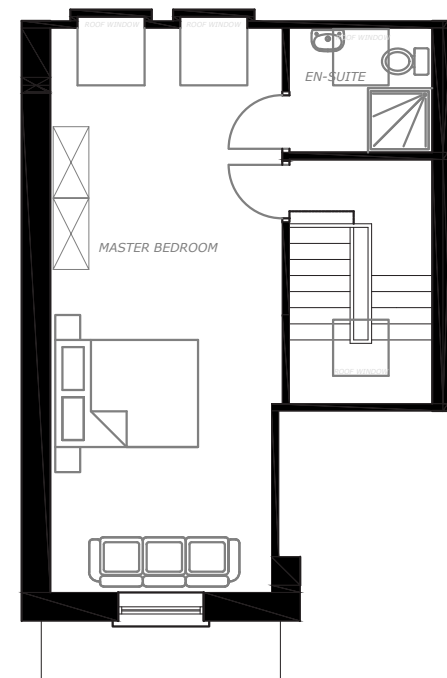
Sea Scape
Keatingstown, Wicklow



Ground Floor Plan



First Floor Plan



Second Floor Plan

The Cherry

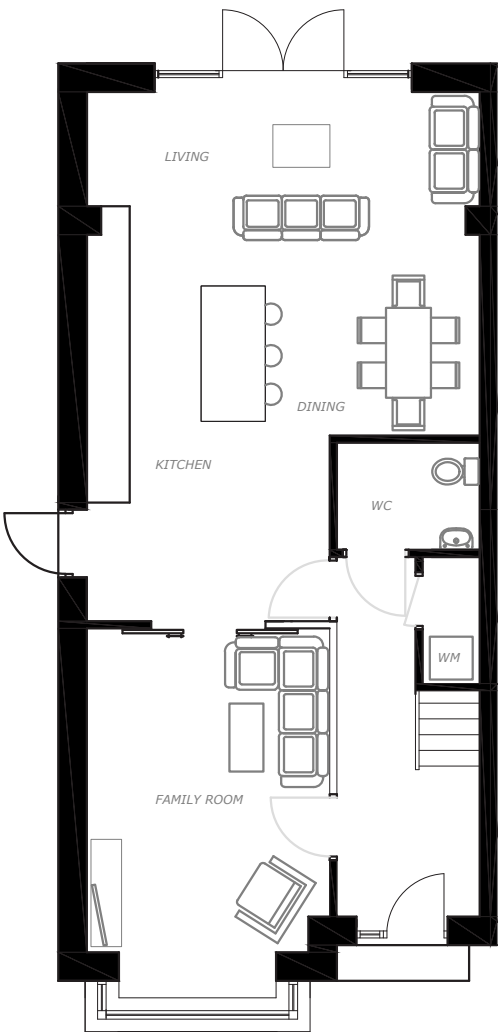
4 bedroom semi detached

159.11 SQ. MTS

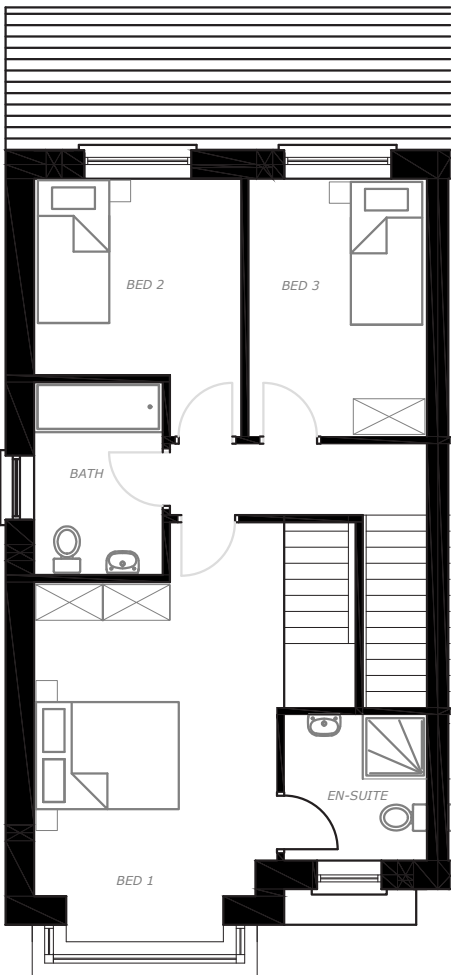
BER A3



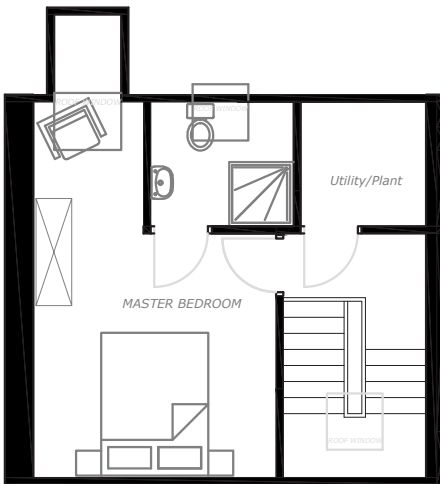
Sea Scape
Keatingstown, Wicklow



Ground Floor Plan



First Floor Plan



Second Floor Plan

The Walnut

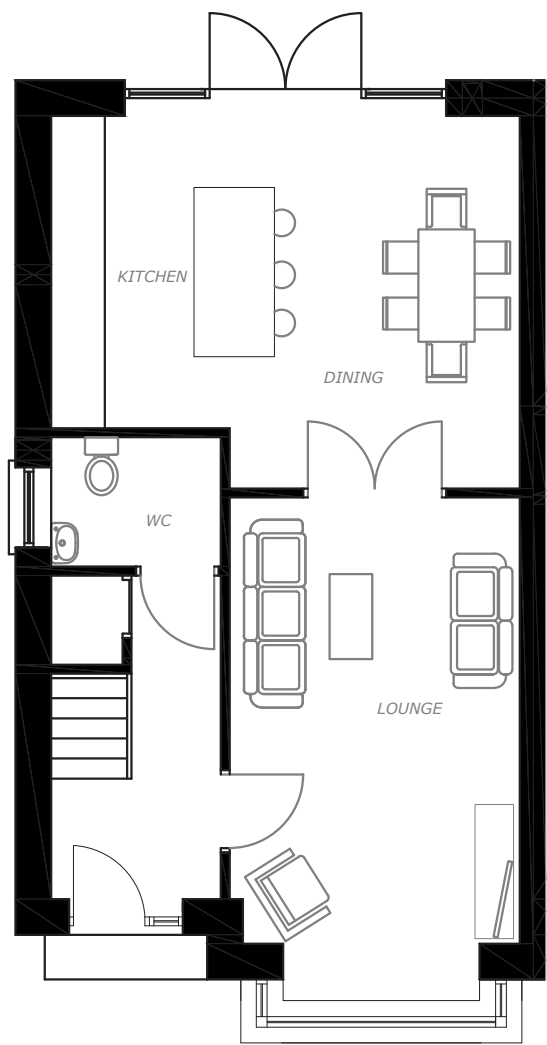
3 bedroom end terrace townhouse

98 SQ. MTS

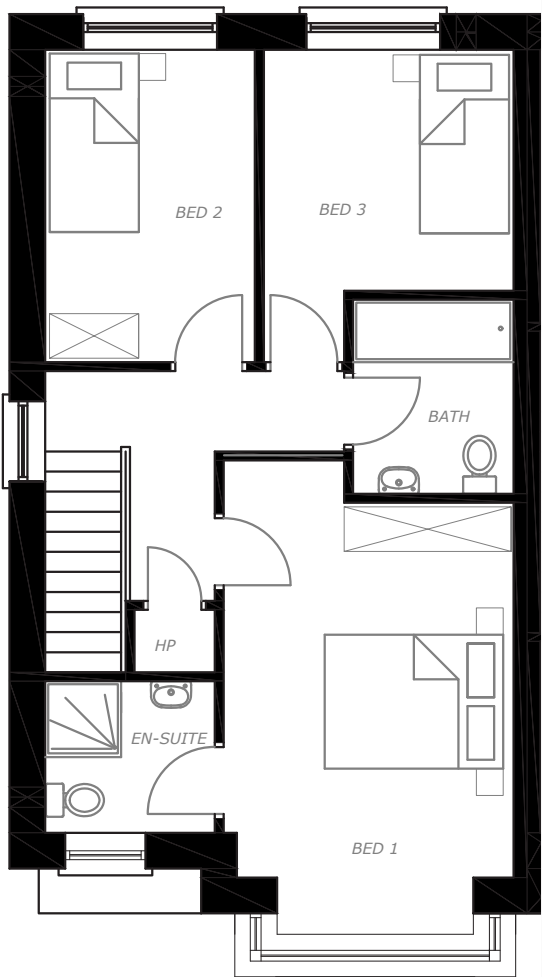
BER A3



Sea Scape
Keatingstown, Wicklow



Ground Floor Plan



First Floor Plan

The Willow

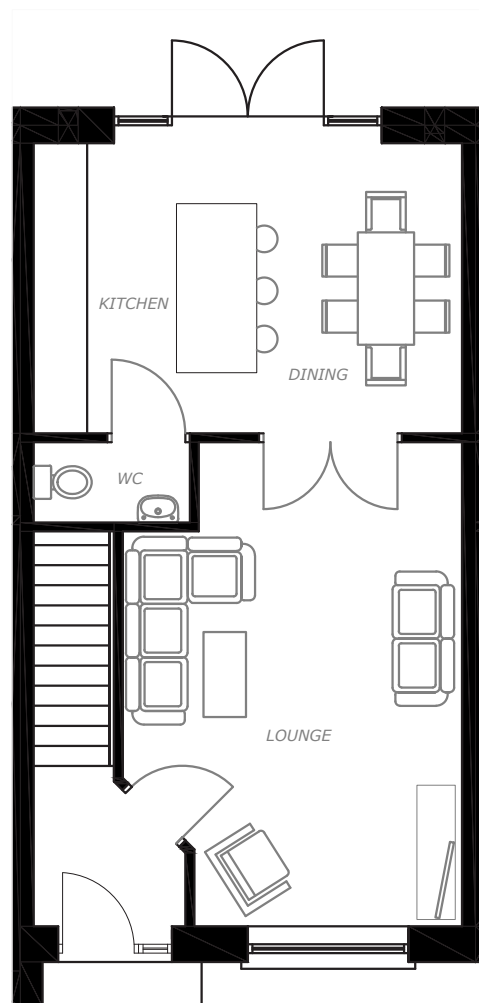
2 bedroom mid terrace townhouse

84.24 SQ. MTS

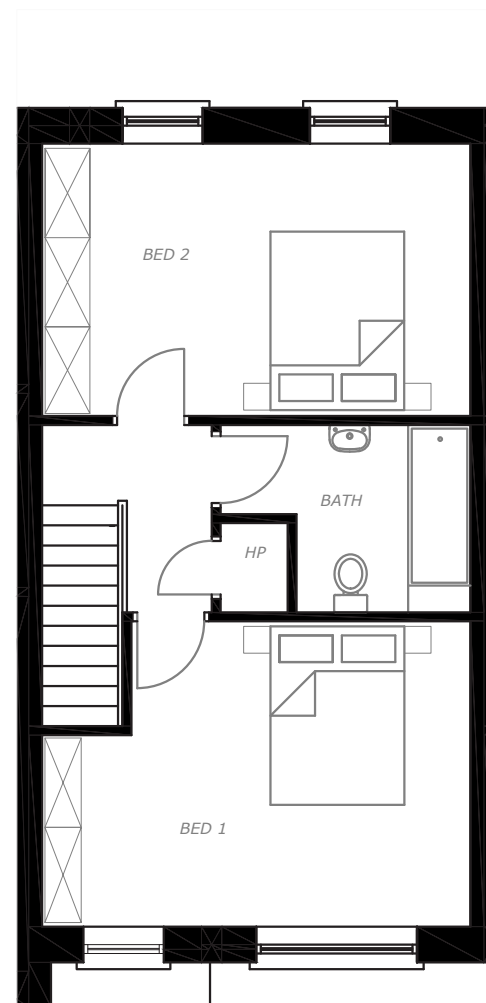
BER A3



Sea Scape
Keatingstown, Wicklow



Ground Floor Plan



First Floor Plan

The Laurel

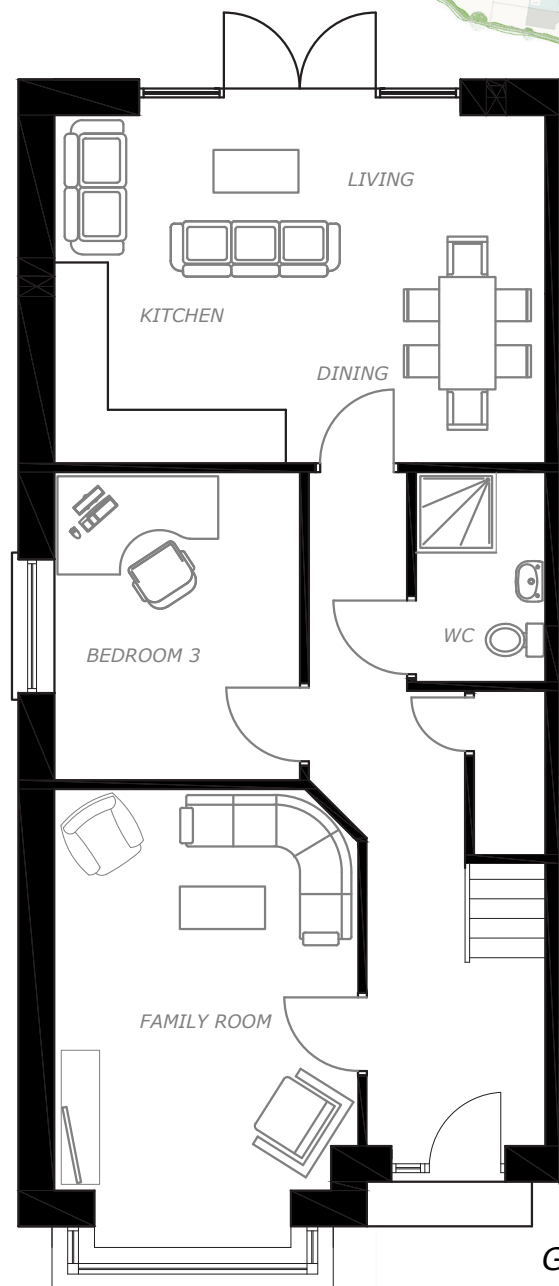
3 bedroom semi detached
dormer bungalow

84.24 SQ. MTS

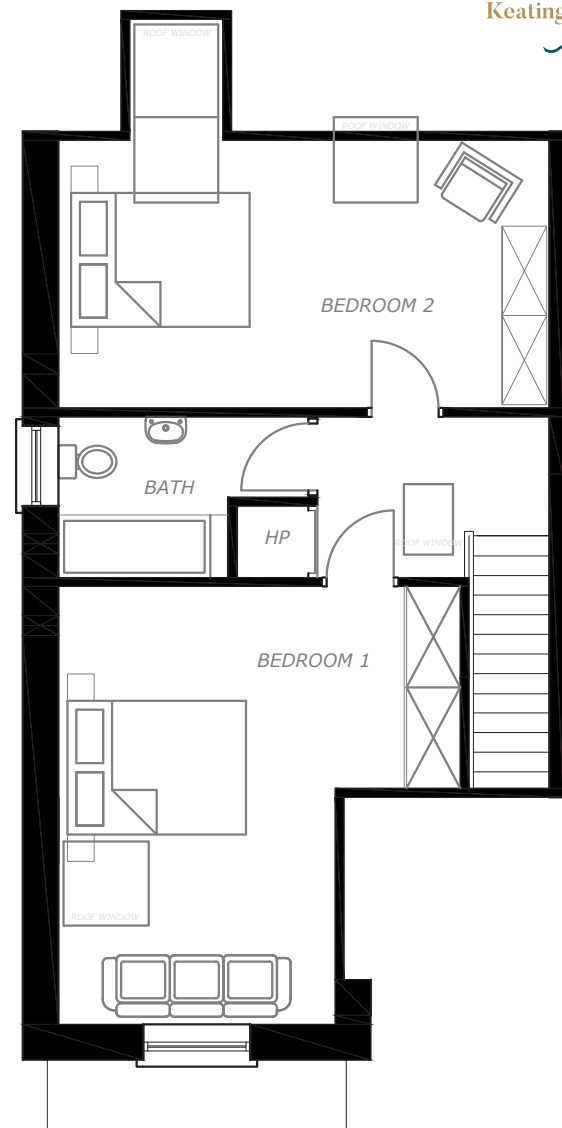
BER A3



Sea Scape
Keatingstown, Wicklow



Ground Floor Plan



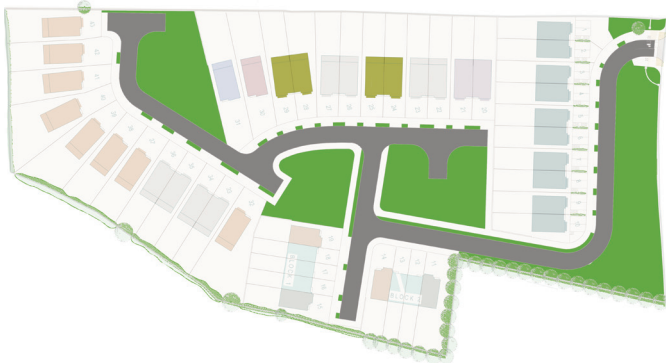
First Floor Plan

The Elm

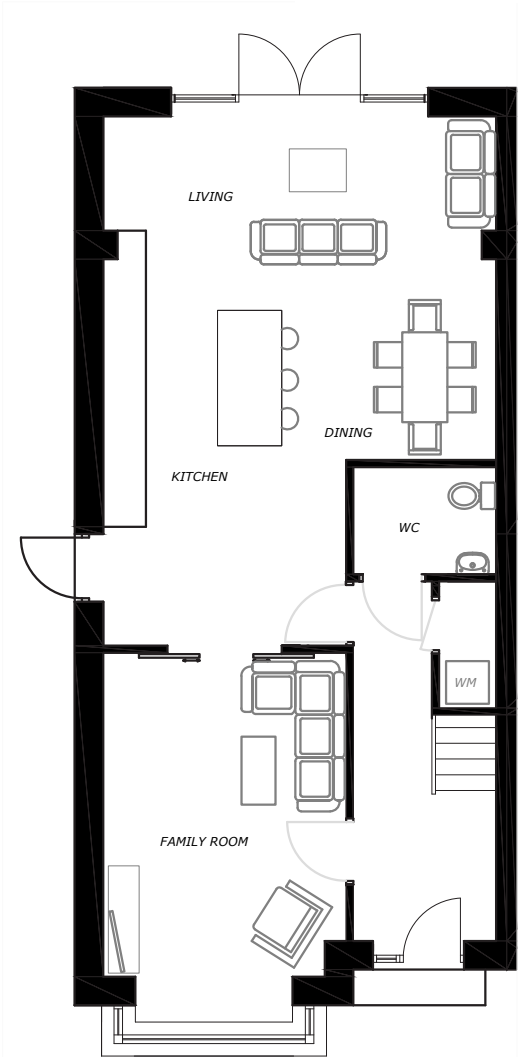
4 bedroom semi detached

159.11 SQ. MTS

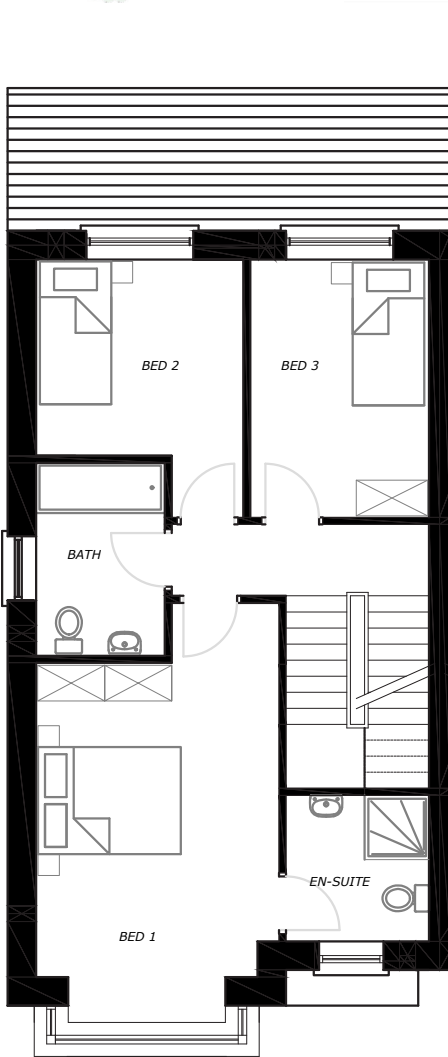
BER A3



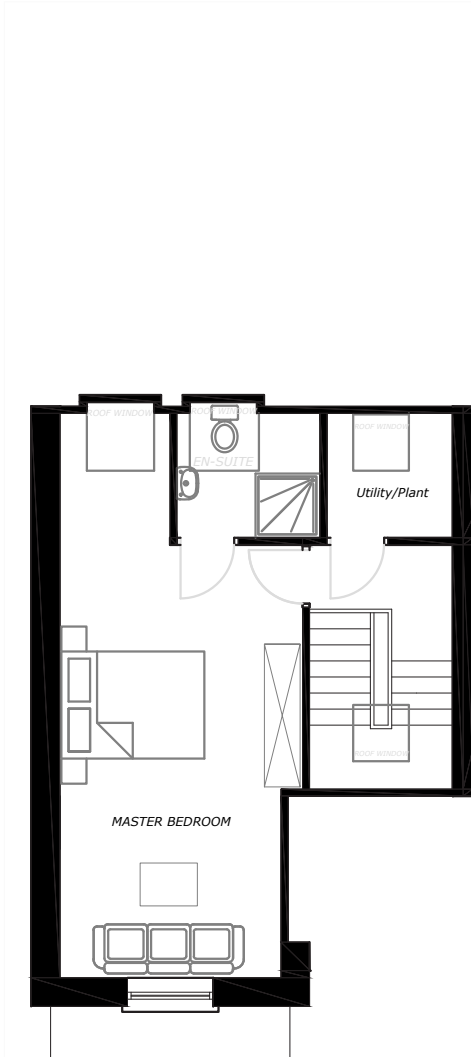
Sea Scape
Keatingstown, Wicklow



Ground Floor Plan



First Floor Plan



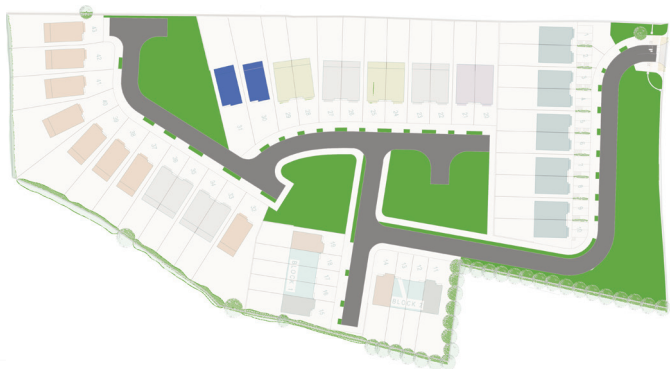
Second Floor Plan

The Hazel

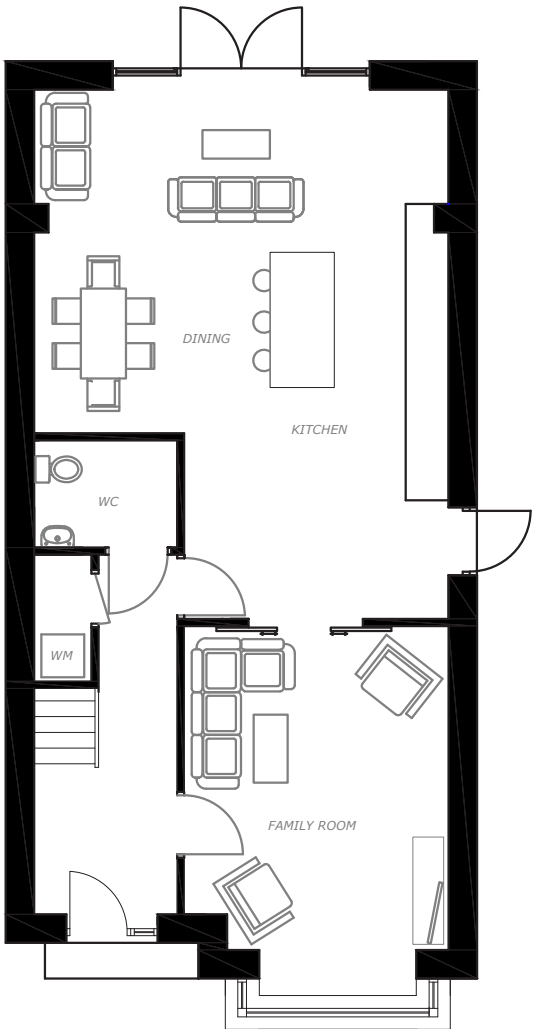
4 bedroom detached

176.06 SQ. MTS

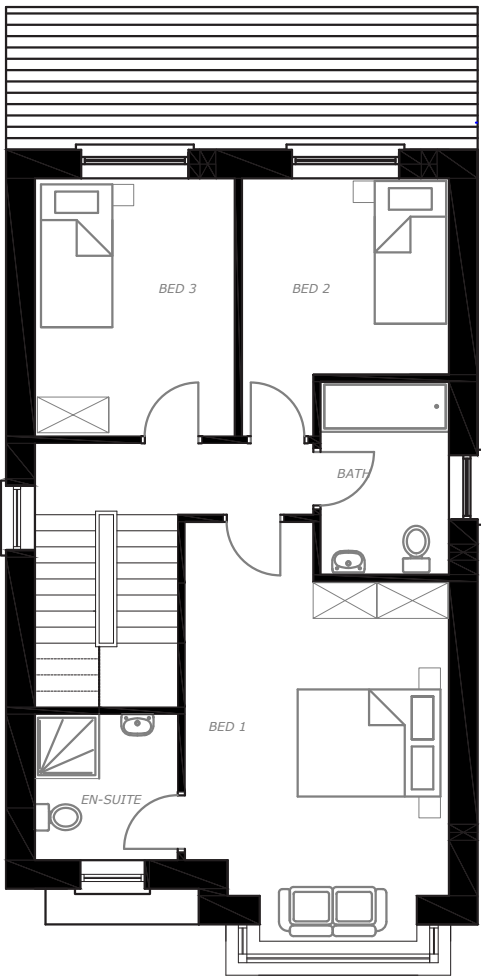
BER A3



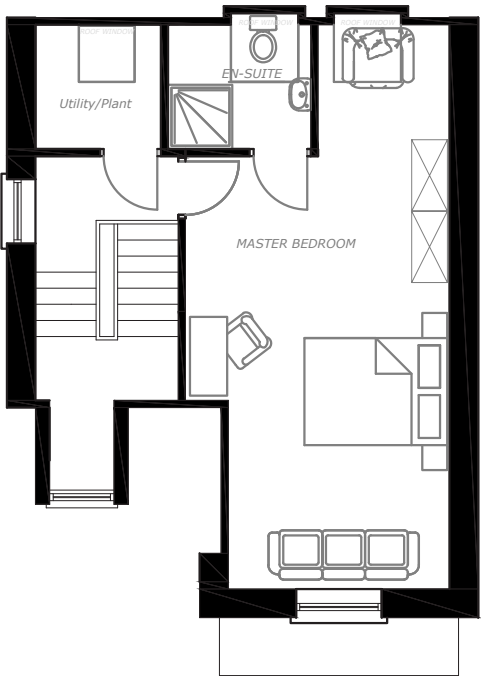
Sea Scape
Keatingstown, Wicklow



Ground Floor Plan



First Floor Plan



Second Floor Plan



Dublin

Dublin Bay

M50

Sandyford

Cherrywood

Enniskerry

Bray

Greystones

Wicklow Mountains
National Park

Roundwood

Glendalough

Wicklow

Brittas Bay

Avoca

Arklow

Sea Scape

Travelling to Dublin

Located moments from the N11 Road, Sea Scape is a new development brimming with opportunity for buyers to live away from the fast-moving Dublin City Centre while still maintaining an easily serviceable connection. With proximity to the M50 enabling swift access to a host of arterial routes alongside Dublin Airport, and a choice of public transport available in Wicklow Town via Bus Eireann’s Route No. 133, the Wicklow Train Station just 2.5km away, or the fast and convenient DART Light Rail service at Greystones (less than 20 minutes), Sea Scape offers itself as a serious contender for commuters and families alike.



Dublin City Centre
APPROX 60 MINUTES



Dublin City Centre
APPROX 60 MINUTES



Dublin City Centre
APPROX 40 MINUTES







M50
APPROX 20 MINUTES



Sandyford
APPROX 25 MINUTES



-  The Ash
-  The Cherry
-  The Willow
-  The Walnut

-  The Laurel
-  The Hazel
-  The Elm
-  The Oak

Professional Team

Developer :
Ballyneerrin Eco Developments Ltd.



Solicitor:
Moran & Ryan Solicitors
Baggot Hall,
Lower Baggot Street,
Dublin 2.
t: (01) 8725622
w: www.moranryan.com



105 Terenure Road East,
Dublin 6, D06 XD29.
t: (01) 490 3201
f: (01) 490 7292
e: enquiries@jpmdoyle.ie

PSRA Licence Number: 002264

