



Bryan J Corcoran

071 9150155 087 2449053

info@corcoranauctioneers.com www.corcoranauctioneers.com

For Sale by Private Treaty



32 MARTIN SAVAGE TERRACE, SLIGO. F91 RXE4.

Attractive 2 Bedroom End of Terrace home
in a peaceful residential setting with Doorly Park on your doorstep.

This comfortable residence is in excellent repair
and it has many attractive features.

The house is 5 mins walk from Sligo City Centre.

All amenities and services close by.

IDEAL STARTER HOME OR INVESTMENT PROPERTY.

VIEWING HIGHLY RECOMMENDED.

ACCOMMODATION:

GROUND FLOOR:

Living room 15'5" (4.7m) x 9'10" (3m)

Feature solid fuel stove. Laminate flooring.

Kitchen / Dining area 15'5" (4.7m) x 14'9" (4.5m)

Fully fitted kitchen. Tiled flooring. Recess lighting. Built in oven, gas hob and extractor fan. Feature open fireplace.

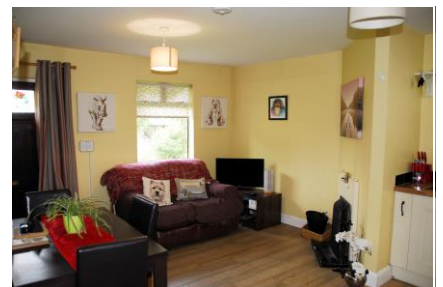
Rear Hallway and back door

Utility 5'11" (1.8m) x 5'6" (1.68m)

Tiled flooring. Plumbed for washing machine and dryer.

WC

Fully tiled.



FIRST FLOOR:

Bedroom 1 15'5" (4.7m) x 7'10" (2.39m)

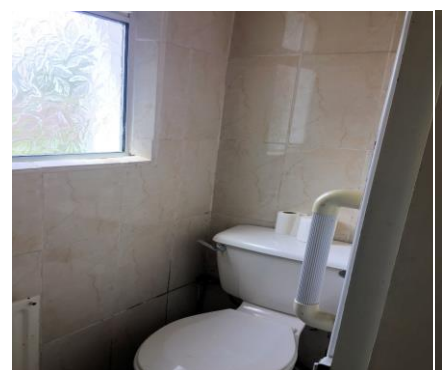
Double room. Carpet. Full length built in wardrobes.

Bedroom 2 14'9" (4.5m) x 8'6" (2.59m)

Double room. Carpet. Built in wardrobe.

Bathroom 8'10" (2.69m) x 7'3" (2.21m)

Laminate flooring. Partially tiled. Electric shower. Bath. WC. WHB.



SPECIAL FEATURES:

- Property is in excellent repair
- Convenient location close to all amenities and services
- Landscaped gardens front and rear
- uPVC Double glazed windows
- O.F.C.H
- Off street parking
- Burglar alarm
- Rear patio South facing
- Doorly Park amenity close by
- Ideal starter home or Investment property



BER No: 103024923 EPI: 218.17 kWh/m²/yr



SIZE: 78.75 m² [847 SqFt]



AMV: €175,000

