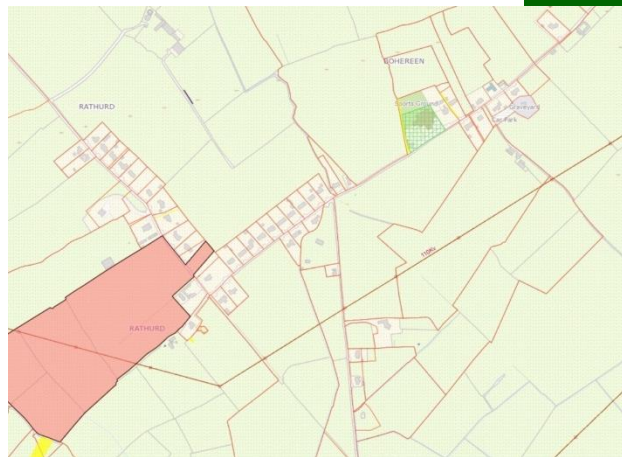


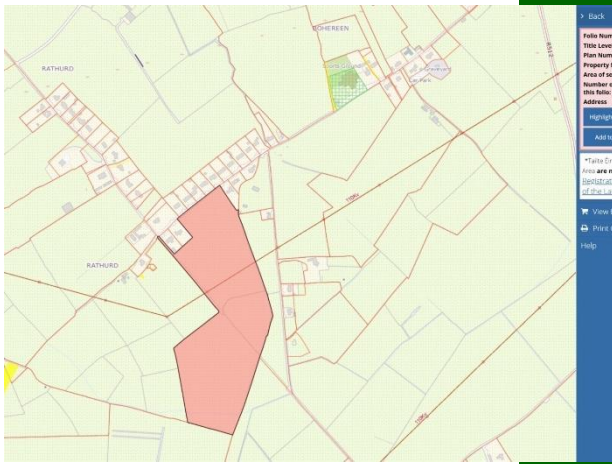


## Rathuard, Ballysheedy, Co. Limerick



**Price on Application**





## For Sale by Private Treaty

Prime roadside holding extending to Circa 58 st acre in total and for sale in two separate lots. Superb location in close proximity to Limerick City making this a ideal investment opportunity. Ideal for all types of farming use.

Lot 1: Folio LK 10528: Circa 30.66 acres (12.41 hectares) or thereabouts of truly superb land well laid out in easily managed divisions and well fenced.

Lot 2: Folio LK10528: Circa 27.4 acres (11.10 hectares) or thereabouts of medium quality land. Good road frontage. Needs drainage.

Inspection of these very attractive holdings highly recommended.

Note: Drone images for illustration purposes only.

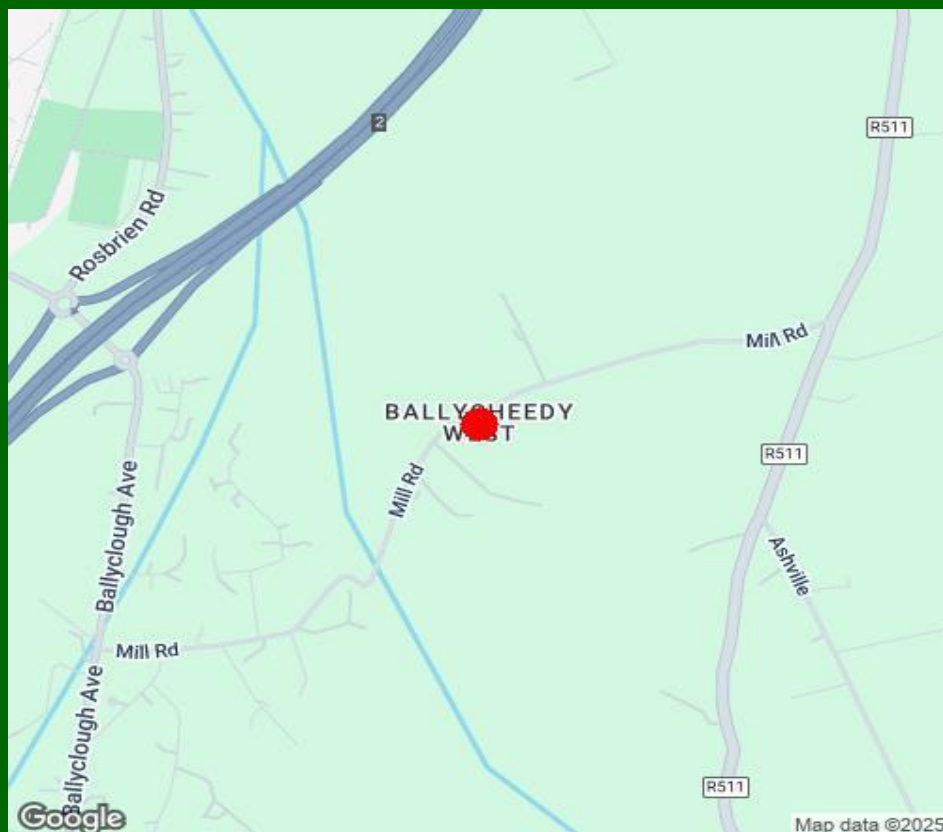
Full details on request. Call Tom Crosse 087 2547717 or John O Connell 087 6470746.

<

### Features:

- Two attractive lot sizes
- Within 5 minutes drive of Limerick City
- Good frontage in lot 2
- Lot 1 is superb quality land
- Reasonable price points





### Property Directions:

Enter Eircode V94 HH4C in your mobile device. Land located immediately adjacent. GVM signs thereon.

### Agent Information:

**Cntact :- Tom Crosse**

**Mobile :- 087-2547717**

**Email : - tomcrosse@gvm.ie**

#### Disclaimer

These particulars do not form any contract and are for guidance purposes only. Computer generated images, maps and plans are not drawn to scale and measurements are approximate and for guidance only. Intending purchasers must satisfy themselves as to the accuracy of detail given to them verbally or as part of this brochure. Such information is given in good faith and believed to be correct. However neither the vendor nor their agents shall be held liable for any inaccuracies therein.

#### Limerick Office

25-26 Glentworth St,  
Co. Limerick,  
V94WE12

Phone: (061)413522

Email: [limerick@gvm.ie](mailto:limerick@gvm.ie)

#### Kilmallock Office

Head Office,  
Railway Road,  
Kilmallock,  
Co. Limerick

Phone: (063)98555

Email:  
[kilmallock@gvm.ie](mailto:kilmallock@gvm.ie)

#### Tullamore Office

GVM Mart,  
Arden Road,  
Tullamore,  
Co. Offaly

Phone: (057)9321196

Email:  
[tullamoreproperty@gvm.ie](mailto:tullamoreproperty@gvm.ie)

