

For Sale

Asking Price: €179,000

Sherry
FitzGerald
O'Neill



11 The Quays, Levis Quay,
Skibbereen, Co Cork. P81 RK00

BER B2

sherryfitz.ie



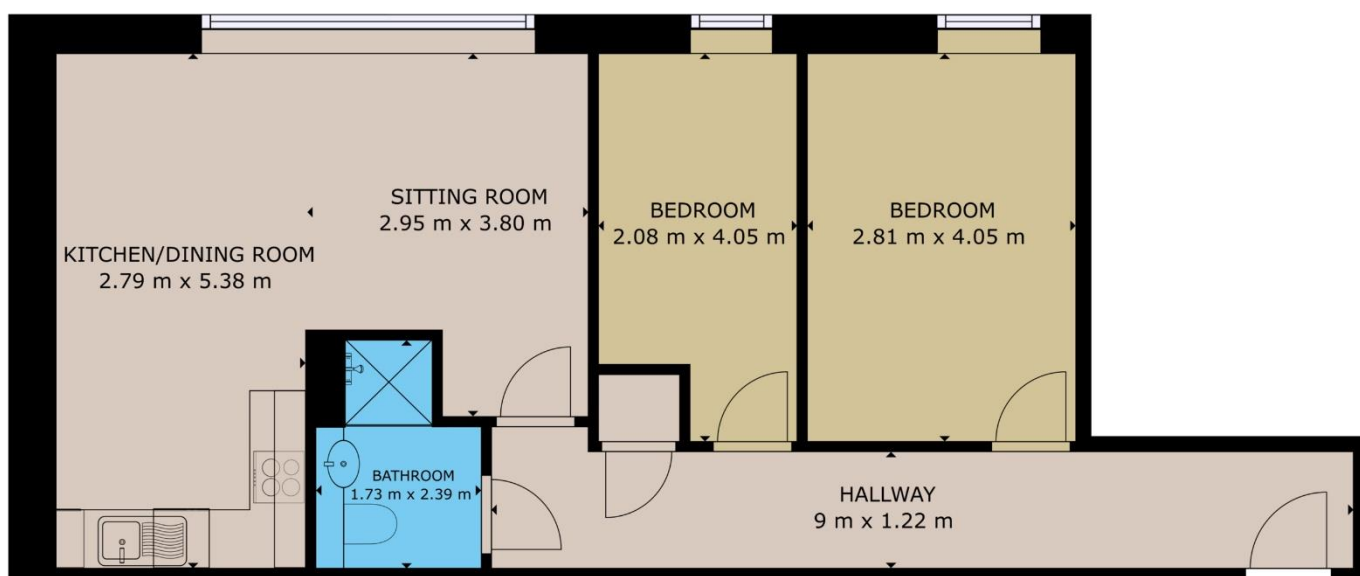
11 The Quays is a bright two-bedroom apartment located within a modern development, built c. 2006. Located just off the main street, The Quays complex is a popular development in the heart of Skibbereen town. While it is conveniently located in the town centre, the development is situated in a quiet and private location.

This apartment is located on the first floor which can be accessed by both lift and stairs. Accommodation comprises entrance hall with hot press, bright lounge/dining/kitchen area, a double bedroom, single bedroom and bathroom.

This development offers excellent rental potential, making it an ideal investment property or a home for someone looking for town-centre living.

Skibbereen is a busy market town with a number of excellent shops & supermarkets, bars, restaurants, a thriving farmer's market, schools and other social amenities. Also located in Skibbereen is The Ludgate Hub which boasts a 1GB connection and facilitates up to 75 people in a creative co-working digital environment for individuals, start-ups or established companies.





GROSS INTERNAL AREA

TOTAL : 61.14 m²

Whilst every attempt has been made to ensure the accuracy of the floor plan contained here, measurements of doors, windows, rooms and any other items are approximate and no responsibility is taken for any error, omission, or misstatement. This plan is for illustrative purposes only and should be used as such by any prospective purchaser.



NEGOTIATOR

Niamh Moloney
Sherry FitzGerald O'Neill
37 North Street, Skibbereen,
Co Cork
T: 028 21404
E: info@sfoneill.ie

VIEWINGS

Strictly By Appointment Only

ENERGY RATING

BER: B2
Cert No.: 118310085
EPI: 110.08 kWh/m²/yr

sherryfitz.ie
sfoneill.ie
myhome.ie
daft.ie

CONDITIONS TO BE NOTED: A full copy of our general brochure conditions can be viewed on our website at <http://www.sherryfitz.ie/terms>, or can be requested from your local Sherry FitzGerald office. We strongly recommend that you familiarise yourself with these general conditions. While care has been taken to ensure that information contained in Sherry FitzGerald publications is correct at the time of publication, changes in circumstances after the time of publication may impact on the accuracy of this. PSRA Registration No. 004158