



Laghile, Cratloe, Co. Clare



Guide Price

€349,000



Welcome to your dream home! This stunning two-bedroom bungalow, set on an expansive 0.75-acre site, offers a perfect blend of tranquility and convenience. Located just minutes from the M18, this property ensures effortless access to the bustling hubs of Limerick, Shannon, and Ennis.



Step inside to discover a spacious and light-filled interior, featuring a charming open-plan living area ideal for both relaxation and entertaining. The modern kitchen generous floor and eye level presses with ample storage, making it a delight for any home chef. Each of the two generously-sized bedrooms is designed for comfort, with large windows that frame picturesque views of the magnificent gardens. The contemporary bathroom is fitted with high-quality fixtures and fittings.



Outside, the vast garden provides endless opportunities for outdoor living and entertaining, with ample space for a patio, BBQ area, or even a home vegetable garden. The large site also offers potential for expansion, subject to planning permission.

This property is a true gem, combining the peace of rural living with unparalleled accessibility to major towns and amenities. There is a renowned local primary school, and some shopping amenities together with some local shops and pubs. Don't miss your chance to own this beautiful bungalow – contact us today to arrange a viewing!



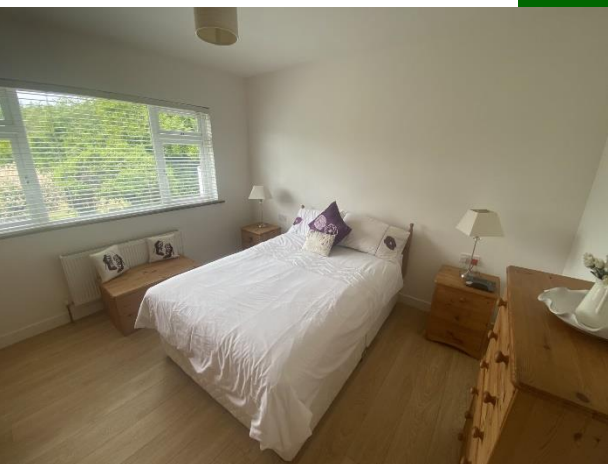
Rooms:

Entrance hallway

Laminated flooring

Sitting room

Solid timber flooring. Marble feature fireplace. TV point.
4.02m (13'2") x 3.05m (10'0")



Kitchen

Fully fitted kitchen

4.01m (13'2") x 3.08m (10'1")

Utility

Fully plumbed with washing machine and tumble dryer.
2.01m (6'7") x 2.03m (6'8")

Walk in hotpress



Bedroom 1

Double bedroom with laminated flooring. Built in wardrobes.

4.01m (13'2") x 3.07m (10'1")

Bedroom 2

Double bedroom with laminated flooring. Built in wardrobes.

3.05m (10'0") x 3.05m (10'0")



Shower room

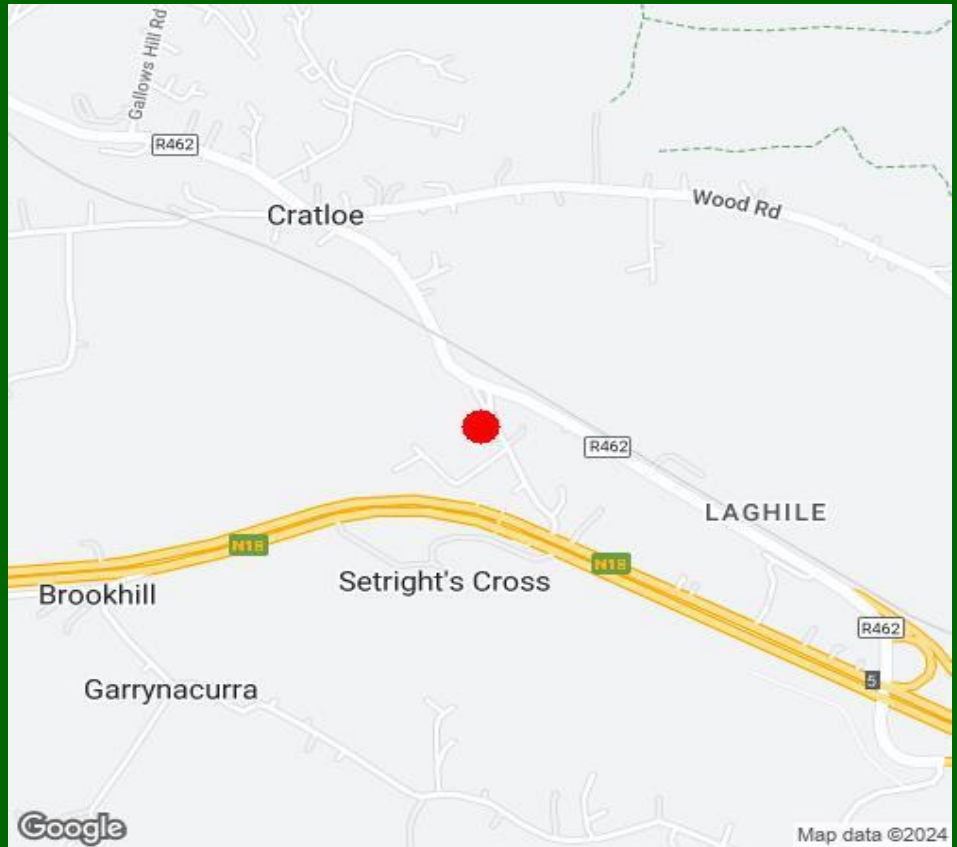
Fully tiled. Mira shower

2.06m (6'9") x 2.04m (6'8")

Features:

- Oil fired central heating
- Detached garage with toilet
- 2 separate entrances
- Recently repainted internally and externally
- Very pleasant site
- Wonderful local hiking and cycling paths
- Public transport nearby
- Sensibly priced ideal for first time buyers or right sizers





Property Directions:

Enter eircode V95P6D8 to your mobile device to direct you straight to this property.

Agent Information:

Contact :- John O' Connell Mobile :- 087-6470746

Email :- johnoconnell@gvm.ie

Disclaimer

These particulars do not form any contract and are for guidance purposes only. Computer generated images, maps and plans are not drawn to scale and measurements are approximate and for guidance only. Intending purchasers must satisfy themselves as to the accuracy of detail given to them verbally or as part of this brochure. Such information is given in good faith and believed to be correct. However neither the vendor nor their agents shall be held liable for any inaccuracies therein.

Limerick Office

25-26 Glentworth St,
Co. Limerick,
V94WE12

Phone: (061)413522

Email: limerick@gvm.ie

Kilmallock Office

Head Office,
Railway Road,
Kilmallock,
Co. Limerick

Phone: (063)98555

Email:
kilmallock@gvm.ie

Tullamore Office

GVM Mart,
Arden Road,
Tullamore,
Co. Offaly

Phone: (057)9321196

Email:
tullamoreproperty@gvm.ie



PSRA Number: 002030