

Modern one bedroom apartment
located close to Phoenix Park.

49 Hibernia, Heuston South Quarter, Dublin 8

savills



Modern one bedroom apartment located close to Phoenix Park.

49 Hibernia, Heuston South Quarter, Dublin 8



Modern one bedroom apartment located close to Phoenix Park.

49 Hibernia, Heuston South Quarter, Dublin 8



About this property

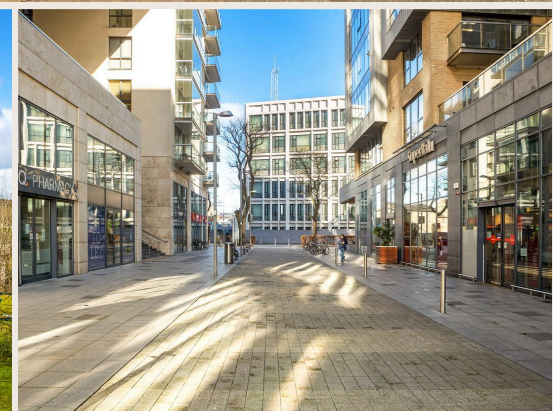
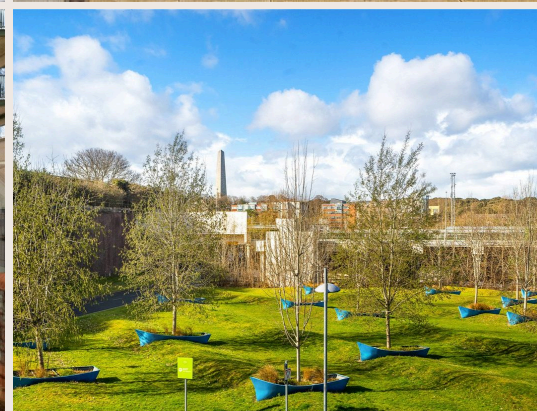
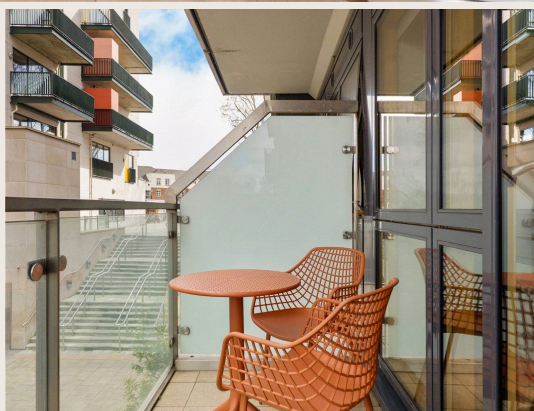
49 Hibernia is an impressive one-bedroom apartment, situated on the first floor of Heuston South Quarter, a highly sought-after development. Ideally situated at the gateway to Dublin city centre, this impressive development seamlessly combines modern design and high-quality finishes within an urban community setting. It is conveniently located close to Phoenix Park, Heuston train station and Dublin city centre.

The apartment features a spacious and light-filled interior, with an open-plan living and dining area and fully equipped kitchenette. Accessed off the living room is a south-west facing balcony which overlooks The Royal Hospital Kilmainham. The generous double bedroom enjoys an abundance of natural light with a large window which frames the iconic landmark. It includes a double wardrobe. Additional features include a spacious hallway, a utility room, and a main bathroom. The interiors are finished to the highest standards, featuring thoughtfully designed built-in storage. In all the accommodation extends to approximately 46 sq m/495 sq ft. A full layout of the accommodation is shown on the adjoining floorplans.



Modern one bedroom apartment
located close to Phoenix Park.

49 Hibernia, Heuston South Quarter, Dublin 8



Modern one bedroom apartment located close to Phoenix Park.

49 Hibernia, Heuston South Quarter, Dublin 8

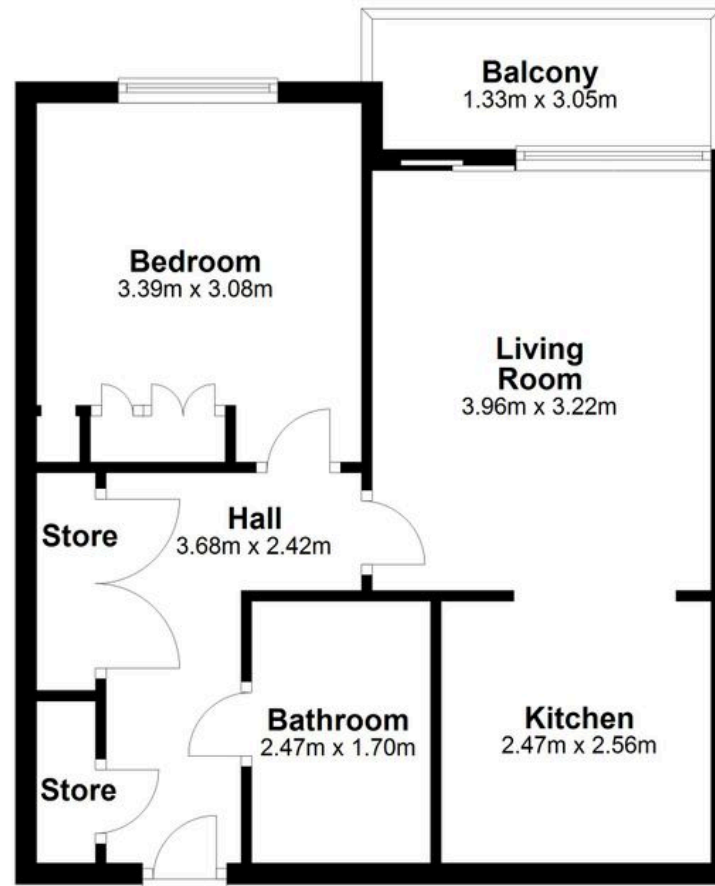


Plans



495 sq ft

Floor Plan



49 The Hibernia Building. HSO

Modern one bedroom apartment
located close to Phoenix Park.

49 Hibernia, Heuston South Quarter, Dublin 8

savills



Local Area

Heuston South Quarter, located in Dublin 8, is a historic and culturally rich area just south of the River Liffey and west of Dublin's city centre. This vibrant district is renowned for its significant landmarks, including Kilmainham Gaol, the Irish Museum of Modern Art (IMMA), housed in the stunning 17th-century Royal Hospital Kilmainham and the Phoenix Park. The area is well-served by public transport being located minutes away from Heuston Station which is serviced by National Rail, Luas, Dublin Bus and the Dublin Express to Airport.



Modern one bedroom apartment located close to Phoenix Park.

49 Hibernia, Heuston South Quarter, Dublin 8



Property Details

Key Features

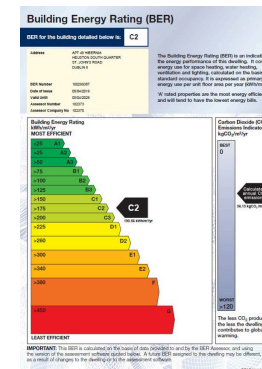
- Modern contemporary first floor apartment
- Walking distance of Phoenix Park
- South-west facing balcony offering views over the gardens in The Royal Hospital Kilmainham
- Located minutes away from Heuston Station which is serviced by National Rail, Luas, Dublin Bus and the Dublin Express to Dublin Airport.
- Close to city centre
- A secure underground car parking space is included

Services & Additional Information

Central district heating system

BER

BER Rating = C2



Modern one bedroom apartment
located close to Phoenix Park.

49 Hibernia, Heuston South Quarter, Dublin 8



Enquire



Rose Lyle

Dublin - Country
086 201 2911
rose.lyle@savills.ie



Maria Lawler

Dublin - Country
086 812 2504
maria.lawler@savills.ie

More Information



[View on website](#)



[View Digital Brochure](#)



[Property Search](#)

Viewing strictly by appointment

Property Ref: DUY250051

Residential & Country

33 Molesworth Street, D02 CP04
+353 (0) 1 618 1300



Important Notice: Savills, its clients and any joint agents give notice that 1: They are not authorised to make or give any representations or warranties in relation to the property either here or elsewhere, either on their own behalf or on behalf of their client or otherwise. They assume no responsibility for any statement that may be made in these particulars. These particulars do not form part of any offer or contract and must not be relied upon as statements or representations of fact. 2: Any areas, measurements or distances are approximate. The text, photographs and plans are for guidance only and are not necessarily comprehensive. It should not be assumed that the property has all necessary planning, building regulation or other consents and Savills have not tested any services, equipment or facilities. Purchasers must satisfy themselves by inspection or otherwise. *powered by* **FluoPro**