


**HENRY O'LEARY**

Email: [property@hol.ie](mailto:property@hol.ie), Tel: 023 88 35959

**AUCTIONEERS &  
REAL ESTATE AGENTS**

[WWW.HOL.IE](http://WWW.HOL.IE)

32 The Moorings, Skibbereen, West Cork, P81 T623



A beautifully presented four-bedroom home set on the peaceful edge of town, where south-facing sunshine, generous living spaces and a private enclosed patio combine to create something rather special.

## Ground Floor

Hallway 6.48m (21'3") x 2.90m (9'6")

Cloakroom 0.84m (2'9") x 0.82m (2'8")

Toilet 1.99m (6'6") x 1.73m (5'8")

Living Room 5.09m (16'8") x 4.02m (13'2")

Kitchen-Dining 6.00m (19'8") x 4.68m (15'4")

Utility 3.00m (9'10") x 1.37m (4'6")

## First Floor

Landing 3.87m (12'8") x 2.19m (7'2")

Bedroom 1 3.57m (11'9") x 2.90m (9'6")

Master Bedroom 3.86m (12'8") x 3.65m (12')

En-suite 2.22m (7'3") x 1.34m (4'5")

Wardrobe 1.34m (4'5") x 0.83m (2'9")

Bedroom 3 3.15m (10'4") x 3.00m (9'10")

Bedroom 4 4.94m (16'2") x 2.90m (9'6")

Family Bathroom 1.99m (6'6") x 1.76m (5'9")



### Kitchen Dining Area

This is a spacious, open-plan room fitted with a range of cream units, tiled flooring and a timber styled worktop. It includes a Leisure Cookmaster cooker, integrated appliances and a built-in bench seating area. Dual aspect windows provide excellent natural light, with direct access to the adjoining utility room and a door to the patio area.



### Master Bedroom

The master bedroom is a spacious and well-proportioned room positioned to the front of the house, enjoying a bright aspect and excellent natural light. It includes a walk-in wardrobe and a private ensuite, with ample space for additional furnishings while maintaining a comfortable and uncluttered layout.



Set gently on the edge of Skibbereen, where the town softens into open countryside and the River Ilen winds quietly through the valley, this beautifully presented four-bedroom home offers a life of ease, light and quiet contentment. Positioned within a mature cul-de-sac and enjoying a prized south-facing aspect, it looks out onto an open green, with the wider town within easy reach just beyond, a pleasant reminder that everything you need is never very far away.

From the moment of arrival, there is a sense of welcome. A natural stone wall frames the approach, softening the boundary and hinting at the care and pride that continues throughout. The house itself is instantly appealing, bright, balanced and reassuringly solid. Inside the entrance hall is warm and inviting, offering a gentle introduction to a home that has been thoughtfully maintained and tastefully styled. The living room is a particularly charming space, centred around a stove that earns its place on a winter's evening, whilst soft natural tones and generous proportions create a room that feels relaxed and cosy whatever the occasion.

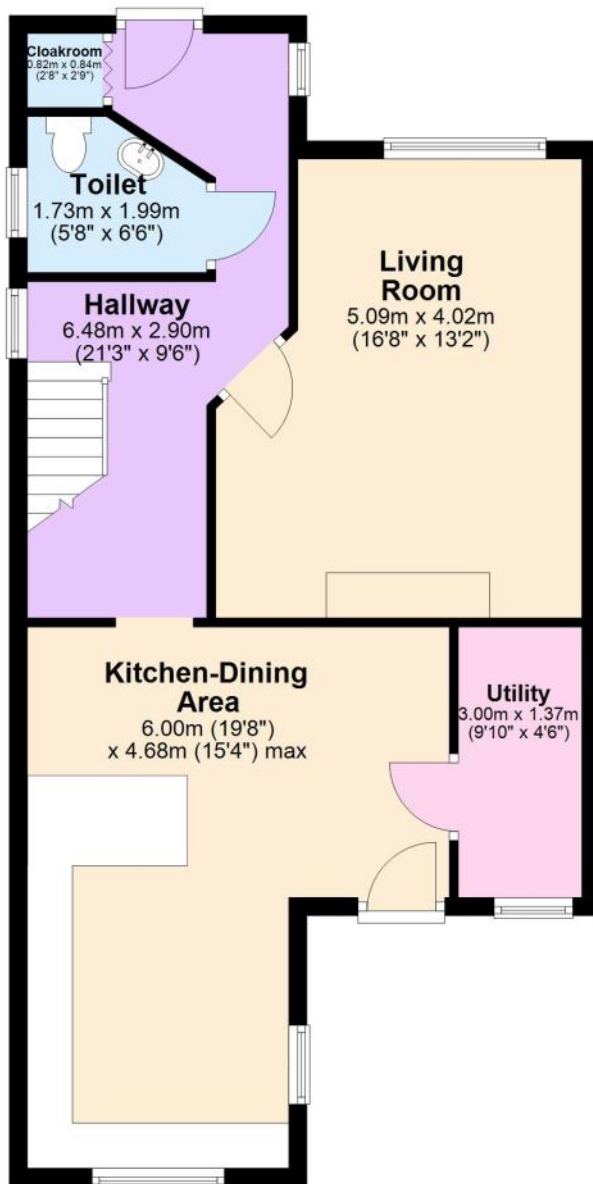
To the rear, the home opens effortlessly into a spacious kitchen and dining area, the true heart of the house. Bathed in light and made for everyday living, the adjoining utility room adds a sensible touch, keeping the rhythms of daily life neatly tucked away. Upstairs, the sense of space continues. Four well-proportioned bedrooms offer flexibility for growing families, visiting guests, or those simply seeking room to breathe. The master bedroom, complete with its own en suite, provides a peaceful retreat, whilst the remaining rooms are bright and comfortable.

Outside, the home reveals one of its most delightful surprises. Tucked discreetly behind a solid side entrance, the rear patio is a private and sheltered haven, fully paved, beautifully enclosed and framed with colourful flower beds. It is a space made for long summer evenings, unhurried morning coffees and lazy afternoons when you have nowhere else to be.

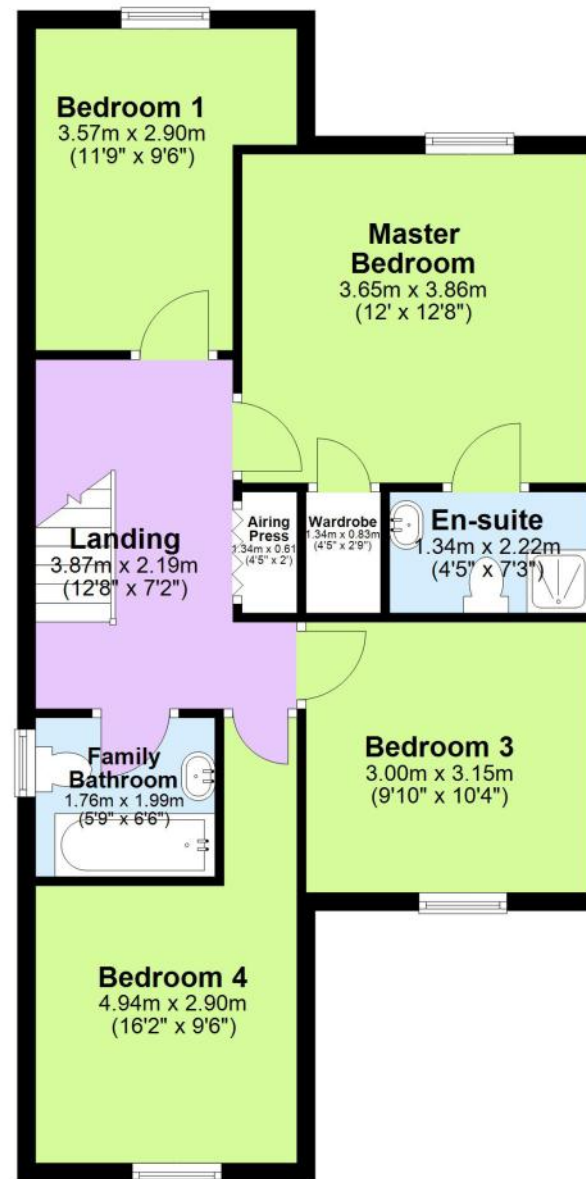
What truly sets this property apart is the balance it strikes. It offers the reassurance of a well-established development, with more generous space both inside and out than many newer homes, whilst remaining within an easy, level walk of the town and close to a fine range of sporting and recreational amenities. Whether a first step onto the property ladder, a move closer to everyday convenience, or a gentle transition to a more relaxed way of living, this home adapts beautifully. With Cork Airport approximately 80km away, Kerry Airport within 120km, and the vibrant towns of Bantry and Clonakilty just 30km distant, the wider world remains easily within reach, yet here, in this quiet corner of Skibbereen, life feels pleasantly self-contained.



## Ground Floor



## First Floor



No responsibility is taken for any error omission or misunderstanding in these particulars which do not constitute an offer or contract.  
Services and appliances have not been tested and therefore no warranty is offered on their operational condition.

Auctioneers, Estate Agents & Property Consultants

1 Lamb Street, Clonakilty, Co. Cork, Ireland. Tel: 023 88 35959, Fax: 023 8835960

Registration No. 284879, V.A.T. No. E8284879J PSRA Registration No. 001367

