

Meadow Hill – Final Phase

Meadow Hill is the latest development by Redmond Construction who have an excellent reputation for delivering beautiful, high quality and spacious homes at an affordable price. Meadow Hill is located along the Marlton Road in Wicklow with the final phase including 3 bed and 4 bed terraced units. When designing these homes there was an emphasis put on space and movement throughout the process to provide maximum comfort.



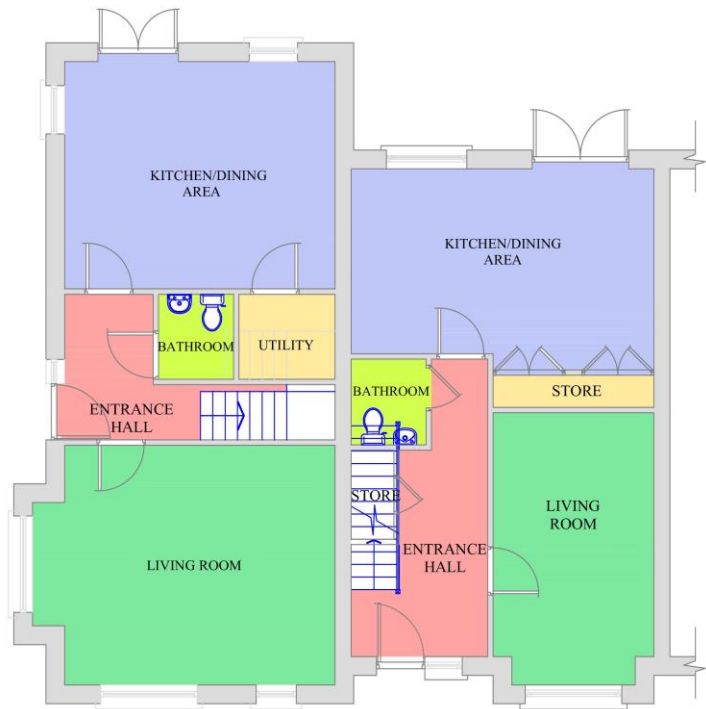
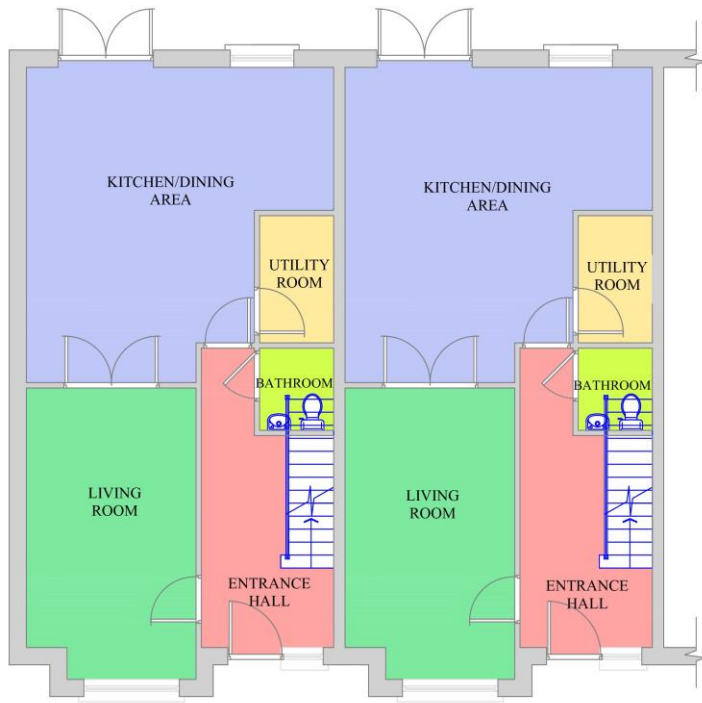
**O'Neill &
Flanagan**

Selling Agents:

O'Neill Flanagan Ltd
Fitzwilliam Sq., Wicklow Town
Co. Wicklow, A67 PX97
0404 66410 / info@oneillflanagan.com

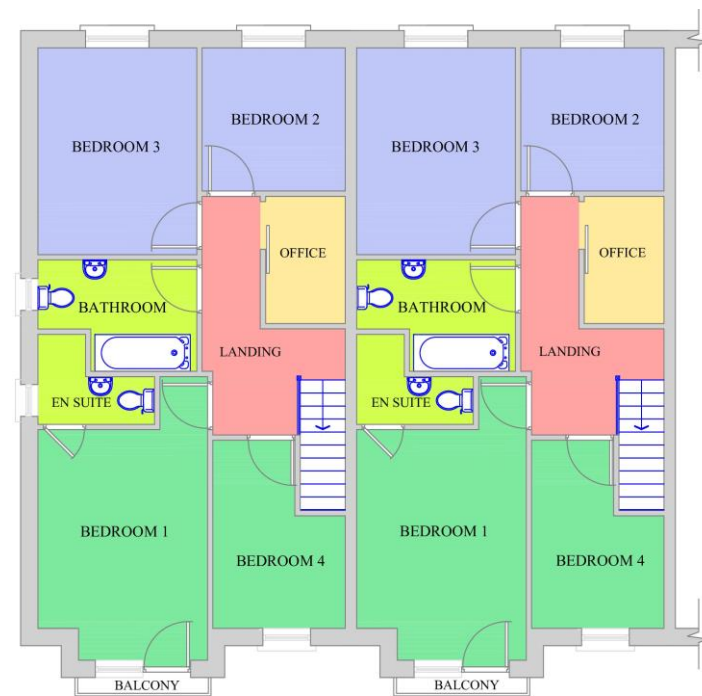
House Type B - 4 Bed Terrace (4 Dwelling)
Units No.100 - 107

House Type C - 3 Bed Terrace (4 Dwelling)
Units No.89 - 95



GROUND FLOOR

GROUND FLOOR



FIRST FLOOR

FIRST FLOOR

House Type B - 4 Bed Terrace (4 Dwelling) Units No.100 - 107



House Type C - 3 Bed Terrace (4 Dwelling) Units No.89 - 95

