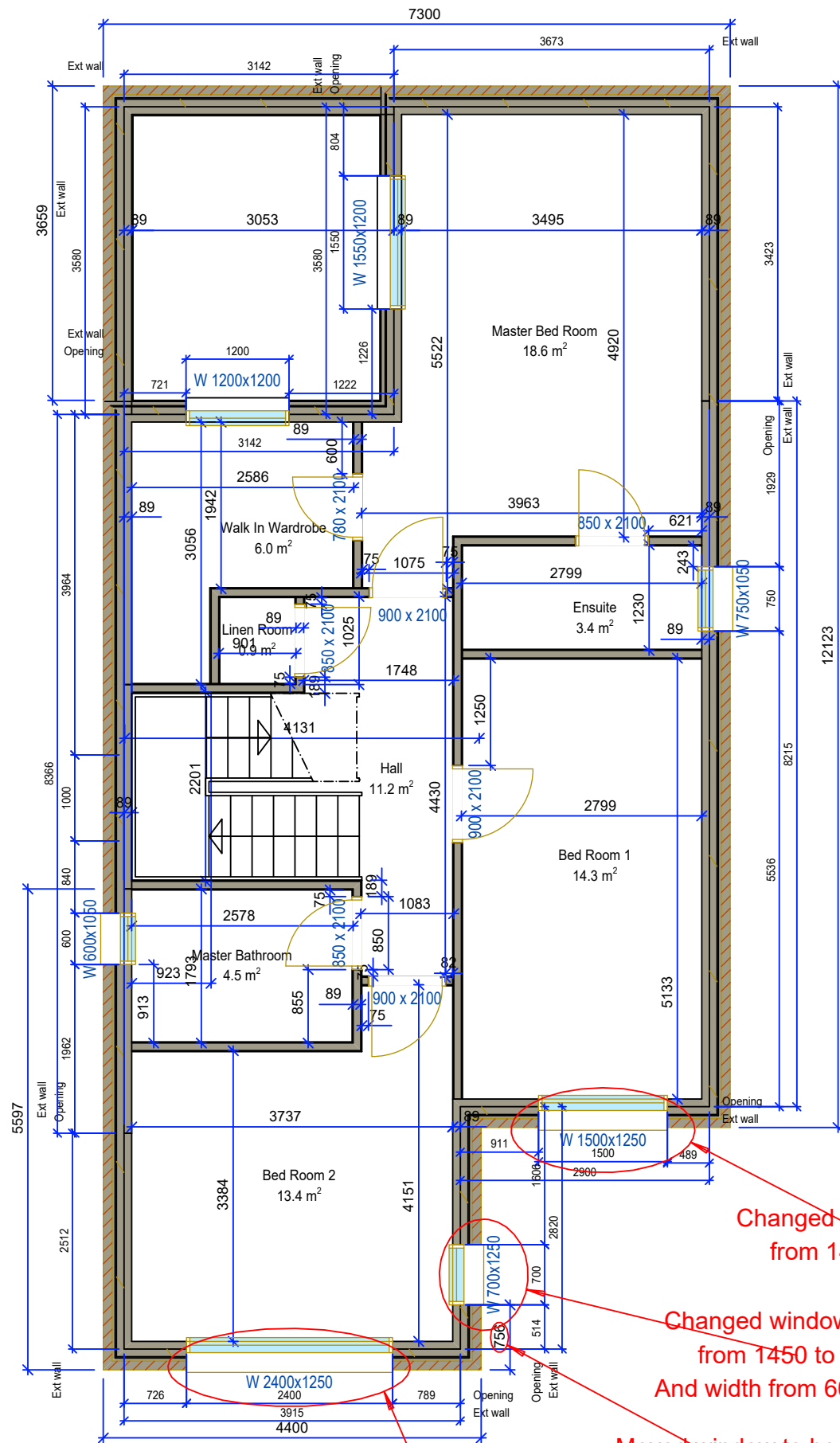


Window Header Height
= 2100



Changed window height
from 1450 to 1250

Changed window height
from 1450 to 1250
And width from 600 to 700

Changed window height
from 1450 to 1250

Moved window to be in line
with ground floor window and
farther away from external corner

- Notes:
- 1 - THESE DRAWINGS ARE THE EXCLUSIVE PROPERTY OF HORIZON OFFSITE SOLUTIONS COPYRIGHT © 2017
 - 2 - DO NOT SCALE FROM PRINTED DRAWINGS, PLEASE USE ONLY WRITTEN DIMENSIONS. WHEN IN DOUBT, ASK OR CHECK THE CAD FILE EXACT DIMENSIONS.
 - 3 - ALL DIMENSIONS TO BE CHECKED ON SITE BY BUILDER BEFORE COMMENCING CONSTRUCTION
 - 4 - ALL MATERIALS AND WORKMANSHIP SHALL FULLY COMPLY WITH ALL RELEVANT CURRENT BRITISH/IRISH STANDARD CODES OF PRACTICE.
 - 5 - HORIZON OFFSITE SOLUTIONS IS NOT RESPONSIBLE OR LIABLE FOR INCORRECT OR INACCURATE SETTING OUT OF BASE. THIS IS THE RESPONSIBILITY OF THE CLIENT AND THE MAIN CONTRACTOR.

REV	DESCRIPTION	DATE
10	Fixed Bedroom 1 + 2 sill heights Moved Bedroom 2 side window to be more than 675mm from brick corner Changed width of bedroom 2 window to match ground floor window below	01/05/2019
9	D	25/04/2019

Horizon Offsite Ltd,
Cahir Business Park
Cahir, Co. Tipperary, Ireland
email: ccurtin@horizonos.ie
Web: www.horizonos.ie



CLIENT	Jerry O Sullivan	
PROJECT	Revington-B	
TITLE	Revington-B	
SCALE	1:35	DRG. No. 002
DATE	01.05.2019	PLOT FILE
DRAWN BY	C.C.	1st Floor Plan
		A1-L