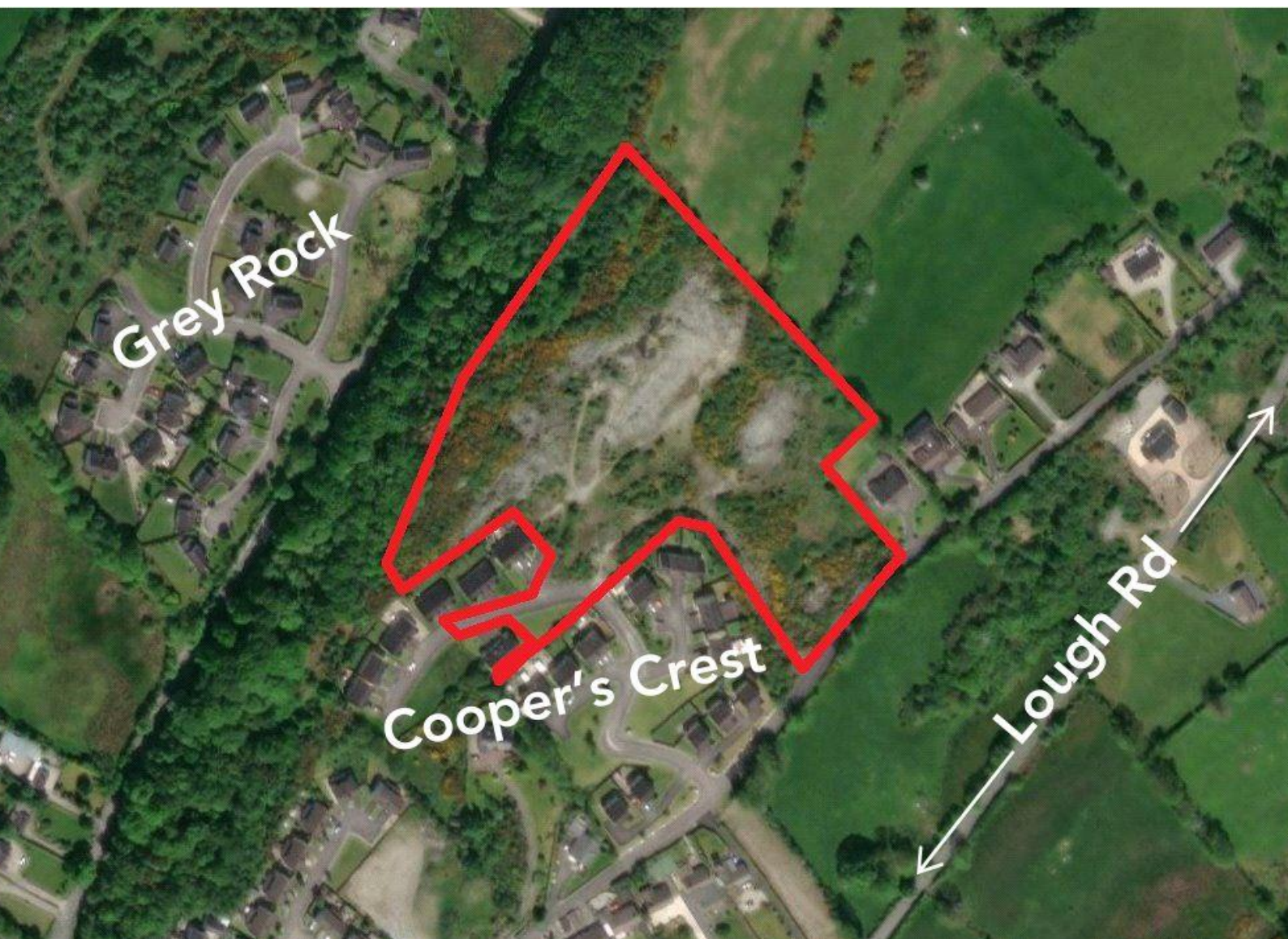


# For Sale

Price on Application



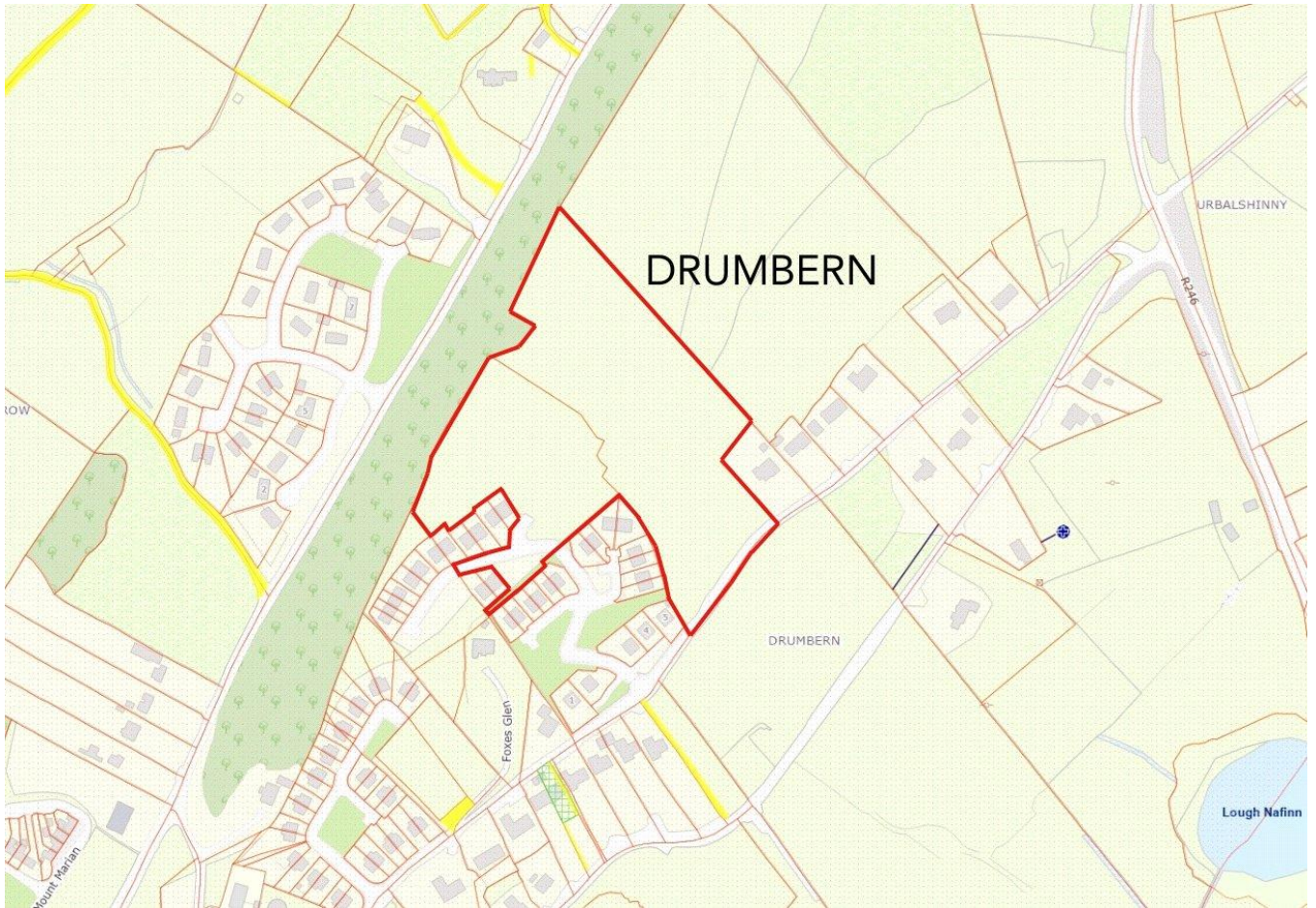
c. 3.64 Ha (9 Acres)

Drumbern, Milford, Co Donegal.

*Unconditional offers to be submitted in writing*

*By 5pm on Wednesday 16<sup>th</sup> April 2025*





Two plots of land located adjacent to the Coopers Crest development at Drumbern in Milford and contained in Folios DL38234 and DL59494F extending, in total, to 3.64 Ha (9 Acres) approx. The land is located within the Milford settlement boundary under Donegal County Council Development Plan 2024 - 2030 offering development potential (subject to planning permission being granted). VAT (if applicable) will be payable in addition to the purchase price at the prevailing rate (currently 13.50%).

**Unconditional offers for the purchase of this land should be submitted in writing to the offices of Rainey Estate Agents by 5pm on Wednesday 16<sup>th</sup> April 2025. All offers should be accompanied with proof of funds to complete the transaction.**

#### Directions

Approaching Milford from Carrigart direction on R245 turn left towards Coopers Road at the brow of the hill immediately before you enter the town. Bear right almost immediately at the "Y" junction into Coopers Road and continue along for a short distance. The land is located immediately after Coopers Crest development on the left and is easily identifiable by our for sale board.









#### NEGOTIATOR

Ms Kiara Rainey  
Rainey Estate Agents  
45 Port Road, Letterkenny,  
Co Donegal, F92 X863  
T: 074 912 2211  
E: [property@raineyproperty.ie](mailto:property@raineyproperty.ie)

#### SOLICITOR

Mr Tom Wylie  
Babington Solicitors, Derry  
9 Limavady Road  
Derry  
BT47 6JU  
T: 04871310600

#### VIEWING DETAILS

Please contact us to make an appointment. Our Office is open Monday to Friday 9am to 5:30 pm. Viewings outside of these hours and Saturdays by appointment. We are closed for lunch between 1pm and 2pm.

**CONDITIONS TO BE NOTED:** A full copy of our general brochure conditions can be requested from our office. We recommend that you familiarise yourself with these general conditions. While care has been taken to ensure that information contained in our publications is correct at the time of publication, changes in circumstances after the time of publication may affect on the accuracy of this.

Ordnance Survey Ireland Licence No. CYAL 50293602.

PSRA Registration No. 004598