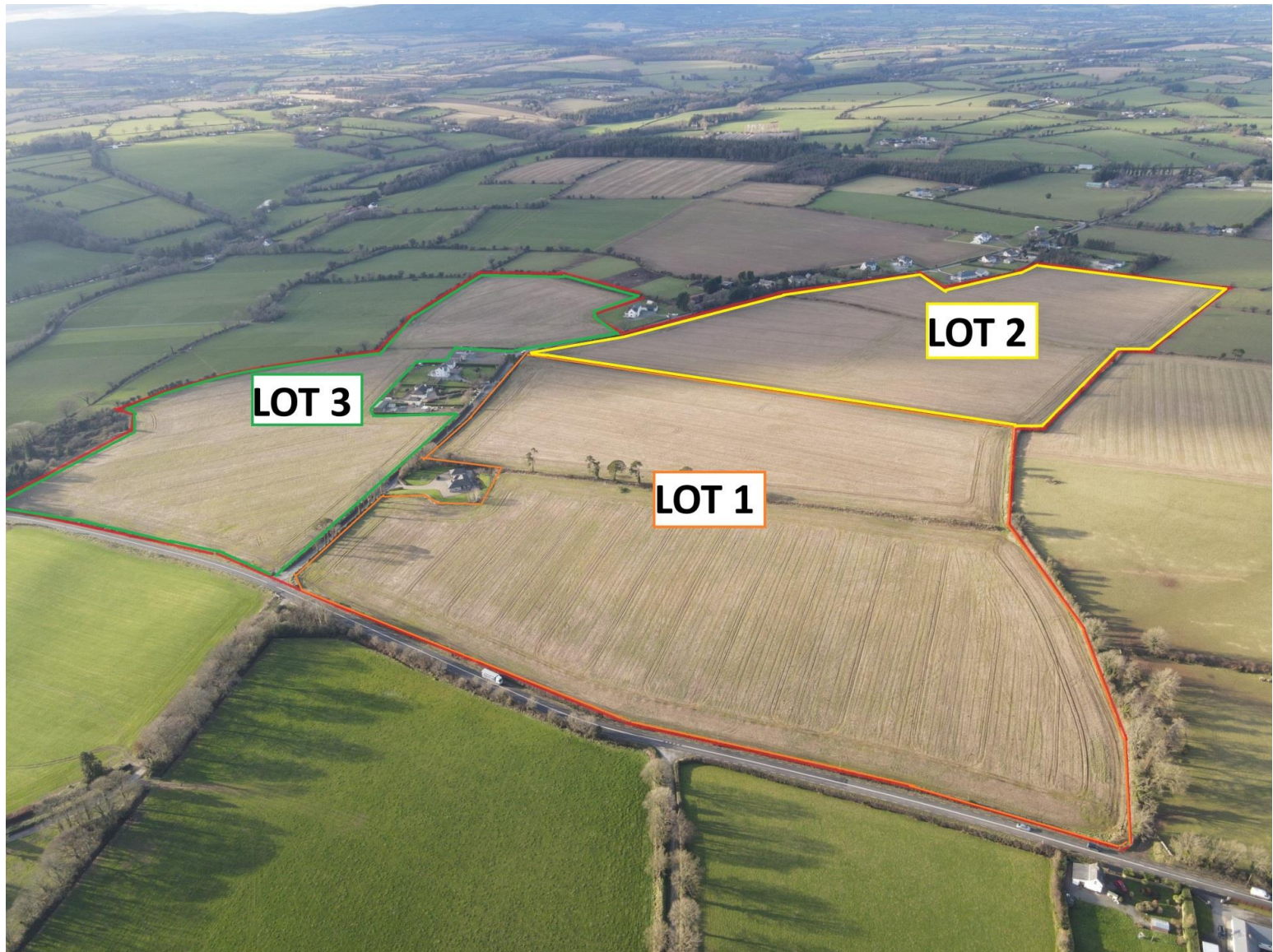


For Sale

Price on Application

**Sherry
FitzGerald**
O'Leary Kinsella



Beaufield, Moneytucker,
Enniscorthy, Co. Wexford

sherryfitz.ie

Valuable non-residential farm holding of c. 37.4 hectares (c .92.4 acres) in one or three lots, for sale by Public Auction on Thursday 20th March 2025 at 3pm in our Gorey Auction Rooms and Online.

Lot 1: c.13.056ha/c.32.26acres.

Lot 2: c.13.238ha/c.32.71acres

Lot 3: 11.108ha/c.27.45acres

Lot 4: The Entire c.37.402ha/c.92.42acres

All lots have excellent road frontage and are of top quality "Clonroche soil series" arable land. The property has been very well maintained and is presented in excellent heart and condition. Lot 1 and Lot 3 have road frontage onto the main Enniscorthy to new Ross road as well as the Courtnacuddy road, while Lot 2 has excellent road frontage onto the Courtnacuddy road. This farm presents a rare opportunity to acquire absolutely top quality arable Wexford land in Lot sizes varying from 27.45 to 92.42 acres. A dream farm!

BER EXEMPT



NEGOTIATOR

James Kinsella
Sherry FitzGerald O'Leary
Kinsella
Tara View, Esmonde Street,
Gorey, Co Wexford
T: 053 9430088
E: info@olearykinsella.com

SOLICITOR

Ensor O'Connor Solicitors
4 Court Street
Enniscorthy
Co. Wexford
Y21 K2A0

sherryfitz.ie

CONDITIONS TO BE NOTED: A full copy of our general brochure conditions can be viewed on our website at <http://www.sherryfitz.ie/terms>, or can be requested from your local Sherry FitzGerald office. We strongly recommend that you familiarise yourself with these general conditions. While care has been taken to ensure that information contained in Sherry FitzGerald publications is correct at the time of publication, changes in circumstances after the time of publication may impact on the accuracy of this. PSRA Registration No. 001510