

# For Sale

Asking Price: €695,000

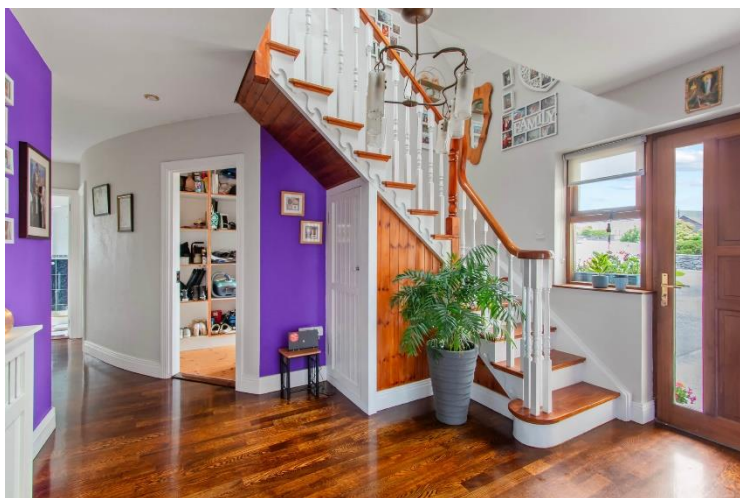
**Sherry  
FitzGerald**  
O'Neill



Ardgort, 3 Ard Cleire, Schull, Co Cork.  
P81 VY58

BER B3

[sherryfitz.ie](https://sherryfitz.ie)



Stunning four-bedroom detached home which combines pristine presentation with an abundance of space, light, and warmth within easy walking distance of Schull village and harbour. The property has a wonderful flow and a southwest-facing orientation that ensures the living spaces are bathed in sunshine throughout the day. From the rear of the property, there are sea views of Schull Harbour and the surrounding islands, enhancing the home's unique coastal charm.

A welcoming, spacious living room creates a perfect first impression. To the rear lies the heart of the home, a modern kitchen and dining space with utility room off, opening onto a beautifully bright sunroom. From here, doors lead directly to the garden, seamlessly blending indoor and outdoor living. The ground floor also offers a comfortable bedroom and shower room, ideal for guests or flexible family living. The storage room on this level could also be used as a home office, study or fifth bedroom, providing valuable versatility. Upstairs, there are three spacious double bedrooms including the principal bedroom with ensuite, complemented by a recently upgraded family bathroom.

The gardens are a real feature of this home. To the rear, they are fully landscaped with mature planting, hedging, and shrubs, while the paved patio off the sunroom enjoys the perfect southwest aspect, a true suntrap for relaxing afternoons and evenings. From the garden, there are sweeping views across Schull Harbour, with its ever-changing seascape dotted with sailing boats and out towards the surrounding islands. It's a tranquil, coastal backdrop that makes the outdoor space as inviting as the interior. To the front, a gated driveway framed by a handsome stone wall offers an impressive entrance with ample parking.





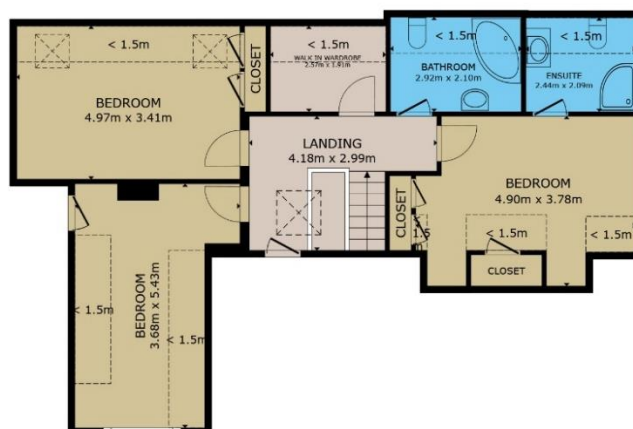


### Location

Located within easy walking distance of the picturesque village of Schull, this home places you at the heart of one of West Cork's most desirable coastal communities. Schull is renowned for its vibrant atmosphere, excellent restaurants and bars, welcoming schools, and access to some of Ireland's finest sailing waters. The nearby market town of Skibbereen is less than 30 minutes away, while neighbouring villages including Ballydehob, Goleen, Durrus, Ahakista, and Kilcrohane offer further opportunities to explore the beauty and charm of the Mizen Peninsula. Cork City and Cork Airport are within approximately 75 minutes' drive, making this idyllic coastal home both accessible and well connected.



FIRST FLOOR



SECOND FLOOR

GROSS INTERNAL AREA

TOTAL : 208.62 m<sup>2</sup>

Whilst every attempt has been made to ensure the accuracy of the floor plan contained here, measurements of doors, windows, rooms and any other items are approximate and no responsibility is taken for any error, omission, or misstatement. This plan is for illustrative purposes only and should be used as such by any prospective purchaser.



#### NEGOTIATOR

Niamh Moloney  
Sherry FitzGerald O'Neill  
37 North Street, Skibbereen,  
Co Cork  
T: 028 21404  
E: [info@sfoneill.ie](mailto:info@sfoneill.ie)

#### VIEWINGS

Strictly By Appointment Only

#### ENERGY RATING

BER: B3  
Cert No.: 118660737  
EPI: 149.57 kWh/m<sup>2</sup>/yr

[sherryfitz.ie](http://sherryfitz.ie)  
[sfoneill.ie](http://sfoneill.ie)  
[myhome.ie](http://myhome.ie)  
[daft.ie](http://daft.ie)  
[propgoluxury.com](http://propgoluxury.com)

**CONDITIONS TO BE NOTED:** A full copy of our general brochure conditions can be viewed on our website at <http://www.sherryfitz.ie/terms>, or can be requested from your local Sherry FitzGerald office. We strongly recommend that you familiarise yourself with these general conditions. While care has been taken to ensure that information contained in Sherry FitzGerald publications is correct at the time of publication, changes in circumstances after the time of publication may impact on the accuracy of this. PSRA Registration No. 004158