

Beautifully restored period home in the
heart of West Cork on 5.4 acs

Lawn House, West End, Drimoleague, Co Cork P47K594

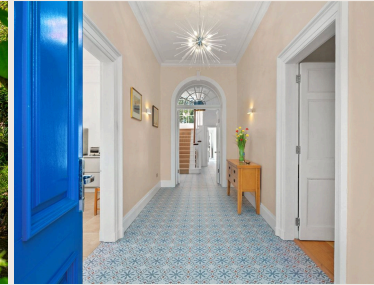
savills



Beautifully restored period home in the heart of West Cork on 5.4 acs

Lawn House, West End, Drimoleague, Co Cork P47K594

savills



Beautifully restored period home in the heart of West Cork on 5.4 acs

Lawn House, West End, Drimoleague, Co Cork P47K594



About this property

Savills are delighted to present Lawn House, set on the edge of a vibrant West Cork community and nestled on 2.1 hectares (5.3 acres) of beautiful grounds. This stunning 4/5-bedroom period home offers the rare opportunity to enjoy the serenity of the countryside while remaining within the charming village of Drimoleague. Tastefully renovated to the highest standard, this exceptional residence marries classic architecture with contemporary luxury, making it an ideal family home or countryside retreat.

A perfect Georgian entrance with terrazo tiled floor and fanlight leads to the elegant ground floor dual aspect living spaces in multiple reception rooms such as drawing room, family sitting room and versatile garden/reading room with access to rear, together with full guest shower room and spacious utility room. The fully fitted bespoke kitchen / dining room features a large quartz-topped island, Rangemaster 6-ring cooker and Kettle tap, perfect for everyday living and entertaining with access to the Garden. On the first floor, off the spacious landing, you will access four large bright bedrooms, all ensuite while the study/5th bedroom, dressing room and hotpress are all at half landing level.



Beautifully restored period home in the heart of West Cork on 5.4 acs

Lawn House, West End, Drimoleague, Co Cork P47K594



Property Details

The extensive grounds are surrounded by trees with the River Ruagagh runs through the property close to the northern boundary of the ensuring maximum privacy for this beautiful home though it is accessed directly from main street Drimoleague through a pillared entrance.

The beautiful woodland is a mix of mature deciduous trees perfectly protecting the meadows and lawns that directly surround the property. There is a detached garage to the rear with ample space to build further outbuildings.

This is a unique opportunity to acquire a beautifully restored period country home where the grounds are entirely private and approached via a long driveway from the gated entrance located just off the main street of the village.

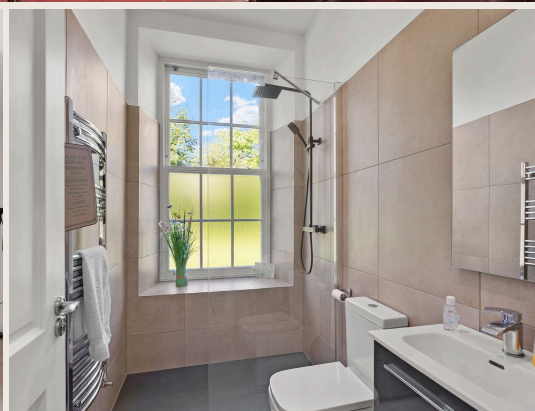
This property has been completely renovated since its purchase in 2018 which included complete rewiring, reroofing, replumbing, reflooring and all windows have been replaced. There is a double story building to the back of the house used for storage.



Beautifully restored period home in the heart of West Cork on 5.4 acs

Lawn House, West End, Drimoleague, Co Cork P47K594

savills



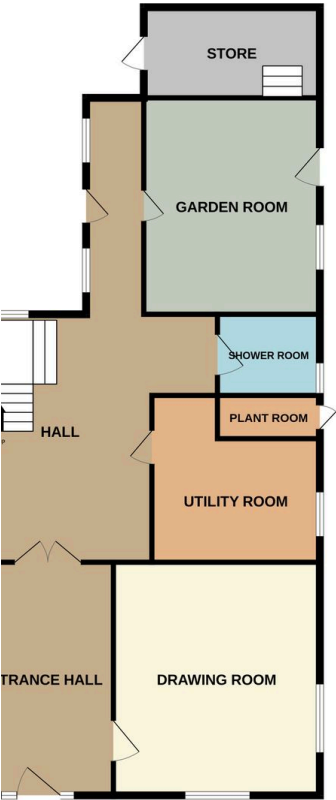
Beautifully restored period home in the heart of West Cork on 5.4 acs

Lawn House, West End, Drimoleague, Co Cork P47K594



Plans

D FLOOR



1ST FLOOR



Beautifully restored period home in the heart of West Cork on 5.4 acs

Lawn House, West End, Drimoleague, Co Cork P47K594

savills



Local Area

Drimoleague, in the heart of West Cork, is a vibrant village full of charm and natural beauty. Ideally located between Bantry, Skibbereen, and Dunmanway, it offers rural peace with easy access to urban centres. The village has a supermarket, café, pubs, post office, school, church, and sports facilities. Community spirit runs high, with regular events and markets. The N71 links to nearby towns in 15 minutes, while Cork City and the airport are just 70 minutes away.



Beautifully restored period home in the heart of West Cork on 5.4 acs

Lawn House, West End, Drimoleague, Co Cork P47K594



Property Details

Key Features

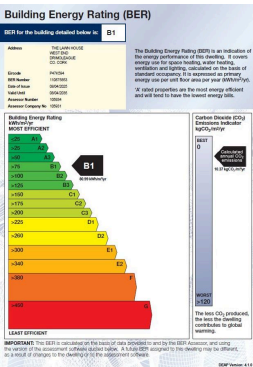
- Elegant Georgian 4/5 bed Country Home
- c.315 sq m (3390 sq ft)
- On 2.1 ha (5.4 acs) of meadow and woodland
- Completely restored and renovated in 2018/2019
- Rewiring, replumbing, reroofing, reflooring
- All windows replaced
- Georgian Double Fanlit Entrance Hall
- Engineered oak floors in two living rooms
- Gated Georgian entrance with driveway
- Fully tiled Bathrooms

Services & Additional Information

- Electric Heatpump Air to Water Heating
- Underfloor Floor on Ground Floor,
- Radiators upstairs
- Two multi fuel stoves
- Double Glazed Windows throughout
- Biocycle Treatment Plant
- Broadband Available

BER

BER Rating = N/A



Local Authority
Cork County Council

Tenure
Freehold

Beautifully restored period home in the heart of West Cork on 5.4 acs

Lawn House, West End, Drimoleague, Co Cork P47K594



Enquire



Catherine McAuliffe

Cork

+353 (0) 87 823 0451

catherine.mcauliffe@savills.ie

More Information



View on website



View Digital Brochure



Property Search

Viewing strictly by appointment

Property Ref: CKK250142



Important Notice: Savills, its clients and any joint agents give notice that 1: They are not authorised to make or give any representations or warranties in relation to the property either here or elsewhere, either on their own behalf or on behalf of their client or otherwise. They assume no responsibility for any statement that may be made in these particulars. These particulars do not form part of any offer or contract and must not be relied upon as statements or representations of fact. 2: Any areas, measurements or distances are approximate. The text, photographs and plans are for guidance only and are not necessarily comprehensive. It should not be assumed that the property has all necessary planning, building regulation or other consents and Savills have not tested any services, equipment or facilities. Purchasers must satisfy themselves by inspection or otherwise. *powered by* **FluoPro**