

Elevated bungalow with panoramic views in a prime country location.

St. Exupery, Killegar, Enniskerry, Co. Wicklow, A98 VP46

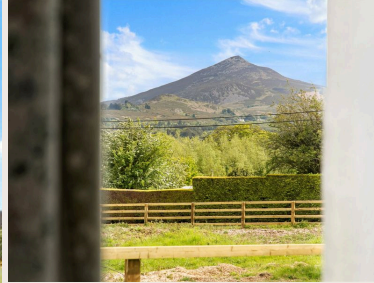
savills



Elevated bungalow with panoramic views in a prime country location.

St. Exupery, Killegar, Enniskerry, Co. Wicklow, A98 VP46

savills



Elevated bungalow with panoramic views in a prime country location.

St. Exupery, Killegar, Enniskerry, Co. Wicklow, A98 VP46



About this property

St. Exupéry is a detached bungalow dating from circa 1965, set in an elevated position with sweeping views of the Great and Little Sugar Loaf and the Irish Sea beyond. Located on a quiet road on the Dublin-Wicklow border, the property enjoys a peaceful rural setting between Enniskerry and Kilternan, while remaining within easy reach of Dublin.

Extending to approximately 147 sq m (1,582 sq ft), the accommodation is arranged at ground floor level and, while requiring renovation, offers a strong footprint with excellent potential to modernise or extend (subject to planning permission). The layout centres around a bright open-plan kitchen, living and dining area with floor-to-ceiling sliding doors opening onto a south-east facing terrace, perfectly positioned to take in the impressive views. A separate reception room with a wood-burning stove provides additional living space, while further accommodation includes a study, three generous double bedrooms and a family bathroom.

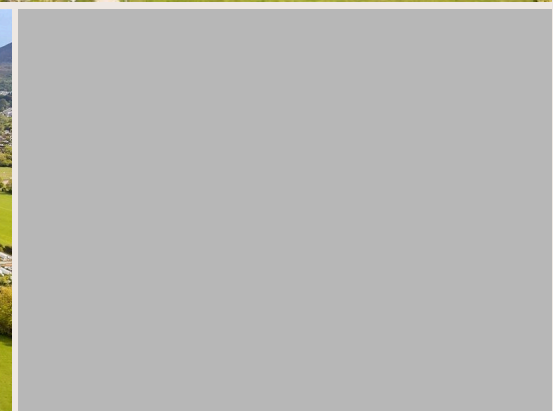
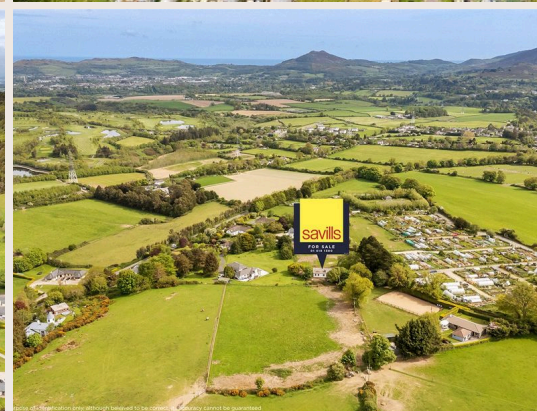
The property is approached via a wooden gate leading to a generous driveway with ample parking, bordered by lawns and mature planting that provide year-round colour and privacy. The gardens are well established with mature trees, hedging and shrubs, creating a sheltered

and tranquil setting.

Set on approximately 3 acres, the grounds include two well-defined paddocks enclosed by post-and-rail fencing. Equestrian facilities comprise two block-built stables, a carport, and a range of lockable sheds. The front paddock offers flexibility for grazing or other uses, while the rear paddock enjoys exceptional 360-degree views, enhancing the sense of space and natural beauty that defines this unique property.

Elevated bungalow with panoramic views in a prime country location.

St. Exupery, Killegar, Enniskerry, Co. Wicklow, A98 VP46



Elevated bungalow with panoramic views in a prime country location.

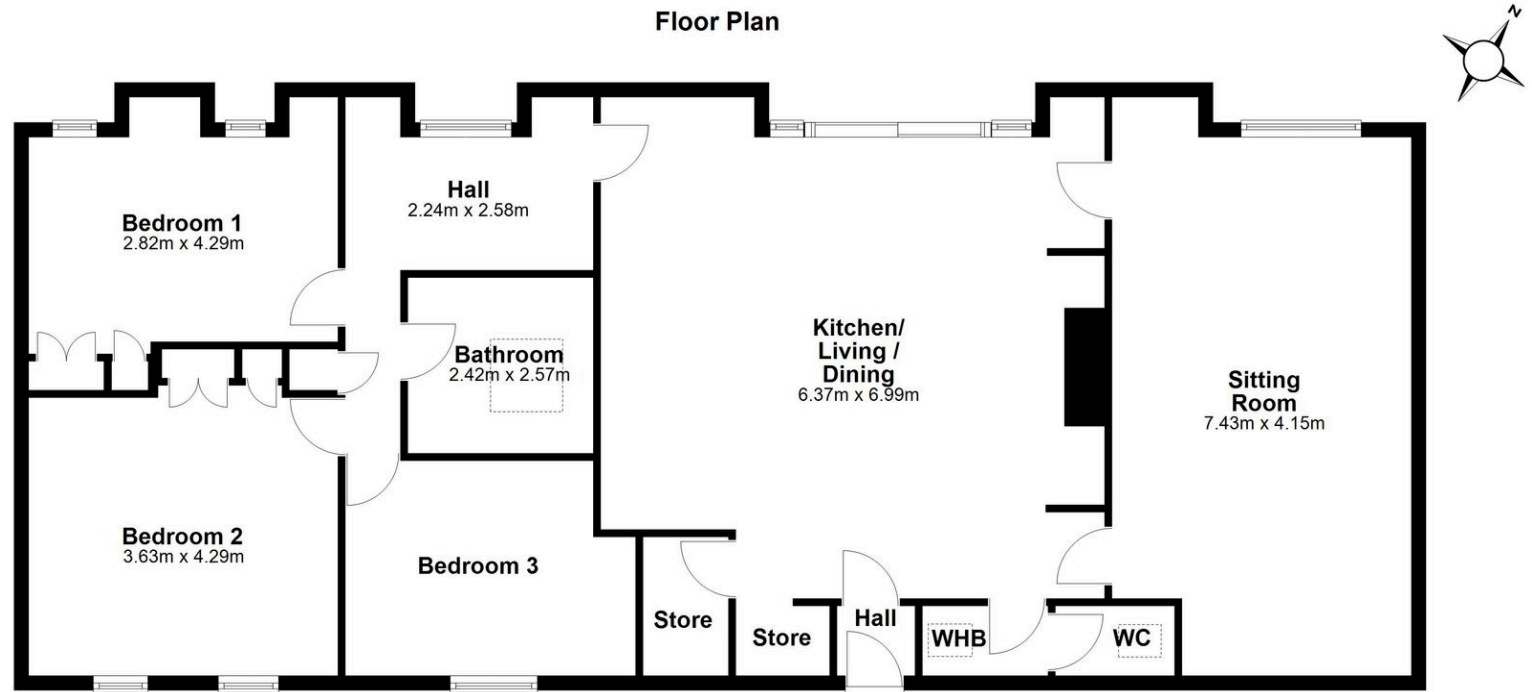
St. Exupery, Killegar, Enniskerry, Co. Wicklow, A98 VP46



Plans

 1,582 sq ft

 3 acres



Total area: approx. 146.7 sq. metres
St. Exupery, Killegar Road, Enniskerry, Co. Wicklow

Elevated bungalow with panoramic views in a prime country location.

St. Exupery, Killegar, Enniskerry, Co. Wicklow, A98 VP46

savills



Local Area

St. Exupéry enjoys a peaceful hillside position with excellent views and privacy. Enniskerry village, less than 3 km away, provides a range of cafés, shops and essential services, while nearby Carrickmines Park Shopping Centre offers extensive retail and leisure options. Equestrian facilities are excellent, with nearby stables, riding schools and access to quiet roads. There is a strong selection of schools in the area. Dublin Airport is approximately 40 km away, and Dublin Bus Route 44 provides access to the city.



Elevated bungalow with panoramic views in a prime country location.

St. Exupery, Killegar, Enniskerry, Co. Wicklow, A98 VP46



Enquire



Orla FitzGerald

Ireland - Country

016181747

orla.fitzgerald@savills.ie

More Information



[View on website](#)



[View Digital Brochure](#)



[Property Search](#)

Viewing strictly by appointment

Property Ref: DUY260079

Residential & Country

33 Molesworth Street, D02 CP04

+353 (0) 1 618 1300



Important Notice: Savills, its clients and any joint agents give notice that 1: They are not authorised to make or give any representations or warranties in relation to the property either here or elsewhere, either on their own behalf or on behalf of their client or otherwise. They assume no responsibility for any statement that may be made in these particulars. These particulars do not form part of any offer or contract and must not be relied upon as statements or representations of fact. 2: Any areas, measurements or distances are approximate. The text, photographs and plans are for guidance only and are not necessarily comprehensive. It should not be assumed that the property has all necessary planning, building regulation or other consents and Savills have not tested any services, equipment or facilities. Purchasers must satisfy themselves by inspection or otherwise. *powered by* **FluoPro**