

# Stunning 4 bedroom period property overlooking the River Lee

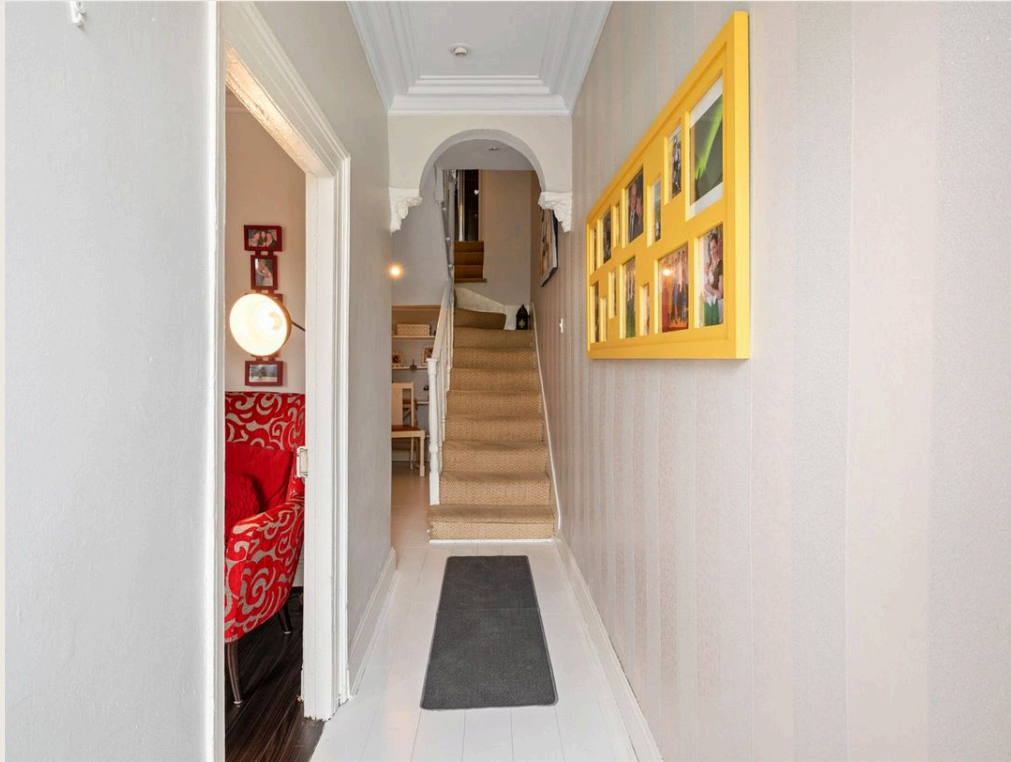
2 Wellington Place, Sundays Well Road, Cork, T23PY2W

savills



# Stunning 4 bedroom period property overlooking the River Lee

2 Wellington Place, Sundays Well Road, Cork, T23PY2W



# Stunning 4 bedroom period property overlooking the River Lee

2 Wellington Place, Sundays Well Road, Cork, T23PY2W



## About this property

Savills is delighted to offer to market this stunning terraced house in the highly sought-after area of Sunday's Well, Cork City. Nestled on an elevated position, this exquisite property offers captivating views of the River Lee, providing a serene backdrop to everyday living.

This terraced house is a testament to timeless elegance, boasting a range of period features that add character and charm. High ceilings, original fireplaces, and intricate mouldings blend seamlessly with contemporary finishes to create a home that is both stylish and comfortable. The ground floor welcomes you with a thoughtfully designed open-plan kitchen, living, and dining area. This spacious and inviting space is perfect for both daily living and entertaining, with double doors that lead out to the front garden's south-facing patio. Here, you can bask in the sunlight while enjoying your morning coffee or hosting a summer barbecue in the delightful outdoor space.

Ascending to the return floor, you pass a well-appointed bathroom before reaching the first floor, where two bedrooms await. The front-facing bedroom is particularly impressive, offering ample space and sweeping views of the River Lee. This room is versatile, easily serving as

a separate living room, perfect for relaxing while soaking in the scenic surroundings.

The second floor continues to impress with two more bedrooms, with the front-facing room again boasting those superb views that make this property truly special. Each room is designed with comfort in mind, ensuring that every inch of this home is utilised to its fullest potential.

This wonderful home comes with gardens front and rear. The front garden is south facing and the perfect sun trap for sitting out. At the rear of the property, a set of steps leads you to a tiered garden, where you can continue to enjoy the outstanding views in a more private setting, and has convenient access with Hyde Park Road running to the rear of the property.

# Stunning 4 bedroom period property overlooking the River Lee

2 Wellington Place, Sundays Well Road, Cork, T23PY2W



## More Details

Situated in a prime location, this beautiful home is just a short stroll away from Cork City, ensuring you are never far from the vibrant heart of the city. Enjoy the convenience of having University College Cork (UCC) and Cork University Hospital (CUH) within walking distance, making it an ideal choice for students, healthcare professionals, and families alike. The proximity to these key landmarks means that you'll have all the amenities you need at your fingertips, from top-tier educational institutions to world-class healthcare facilities.

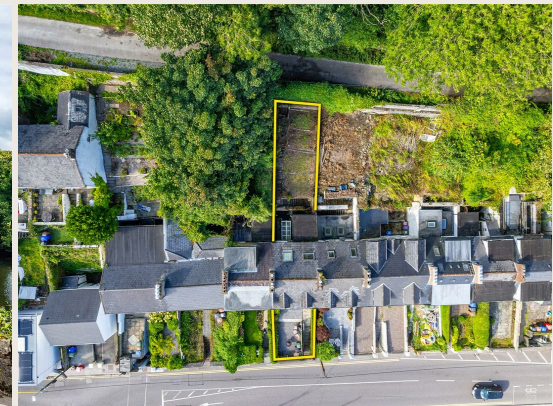
Whether you are a first-time buyer, looking to trade up, relocating, or seeking a lucrative investment opportunity, this home is perfectly suited to meet your needs. The spacious and versatile layout provides ample room for families to grow, while also offering potential for further customization to suit your lifestyle. Investors will appreciate the high rental demand in this desirable location, promising excellent returns.

Don't delay, arrange your private viewing today!



# Stunning 4 bedroom period property overlooking the River Lee

2 Wellington Place, Sundays Well Road, Cork, T23PY2W



# Stunning 4 bedroom period property overlooking the River Lee

2 Wellington Place, Sundays Well Road, Cork, T23PY2W



## Plans

 105 sq m / 1,130



Made with Metropix ©2024

# Stunning 4 bedroom period property overlooking the River Lee

2 Wellington Place, Sundays Well Road, Cork, T23PY2W



## Local Area

Cork City centre - 35 mins walk

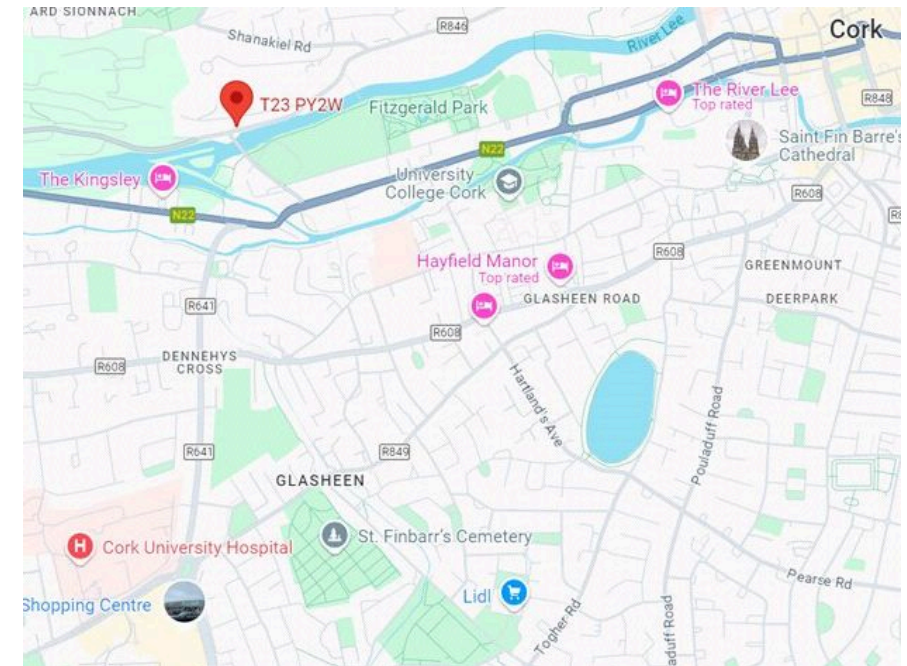
UCC - 15 mins walk

CUH - 30 mins walk

Cork International Airport - 15 mins drive

Bishopstown - 10 mins drive

\*All times are approximate



# Stunning 4 bedroom period property overlooking the River Lee

2 Wellington Place, Sundays Well Road, Cork, T23PY2W



## Property Details

### Key Features

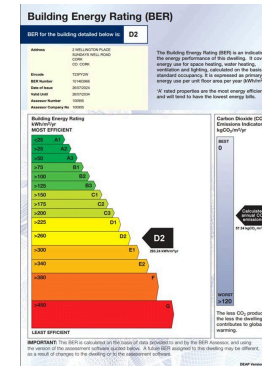
- Stunning 4 bedroom terraced house overlooking the River Lee
- Approx. 105 sq m / 1,130 sq ft
- Immaculate decorative order throughout
- Walking distance of UCC, CUH and Cork City
- Social and essential amenities nearby
- No rental cap in place
- Private gardens front and rear
- On street parking

### Services & Additional Information

- Mains services
- GFCH
- Internet

### BER

BER Rating = N/A



Local Authority  
Cork City Council



# Stunning 4 bedroom period property overlooking the River Lee

2 Wellington Place, Sundays Well Road, Cork, T23PY2W



## Enquire



### Karl O'Reilly

Penrose House, Penrose Dock, Cork City  
+353 (0) 83 878 3944  
karl.oreilly@savills.ie

## More Information



[View on website](#)



[View Digital Brochure](#)



[Property Search](#)

### Viewing strictly by appointment

Property Ref: CKK240461

### Cork

Penrose House, Penrose Dock, T23 V38E  
+353 (0) 21 427 1371



Important Notice: Savills, its clients and any joint agents give notice that 1: They are not authorised to make or give any representations or warranties in relation to the property either here or elsewhere, either on their own behalf or on behalf of their client or otherwise. They assume no responsibility for any statement that may be made in these particulars. These particulars do not form part of any offer or contract and must not be relied upon as statements or representations of fact. 2: Any areas, measurements or distances are approximate. The text, photographs and plans are for guidance only and are not necessarily comprehensive. It should not be assumed that the property has all necessary planning, building regulation or other consents and Savills have not tested any services, equipment or facilities. Purchasers must satisfy themselves by inspection or otherwise. *powered by* **FluoPro**