

Cohalan Downing

**ON THE INSTRUCTIONS OF THE
SELECT VESTRY**

South Abbey, Former National School, Youghal, Co. Cork



021 427 77 17

www.cdacork.com

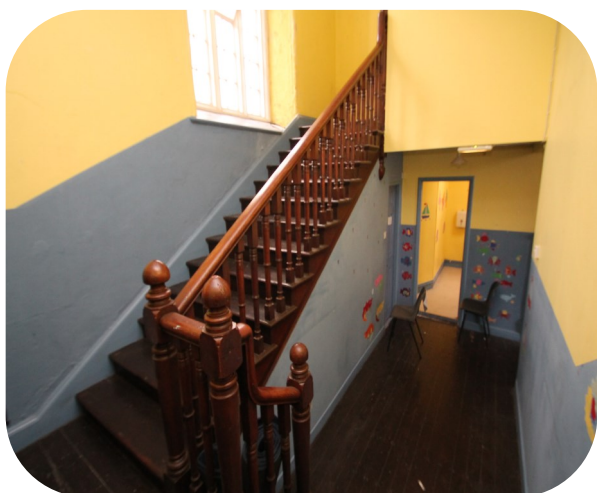
The South Abbey School premises was built in circa 1820 and was operated as a chapel of ease until 1888. From that date it was used as a school premises with a parish hall at the upper level. It continued to function in that form until it closed in 2011.

The premises extends to approximately 4,000 sq. ft. (gross internal) laid out over 2 floors. It occupies a strategic position fronting the R634 Main Cork to Youghal Road.

This is a listed property.

Viewings Strictly By Appointment With Sole Agency

FOR SALE BY PRIVATE TREATY



Location:

The subject property is located on the western side of the R634 which is the main road into Youghal town centre from Cork city. The town centre, the clock tower, is located immediately to the North.

ACCOMMODATION	
GROUND FLOOR	FIRST FLOOR
Toilets at front and rear of building	Meeting Hall
Two Classrooms	Toilets
	Balcony Area
Gross Internal Area 4,000 sq.ft. approx	

Viewing:

Strictly by prior appointment with Malcolm Tyrrell

E-mail: mtyrrell@cdacork.com

Tel.: 087-255 4116

Messrs. Cohalan Downing, for themselves and for the vendors of this property whose agents they are, give notice that:

(i) the particulars are produced in good faith, are set out as a general guide only and do not constitute any part of a contract, (ii) no person in the employment of Messrs. Cohalan Downing has authority to make or give any representation or warranty whatever in relation to the property. LICENCE NO. 001641

Strategic Partners

