

Contemporary one bedroom
apartment with views overlooking
Dublin city.

Heuston South Quarter, St John's Road West, Kilmainham, D08 WY23

savills



Contemporary one bedroom apartment with views overlooking Dublin city.

Heuston South Quarter, St John's Road West, Kilmainham, D08 WY23

savills



Contemporary one bedroom apartment with views overlooking Dublin city.

Heuston South Quarter, St John's Road West, Kilmainham, D08 WY23



About this property

216 Heuston South Quarter is a superb one-bedroom apartment located on an elevated floor of this highly regarded development, enjoying commanding views over Dublin City. This contemporary home is ideally positioned at the edge of the city centre, within the vibrant and sought-after Heuston South Quarter. The location offers unmatched convenience with Heuston Station, Phoenix Park, and a host of local amenities all just minutes away.

The apartment offers a bright, well-proportioned layout with a contemporary open-plan living and dining space, complemented by a fully fitted kitchenette. A standout feature is the east-facing balcony accessed directly from the living area, perfect for enjoying morning light and views across Dublin's skyline.

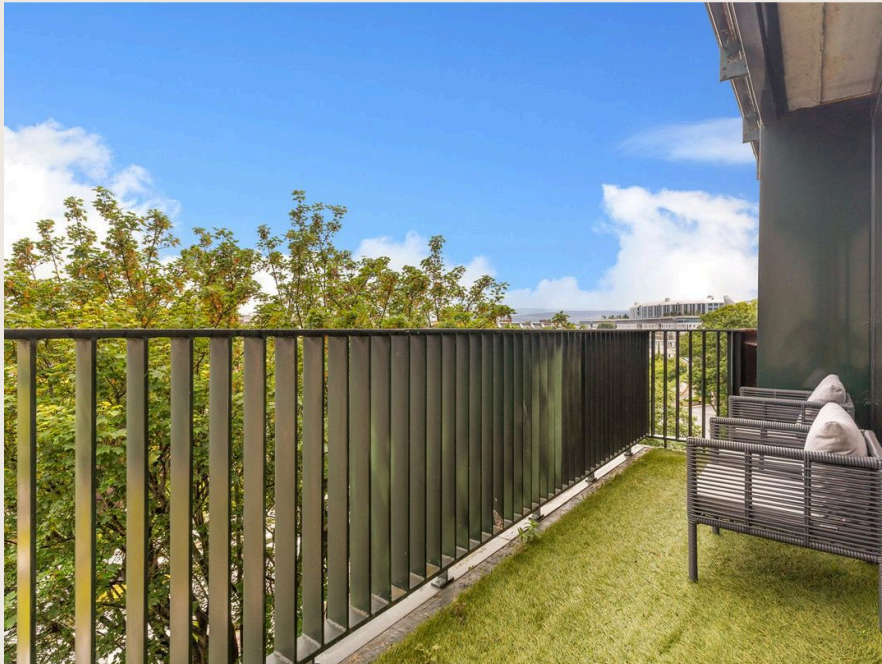
The generous double bedroom is filled with natural light and includes a built-in wardrobe. A modern main bathroom, a utility room, and a spacious entrance hall complete the accommodation, all finished to a high standard with quality materials and thoughtful design throughout.

In total, the accommodation extends to approximately 48 sq m / 519 sq ft, with the full layout available on the adjoining floorplans.



Contemporary one bedroom apartment with views overlooking Dublin city.

Heuston South Quarter, St John's Road West, Kilmainham, D08 WY23



Contemporary one bedroom
apartment with views overlooking
Dublin city.

Heuston South Quarter, St John's Road West, Kilmainham, D08 WY23



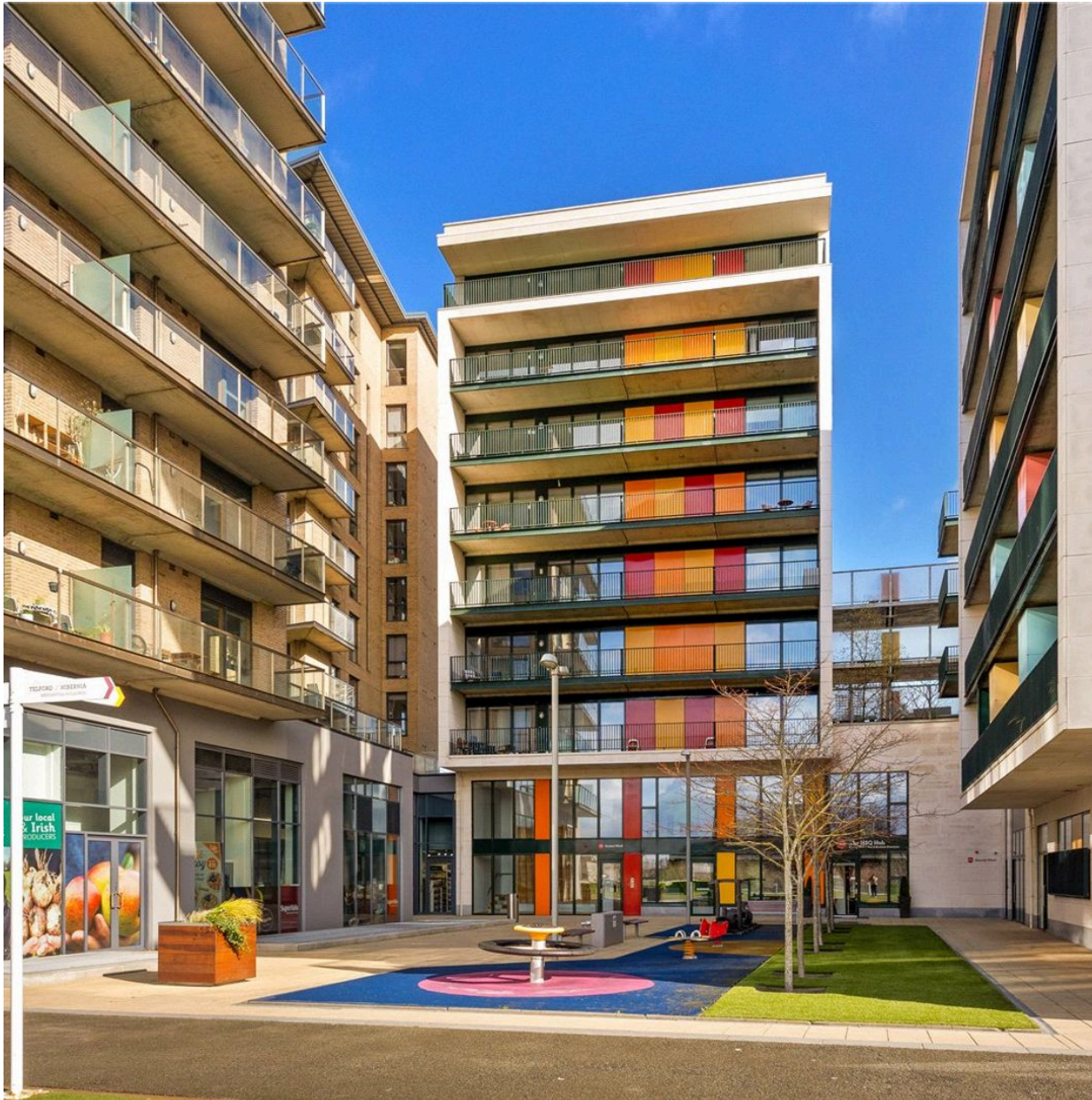
Plans



Contemporary one bedroom
apartment with views overlooking
Dublin city.

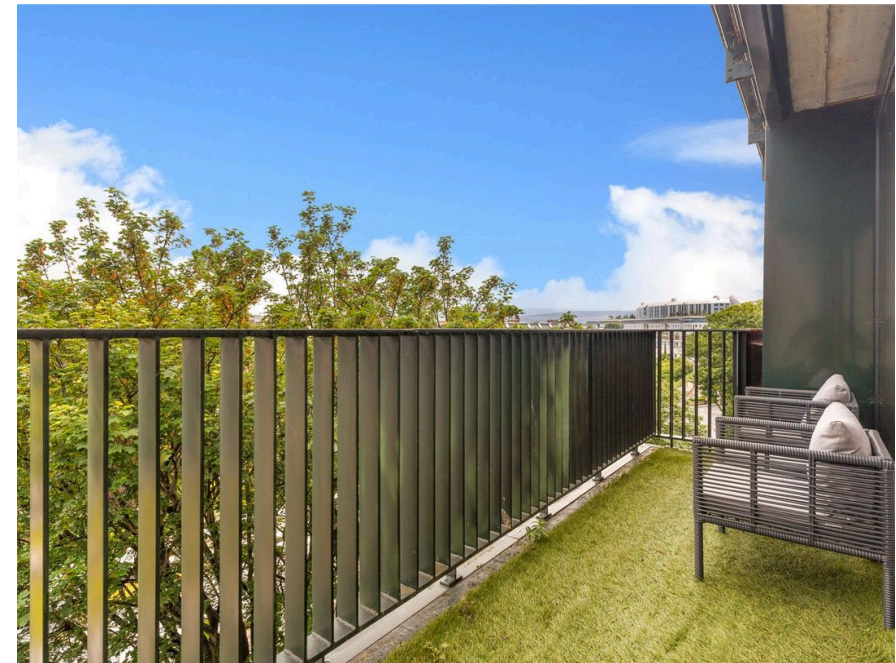
Heuston South Quarter, St John's Road West, Kilmainham, D08 WY23

savills



Local Area

Heuston South Quarter, located in Dublin 8, is a historic and culturally rich area just south of the River Liffey and west of Dublin's city centre. This vibrant district is renowned for its significant landmarks, including Kilmainham Gaol, the Irish Museum of Modern Art, housed in the stunning 17th-century Royal Hospital Kilmainham and the Phoenix Park. The area is well-served by public transport, located minutes away from Heuston Station which is serviced by National Rail, Luas, Dublin Bus and the Dublin Express to Dublin Airport.



Property Details

Key Features

Modern contemporary fifth floor apartment
East facing balcony
Views overlooking Dublin city
Walking distance of Phoenix Park
Located minutes away from Heuston Station which is serviced by National Rail, Luas, Dublin Bus and the Dublin Express to Dublin Airport.
A secure underground car parking space is included

Services & Additional Information

HSQ offers a range of onsite amenities and security features, including Supervalu, Insomnia, HQQ cafe, a pharmacy, a 24- hour high-spec gym, Safari childcare, controlled fob access, 24-hour security, lifts, and CCTV surveillance. In addition, there is an on-site concierge which ensures that the development is well-maintained, providing a high level of service to all.

BER

BER Rating = N/A



Contemporary one bedroom
apartment with views overlooking
Dublin city.

Heuston South Quarter, St John's Road West, Kilmainham, D08 WY23



Enquire



Rose Lyle
Dublin - Country
+ 353 (0) 1 618 1300
rose.lyle@savills.ie

More Information



View on website



View Digital Brochure



Property Search

Viewing strictly by appointment

Property Ref: DUY250150



Important Notice: Savills, its clients and any joint agents give notice that 1: They are not authorised to make or give any representations or warranties in relation to the property either here or elsewhere, either on their own behalf or on behalf of their client or otherwise. They assume no responsibility for any statement that may be made in these particulars. These particulars do not form part of any offer or contract and must not be relied upon as statements or representations of fact. 2: Any areas, measurements or distances are approximate. The text, photographs and plans are for guidance only and are not necessarily comprehensive. It should not be assumed that the property has all necessary planning, building regulation or other consents and Savills have not tested any services, equipment or facilities. Purchasers must satisfy themselves by inspection or otherwise. *powered by* **FluoPro**