

# For Sale

Asking Price: €370,000

**Sherry  
FitzGerald**  
O'Leary Kinsella



Corragh, Bunclody,  
Co. Wexford, Y21 EP02

**BER D2**

[sherryfitz.ie](https://sherryfitz.ie)



### A Charming Country Residence on c. 1.09 Acres in a Stunning Scenic Setting

Nestled amidst the rolling countryside just minutes from Bunclody Town, Corragh is a beautifully presented detached country residence offering peace, privacy and character in equal measure. Set on approximately 1.09 acres of mature grounds, this delightful home enjoys an idyllic rural setting while remaining conveniently located just a 4-minute drive from the vibrant amenities of Bunclody.

Extending to approximately 104 sq.m. (1,119 sq.ft.), this attractive property exudes warmth and charm throughout. The home has been lovingly maintained and features bright, well-proportioned accommodation complemented by an abundance of natural light and attractive countryside views from every aspect.

Upon arrival, the property immediately impresses with its picturesque façade, mature gardens and sweeping gravel driveway. Internally, the accommodation is enhanced by exposed timber beams, solid wood flooring, vaulted ceilings and a welcoming atmosphere that perfectly complements its countryside setting. The spacious living room centres around a feature fireplace with stove, creating a cosy focal point for family gatherings and relaxing evenings.



The kitchen/dining area is both stylish and practical, featuring contemporary cabinetry, quality finishes and ample space for everyday living and entertaining. Upstairs, the bedrooms enjoy characterful vaulted ceilings with two en-suite bedrooms, offering peaceful retreats from the bustle of daily life.

Outside, the grounds are a particular highlight. Beautiful lawns are framed by mature trees, hedgerows and established planting, creating a private haven for nature lovers. A unique feature of the property is the collection of attractive old stone outbuildings and garden structures, including a charming stone-built seating area and pergola, providing wonderful spaces for outdoor entertaining, al fresco dining or simply enjoying the tranquility of the surroundings.

The elevated setting affords spectacular panoramic views over the rich patchwork countryside and distant hills including stunning views of Mount Leinster, making this a truly special location. Whether seeking a permanent family home, a peaceful country retreat or a lifestyle property with character and charm, Corragh offers a rare opportunity to acquire a home in one of North Wexford's most scenic locations.

### Accommodation

**Entrance:** 1.4m x 1.4m (4'7" x 4'7"):

**Living Room:** 4.4m x 5.3m (14'5" x 17'5"):

**Kitchen – Dining Rom** 4.9m x 3.4m (16'1" x 11'2"):

**Utility Room:** 4.9m x 1.7m (16'1" x 5'7"):

**W.C.:** 1.2m x 1.8m (3'11" x 5'11"):

### 1st Floor

**Landing:** 3.8m x 1.3m (12'6" x 4'3"):

**Master Bedroom:** 4.7m x 3.5m (15'5" x 11'6"):

**Ensuite** 2.8m x 1.5m (9'2" x 4'11"):

**Bedroom 2:** 4.8m x 4.9m (15'9" x 16'1"):

**En-suite:** 1.8m x 2.0m (5'11" x 6'7"):





**Special Features & Services**

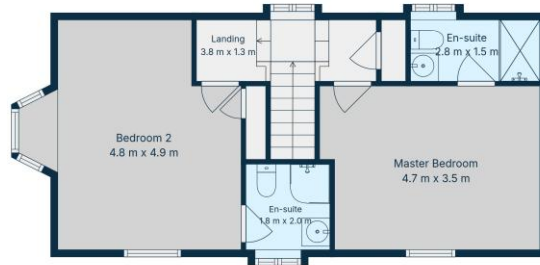
- Set on c. 1.09 acres of beautifully maintained grounds
- Approx. 4 minutes' drive from Bunclody Town
- Exceptional scenic countryside setting
- Stunning character with old stone buildings.

Services:

- Private water, private sewerage, fibre broadband available.

**BER** BER D2, BER No. 112260773





2nd Floor



1st Floor

**TOTAL: 104 m<sup>2</sup>**  
 1st floor: 52 m<sup>2</sup>, 2nd floor: 52 m<sup>2</sup>  
 EXCLUDED AREAS: WALLS: 10 m<sup>2</sup>

Floor Plan Created By Cubicasa App. Measurements Deemed Highly Reliable But Not Guaranteed.





**NEGOTIATOR**

Declan O'Leary  
Sherry FitzGerald O'Leary  
Kinsella  
11 Slaney Street, Enniscorthy, Co  
Wexford  
T: 053 92 37322  
E: sfol@wexproperty.ie

**SOLICITOR**

[sherryfitz.ie](http://sherryfitz.ie)

**CONDITIONS TO BE NOTED:** A full copy of our general brochure conditions can be viewed on our website at <http://www.sherryfitz.ie/terms>, or can be requested from your local Sherry FitzGerald office. We strongly recommend that you familiarise yourself with these general conditions. While care has been taken to ensure that information contained in Sherry FitzGerald publications is correct at the time of publication, changes in circumstances after the time of publication may impact on the accuracy of this.

PSRA Registration No. 001510