



Downey McCarthy

....the people you can trust

FOR SALE

Residential Development Site No.14, The Avenue, Woodville, Dunkettle, Co Cork.



OUTSTANDING RESIDENTIAL DEVELOPMENT SITE.

Outstanding residential development site extending to c. 0.2 acres (c. 0.08Ha) with FPP (TP 17/04816) for 2 No. Detached dwellings set in the mature and desirable Woodville development.

AMV: €260,000

60 South Mall, Cork.

Tel: 021 4905000 | **Fax:** 021 4905005

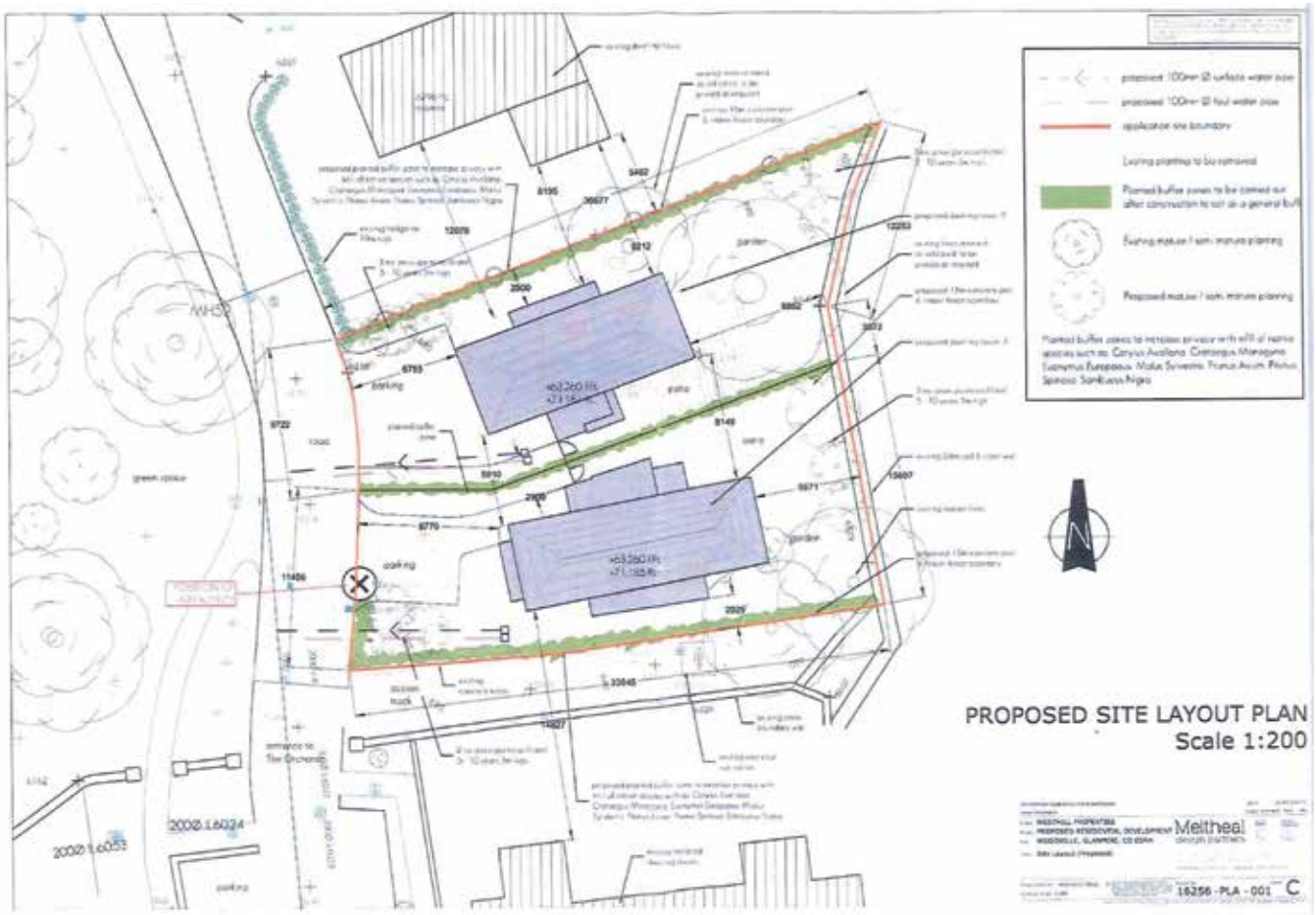
Email: info@eracork.ie | **Web:** www.eracork.ie

PSRA No. 002584

Location

Located in a highly desirable location with excellent access to the Dunkettle Interchange and Glanmire. Cul de Sac location ensuring excellent privacy.

Site Layout Plan



Accommodation

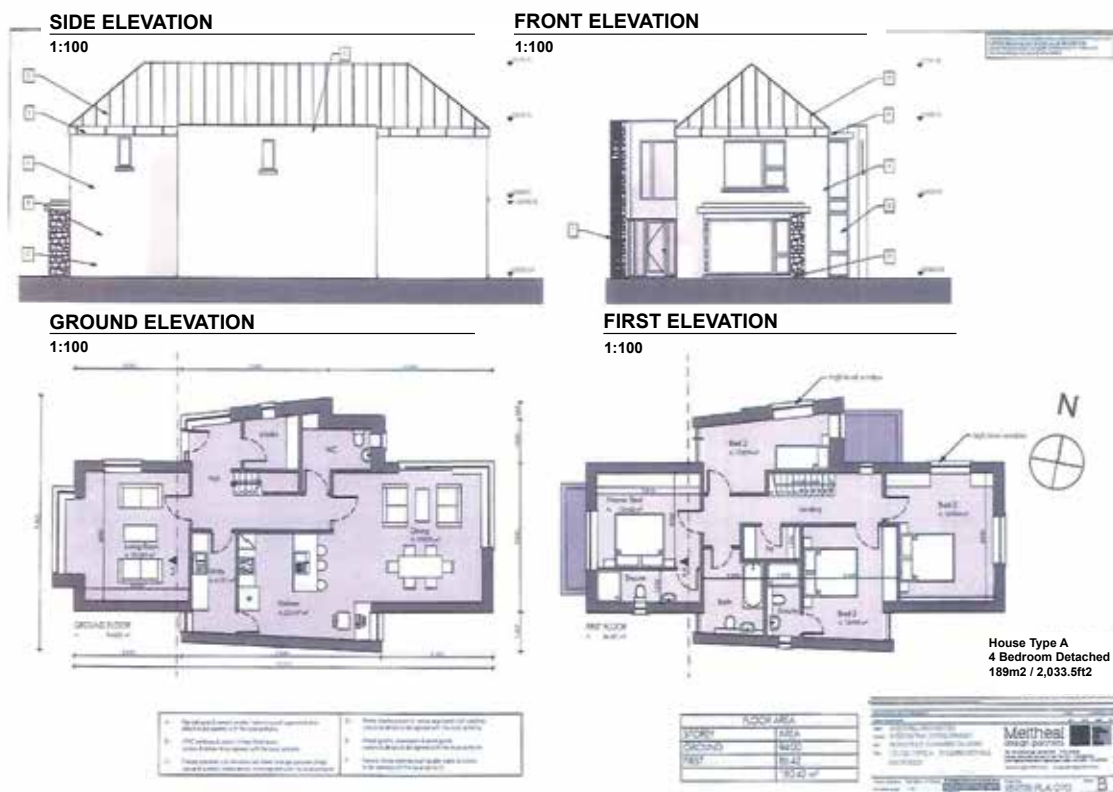
There are 2 permitted house types:

Type A 189sqm (4 bed c. 2,034 sqft) & Type B 144.35sqm (3 bed c. 1,554 sqft).

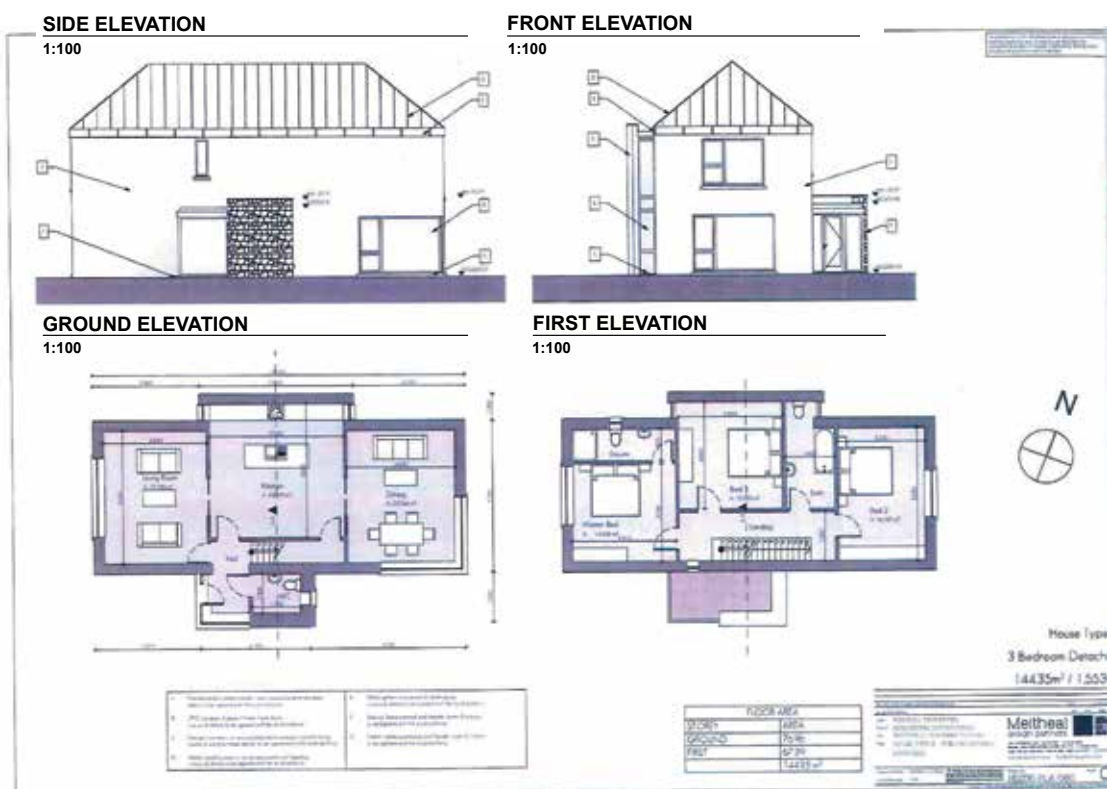
Directions

From the Dunkettle inter change take the first exit for Glounthaune and turn left at the roundabout past the primary school. Continue up the hill. As the hill begins to level off the entrance to Woodville is on your left.

FLOOR PLAN HOUSE TYPE A



FLOOR PLAN HOUSE TYPE B



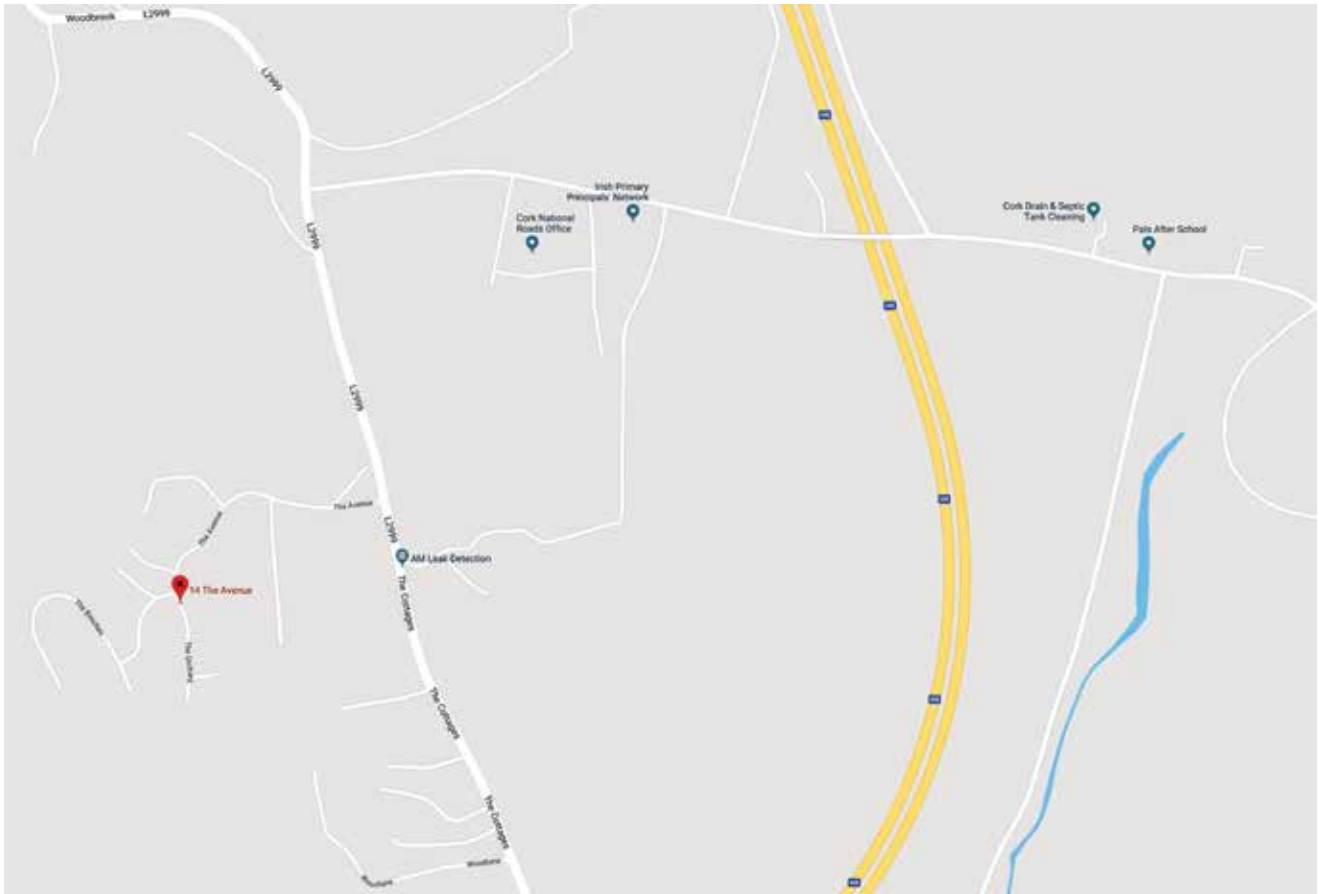
60 South Mall, Cork.

Tel: 021 4905000 | **Fax:** 021 4905005

Email: info@eracork.ie | **Web:** www.eracork.ie

PSRA No. 002584

SITE LOCATION



Agent:

Ger White,

Tel: 021-4905000

Mobile: 087-9733111

Email: ger@eracork.ie

Agent:

Sean McCarthy,

Tel: 021-4905000

Mobile: 086-8385768

Email: sean@eracork.ie

Disclaimer

The above details are for guidance only and do not form part of any contract. They have been prepared with care but we are not responsible for any inaccuracies. All descriptions, dimensions, references to condition and necessary permission for use and occupation, and other details are given in good faith and are believed to be correct but any intending purchaser or tenant should not rely on them as statements or representations of fact but must satisfy himself / herself by inspection or otherwise as to the correctness of each of them. In the event of any inconsistency between these particulars and the contract of sale, the latter shall prevail. The details are issued on the understanding that all negotiations on any property are conducted through this office.

60 South Mall, Cork.

Tel: 021 4905000 | **Fax:** 021 4905005

Email: info@eracork.ie | **Web:** www.eracork.ie

PSRA No. 002584