

For Sale

Asking Price: €70,000

**Sherry
FitzGerald**
O'Leary Kinsella



The Old House,
6 Templeshannon,
Enniscorthy, Co Wexford,
Y21 PP22

sherryfitz.ie



Exceptional Redevelopment Opportunity just a few minutes from Enniscorthy's main town square.

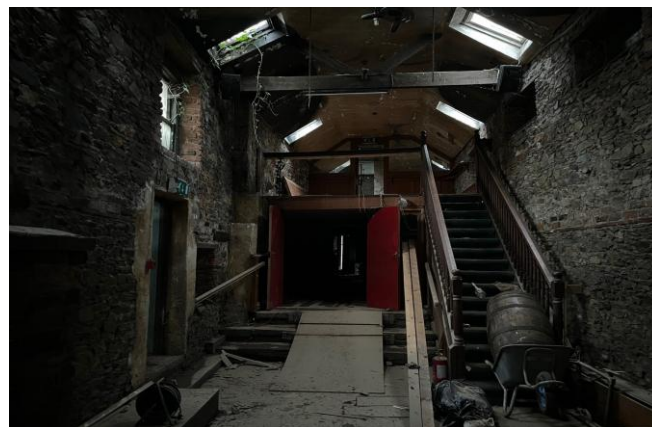
Located across from Treacys Hotel, the property has been vacant for a number of years and now offers significant potential for complete refurbishment and redevelopment, located di subject to the necessary consents. Its generous proportions and central location make it suitable for a variety of uses, including residential, commercial, or mixed-use.

The ground floor comprises a large open-plan area previously used as a bar and lounge with a large high ceiling area to the rear. The first floor has a large store room while the second floor is attic storage.

The town's main market square is within a five-minute walk, while both Bus Éireann and Wexford Bus services operate directly outside the property, ensuring excellent transport links.

This is an outstanding opportunity for investors or owner-occupiers seeking a centrally located property with strong redevelopment potential in the heart of Enniscorthy.

Please note that as this property was acquired under the URDF program, its disposal is subject to conditions including Section 183 approval.



Accommodation

Bar & Lounge Area 24.46m x 4.08m + 4.26m x 4.31m (80'3" x 13'5") + (14'2" x 14'3"):

First Floor 14.23m x 4.19m (46'8" x 4.19):

Second Floor Attic Storage:





NEGOTIATOR
Sherry FitzGerald O'Leary
Kinsella
11 Slaney Street, Enniscorthy, Co
Wexford
T: 053 92 37322
E: sfol@wexproperty.ie

SOLICITOR

sherryfitz.ie

CONDITIONS TO BE NOTED: A full copy of our general brochure conditions can be viewed on our website at <http://www.sherryfitz.ie/terms>, or can be requested from your local Sherry FitzGerald office. We strongly recommend that you familiarise yourself with these general conditions. While care has been taken to ensure that information contained in Sherry FitzGerald publications is correct at the time of publication, changes in circumstances after the time of publication may impact on the accuracy of this. PSRA Registration No. 001510