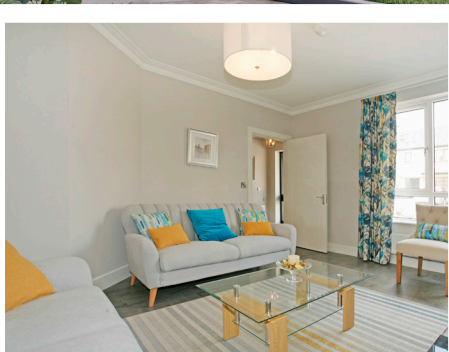


# The LILY TYPE C

254 m<sup>2</sup> 2,734 ft<sup>2</sup>



Fox Meadow  
by Clancy Homes



## The Lily

The Lily is a five bedroom detached executive style home of c. 246 sqm featuring perhaps the best laid out accommodation at Fox Meadow for busy family life. This generous design features a vast open plan kitchen/dining/living room which acts as the focal point of the home and it also retains a luxurious private sitting room to the front ensuring this home ticks all the boxes. The grand feeling of The Lily is further complimented by the luxurious stairs, with large window, drawing warm natural light throughout the home.

## Fox Meadow by Clancy Homes

Fox Meadow is an exclusive development of large family homes in a rural setting on the edge of the city. The quality, design and attention to detail are of the highest standard. Its proximity to Kilkenny city, and the excellent amenities on the doorstep, all make Fox Meadow a truly sought-after place to call 'home'.



☎ 056 7786000

✉ info@dngelladunphy.com

📍 9 Ormonde Street, Kilkenny City, Co. Kilkenny

foxmeadowhomes.ie

# The LILY TYPE B

254 m<sup>2</sup> 2,734 ft<sup>2</sup>

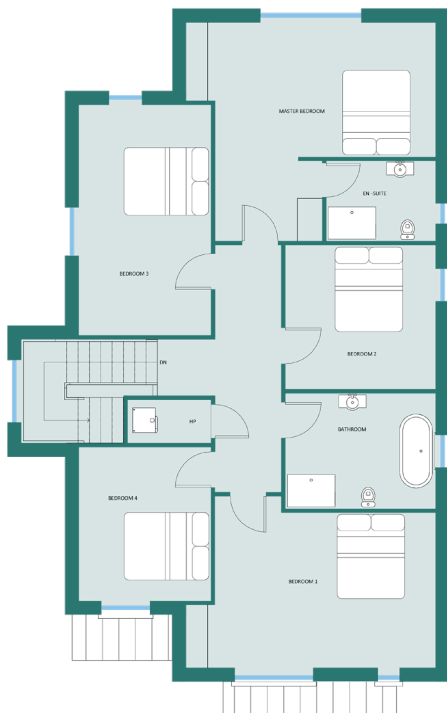


Fox Meadow  
by Clancy Homes



## Ground Floor

Room	Metric (m)	Imperial (ft)
Kitchen/ Dining	7.6 x 8.7	24.9 x 28.5
Utility	2.4 x 3	7.9 x 9.8
W/C	2.4 x 1.5	7.9 x 4.9
Living	5.5 x 6.1	18 x 20
Cloak Room	1.4 x 2	4.6 x 6.6



## First Floor

Room	Metric (m)	Imperial (ft)
Bedroom 1	3.8 x 5.3	12.5 x 17.4
En-Suite	2 x 2.6	6.6 x 8.5
W/C	2.8 x 3.6	9.2 x 11.8
Bedroom 2	3.5 x 3.6	11.5 x 11.8
Bedroom 3	5.6 x 3.2	18.4 x 10.5
Bedroom 4	3.7 x 3.2	12.1 x 10.5
Master Bedroom	5.3 x 6.1	17.4 x 20
Hot Press	1 x 2	3.3 x 6.6

The particulars in this brochure are for guidance only and do not form any part of any contract. Maps and plans are not drawn to scale and measurements are approximate.