

For Sale

Asking Price: €140,000

Sherry
FitzGerald
O'Donovan



Ballymounteen, Ballynoe,
Co. Cork
P51 RP3F



sherryfitz.ie

Sherry FitzGerald O Donovan offer for sale this single storey detached cottage sitting on approx. 1.06 of an acre site. The Folio No is CK4611.

This 2 bedroom property is in need of complete refurbishment, however we believe it may qualify for the Derelict/Vacant Property Refurbishment Grant of up to €70,000.

The property has scenic views of the surrounding countryside and is located approximately 2.5 km from the village of Ballynoe and 16 km from the town of Midleton and approximately 19km from Fermoy town.

BER BER G, BER No. 118575414

Directions:

52.037246 -8.103385

Please note the Eircode for this property is not registering. Follow the directions for Ballynoe School (P51 YD60), the property is approximately 1.8 km from the school.

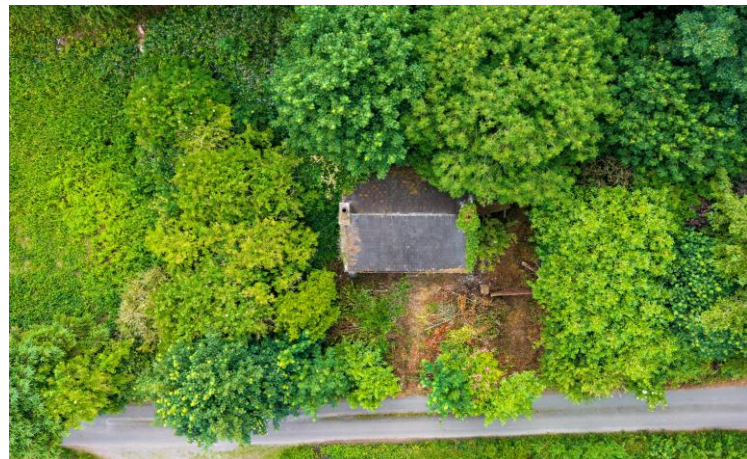
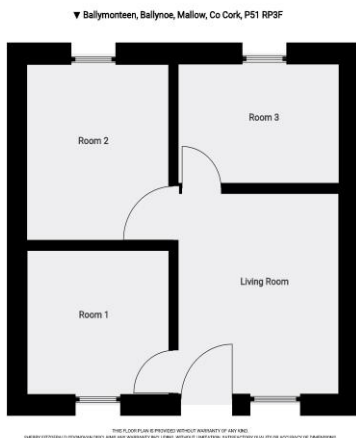
[https://www.google.com/maps/search/52.0423892,-](https://www.google.com/maps/search/52.0423892,-8.1184132,3923/@52.0481931,-8.1147855,2773m/data=!3m1!1e3?entry=ttu&g_ep=EgoyMDI1MDcwOS4wKXMDSoASAFQAw%3D%3D)

[8.1184132,3923/@52.0481931,-](https://www.google.com/maps/search/52.0423892,-8.1184132,3923/@52.0481931,-8.1147855,2773m/data=!3m1!1e3?entry=ttu&g_ep=EgoyMDI1MDcwOS4wKXMDSoASAFQAw%3D%3D)

[8.1147855,2773m/data=!3m1!1e3?entry=ttu&g_ep=EgoyMDI1MDcwOS4wKXMDSoASAFQAw%3D%3D](https://www.google.com/maps/search/52.0423892,-8.1184132,3923/@52.0481931,-8.1147855,2773m/data=!3m1!1e3?entry=ttu&g_ep=EgoyMDI1MDcwOS4wKXMDSoASAFQAw%3D%3D)

Special Features

- Renovation property
- Approx 38 sq. m
- Scenic countryside location
- Private water supply
- May qualify for the Derelict/Vacant Refurbishment Grant



NEGOTIATOR

Donal Barry
Sherry FitzGerald O'Donovan
2 Waterside, Ashe Quay, Fermoy,
Co Cork
T: 025 32725
E: fermoy@sfod.ie

sherryfitz.ie

CONDITIONS TO BE NOTED: A full copy of our general brochure conditions can be viewed on our website at <http://www.sherryfitz.ie/terms>, or can be requested from your local Sherry FitzGerald office. We strongly recommend that you familiarise yourself with these general conditions. While care has been taken to ensure that information contained in Sherry FitzGerald publications is correct at the time of publication, changes in circumstances after the time of publication may impact on the accuracy of this. PSRA Registration No. 003457