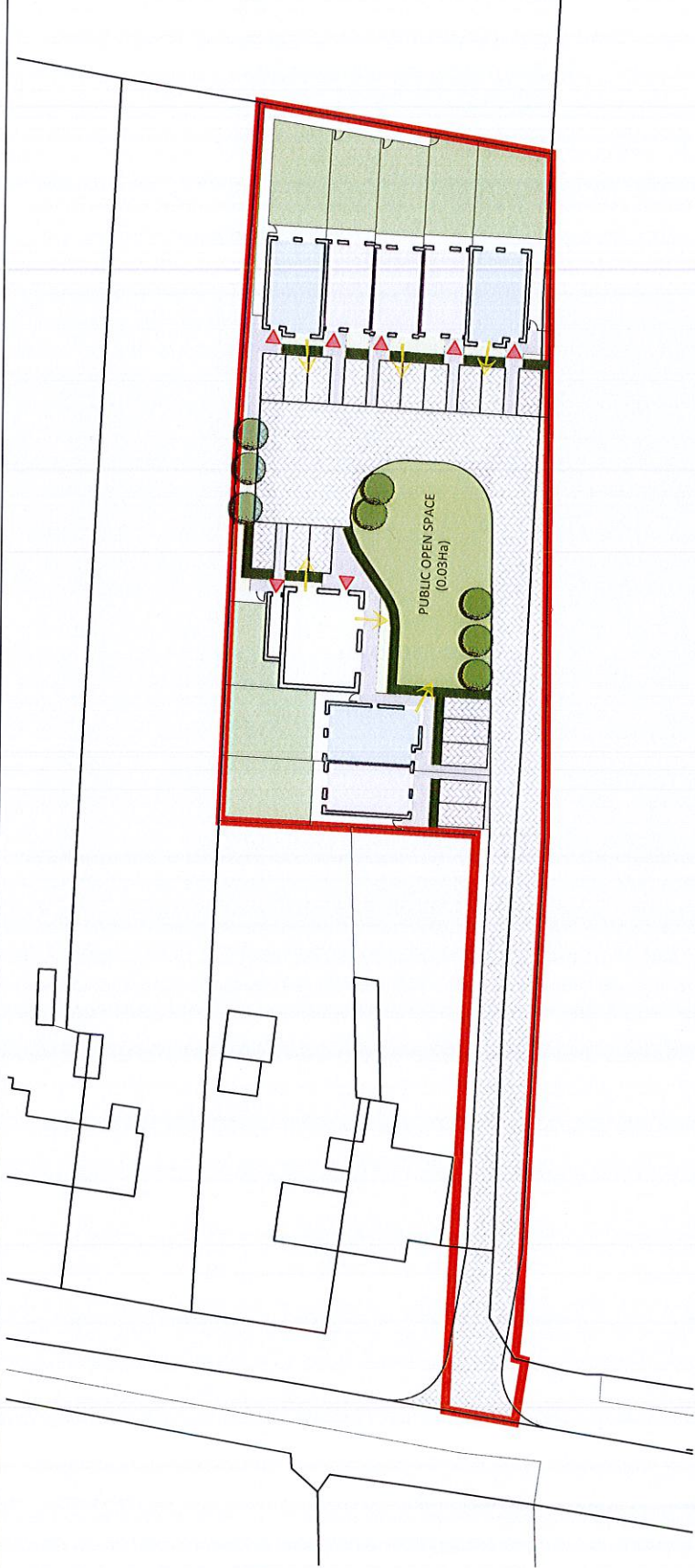
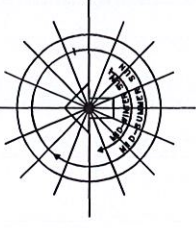


NORTH



Proposed Site Plan Scale: 1:500



SITE LEGEND :	
	Application Site - 0.29 hectares
	Public Open Space
	Private gardens/ private amenity areas
	Soft landscaped areas
	Proposed Trees
	Proposed low lying native hedgerow planting
	Pedestrian Paths - Paving
	Cobblelock Paving to private driveways and parking space to all Houses/ apartments
	Cobblelock Paving to homezone area
	Passive Security

LEGEND TO HOUSING :	No. of Units
	4
	3
	2
TOTAL UNITS	9
SUMMARY OF ACCOMMODATION :	
4 no. 2 Bedroom Houses	
3 no. 3 Bedroom Houses	
2 no. 2 Bedroom Apartments	
9 - TOTAL	

Preliminary Notes :	
Planning Zoned :	Residential (1)
Housing Site Area:	0.29 hectares
Public Open Space:	10.3% (0.03 hectares)
Density:	Plus 32 per ha (9 Units)

DATE	BY	DESCRIPTION OF REVISION



Unit 2, Quayside Business Park,
Mill Street, Dundalk, Co. Louth,
design@deniswilliams.ie
deniswilliams.ie Tel: 042-9326917

CLIENT NAME: Michael Hand
PROJECT NAME: Micheal Hand Housing Development
DRAWING TITLE: Proposed Site Plan

PROJECT NUMBER	DRAWING NUMBER	REVISION	SCALE(S)	STATUS	DATE DRAWN	DRAWN BY	CHECKED BY
2929_1	100	0	1:500 @ A3	Preliminary	17.10.22	N.B	R.K

This document is the property of Denis Williams Design Services LTD. The design information contained herein is strictly confidential. This document is not to be used, reproduced, disclosed or circulated in whole or in part without the written consent of Denis Williams Design Services LTD. Figured dimensions must be used in preference to scaled dimensions. Any dimensional discrepancies must be reported to this office immediately.