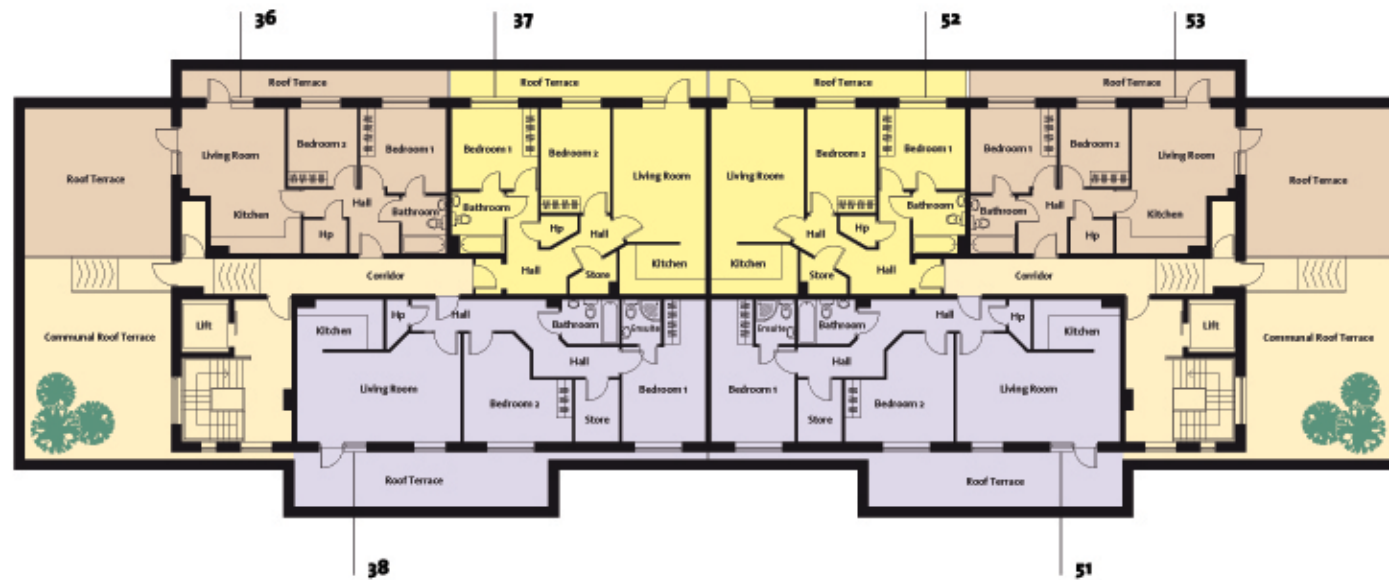


## BLOCK F Ground, 1st & 2nd Floor Plans



## BLOCK F Penthouse Floor Plan



- Type A** c.52.5 sqm (565 sq ft)\*
- Type B** c.64.15 sqm (690 sq ft)\*
- Type C** c.67.85 sqm (730 sq ft)\*
- Type H** c.77.58 sqm (835 sq ft)\*
- Type I** c.82.18 sqm (885 sq ft)\*
- Type J** c.82.75 sqm (890 sq ft)\*
- Type K** c.85 sqm (915 sq ft)\*

\* Excludes balcony and terrace areas.

## Booking Arrangements

Booking deposit €3,000.

Contract deposit €7,000 payable on signing within 3 weeks.

Balance due on sale closure.

## STANDARD FEATURES

- Natural gas central heating
- Hardwood front doors
- Security intercom system
- 6" skirting boards throughout
- Excellent standard of insulation
- Wired for telephone, TV and burglar alarm
- Brushed chrome and stainless steel ironmongery
- Painted throughout in Dulux Orchid White
- High quality Shires sanitary ware
- Fitted shower door in en-suites
- Floor and wall tiling in bathrooms and en-suite (where applicable) as per show unit type
- Cream gloss kitchen with walnut worktop and integrated stainless steel hood by Nolan Kitchens
- Floor and wall tiling in kitchens as per show unit type
- Whirlpool kitchen appliances as per show unit type
- High quality fitted wardrobes by Cawleys as per show unit type
- Energy Certificate supplied
- Landscaped open space
- Covered by 10-year HomeBond guarantee scheme
- Covered by IHBA Purchase Pledge Protection

## BLOCK F (Apts 24-53) Floor Plans and Features



**Note:** These plans and specifications are issued strictly on the understanding that they do not form part of any contract and are provided, without liability, as a general guide only to what is being offered subject to contract and availability. They are not to be construed as containing any representation of fact upon which any interested party is entitled to rely. Any intending purchaser or lessee should satisfy themselves by inspection or otherwise as to accuracy of these particulars. Plans are not to scale and layouts are indicative.