



28 Lower Leeson Street, Dublin 2.

PHONE: (01) 411 0012

email: karen@coldwellbanker.ie

web: www.coldwellbanker.ie

PSR Licence No.: 002120

Asking Price: €250,000

Viewings: Strictly by appointment with the sole agents.

Negotiator: Karen Mulvaney (087) 667 1986.

"Each Office is Independently Owned and Operated"

Whilst all reasonable care has been taken in preparing this brochure this firm shall not be held responsible for any inaccuracy to any of the particulars, photographs or description relating to any property or properties referred to and shall not be liable for any expenses that may be incurred by any party investigating, researching or viewing any such property and which that party may determine to be unsuitable or which may have been let, sold, withdrawn or no longer available for disposal. Interested parties are advised to make an appointment directly with us to view the property and to establish with us that the property is still on the market with us as agents before they incur any pre bid costs. We ask you to note that we have no authority to bind the vendor or the landlord in contract and no contract shall exist or be deemed to exist until a formal contract or lease as prepared by the Vendor or Landlord or the Vendor's or Landlord's solicitor has been formally executed by the Vendor or Landlord or their appointed legal agent. These particulars do not constitute any part of an offer or contract. All statements contained in these particulars, as to this property, are made without responsibility on the part of the Agents or the Vendor/Lessor and none of the statements contained in these particulars as to this property are to be relied on as statements or representations of fact. The particulars, various plans, photographs, dimensions, references to condition and permission for use and occupation are given in good faith and are believed to be correct but their accuracy is not guaranteed and any intending Purchasers or Tenants shall satisfy themselves by inspection or otherwise as to correctness of each of them. No omission, accidental error or mis-description shall be a ground for a claim for compensation nor for the rescission of the contract by either the Vendor/Lessor or the Purchaser/Tenant. No one in our employment has the authority to make or give any representation or warranty whatever in relation to the property. Prices are quoted exclusive of VAT (unless otherwise stated) and all negotiations are conducted on the basis that the Purchaser/Tenant shall be liable for any VAT arising on the transaction.

Apartment 9

The Walnut, Grattan Wood,
The Hole in The Wall Road,
Dublin 13

BER D1



For Sale By Private Treaty

Gated Community

Secure Car Parking

Convenient Location

Bright & Spacious Apartment

South Facing Balcony

Lift Service

Apartment 9, The Walnut, Grattan Wood, The Hole in The Wall Road, Dublin 13

Karen Mulvaney of Coldwell Banker is proud to present to market a beautiful two-bedroom apartment in Donaghmede. Newly decorated and on the second floor with south facing windows and balcony, this is an airy and spacious apartment in the most convenient of locations.

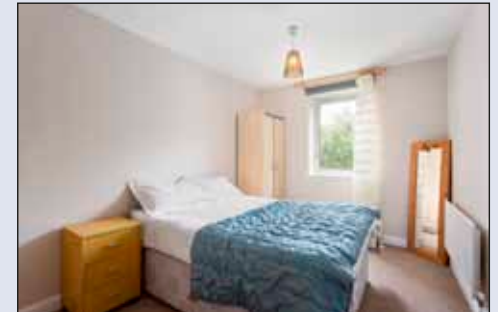
It is immaculately presented and very well located, a stone's throw from Donaghmede with a large array of shopping and schools. It is also just off the N32 which links to the M1 & M50. This is also seriously convenient for Dublin Airport.

With gas fired central heating, gas fire place, large south facing balcony and windows this is an ideal home for any discerning buyer.

Accommodation briefly comprises of; Entrance Hall, Living Room with wall to wall windows and sliding door opening out onto a south facing balcony flooding the room with light, Dining area off the fitted kitchen. There are also two large double bedrooms with an en suite off the Master and main bathroom.



FLOOR PLANS (Not to Scale)



Accommodation

Hallway	2.85m x 3.58m	Carpitted hallway with storage.
Bedroom 1	4.64m x 3.12m	Large Master bedroom with built in wardrobes and south facing window.
En Suite	1.43m x 2m	Tiled floor and splashback w.c., w.h.b. and walk in shower.
Bedroom 2	3.89m x 2.66m	Double bedroom with built in wardrobes and south facing window.
Bathroom	1.77m x 2.19m	Tiled floor splashback w.c., w.h.b. and bath with shower.
Living Area	4.63m x 3.37m	Spacious bright living room with gas fireplace, wall to wall windows with door leading to South facing balcony.
Dining/ Kitchen Area	2.17m x 3.37m	Black high gloss tiles flooring, wall and floor shaker units, gas oven and hob, integrated fridge freezer and washing machine.

Floor Area Approx. 61.32 sq m.