

Glenlough, Ardfoyle Crescent, Ballintemple, Cork Cork T12 YK2F



FOR SALE BY PRIVATE TREATY

Located in this leafy suburb in the heart of Ballintemple, Ardfoyle Crescent is a very mature private residential park located immediately adjacent to all services.

The house which dates from the 1930s has many original and attractive features and has the advantage of a very private garden to the rear.

This is a great opportunity to acquire a quality residence in a great location with potential for improvement.

DETACHED

3 BED—2 BATH

115.57sqm / 1,242sqft



Agent: Malcolm Tyrrell
Phone: 0872554116

Viewings Strictly By Appointment With Sole Agency

ACCOMMODATION

Ground Floor

Entrance Porch

Hallway

Terrazzo floor, stairs to first floor with storage underneath.

Living Room 4.12m X 3.03m (3.73m into bay)

Original tiled fireplace with Oak surround, Gas fired fitted, picture rail.

Dining Room 4.56m X 3.35m

Original fireplace with tiled insert and Oak surround, picture rail, window overlooking rear garden, serving hatch from Kitchen.

Kitchen 4.55m X 2.70m

Stainless steel sink unit, built in eye and ground level presses, gas central heating unit.

Utility/ Downstairs Toilet 1.73m X 1.48m

W.C., sink unit, plumbed for automatic machines.

First Floor

Bedroom 1 4.01m X 3.12m (3.82m into bay)

Complete wall of fitted wardrobes with built in dressing table and drawer unit.

Bedroom 2 3.67m X 3.42m

Double wardrobes

Bedroom 3 3.43m X 2.84m

Fireplace.

Bathroom 2.39m X 1.76m

Bath with shower attachment and wash hand basin.

Separate W.C. 1.32m X 0.92m

Outside

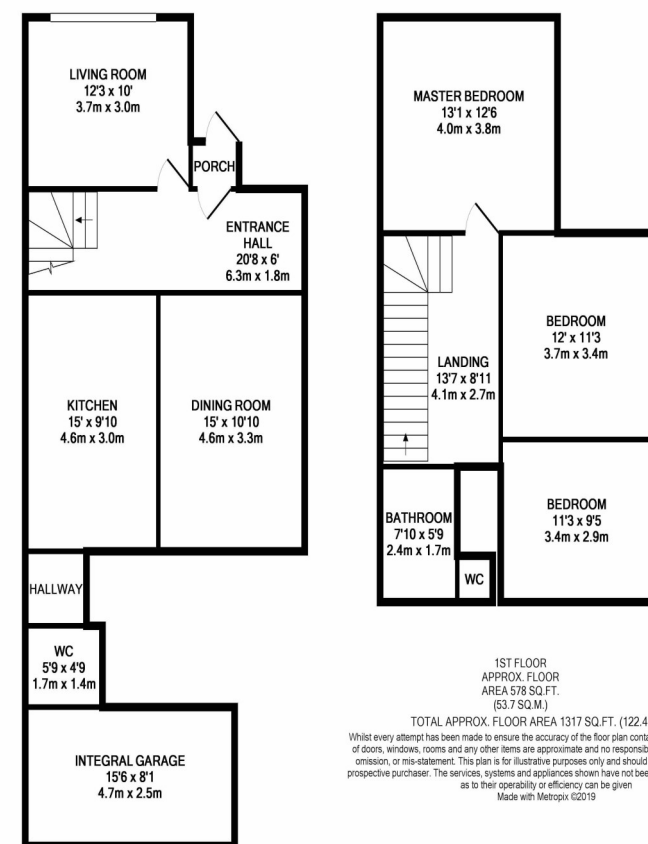
Garage 4.73m X 2.46m

Up and over door

Features

- > Gas central heating
- > PVC double glazed windows
- > Gardens to front and Rear

Solicitor: Ms.Carol Jermyn, Carol Jermyn & Co., Solicitors,
50 South Mall, Cork, T12 ND73



Messrs. Cohalan Downing, for themselves and for the vendors of this property whose agents they are, give notice that: (i) the particulars are produced in good faith, are set out as a general guide only and do not constitute any part of a contract, (ii) no person in the employment of Messrs. Cohalan Downing has authority to make or give any representation or warranty whatever in relation to the