



JP&M
DOYLE

Established. 1952

Auctioneers | Valuers | Estate Agents | Property Consultants

FOR SALE BY PRIVATE TREATY

**RESIDENTIAL INVESTMENT PROPERTY ,
THREE TWO BEDROOM TOWNHOUSES,
NO'S 1, 2 & 3 MORRISTOWN BILLER,**



**MORRISTOWN ROAD,
NEWBRIDGE,
CO. KILDARE**

jpmdoyle.ie

(01) 490 3201

LOCATION:

Situated just off the Morristown Road within close proximity to Newbridge Town Centre which offers an abundance of local amenities. The M7 Motorway can be easily accessed & there are transportation options including numerous bus routes or rail services.

DESCRIPTION:

Three Single story townhouses in this gated development of only four houses, each house extending to c 60 Square Meters/ 646 Sq. Ft. laid out in Hall, Livingroom/ Kitchen Area, Bathroom and Two Bedrooms.

DIRECTIONS:

As you enter Newbridge town from Dublin, the Keadeen Hotel will be on your left hand side. Proceed to the traffic lights (Mcloughlin's garage will also be on your left) and take a left at these lights. Proceed through the next set of lights on Morristown Road and take the third road left at Lakeside Court and pass the Mace Shop & Ladbrokes and the entrance is on the left.

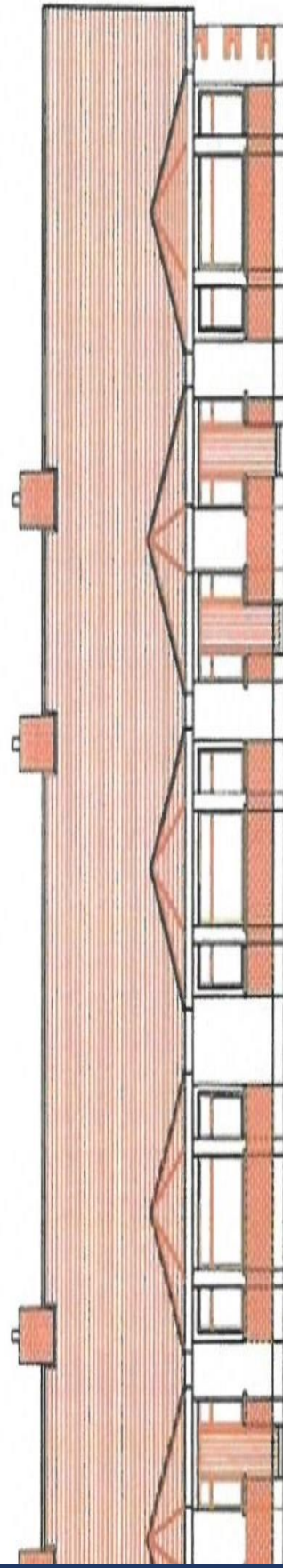
Service Charge: €4500 per annum (€1500 each)

VIEWING: BY APPOINTMENT ONLY

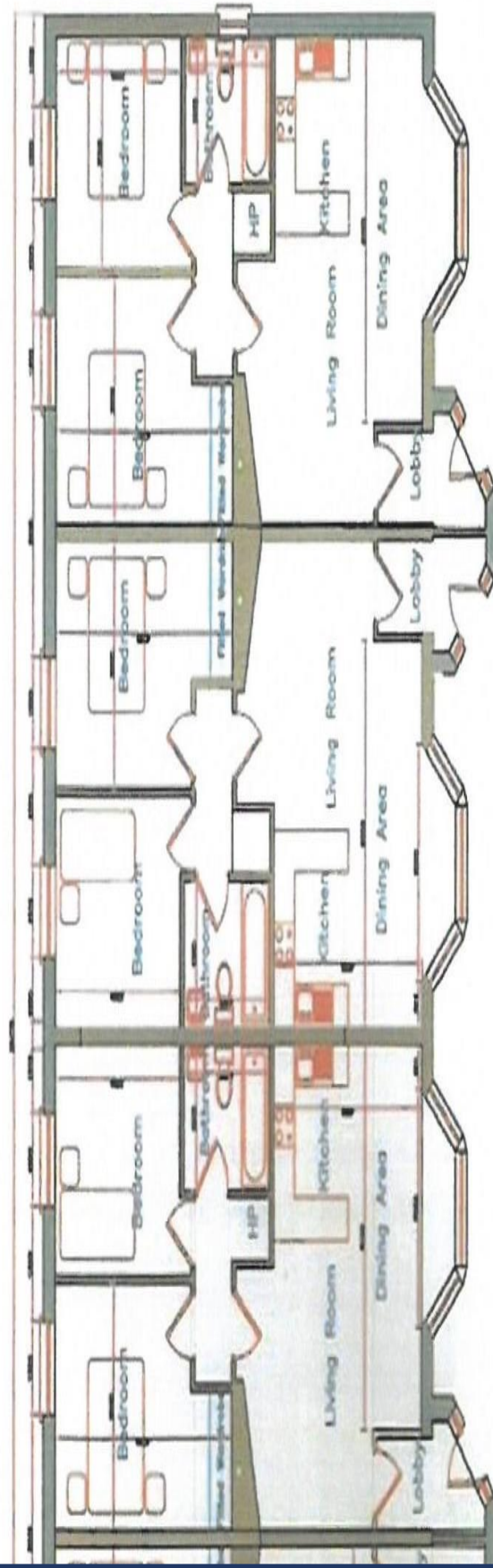
PRICE REGION: €330,000

BER: C1 & C2

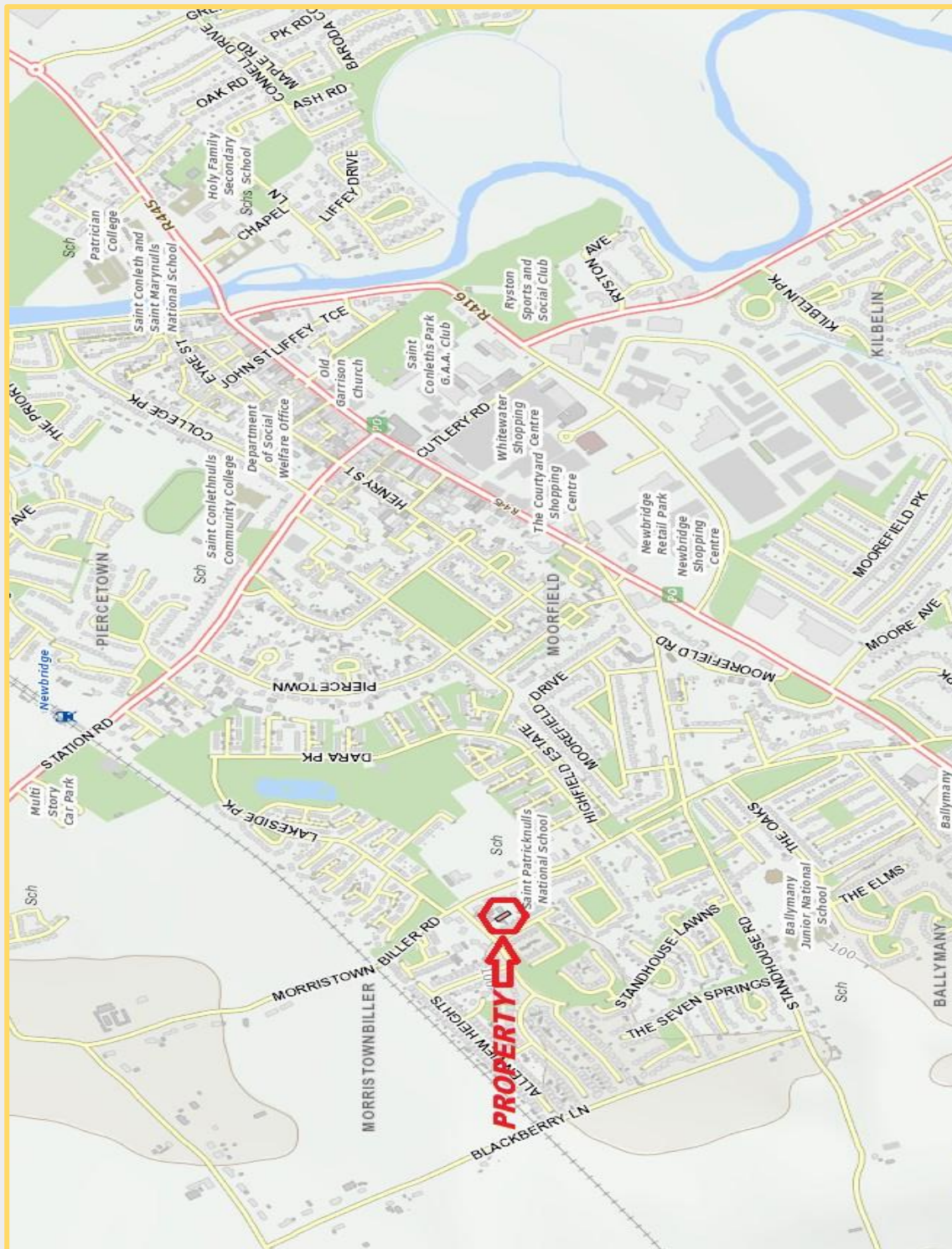




FRONT ELEVATION



FLOOR PLAN



JP&M
DOYLE

Established. 1952

105 Terenure Road East, Dublin 6, D06 XD29.

t: (01) 490 3201

f: (01) 490 7292

e: enquiries@jpmdoyle.ie

PSRA Licence: 002264

J.P. & M. Doyle Ltd., for themselves and for the vendors of this property whose agents they are, give notice that:

- (1) the particulars are set out as a general outline for the guidance of intending purchasers and do not constitute part of an offer or contract.
- (2) all description, dimensions, references to condition and necessary permission of use and occupation, and other details are given in good faith and are believed to be correct, but any intending purchasers or tenants should not rely on them as statements or representations of fact but must satisfy themselves by inspection or otherwise as to the correctness of each of them.
- (3) no person in the employment of J.P. & M. Doyle Ltd. has any authority to make or give any representations or warranty whatever in relation to the property.