

For Sale

Asking Price: €385,000

Sherry
FitzGerald
O'Neill



Station House, Main Street, Cullenagh,
Courtmacsherry, Co. Cork, P72 F902



sherryfitz.ie

Station House is a period home set in a street side location with a long elevated terraced garden enjoying wonderful views of Courtmacsherry Harbour.

Believed to date to the early 1800s, the property derives its name from its later association with the railway in the first half of the 19th century when the building was occupied by two Station Masters. The first, John O'Brien from c.1914 and later Patrick Madden from c.1934. who both held the title, 'Railway guard and Halt keeper'.

The many features include:

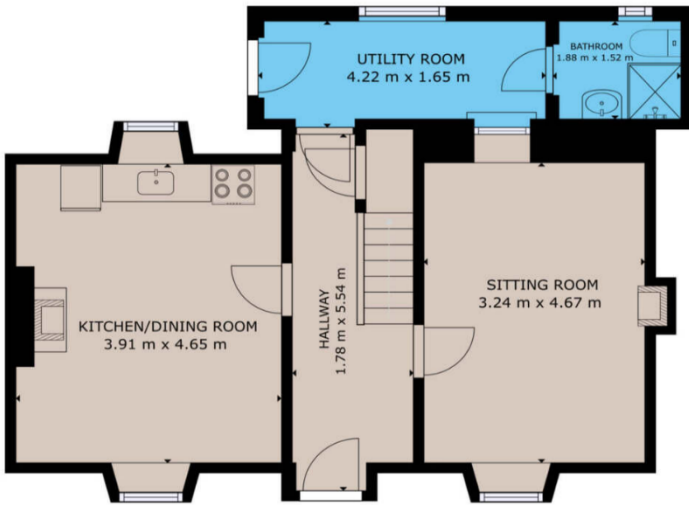
- o Harbour views from the front windows.
- o Private terraced garden with wonderful sea views and which backs onto mature woodland.
- o Well-proportioned and light filled rooms.
- o Surviving traditional features including open fireplace in the sitting room and one upstairs bedroom with antique fire surrounds, paneled window surrounds, internal traditional boarded timber doors and four-panel timber door to sitting room.
- o Electric Storage Heating.
- o Wood burning stove in kitchen.
- o High speed fibre broadband.

The accommodation which measures c. 89.44 sq.m. (963 sq.ft.) includes entrance hallway, sitting room, kitchen/dining room, utility and bathroom on the ground floor. The first floor comprises 3 bedrooms and a family bathroom.

To the back of the property is a terraced garden with steps to the top and various seating areas from which to enjoy the harbour views. A large storeroom/shed atop the garden offers further potential. Backing onto the mature woodland which covers the hill above Courtmacsherry and established planting within the garden all combines to create a serene private setting.

'Station House', offers an opportunity to purchase a family or holiday home set in an attractive harbour front location. Courtmacsherry is a vibrant West Cork coastal village that is noted for its outstanding collective community spirit. The property is ideally positioned between Kinsale, Bandon, and Clonakilty, giving easy access to shops, schools, beaches, and all the amenities the area has to offer.





GROUND FLOOR



FIRST FLOOR

GROSS INTERNAL AREA

TOTAL : 89.44 m²

Whilst every attempt has been made to ensure the accuracy of the floor plan contained here, measurements of doors, windows, rooms and any other items are approximate and no responsibility is taken for any error, omission, or misstatement. This plan is for illustrative purposes only and should be used as such by any prospective purchaser.



Outline for indication only and not to be relied upon



NEGOTIATOR

Con O'Neill
Sherry FitzGerald O'Neill
2 Western Road, Clonakilty
Co Cork
T: 023 883 3995
E: info@sfoneill.ie

VIEWINGS

Strictly By Appointment Only

ENERGY RATING

BER: G
Cert No.: 118996826
EPI: 512.92 kWh/m²/yr

sherryfitz.ie

sfoneill.ie

myhome.ie

daft.ie

rightmove.co.uk

CONDITIONS TO BE NOTED: A full copy of our general brochure conditions can be viewed on our website at <http://www.sherryfitz.ie/terms>, or can be requested from your local Sherry FitzGerald office. We strongly recommend that you familiarise yourself with these general conditions. While care has been taken to ensure that information contained in Sherry FitzGerald publications is correct at the time of publication, changes in circumstances after the time of publication may impact on the accuracy of this. PSRA Registration No. 004158