

A charming residential and equestrian holding on about 4.5 acres

Rathcormac, Co Sligo, F91 EP89



A charming residential and equestrian holding on about 4.5 acres

Rathcormac, Co Sligo, F91 EP89



A charming residential and equestrian holding on about 4.5 acres

Rathcormac, Co Sligo, F91 EP89



About this property

Drum East is a compact residential and equestrian holding extending to about 4.5 acres with a private situation. At the core of the property is a fine detached country home set amongst mature gardens and grounds. The property includes a useful range of outbuildings and a ring-fenced block of farmland.

Built in 1996, the design to replicate a traditional old-style cottage with stone-fronted façade which exudes charm and provides comfortable accommodation laid out over two levels. The position of the property away from the road, together with mature hedges and trees bordering the periphery, offers privacy and seclusion to appreciate the surrounding nature and grounds that this home occupies. Accessed off the L3406 Drum East Road, the entrance road leads over a brook to a wrought-iron gated entrance which continues up a tree-lined gravel driveway towards the front of the house.



A charming residential and equestrian holding on about 4.5 acres

Rathcormac, Co Sligo, F91 EP89



A charming residential and equestrian holding on about 4.5 acres

Rathcormac, Co Sligo, F91 EP89



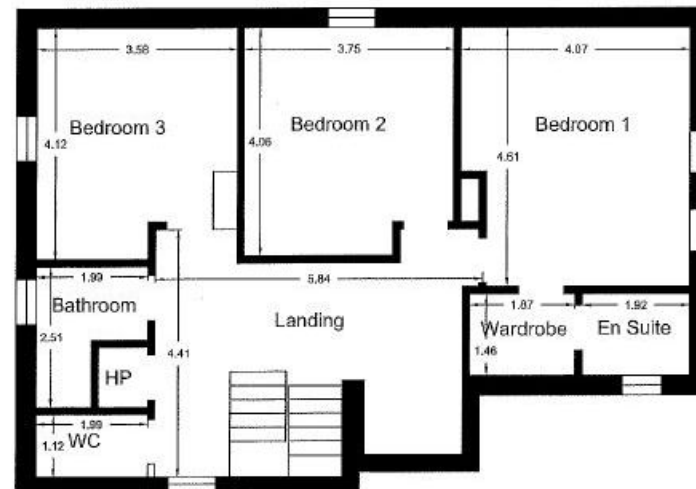
Plans

 1,819 sq ft

 4.5 acres



Ground Floor Area 87.61



A charming residential and equestrian holding on about 4.5 acres

Rathcormac, Co Sligo, F91 EP89



Local Area

Sligo, nestled between Mayo, Leitrim and Donegal on Ireland's Wild Atlantic Way, is the capital of the Northwest region and one of Ireland's largest towns. It offers a wide range of services, amenities, cultural activities and educational opportunities. The surrounding area is renowned for its natural beauty which includes the Wild Atlantic Way, a deeply indented and wild terrain with towering cliffs, spellbinding bays, beaches and mystical islands.



A charming residential and equestrian holding on about 4.5 acres

Rathcormac, Co Sligo, F91 EP89



Property Details

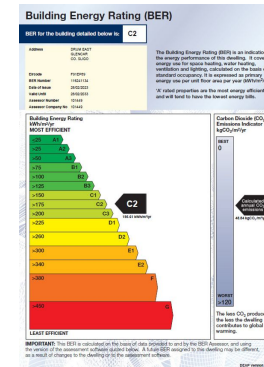
Key Features

- Further land available - detail on request
- Gated, private entrance
- Quality grazing land and equestrian facilities
- Sand arena
- Close to Rosses Point and Sligo Town

Services & Additional Information

BER

BER Rating = C2



Tenure

Freehold

A charming residential and equestrian holding on about 4.5 acres

Rathcormac, Co Sligo, F91 EP89



Enquire



Cianan Duff

Dublin - Country

+353 (0) 86 386 1466

cianan.duff@savills.ie

More Information



[View on website](#)



[View Digital Brochure](#)



[Property Search](#)

Viewing strictly by appointment

Property Ref: DUY230186



Important Notice: Savills, its clients and any joint agents give notice that 1: They are not authorised to make or give any representations or warranties in relation to the property either here or elsewhere, either on their own behalf or on behalf of their client or otherwise. They assume no responsibility for any statement that may be made in these particulars. These particulars do not form part of any offer or contract and must not be relied upon as statements or representations of fact. 2: Any areas, measurements or distances are approximate. The text, photographs and plans are for guidance only and are not necessarily comprehensive. It should not be assumed that the property has all necessary planning, building regulation or other consents and Savills have not tested any services, equipment or facilities. Purchasers must satisfy themselves by inspection or otherwise. *powered by* **FluxPro**