

## NO. 42 SEASCAPE

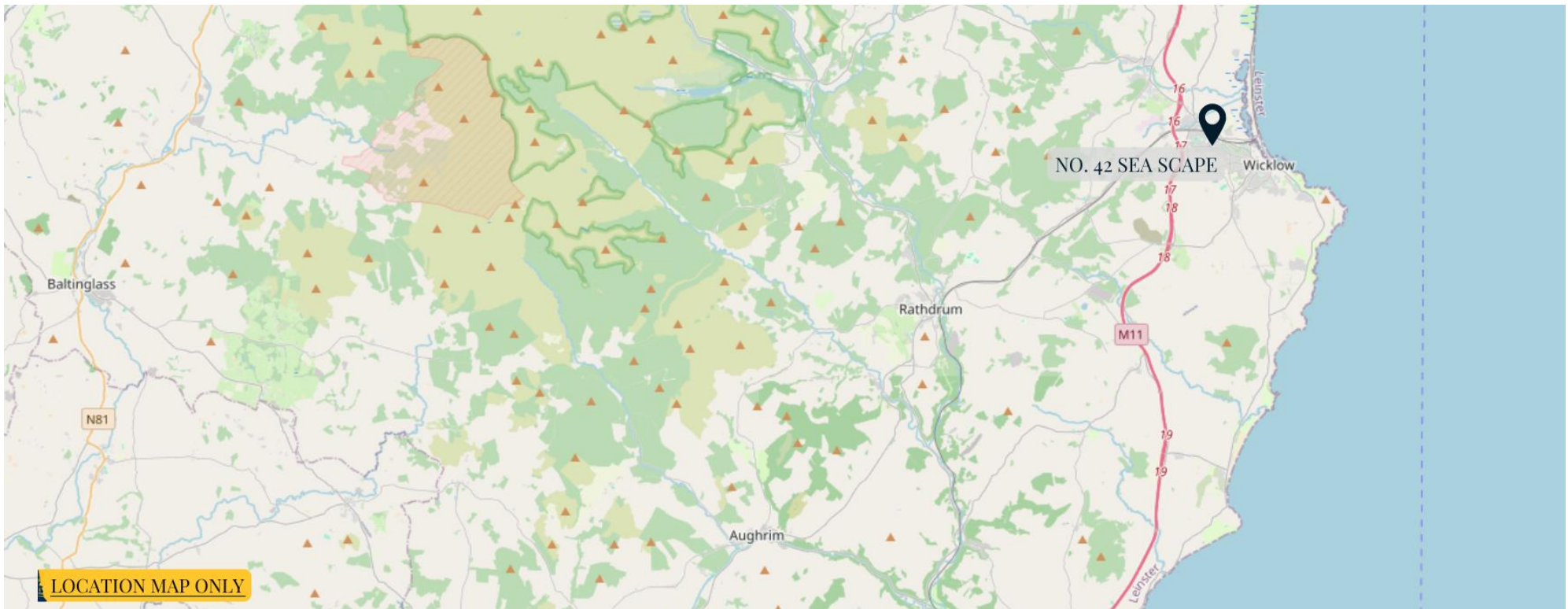
Wicklow Town | Co. Wicklow | A67 P702



# LOCATION

As a location for families, Sea Scape is ideal. Children and adults alike will love the feeling of freedom that comes with living in the countryside, while Keatingstown and its surrounding villages offer a host of excellent facilities for families of all ages. From pre-schools to secondary schools, every child can enjoy an excellent education without travelling far; local choices include Coláiste Chill Mhantain Secondary School, the newly built Wicklow Educate Together National School and St. Coen's National School.

The countryside and coastline offer a wide range of sporting activities & pursuits with Hill Walking, Mountain Climbing, Swimming, Rowing & Sailing, and stunning Cycling Trails, located all around the Wicklow Mountains. For those who prefer team sports, there are a host of clubs and teams in the area, including GAA, Rugby, Athletics, Soccer & Tennis. Equestrian sports are also strong in the area, with facilities available close by. Additionally, some of Ireland's best golf courses are situated only minutes away. Food and Entertainment are also well catered for with a wide range of Cafés, Restaurants & Bars on hand,





# DESCRIPTION

Introducing No. 42 Seascape. A newly built Four Bedroom home within the development of Sea Scape, located in Keatingstown, Co Wicklow.

No. 42 has a BER rating of A2 and boasts a spacious Entrance Hall, Family Room, Kitchen and WC on the ground floor, along with Understairs Storage. The first floor contains three spacious Bedrooms, with one ensuite and a Family Bathroom.

On the second floor there is a Master Bedroom, with Velux Windows and Ensuite and a Plant/ Utility Room.



# ACCOMMODATION

## Entrance Hall

## Living Room

## Kitchen

- Features fully fitted kitchen & Kitchen Island

## Understairs Storage

## W.C

- Features tiled flooring, W.H.B. & W.C

## Bathroom

- Features tiled flooring, W.H.B., W.C & bath

## Bedroom 1

- Features fitted wardobes

## Ensuite

- Features tiled flooring, W.H.B., W.C & shower

## Bedroom 2

## Bedroom 3

- Features fitted wardobes

## Master Bedroom

- Features fitted wardobes

## Ensuite

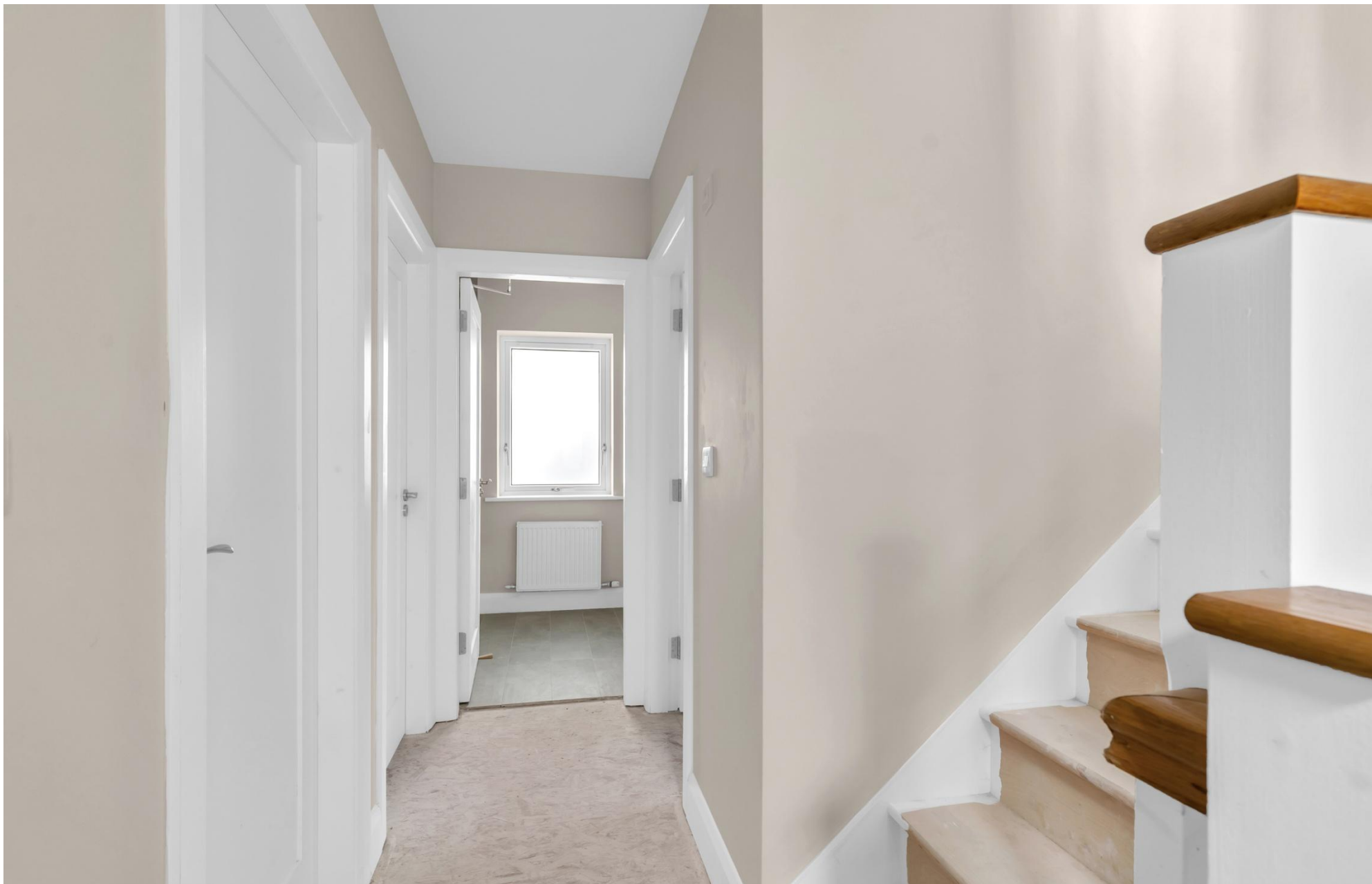
- Features tiled flooring, W.H.B., W.C & shower

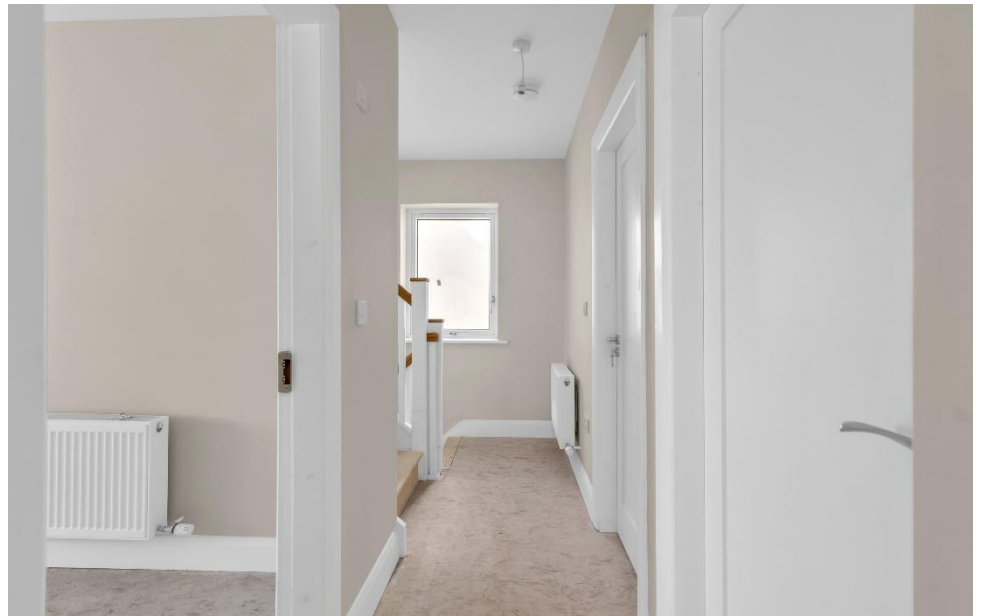
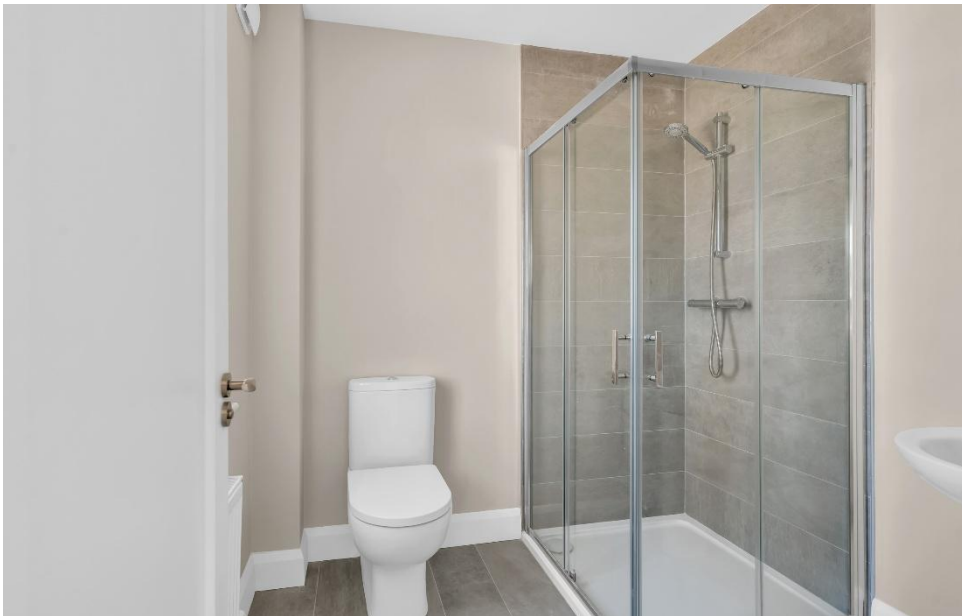
## Utility / Plant Room







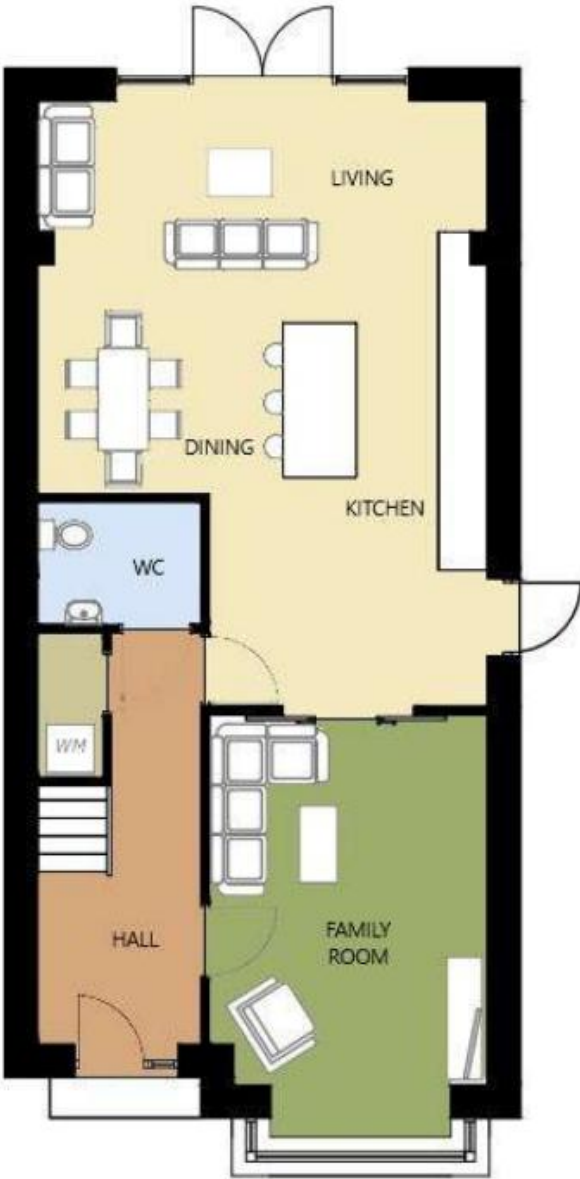












GROUND FLOOR PLAN



FIRST FLOOR PLAN  
[www.jpmaoyie.ie](http://www.jpmaoyie.ie)



SECOND FLOOR PLAN

FOR ILLUSTRATION PURPOSES ONLY  
NOT TO SCALE

**FOR SALE BY PRIVATE TREATY**

**GUIDE PRICE:  
€595,000**

**BER:**



**J. P. & M. Doyle Ltd.**

105 Terenure Road East,  
Dublin 6  
D06 XD29

**CONTACT US**

Telephone: 01 490 3201  
Email: [enquiries@jpmdoyle.ie](mailto:enquiries@jpmdoyle.ie)

PSRA: 002264



J.P. & M. Doyle Ltd., for themselves and for the vendors of this property whose agents they are, give notice that:

- (1) the particulars are set out as a general outline for the guidance of intending purchasers and do not constitute part of an offer or contract.
- (2) all description, dimensions, references to condition and necessary permission of use and occupation, and other details are given in good faith and are believed to be correct, but any intending purchasers or tenants should not rely on them as statements or representations of fact but must satisfy themselves by inspection or otherwise as to the correctness of each of them.
- (3) no person in the employment of J.P. & M. Doyle Ltd. has any authority to make or give any representations or warranty whatever in relation to the property.

